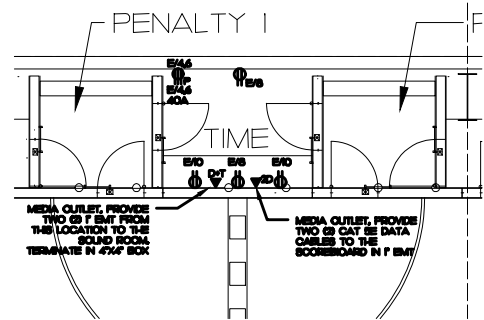
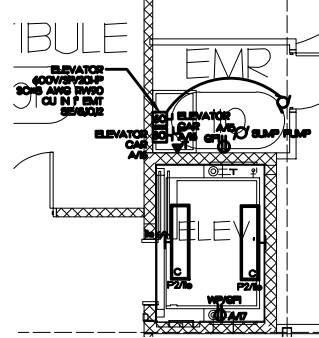


1 ENLARGED PLAN: MECHANICAL ROOM
1/4" = 1'-0"

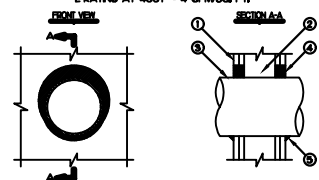


2 ENLARGED PLAN: TIME KEEPERS BOOTH
1/4" = 1'-0"



3 ENLARGED PLAN: ELEVATOR MACHINE ROOM
1/4" = 1'-0"

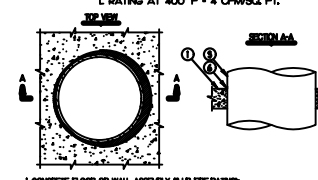
LL/ALL SYSTEM NO. W-1054
METAL PIPE THROUGH INS. OF TYP. SYSTEM WALL ASSEMBLY
F-RATING = 1HR. OR 2HR.
T-RATING = 0-4HR.
L-RATING AT AMBIENT = LESS THAN 1 CFM/SQ. FT.
L-RATING AT 400°F = 4 CFM/SQ. FT.



1. SYSTEM WALL ASSEMBLY SHALL BE CLASSIFIED UNDO OF UNDO SERIES 644, OR 2HR. PRE-RATING THIS SHALL BE MINIMUM 2 1/2" MIN.
2. NOT SHOW HOOD SIZES TO CONSIST OF NORMAL 7" x 4" LUMBER STEEL STUDS TO BE MINIMUM 2 1/2" MIN.
3. PRE-RATING ITEM TO BE ONE OF THE FOLLOWING:
A. MINIMUM 5/8" DIAMETER STEEL PIPE SCHEDULE 40 OR HEAVIER.
B. MINIMUM 5/8" DIAMETER CAST IRON PIPE.
C. MINIMUM 7" NOMINAL DIAMETER COPPER PIPE.
D. MINIMUM 7" NOMINAL DIAMETER STEEL CONDUIT.
E. MINIMUM 4" NOMINAL DIAMETER DUCT.
4. HLT FPO-ONE HIGH PERFORMANCE INFLUENT FIRESTOP SEALANT.
A. MINIMUM 1/4" DEPTH FOR A 2HR. PRE-RATING.
B. MINIMUM 1/4" DEPTH FOR A 1HR. PRE-RATING.
5. MINIMUM 1/4" DEPTH HLT FPO-ONE HIGH PERFORMANCE INFLUENT FIRESTOP SEALANT APPLIED AT POINT OF CONTACT.
NOTES: 1. MINIMUM DIAMETER OF OPENING = 3".
A. 2 1/2" FOR STEEL SILD WALLS.
B. 3 1/2" FOR WOOD SILD WALLS.
2. ANNUAL SPACE = MINIMUM 2".

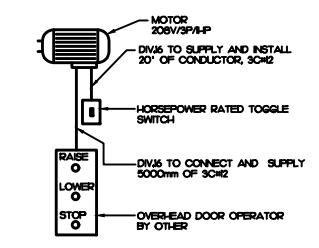
4 FIRE STOPPING DETAIL
N/S

LL/ALL SYSTEM NO. CA.1226
METAL PIPE THROUGH A REIN. IN CONCRETE FLOOR/WALL OR BLOCK WALL
F-RATING = 3HR.
T-RATING = 0-4HR.
L-RATING AT AMBIENT = LESS THAN 1 CFM/SQ. FT.
L-RATING AT 400°F = 4 CFM/SQ. FT.

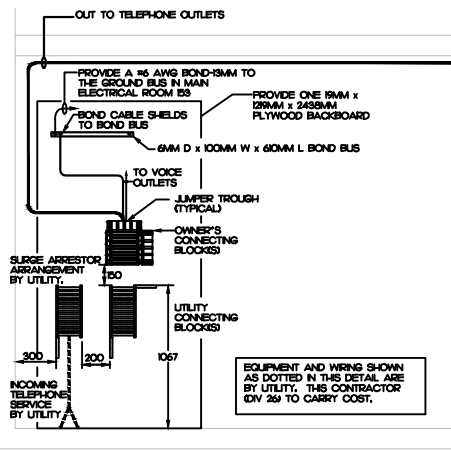


1. CONCRETE FLOOR OR WALL ASSEMBLY 3HR. PRE-RATING.
A. 1/2" MINIMUM THICKNESS CONCRETE FLOOR OR WALL MIN. 4 1/2" THICK.
B. ANY LL/ALL CLASSIFIED CONCRETE BLOCK WALL.
2. OPTION: MINIMUM 2" NOMINAL DIAMETER STEEL PIPE SCHEDULE 40 OR HEAVIER.
3. PRE-RATING ITEM TO BE ONE OF THE FOLLOWING:
A. MINIMUM 5/8" NOMINAL DIAMETER STEEL PIPE SCHEDULE 40 OR HEAVIER.
B. MINIMUM 5/8" NOMINAL DIAMETER CAST IRON PIPE.
C. MINIMUM 7" NOMINAL DIAMETER COPPER PIPE.
D. MINIMUM 7" NOMINAL DIAMETER STEEL CONDUIT.
E. MINIMUM 4" NOMINAL DIAMETER DUCT.
4. MINIMUM 1/4" DEPTH HLT FPO-ONE INFLUENT FIRESTOP SEALANT.
5. MINIMUM 1/4" DEPTH HLT FPO-ONE INFLUENT FIRESTOP SEALANT APPLIED AT POINT OF CONTACT.
NOTES: 1. MINIMUM DIAMETER OF OPENING = 3".
A. 2 1/2" FOR STEEL SILD WALLS.
B. 3 1/2" FOR WOOD SILD WALLS.
2. ANNUAL SPACE = MINIMUM 2".

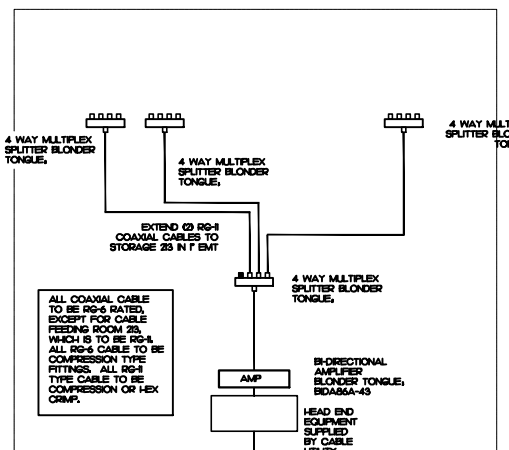
GENERAL ELECTRIC NOTES:
ELECTRICAL CONTRACTOR RESPONSIBLE TO PROVIDE SINGLE POINT CONNECTION TO THE BOILER FRONT AND BOILER DISCONNECT SWITCH AND ALL ASSOCIATED WIRING. ALL OTHER WIRING TO BE COMPLETED BY OTHERS.
COORDINATE LOCATION OF ALL MECHANICAL EQUIPMENT WITH MECHANICAL CONTRACTOR BEFORE INSTALLATION.
ELECTRICAL NOTES:
1. EXTEND 4C950 MCM RWIG, ACM PLUS BOND IN 4" PVC TO DISTRIBUTION MCC PROVIDED BY OTHERS. COORDINATE LOCATION OF MCC WITH GENERAL CONTRACTOR.



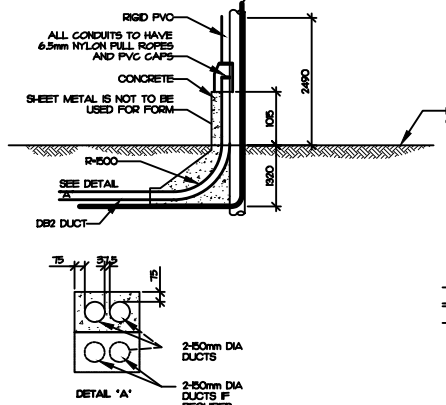
5 OVER-HEAD DOOR OPERATOR
N/S



6 TELEPHONE/DATA RISER
N/S

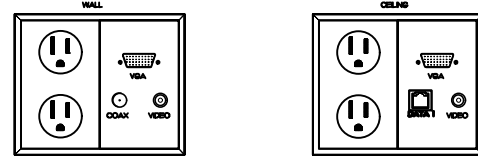


7 CABLE TELEVISION RISER
N/S

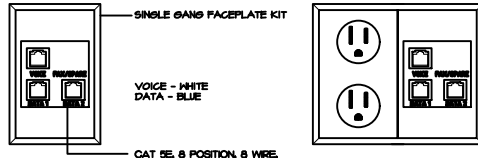


NOTES:
1. CONDUITS TO EXTEND A MINIMUM OF 2400mm ABOVE GRADE ON NON-JOINT USE POLES. ON JOINT USE POLES THE CONDUIT MUST BE RUN 10m ABOVE THE COMMUNICATION PLANT. THE GROUNDING AND NEUTRAL MUST BE THE SAME.
2. ALL MATERIALS TO BE PROVIDED BY THE CONTRACTOR
3. CONTRACTOR TO PROVIDE A MINIMUM OF 24 HOURS WRITTEN NOTICE TO MECL. CONSTRUCTION INSPECTOR PRIOR TO SCHEDULED BACKFILLING OF WORKS. BACKFILLING NOT PERMITTED UNTIL APPROVED BY MECL.

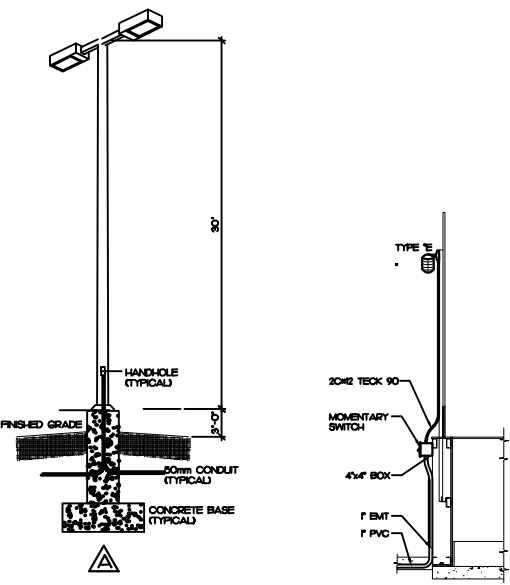
8 RISER POLE DETAIL
N/S



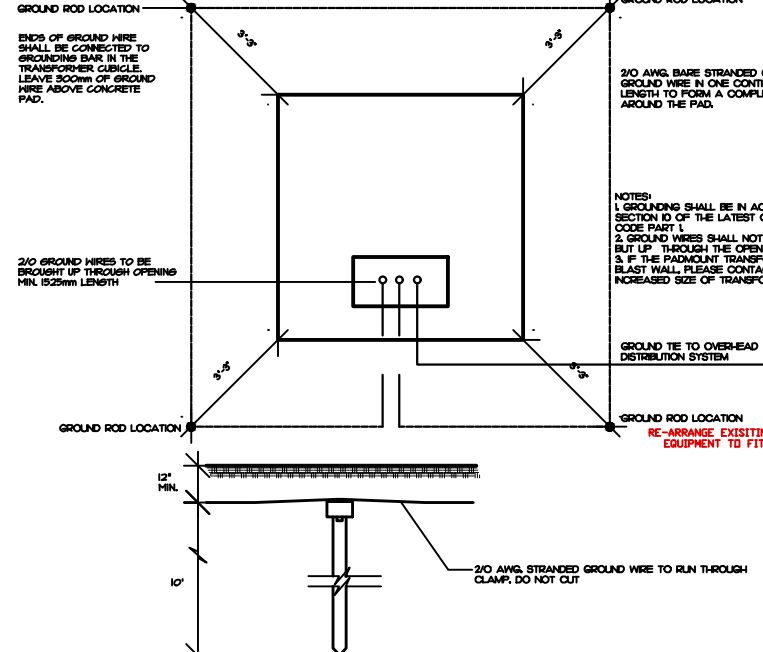
9 DETAIL: PROJECTOR OUTLETS/CEILING OUTLET
N/S



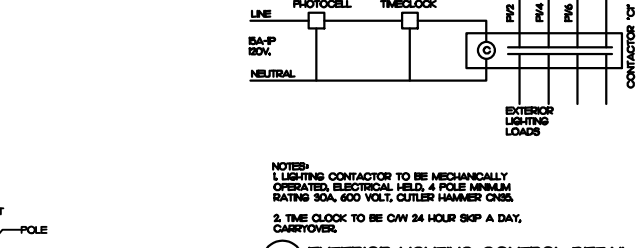
10 DETAIL: VOICE/DATA OUTLET
N/S



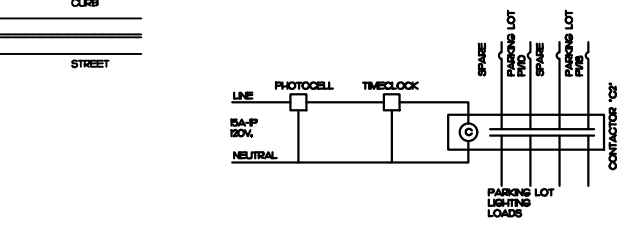
11 LIGHTING STANDARDS (TYP)
N/S



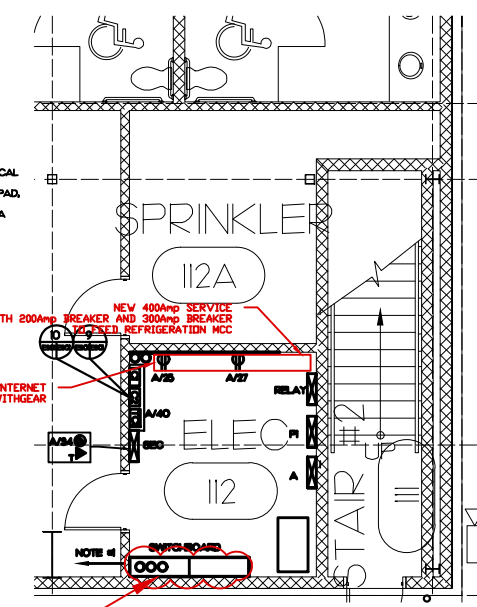
12 PAD MOUNT GROUNDING DETAIL
N/S



9 EXTERIOR LIGHTING CONTROL DETAIL
N/S



10 EXTERIOR LIGHTING CONTROL DETAIL
N/S



13 ENLARGED PLAN: ELECTRICAL ROOM
1/4" = 1'-0"

4	MECHANICAL CONTRACTOR	July 2008
3	MECHANICAL CONTRACTOR	Oct. 14/08
2	ARCHITECTURE	Aug. 7/08
1	ARCHITECTURE	April 4/08
	MECHANICAL CONTRACTOR	March 20/08
	MECHANICAL CONTRACTOR	DATE: 08/08
	MECHANICAL CONTRACTOR	DATE: 08/08

Coles Associates
www.colesassociates.com
Charlottetown, P.E.I., Canada, C1A 7L3
Phone: (849) 386-2588 Fax: (849) 386-3788
www@colesassociates.com

CLIENT:
TOWN OF MONTAGUE
PROJECT TITLE:
MONTAGUE WELLNESS CENTRE
SUBJECT TITLE:
ENLARGED PLANS AND DETAILS
DATE: 08/08
DRAWN BY: C. Montague, PEI
CHECKED BY: C. Montague, PEI
SUBJECT NUMBER: 061181

061181 E301