

# PEI 2 BILLION TREES PROGRAM



## What is this program?

The “PEI 2 Billion Trees Program” (PEI 2BT) supports the creation of new permanent forest cover, prioritizing the planting of marginal and abandoned agricultural land, riparian areas, and wildlife corridors. Planting a mix of climate-adaptive species with a range of habitat requirements will enhance biodiversity and offer additional resiliency to the impacts of climate change. There are three different program streams which will allow planting on many properties with a wide array of requirements; however, priority areas include high sloped fields, sites with sensitive soils, and watershed areas with low forest cover. Other sites may be considered.

## What does it cover?

Cost of the trees and planting. Agriculture fields will also receive a one-time payment for planted area over 1 hectare.

Please visit:

[PrinceEdwardIsland.ca/2BT](https://PrinceEdwardIsland.ca/2BT)



## 3 DIFFERENT STREAMS

PEI’s goal is to plant  
**300,000**  
additional trees a year!

### BENEFITS

- Increased habitat and biodiversity
- Increased carbon storage
- Increased resilience to climate change
- Increased protection from high-water events and erosion



### Watersheds and smaller sites

Apply online for planting less than 2.5 acres, priority to riparian areas and buffer zones

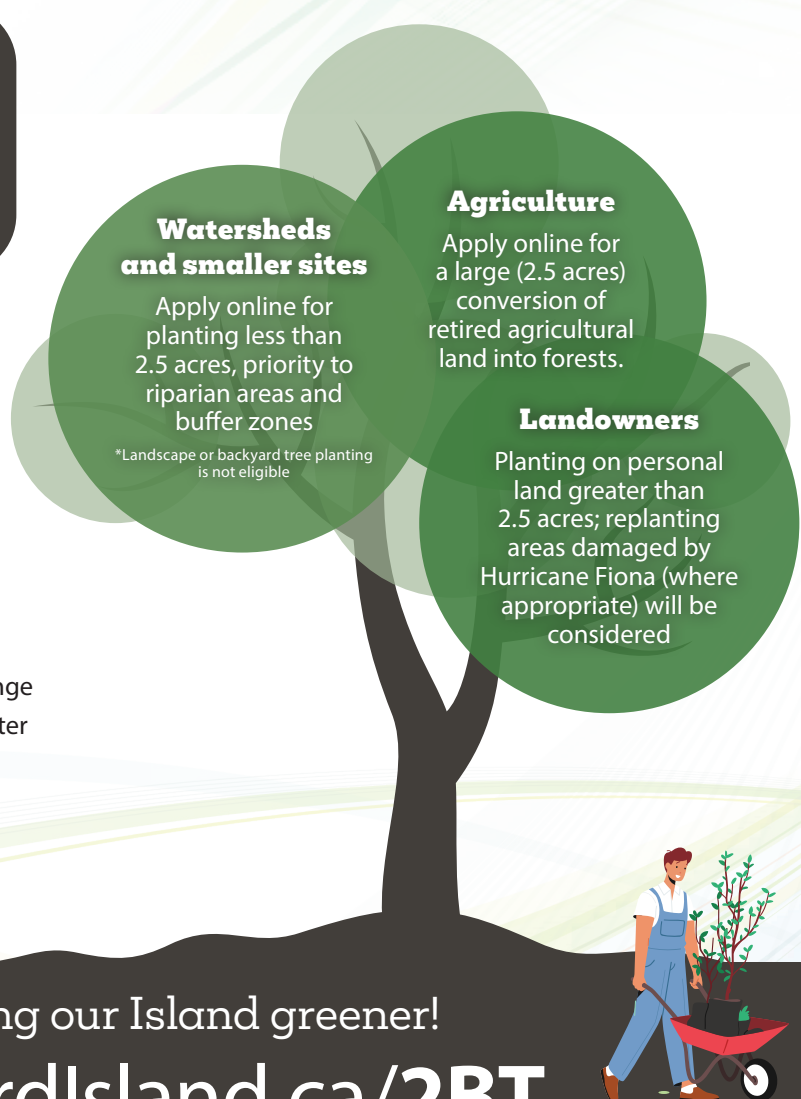
\*Landscape or backyard tree planting is not eligible

### Agriculture

Apply online for a large (2.5 acres) conversion of retired agricultural land into forests.

### Landowners

Planting on personal land greater than 2.5 acres; replanting areas damaged by Hurricane Fiona (where appropriate) will be considered



Join us in making our Island greener!

[PrinceEdwardIsland.ca/2BT](https://PrinceEdwardIsland.ca/2BT)