



PRINCE EDWARD ISLAND  
ÎLE-DU-PRINCE-ÉDOUARD

# **HUNTING AND TRAPPING SEASONS REGULATIONS**

## PLEASE NOTE

This document, prepared by the *Legislative Counsel Office*, is an office consolidation of this Act, current to September 3, 2022. It is intended for information and reference purposes only.

This document is *not* the official version of the Act. The Act and the amendments as printed under the authority of the Queen's Printer for the province should be consulted to determine the authoritative statement of the law.

For more information concerning the history of this Act, please see the *Table of Public Acts* on the Prince Edward Island Government web site ([www.princeedwardisland.ca](http://www.princeedwardisland.ca)).

If you find any errors or omissions in this consolidation, please contact:

*Legislative Counsel Office*  
*Tel: (902) 368-4292*  
*Email: [legislation@gov.pe.ca](mailto:legislation@gov.pe.ca)*



## WILDLIFE CONSERVATION ACT CHAPTER W-4.1

### HUNTING AND TRAPPING SEASONS REGULATIONS

Pursuant to section 28 of the *Wildlife Conservation Act* R.S.P.E.I. 1988, Cap. W-4.1, Council made the following regulations:

#### 1. Open seasons and limits for hunting

- (1) Subject to subsection (2), the open seasons, daily limits and possession limits in respect of hunting specified game animals are set out in Schedule I.

##### Exception, Hungarian (grey) partridge

- (2) The open season set out in Schedule I for hunting Hungarian (grey) partridge does not apply in Lots 1 to 10 and Lots 43 to 47 of Prince Edward Island.

##### Open seasons and limits, hunting harvestable wildlife

- (3) The open seasons, daily limits and possession limits in respect of hunting harvestable wildlife are set out in Schedule II. (*EC592/16; 650/19; 579/20*)

#### 2. Modified foothold trap

- (1) In this section, “modified foot-hold trap” means a foot-hold trap that has jaws that are laminated, off-set or padded or uses some other similarly effective means of improving the humaneness of the trap, as required by clause 6(1)(e) of the Fur Harvesting Regulations (*EC663/04*).

##### Open seasons and limits for trapping

- (2) Subject to subsections (3) and (4) and the Fur Harvesting Regulations, the open seasons, daily limits and possession limits in respect of trapping specified fur-bearing animals are set out in Schedule III.

##### Restrictions, fox

- (3) During the open season set out in Schedule III for trapping fox, trapping is limited to the use of
- (a) modified foot-hold traps, from November 1 to November 14; and
  - (b) snares and modified foot-hold traps, from November 15 to January 31.

##### Restrictions, coyote

- (4) During the open season set out in Schedule III for trapping coyote, trapping is limited to the use of
- (a) modified foot-hold traps, from October 15 to November 14 and from February 1 to February 28; and

- (b) snares and modified foot-hold traps, from November 15 to January 31. (EC592/16; 650/19)

### 3. Revocation

The Hunting and Trapping Seasons Regulations (EC330/99) are revoked. (EC592/16)

#### SCHEDULE I HUNTING SEASONS AND LIMITS

Game Animal	Open Season	Daily	Possession
Pheasant	No open season	-	-
Ruffed Grouse	September 26 - December 31	3	6
Hungarian (Grey) Partridge	October 15 - November 15	3	6
Snowshoe Hare (Rabbit)	October 1 - March 31	5	-
Fox	November 1 - January 31	-	-
Raccoon	October 1 - March 31	-	-
Coyote	October 1 - March 31	-	-
Red Squirrel	No closed season	-	-

(EC592/16; 523/17; 571/18; 650/19; 579/20; 763/21; 654/22)

#### SCHEDULE II HUNTING SEASONS AND LIMITS

Harvestable Wildlife	Open Season	Daily	Possession
American crow	No closed season	-	-

(EC650/19)

#### SCHEDULE III TRAPPING SEASONS

Fur-bearing Animals	Open Season
Beaver*	8:00 AM November 1 - March 31
Mink	8:00 AM November 1 - March 31
Muskrat	8:00 AM November 1 - March 31
Weasel	8:00 AM November 1 - March 31
Raccoon	October 15 - March 31
Fox	November 1 - January 31
Coyote	October 15 - February 28
Red Squirrel	No closed season
Skunk	No closed season

\* Setting traps for beaver is restricted in the zone specified in Schedule IV.

(EC592/16; 523/17; 571/18; 650/19; 654/22)



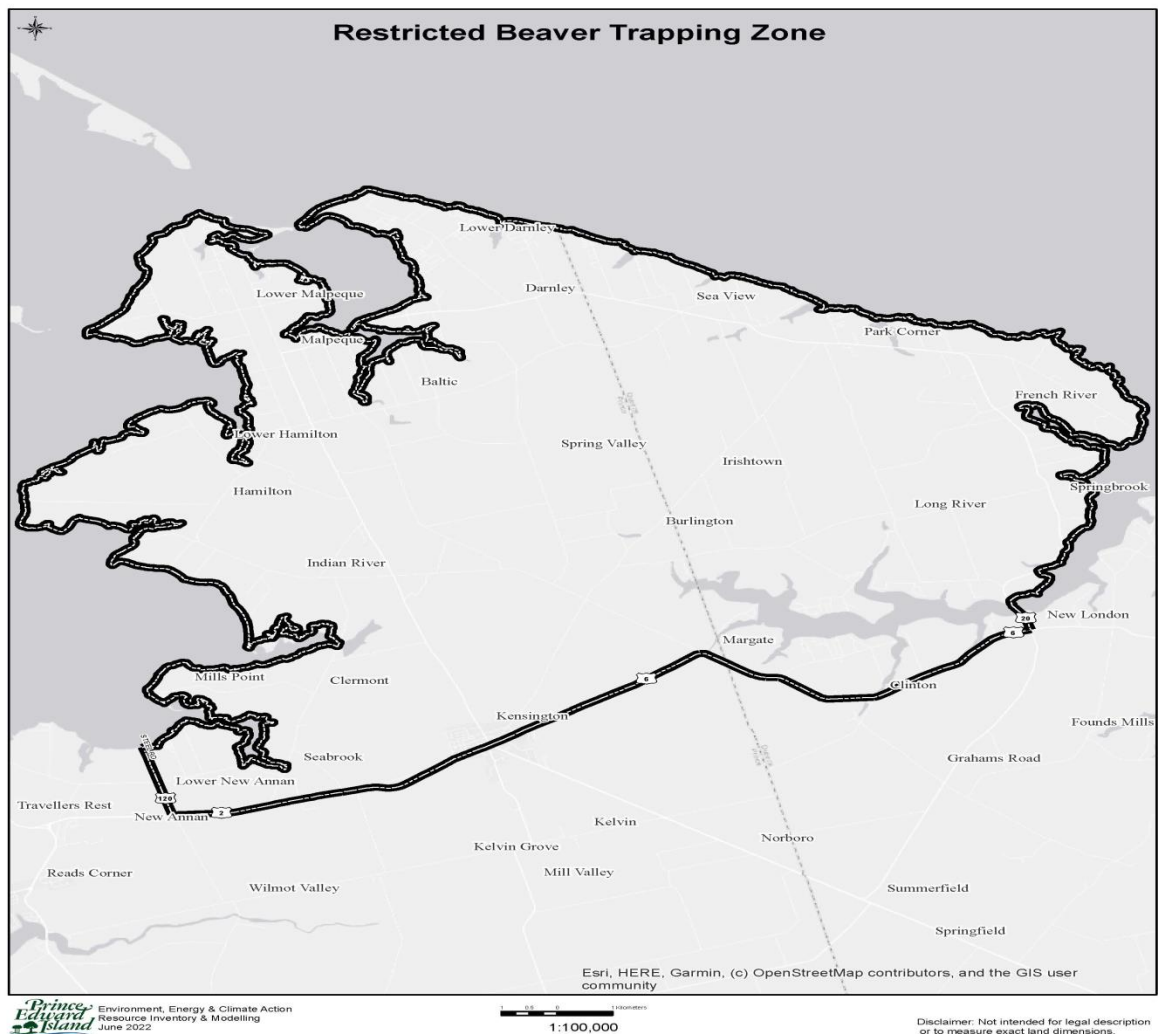
**SCHEDULE IV  
RESTRICTED ZONE - BEAVER**

Unless specifically authorized to do so by the Minister, no person shall set traps for beaver in the zone described as follows:

All lands bordered by the southern coastline of the Gulf of St. Lawrence, the eastern coastline of Malpeque Bay and the west bank of the Southwest River within the following boundaries:

Commencing at the southern end of the Southwest River bridge on Route 20; continuing southward along Route 20 to its termination in the community of New London; than continuing westward along Route 6 to its termination in the Town of Kensington; then continuing westward along Route 2 to its termination at the eastern shoreline of Malpeque Bay.

The restricted zone is illustrated in the map below.



(EC654/22)