



**PROVINCE OF PRINCE EDWARD ISLAND**

**Sixteenth Annual  
STATISTICAL REVIEW**

**1989**

**MARCH 1990**

**1991 CANADA GAMES  
PRINCE EDWARD ISLAND  
FEBRUARY 17 - MARCH 12**



**JEUX DU CANADA 1991  
ÎLE-DU-PRINCE-ÉDOUARD  
du 17 FÉVRIER au 2 MARS**



**PROVINCE OF PRINCE EDWARD ISLAND**

**Sixteenth Annual  
STATISTICAL REVIEW**

**1989**

Prepared by:  
Economics, Statistics and Fiscal Analysis Division  
Department of Finance  
March, 1990

## FOREWORD

The Prince Edward Island Annual Statistical Review presents a comprehensive review of socio-economic information for Prince Edward Island. The statistical tables provide historical and current data at the provincial level and in some cases at sub-provincial levels. The Annual Statistical Review satisfies an ever increasing need for a quick and reliable source of statistics on Prince Edward Island. The review serves as an indispensable source of information to assist in the analysis of the Prince Edward Island economy and its people. The publication contains a brief narrative analysis of the economic performance of the Province over the past year and a short description of the Province entitled 'Facts about Prince Edward Island'.

The statistics presented in this review are compiled by the Economics, Statistics and Fiscal Analysis Division and are obtained from a variety of sources including Statistics Canada, provincial government departments and the Conference Board of Canada. If you have any suggestions, comments or statistical inquiries, the Division's staff are always ready to assist you.



**GILBERT R. CLEMENTS,  
Minister of Finance**

# FACTS ABOUT PRINCE EDWARD ISLAND

Population - (June 3, 1986) .....	126,646
Urban Population .....	48,289
Rural Population .....	78,357
Farm Population .....	10,275
Non-Farm Population .....	68,085
Land Area - (Square Kilometers) .....	5,660.38
Population density- (per sq. kilometer).....	22.4
Total Area of Farms - 673,196 acres (272,432 hectares) (48.1% of total land area).	

<b>MOTTO</b> .....	Parva sub ingenti (the small under the protection of the great)
<b>FLOWER</b> .....	Lady's Slipper (designated in 1947)
<b>PROVINCIAL BIRD</b> .....	Blue Jay
<b>DESIGNATED TREE</b> .....	Red Oak
<b>CAPITAL</b> .....	City of Charlottetown (Population 15,776, June 3, 1986)

## COUNTIES AND THEIR POPULATION (June 3, 1986)

KINGS .....	19,509
QUEENS .....	63,460
PRINCE .....	43,677

## MEMBERS OF THE

<b>LEGISLATIVE ASSEMBLY</b> .....	32 (30 Liberals, 2 Progressive Conservatives)
<b>MEMBERS OF PARLIAMENT</b> .....	4
<b>SENATORS</b> .....	4

## Prince Edward Island entered Confederation in 1873

## TRANSPORTATION

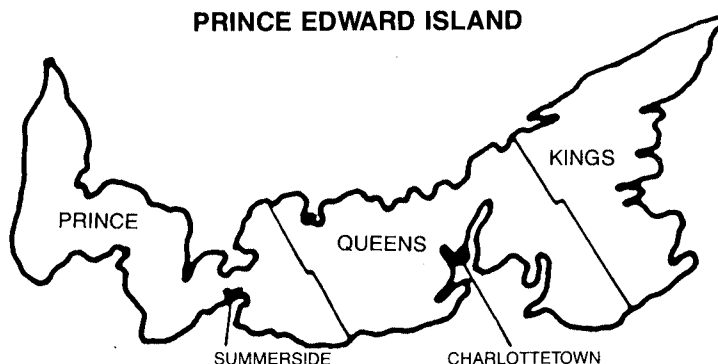
- Airlines .....	Air Canada, Canadian International Airlines, Air Atlantic and Air Nova
- Ferries .....	Borden, P.E.I. to Cape Tormentine, N.B.; Wood Islands, P.E.I. to Caribou, N.S.; Souris, P.E.I. to Grindstone, Magdalen Islands.
- Rail .....	Canadian National Railways

**NEWS MEDIA**

- Television Systems . . . . . Canadian Broadcasting Corporation CBC and Atlantic Television (ATV)
- Three A.M. Radio Stations . . . . . CFCY, Charlottetown; CHTN, Charlottetown; and CJRW, Summerside
- Three F.M. Radio Stations. . . . . CBCT F.M. (96), Q93 F.M., and CBAF F.M.
- Three Daily Newspapers . . . . . The Guardian, The Evening Patriot, and the Journal Pioneer
- Three Weekly Newspapers . . . . . The Eastern Graphic, The West Prince Graphic and LaVoix Acadienne
- One Bi-Weekly Newspaper . . . . . The Island Farmer

**TEMPERATURE** (Degrees Celsius, taken from measurements recorded during 1951-1980)

Summer (July and August). . . . .	Average Temperature	18.3
	Absolute Maximum	34.6
	Absolute Minimum	3.9
Winter (January and February). . . . .	Average Temperature	-7.1
	Absolute Maximum	12.2
	Absolute Minimum	-28.9
Average Yearly Snowfall . . . . .	304 cm (taken from measurements recorded during 1951-1980)	



## **PREFACE AND ACKNOWLEDGEMENTS**

The statistics included in this publication have been obtained from several sources, including Statistics Canada, Provincial Government Departments, and other institutions and agencies.

Thanks to Statistics Canada, to all provincial departments and others who supplied data, to Janice MacDonald for putting the report together, Roy Spence for preparing the Economic Review and Ada Lowther for help in preparation of the Review.

Appreciation is also extended to Anne MacMicken and Doreen Pound from the Office of the Queen's Printer for their valuable assistance in the production of this publication.

John Palmer,  
Director

# TABLE OF CONTENTS

<b>I. Facts About Prince Edward Island</b> .....	iv
<b>II. P.E.I. Economic Review 1989</b> .....	1

## TABLES

### III. Population Vital Statistics and Labour Force

1. Population and Vital Statistics, Prince Edward Island .....	14
2. In-Migration to Prince Edward Island by Province of Origin .....	15
3. Out-Migration from Prince Edward Island by Province of Destination ....	16
4. Components of International and Interprovincial Migration, Prince Edward Island .....	17
5. Population by Sex and Age Group, P.E.I. ....	18
6. Population of Cities, Towns, Villages and Indian Reserves in P.E.I. 1981 & 1986. ....	19
7. 1986 Census Data on Population, Dwellings, Households and Families ..	20
8. P.E.I. Working Age Population, Labour Force, Employment and Unemployment, Annual Averages 1979-1989, Employment and Unemployment, by Sex, Annual Averages 1985-1989. ....	21
9. Estimates of Employees by Industry, P.E.I., 1983-1989. ....	22
10. Average Weekly Wages and Salaries, Total Wages and Salaries, P.E.I. ....	23
11. Unemployment Insurance Statistics Prince Edward Island, 1977-1989 ...	24

### IV. General Economic Indicators

12. Personal Income P.E.I. 1984-1988 .....	25
13. Government Transfer Payments to Persons, P.E.I. 1984-1988 .....	26
14. P.E.I. Gross Provincial Expenditure 1984-1988 .....	27
15. Provincial Gross Domestic Product P.E.I. by Component 1984-1988 .....	28
16. Performance of Gross Domestic Product P.E.I. Relative to Canada. ....	29
17. Provincial Gross Domestic Product at Factor Cost for Selected Industries, Prince Edward Island 1980-1984 .....	30

18.	Gross Domestic Product by Industry, P.E.I. (Constant \$, 1981) 1984-1989	31
19.	Public and Private Investment by Type and by Industry, P.E.I. ....	32
20.	All Items Consumer Price Index, Charlottetown - Summerside 1981 = 100 .....	33
21.	All Items Consumer Price Index, Canada 1981 = 100 .....	34
22.	Consumer Price Index Charlottetown - Summerside, Annual Averages of Major Components, 1981 = 100 .....	35
23.	Consumer Price Index Canada, Annual Averages of Major Components, 1981 = 100 .....	36
24.	Canadian Industrial Product Price Index for Selected Commodities 1986-1989 and by Month 1989 .....	37
25.	Value of Retail Trade by Kind of Business, Prince Edward Island .....	38
26.	New Motor Vehicle Sales, Prince Edward Island 1982-1989 .....	39
27.	International Exports from Prince Edward Island by Principal Trading Areas and by Major Commodities .....	40
28.	Personal Income Tax Returns, Prince Edward Island, Income & Taxes Paid, 1983-1987, All returns by Counties and Selected Localities, 1987 .....	41
29.	Personal Income Tax Returns, 1987 Taxation Year, All Returns by Income, Prince Edward Island .....	42
30.	Personal Income Tax Returns, 1987, All Returns by Occupation for Prince Edward Island .....	43

## V. Sectoral Development

### A. Economic Statistics

31.	Value of Building Permits by Type, P.E.I. ....	44
32.	Number of Building Permits by Type of Dwelling, P.E.I. ....	44
33.	Number of Building Permits by County, P.E.I. ....	45
34.	Housing Starts, Completions and Under Construction for P.E.I. by Year and Quarter 1985-1989 .....	46
35.	Housing Starts by Type of Unit, P.E.I., 1975-1989 .....	47
36.	Farm Cash Receipts, Prince Edward Island, 1984-1989 .....	48
37.	Income of Farm Operators from Farming Operations, P.E.I. ....	49
38.	Capital Value of All Farms in P.E.I. 1982-1988 .....	50
39.	Index of Farm Production, P.E.I. ....	50
40.	Farm Product Price Index P.E.I. 1981 = 100 .....	51



64.	Interprovincial Bus Service - Island Transit Co-operative Ltd., P.E.I. 1987-1989 .....	69
65.	Air Passengers to and from Prince Edward Island 1985-1989 .....	70
66.	Prince Edward Island Motor Vehicle Registration 1981-1988 .....	70

## **B. Social Statistics**

67.	Prince Edward Island School Enrolment .....	71
68.	Post-Secondary Enrolments, Prince Edward Island .....	72
69.	Holland College Enrolments 1984/85-1988/89 .....	73
70.	Prince Edward Island Educational Expenditures .....	74
71.	Prince Edward Island Health and Hospital Care Statistics .....	74
72.	Active Treatment Hospitals, Prince Edward Island .....	75
73.	Physicians Services, Prince Edward Island .....	75
74.	Crime Statistics, Prince Edward Island .....	76
75.	Persons Held in Prince Edward Island Jails .....	77
76.	Persons Held in Youth Facilities, Total Days by Custody and Youth Facility .....	78
77.	Entries Under the Supreme Court of P.E.I. Fiscal Year Ended March 31 .....	79

## **C. Government**

78.	Province of Prince Edward Island Revenue \$, Fiscal Years Ended March 31, 1987, 1988 and 1989 .....	80
79.	Province of Prince Edward Island Ordinary Expenditure \$, Fiscal Years Ended March 31, 1988 and 1989 .....	81
80.	Revenues and Expenditures by All Levels of Government, National Accounts Basis 1984-1988, P.E.I. ....	82
81.	Prince Edward Island Provincial Government Employment .....	83
82.	Provincial Government Employment and Payroll in P.E.I. ....	84
83.	Federal Government Employment and Payroll in P.E.I. ....	85

**NOTE:** *The Table of Contents listed on pages ix and x are in reverse order.  
The text appearing on page x should appear before the text on this page.*

41.	Comparison of Selected Census Farm Data, P.E.I. 1976, 1981 & 1986 .....	52
42.	Census Farm Data, Classified by Sales Class, P.E.I. 1976, 1981 & 1986 .....	53
43.	Farms with Sales of \$2,500 or More, Classified by Type of Product, P.E.I. 1976, 1981 & 1986 .....	54
44.	Selected 1986 Census of Agriculture Statistics by County in P.E.I. ....	55
45.	Estimates of Primary Forest Production, Prince Edward Island .....	56
46.	Fish Landings and Value, Prince Edward Island .....	56
47.	P.E.I. Lobster Landings Statistics Comparisons, Total Pounds .....	57
48.	Average Price Received by P.E.I. Fishermen, Selected Years and Species .....	58
49.	Total Number of Tourists via Auto Vehicles, P.E.I. (May 15 - October 31), 1983-1989 .....	59
50.	Amount Expended by Non-Resident Tourists by Category All Modes (May 15-October 31) 1983-1989 .....	59
51.	P.E.I. Tourist Parties by Mode of Travel, 1989 Season (May 15-October 31) .....	60
52.	P.E.I. Tourist Auto Parties by Origin (May 15 - October 31), 1989 .....	60
53.	P.E.I. Restaurant, Caterer and Tavern Receipts by Kind of Business for 1985-1989 and by Month 1989 .....	61
54.	Number of Locations and Total Receipts from Major Accommodation Groups, P.E.I. ....	62
55.	Sources of Receipts for All Types of Accommodation Groups, P.E.I. ....	62
56.	Principal Statistics of P.E.I. Manufacturing Industries .....	63
57.	Valued Added in Manufacturing Activity by Major Groups and Industry P.E.I. 1982-1986 .....	64
58.	Estimated Value of Shipments in All Manufacturing Industries Province of Origin-P.E.I. ....	65
59.	Prince Edward Island Electricity Statistics .....	66
60.	Sales of Refined Petroleum Products, P.E.I. 1983-1989 .....	67
61.	Schedule of Gasoline Sales in P.E.I. for the Fiscal Year Ended March 31 (Taxed and Tax Exempt Gasoline) .....	67
62.	Transportation Statistics, P.E.I. - Ferry Service .....	68
63.	Rail Freight-Carloads, P.E.I. 1982-1988 .....	69

**PRINCE EDWARD ISLAND**  
**ECONOMIC REVIEW 1989**

**1. INTRODUCTION**

The annual Statistical Review presents a commentary on the provincial economic situation during the past year. It is based on statistical information available at the time of publication and in some cases the data are preliminary and therefore subject to revision.

**2. ECONOMIC SUMMARY**

The pace of growth of the Canadian economy slowed in 1989 following exceptionally strong gains in 1988. The rate of growth in Gross Domestic Product in constant dollars for 1989 is estimated at 2.9 per cent compared to 5.0 per cent in 1988. The 2.9 per cent gain was the slowest rate of economic growth in Canada since the 1982 recession. The expansion of the Canadian economy in the past few years has been supported by major growth of business fixed investment and personal expenditures on goods and services. Business fixed investment led expenditure growth in 1989 with a constant dollar growth rate of 6.9 per cent. Personal expenditures on goods and services in constant dollars have expanded by over four per cent per year since 1984, and in 1989 increased by a further 4.0 per cent.

The slower growth of the national economy in 1989 is partially attributable to the weak international trade situation. The volume of exports from Canada in 1989 declined by 0.9 per cent largely as a result of the high value of the Canadian dollar on world currency markets and the slowdown in the United States economy. The unemployment rate in Canada has been declining since 1983, and fell to 7.5 per cent in 1989 from 7.8 per cent in 1988. Inflation, as measured by the percentage increase in the Consumer Price Index, rose from 4.1 per cent in 1988 to reach 5.0 per cent in 1989. The Bank of Canada has attempted to contain inflationary pressures by raising Canadian short-term interest rates (the Bank Rate) from 11.5 per cent in January 1989 to 12.5 per cent by December.

Similar to the national picture, the economy of Prince Edward Island increased at a slower pace in 1989. Moderate economic gains of the Province were somewhat below the national rate but this followed a year of exceptional growth in 1988. The star performers in 1989 were agriculture, benefitting from a significant increase in farm cash receipts, and tourism, which was at a record level. Total farm cash receipts for 1989 reached an all time high of \$253.8 million. Tourist visitation, as measured by auto and air tourist parties, increased in 1989 by 5.3 per cent over 1988.

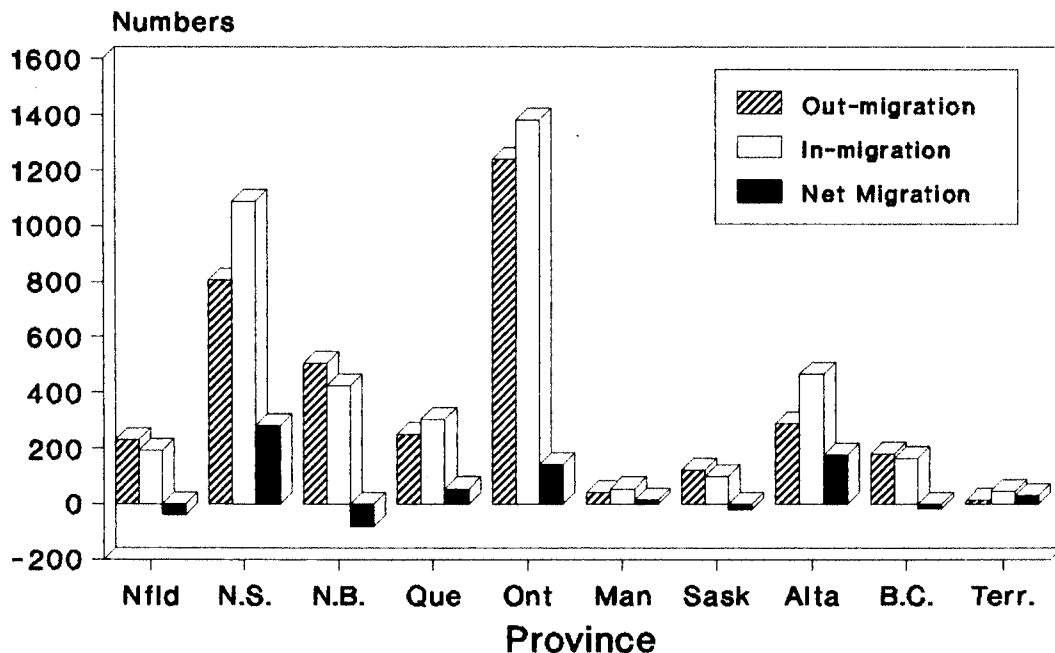
Declining house construction in 1989 negatively impacted on employment levels. Employment growth on Prince Edward Island had been strong from 1983 but in 1989 it remained unchanged from the 1988 level of 54,000. The Island's labour force continued to expand in 1989 and consequently the unemployment rate increased significantly during the year to average 14.1 per cent per month compared to 13.0 per cent in 1988.

### 3. POPULATION

Statistics Canada's estimate of the population of Prince Edward Island at June 1st 1989 was 130,000, compared to 128,500 a year earlier. This gain results from 1,999 births, 1,120 deaths, and total net in-migration of approximately 610. Significant gross migration flows occur each year between Prince Edward Island and other provinces. Between June 1988 and May 1989 an estimated 4,216 persons came to Prince Edward Island from other provinces and 3,676 moved off the Island. The largest absolute numbers of movers were between Prince Edward Island and Ontario, followed by population movement between Prince Edward Island and Nova Scotia, New Brunswick and then Alberta. Both the gross flows and net results are shown in Diagram 1 for the period June 1st 1988 to May 31st 1989. In that period the most significant net loss of population was between Prince Edward Island and New Brunswick. This was offset by net in-migration to Prince Edward Island from Ontario, Nova Scotia, and Alberta.

**Diagram 1**

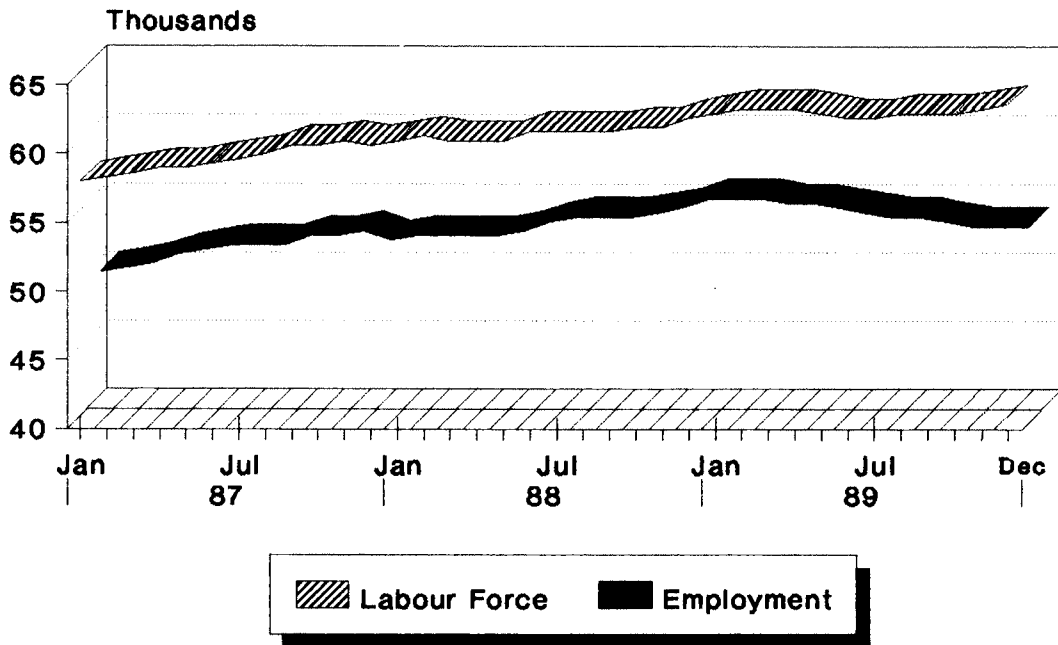
**INTERPROVINCIAL MIGRATION  
P.E.I., 1988-89**



### 4. LABOUR FORCE

Statistics Canada's Labour Force Survey identified the size of the Island's average monthly labour force in 1989 as 63,000, compared to 62,000 in 1988. The population 15 years and over in 1989 numbered 97,000 increasing from 96,000 in 1988. The labour force participation rate rose from 64.1 per cent in 1988 to 65.0 per cent in 1989. The female labour force participation rate climbed from 55.5 per cent in 1988 to 57.3 per cent in 1989, while the male labour force participation rate rose only marginally from 73.0 per cent to 73.1 per cent. The upward movement in female labour force participation rates is a continuing trend for both Prince Edward Island and Canada.

**Diagram 2**  
**LABOUR FORCE & EMPLOYMENT**  
**P.E.I., 1987-89**

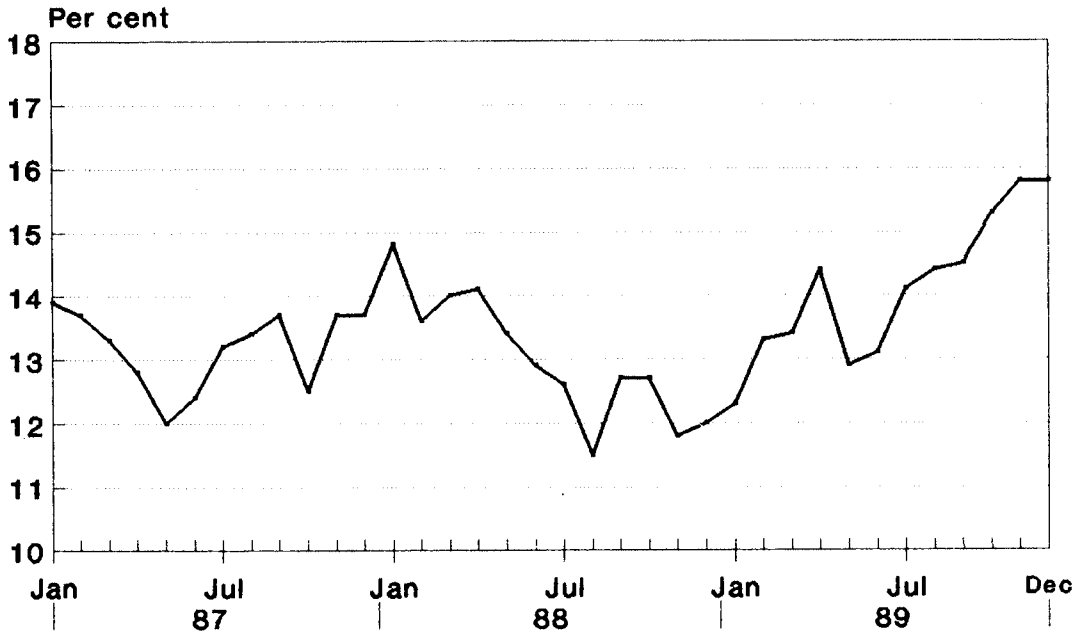


**Seasonally Adjusted**

Diagram 2 displays the trend in seasonally adjusted monthly labour force and employment levels on Prince Edward Island in the last three years. One can see that in the latter half of 1989 the labour force continued to increase while the level of employment declined. The gap between the lines is the number unemployed. The unemployment situation in the Province clearly worsened throughout the year. Diagram 3 shows the monthly seasonally adjusted unemployment rate for Prince Edward Island over the period 1987-89. The seasonally adjusted rate of unemployment rose from 12.3 per cent in January 1989 to 15.8 per cent by the end of the year. On an annual basis, the average monthly rate of unemployment in 1989 increased from 13.0 per cent in 1988 to average 14.1 per cent in 1989. The Labour Force Survey indicates that in 1989 the unemployment rate for females was 14.6 per cent, and for males was 13.7 per cent. The average monthly employment on Prince Edward Island in 1989 was 54,000, which was the same as in 1988.

**Diagram 3**

**UNEMPLOYMENT RATE  
P.E.I., 1987-89**



**Seasonally Adjusted**

Dependence upon the Unemployment Insurance program has expanded considerably over the past two decades. Total weeks of Unemployment Insurance benefits paid rose from 152,000 in 1971, to 694,800 in 1988, and reached 700,860 in 1989. Total benefits paid valued \$151.2 million in 1989 compared to \$138.5 million in 1988, an increase of 9.1 per cent. This sharp increase in Unemployment Insurance benefits arose primarily from an increase of 8.6 per cent in the average weekly payment which valued \$215.67 per beneficiary in 1989.

**5. INFLATION**

The Charlottetown-Summerside Consumer Price Index increased by 3.8 per cent in 1989 compared to a 5.0 per cent increase in the Canadian Consumer Price Index. This compares to an increase in the Charlottetown-Summerside Consumer Price Index in 1988 of 3.7 per cent, and 4.1 per cent nationally. This was the eighth consecutive year in which the percentage increase for the Charlottetown-Summerside's Consumer Price Index was lower than the percentage increase in the national Consumer Price Index.

**Comparison of Annual Percentage  
Increases in Consumer Price Index, 1989**

	Charlottetown- Summerside	Canada
Food .....	3.8	3.7
Housing .....	2.5	5.3
Clothing .....	3.4	4.0
Transportation .....	3.1	5.1
Health & Personal Care .....	4.2	4.4
Recreation & Education .....	4.5	4.5
Tobacco & Alcohol .....	11.4	9.3
Energy .....	<u>-2.5</u>	<u>3.4</u>
All Items .....	3.8	5.0

The above table indicates that the price of tobacco and alcohol increased sharply on Prince Edward Island in 1989. Energy prices, which are a component of the housing and transportation aspects of the Consumer Price Index, declined by 2.5 per cent in 1989 on Prince Edward Island. This accounts for the major part of the slower increases in Charlottetown-Summerside Consumer Price Index relative to Canada.

## 6. PERSONAL INCOME

Statistics Canada estimates the value of personal income on Prince Edward Island to have been \$1,859 million in 1988, the most recent year for which data is available. This represents an increase of 11.5 per cent in 1988, following an increase of 5.2 per cent in 1987. The faster growth rate of personal income in 1988 was mainly due to large increases in the net income of farmers and in income from interest, dividends, and miscellaneous investment income. Farm income rose from \$14 million in 1987 to \$72 million in 1988 according to Statistics Canada's Provincial Economic Accounts and investment income rose from \$117 million to \$138 million. Farm income in 1988 was significantly influenced by the high prices for the 1988 potato crop marketed in the fall of 1988, and a large value of inventory change.

The total value of wages and salaries, the largest component of personal income, increased in 1988 by 8.2 per cent compared to 1987. Indications for 1989 are for a slower rate of labour income growth as the value of wage and salaries rose to \$901.3 million in 1989, an increase of 6.5 per cent over 1988.

Per capita personal income on Prince Edward Island in 1988 was \$14,411, which was 73.8 per cent of Canada's per capita personal income. Prince Edward Island's position can be compared to Newfoundland with the lowest per capita personal income at 71.0 per cent of the national average, Nova Scotia at 82.4 per cent, and 77.2 per cent for New Brunswick.

## 7. GROSS DOMESTIC PRODUCT

### (a) Gross Domestic Product at Market Prices.

The estimated value of Gross Domestic Product in current dollars for Prince Edward Island in 1988 was \$1,762 million. This represents 0.3 per cent of the Canadian Gross Domestic Product. This is substantially less than Prince Edward Island's share of the

The value of receipts was \$253.8 million in 1989, an all time record. The sale of potatoes formed 46.9 per cent of the total value of farm cash receipts on Prince Edward Island in 1989 and was the major cause of the upsurge in farm cash receipts that year. The value of potatoes sold in 1989 was 88.5 per cent higher than in 1988, to reach \$119 million. This increase was entirely attributable to improved prices. Potato prices for the Island's crop increased from \$5.03 per cwt for the 1987 potato crop to \$8.66 per cwt for the 1988 crop. The seeded acreage in 1989 was 68,000 acres, which was the same as it had been in 1988. Statistics Canada's estimate of the volume of the Island's 1989 potato crop is 18.0 million cwt, a marginal decline from the 1988 production figure.

Total farm cash receipts from the sale of livestock and dairy products in 1989 were \$94.2 million, a decrease of 1.4 per cent from 1988. This was due to declines in the volume of hog and beef slaughtering and lower production of dairy products in the Province. The value of the sale of dairy products was \$36.8 million in 1989, a decrease of 0.8 per cent over that of 1988. The value of farm sales of milk and cream in Prince Edward Island in the first 11 months of 1989 declined by 2.2 per cent over the same period in 1988. Receipts from the sale of cattle valued \$27.8 million in 1989, down by 2.7 per cent from 1988. Cash receipts for hogs were \$22.0 million in 1989 an increase of 1.1 per cent. Island hog farmers in 1989 received \$4.8 million from the provincial income stabilization program compared to \$5.8 million in 1988. Hog farmers joined the National tripartite system in April 1, 1989, and also received federal payments of \$3.7 million in 1989.

**(b) Fishing**

The Island's fishery suffered a difficult year in 1989 following several years of record catches. The value of fish landed in 1989 was \$72.4 million, which was 7.6 per cent lower than in 1988. The lobster catch was 21.3 million pounds, a decrease of 3.4 per cent from the record landings in 1988. It valued \$46.1 million, a decrease of 17.9 per cent from 1988. Average prices for lobster fell by 15.1 per cent in 1989. The volume of the groundfish harvest increased by 22.8 per cent in 1989, largely as the result of increased landings of redfish late in the year. The volume of cod landings declined by 4.6 per cent in 1989. The total groundfish harvest in 1989 valued \$6.0 million, an increase of 28.9 per cent over 1988. The pelagic and estuarial species' landings decreased in volume by 38.0 per cent due to a sharp drop in the landings of herring. Typically herring would comprise two-thirds of the landed volume of the pelagic and estuarial species, but declined to about one-half in 1989. The Province's mussel industry continued to expand rapidly in 1989 after the difficulties of late 1987. In 1989, the landed value of mussels increased by 79.8 per cent to reach \$4.3 million and the landed volumes increased by 49.8 per cent.

**(c) Forestry**

Statistical information on the Prince Edward Island forestry sector is limited. The Prince Edward Island Department of Energy and Forestry estimates that total forest production in 1989 was 545,000 cubic metres compared to 504,000 cubic metres in 1988. Of the total production in 1989 fuelwood accounted for 310,000 cubic metres.



**(d) Manufacturing**

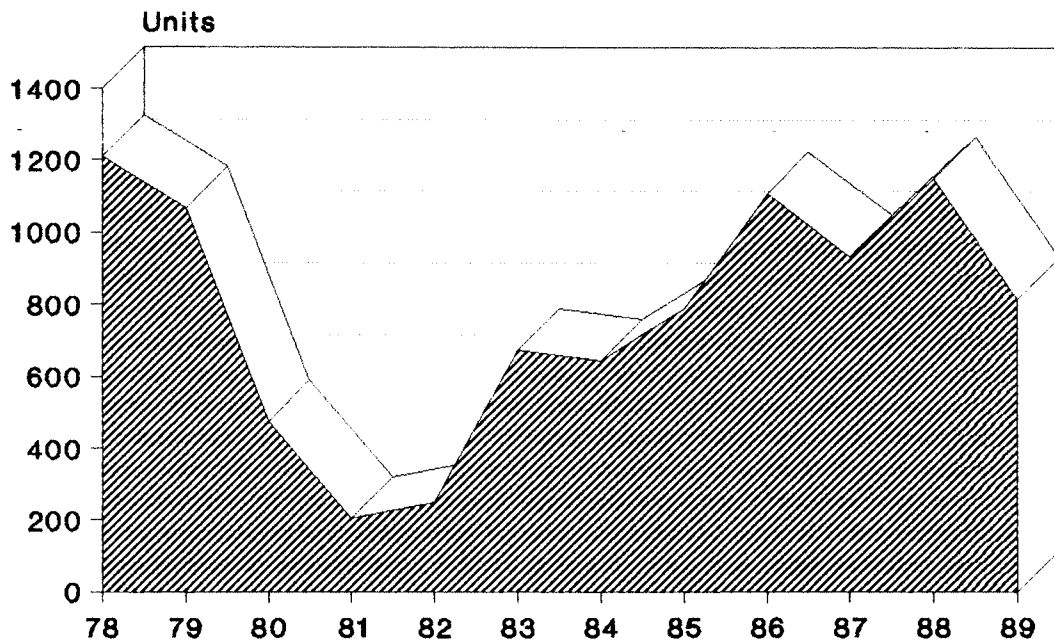
Approximately 70 per cent of manufacturing shipments from the Island's manufacturing sector are attributable to the Food and Beverage industry, which is closely related to agriculture and fishing. The total value of manufacturing shipments in 1989 rose by only 2.4 per cent over the previous year to reach \$366.0 million. The value of shipments from the Food and Beverage component of the manufacturing sector increased by 4.0 per cent in 1989 despite a decline in the fish products sector. For the non-food processing aspect of manufacturing, which accounted for approximately one-quarter of manufacturing shipments during 1989, the value of shipments declined by 0.9 per cent. This group is composed of several industries for which individual statistics are confidential.

Monthly manufacturing employment in Prince Edward Island during 1989 averaged 3,800, an increase of 200 from the previous year, according to Statistics Canada's Survey of Employment, Payroll and Hours.

**(e) Construction**

**Diagram 6**

**HOUSING STARTS  
Prince Edward Island, 1978-89**



Annual housing starts from 1978-89 are displayed in Diagram 6. The number of housing starts in 1989 was 815, compared to 1,151 in 1988, and 933 in 1987. This is likely related to the announcement of the closure of CFB Summerside. Residential construction in the Summerside area fell significantly with housing starts in 1989 falling to 33 units from 174 units in 1988. Although the number of housing starts in 1989 declined by 29.2 per cent, the value of housing construction declined only slightly, from \$131.0 million in 1988 to an estimated \$128.0 million in 1989. Estimates of expenditures in 1989 on new non-residential construction are \$158.5 million, compared to \$156.8 in 1988, and \$119.5 million in 1987. Employment in the construction sector was approximately 2,100 in 1989 compared to 2,200 in 1988 according to Statistics Canada's Survey of Employment, Payroll, and Hours.

**(f) Transportation and Utilities**

Ferries operating between Borden and Tormentine New Brunswick, Wood Island and Caribou Nova Scotia, and Souris and Grindstone (Magdalen Islands, Quebec), carried 2,455,594 passengers in 1989 which is an all time record. Passenger ferry traffic was 3.1 per cent higher than in 1988. Automobile traffic on the Marine Atlantic ferries (Borden-Tormentine) in 1989 was up by 5.3 per cent totalling 578,854 vehicles, but automobiles carried by Northumberland ferries (Wood Island-Caribou) increased only marginally from 162,989 to 163,253. Rail shipments in 1989 totalled 701 single crossings. These were the last rail shipments on ferries as in 1989 the Island's railway system was abandoned by Canadian National Railway.

Electricity utilization increased by 3.2 per cent in 1989 to reach 726,768 Mwh. Of the total electricity consumed on Prince Edward Island in 1989, 85.6 per cent was imported from New Brunswick. The share of electrical generation on Prince Edward Island has increased from negligible amounts in 1984 and 1985, to 1.9 per cent in 1986, 8.7 per cent in 1987, 12.0 per cent in 1988, and 14.4 per cent in 1989. The cost of electricity in 1989 averaged \$48.42 per month for domestic use of 500 kwh compared to \$50.20 in 1988.

**(g) Services**

The services sector includes wholesale and retail trade, financial services, insurance, real estate, accommodation and food services, health and welfare, education, services to business, and public administration and defense. These sectors now form approximately 60 per cent of the Prince Edward Island economy.

As noted earlier, the value of retail sales increased by 4.0 per cent in 1989 to reach a level of \$731.9 million. The highest sales growth in 1989 came from service stations at 23.7 per cent, hardware stores at 21.0 per cent, grocery and confectionary stores at 15.7 per cent, and sporting goods stores at 12.9 per cent. The slower pace of growth in retail sales in 1989 can be largely attributed to weak sales of new motor vehicles.

The Community, Business, and Personal Services sector is estimated by the Conference Board of Canada to be 19.4 per cent of Gross Domestic Product in 1989 and as such is the largest single sector of the Prince Edward Island economy. Monthly employment in 1989 in this sector averaged 14,300 compared to 13,700 in 1988. Data from Statistics Canada's Survey of Employment, Payroll and Hours indicates that this increase in employment can

be found entirely in the non-commercial activities of education, health and welfare. Employment by the accommodation and restaurant sector declined marginally in 1989 according to that survey.

**Diagram 7**

**EMPLOYMENT BY INDUSTRY  
P.E.I., 1981-89**



In the last decade there has been a continuous shift in the economy to service sector employment. Employment trends in the services industries relative to goods are shown in Diagram 7. Between 1981 and 1989, employment gains in the services sector accounted for the total overall increase in employment on Prince Edward Island. The movement to services employment is apparent throughout Canada. Service sector employment in Prince Edward Island in 1989 comprised 70 per cent of total employment compared to 66 per cent in 1981.

**(h) Tourism**

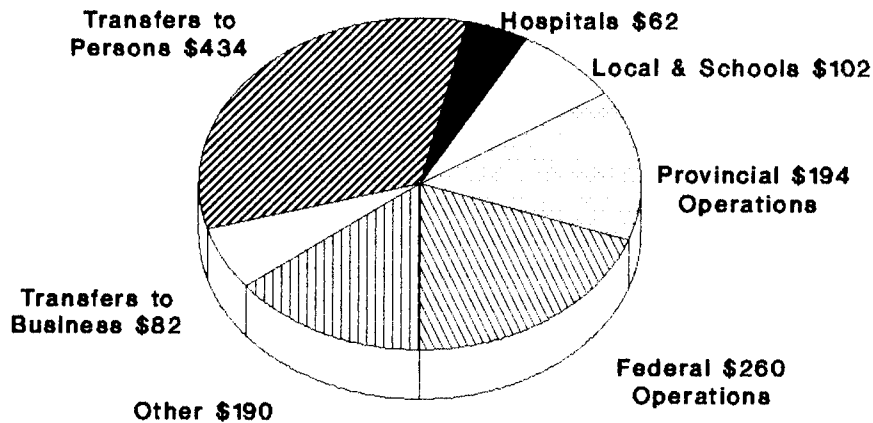
The value of expenditures by tourists increased significantly in 1989 to measure \$98.3 million, according to the Prince Edward Island Department of Tourism and Parks. Total air and auto parties visiting Prince Edward Island in 1989 numbered 249,725, an increase of 5.3 per cent over 1988. This strong growth in tourist visitation in 1989 was in part due to the special events held on the Island, such as the Royal Visit by the Duke and Duchess of York, the Boy Scout Jamboree, the World Junior Softball Championships, and the 125th Anniversary of the Charlottetown Conference of the Fathers of Confederation.

(i) **Government**

According to the Conference Board of Canada the public administration and defense sectors on Prince Edward Island accounted for 17.4 per cent of Gross Domestic Product in 1989. These numbers exclude transfer payments and activities such as education, health, and welfare which are included in the Community, Business, and Personal Services industry.

**Diagram 8**

**GOVERNMENT EXPENDITURES  
P.E.I., 1988, Millions \$**



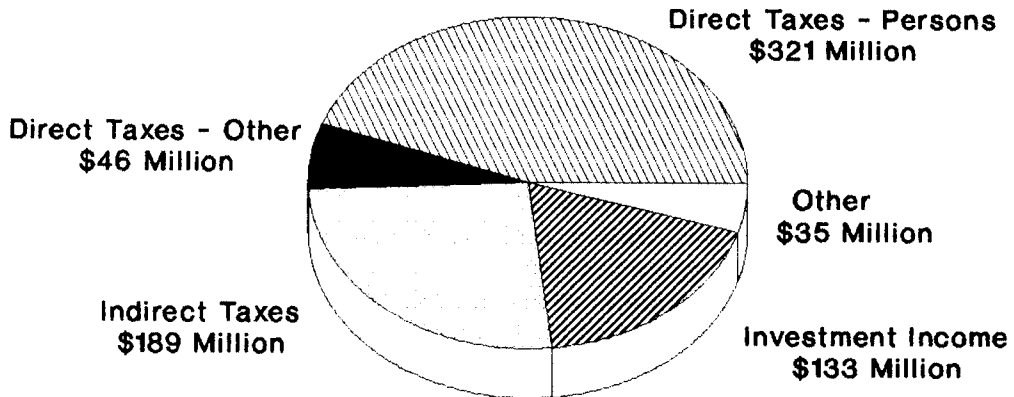
The total value of expenditures by all levels of government on Prince Edward Island totalled \$1,324 million in 1988. The composition of these expenditures is shown in Diagram 8. The largest element of expenditures by government was \$434 million in transfer payments to persons. Federal transfers to persons are dominated by Unemployment Insurance benefits and Old Age Security payments. Provincial transfers to persons are formed by direct relief and grants to post-secondary education institutions.

The second largest element of government spending in 1988 was \$260 million by the federal government on federal operations. This was on such activities as the operation of CFB Summerside, the headquarters of the Department of Veteran Affairs, and other federal government departments. The phased closure of the Summerside Airbase in 1990-1992 will cause a major reduction in federal expenditures. It impacts significantly on the Summerside area, which is estimated to depend on the Base for approximately one-third of its economy.

Provincial government's operations were valued at \$194 million in 1988. Provincial transfers also support hospitals and schools. Other expenditures consist of interest on the public debt and government capital formation.

**Diagram 9**

**GOVERNMENT REVENUE  
P.E.I., 1988**



Total revenues received in 1988 by all levels of government (excluding intergovernmental transfers) totalled \$724 million on Prince Edward Island. Diagram 9 shows the composition of these revenues by revenue source. The largest single source of revenue in 1988 was \$321 million in direct taxes from persons. In 1988, 46 per cent of provincial revenues took the form of transfers from the federal government.

Government expenditures in Prince Edward Island in 1988 exceeded revenues by \$600 million. This situation largely arises from the large federal government expenditures of \$957 million compared to federal revenues of only \$333 million that year.

**TABLE 1**  
**POPULATION AND VITAL STATISTICS**  
**PRINCE EDWARD ISLAND**

Year	June 1	January - December			
	Population ('000)	Births	Deaths	Net Migration	Marriages
1980	122.8	1,958	1,035	-730	939
1981	122.5	1,897	992	-235	849
1982	122.4	1,924	980	87	855
1983	123.7	1,907	1,050	818	938
1984	125.1	1,954	1,109	564	1,057
1985	126.0	2,008	1,110	38	956
1986	126.6	1,928	1,121	-389	970
1987	127.3	1,955	1,116	427	924
1988r	128.5	1,977	1,112	683	965
1989p	130.0	1,970	1,190	290	1,020

**Quarterly**

**1988p**

1st Quarter . . . . .	128.0 r	453 r	294 r	90 r	64 r
2nd Quarter . . . . .	128.2 r	478 r	267 r	185 r	221 r
3rd Quarter . . . . .	128.6 r	503 r	254 r	63 r	503 r
4th Quarter . . . . .	129.0 r	543 r	297 r	389 r	177 r

**1989**

1st Quarter . . . . .	129.5	440 p	300 p	59 p	70 p
2nd Quarter . . . . .	129.7	520 p	280 p	-8 p	200 p
3rd Quarter . . . . .	130.0	500 p	310 p	-108 p	570 p
4th Quarter . . . . .	130.1	510 p	300 p	347 p	180 p

Note: Yearly population figures are as of June 1 of each year. Quarterly population figures are of the first of each quarter. Population figures for 1980-April 1986 are final intercensal estimates, quarterly data for 1988 and 1989 are preliminary postcensal estimates based on the 1986 Census.

p: preliminary      r: revised

Source: Statistics Canada Catalogues; 84-001 Vital Statistics Quarterly; 84-204 Births & Deaths; 84-205 Marriages & Divorces; 91-001 Quarterly Demographic Statistics; 91-201 Estimates of Population.

**TABLE 2**  
**IN-MIGRATION TO PRINCE EDWARD ISLAND BY PROVINCE OF ORIGIN**  
**1983-84 TO 1988-89**

<b>Province of Origin</b>	<b>1983-84</b>	<b>1984-85</b>	<b>1985-86</b>	<b>1986-87</b>	<b>1987-88</b>	<b>1988-89</b>
Newfoundland . . . . .	151	139	133	113	159	192
Nova Scotia . . . . .	653	677	712	559	742	1,086
New Brunswick. . . . .	415	406	447	495	424	422
Quebec . . . . .	198	136	161	158	161	304
Ontario . . . . .	881	833	751	806	1,057	1,382
Manitoba. . . . .	62	71	77	54	83	55
Saskatchewan . . . . .	63	54	74	70	71	101
Alberta . . . . .	584	397	311	326	324	465
British Columbia. . . . .	168	171	111	109	107	164
Yukon . . . . .	24	1	10	2	4	4
Northwest Territories . .	20	19	43	26	31	41
Total In-Migration . . . . .	3,219	2,904	2,830	2,718	3,163	4,216

Note: All data for year June 1st to May 31.

Source: Statistics Canada Catalogue 91-208, International and Interprovincial Migration in Canada.

**TABLE 3**  
**OUT-MIGRATION FROM PRINCE EDWARD ISLAND**  
**BY PROVINCE OF DESTINATION**  
**1983-84 TO 1988-89**

<b>Province of Destination</b>	<b>1983-84</b>	<b>1984-85</b>	<b>1985-86</b>	<b>1986-87</b>	<b>1987-88</b>	<b>1988-89</b>
Newfoundland. . . . .	131	118	86	89	110	231
Nova Scotia . . . . .	589	686	759	776	650	806
New Brunswick. . . . .	432	390	485	472	531	503
Quebec . . . . .	80	154	111	66	133	249
Ontario . . . . .	721	804	843	962	997	1,239
Manitoba . . . . .	76	64	67	61	33	42
Saskatchewan. . . . .	19	48	51	26	42	121
Alberta. . . . .	247	233	324	202	209	289
British Columbia . . . . .	107	139	151	148	150	182
Yukon . . . . .	7	4	4	13	5	0
Northwest Territories. . . .	<u>13</u>	<u>14</u>	<u>25</u>	<u>23</u>	<u>8</u>	<u>14</u>
Total Out-Migration . . . . .	2,422	2,654	2,906	2,938	2,868	3,676

Note: All data for year June 1st to May 31.

Source: Statistics Canada Catalogue 91-208, International and Interprovincial Migration in Canada.



**TABLE 4**  
**COMPONENTS OF INTERNATIONAL AND INTERPROVINCIAL MIGRATION**  
**PRINCE EDWARD ISLAND 1967-68 TO 1988-89**

Year	INTERNATIONAL MIGRATION			INTERPROVINCIAL MIGRATION			Total Net Migration
	Immigration	Emigration	Net Migration	In Migration	Out Migration	Net Migration	
1967-68	152	565	-413	3,754	3,865	-111	-524
1968-69	187	491	-304	3,930	4,526	-596	-900
1969-70	167	459	-292	3,207	4,809	-1,602	-1,894
1970-71	176	350	-174	4,023	3,801	222	48
1971-72	181	73	108	4,299	4,009	290	398
1972-73	171	69	102	4,332	3,409	923	1,025
1973-74	354	92	262	4,756	4,254	502	764
1974-75	299	87	212	5,428	4,037	1,391	1,603
1975-76	204	72	132	4,392	3,742	650	782
1976-77	208	194	14	3,837	3,683	154	168
1977-78	174	221	-47	3,933	3,233	700	653
1978-79	172	210	-38	3,584	3,658	-74	-112
1979-80	301	148	153	3,185	3,543	-358	-205
1980-81	148	148	0	3,116	4,367	-1,251	-1,251
1981-82	145	48	97	3,375	4,231	-856	-759
1982-83	141	78	63	3,403	2,767	636	699
1983-84	112	87	25	3,219	2,422	797	822
1984-85	110	71	39	2,904	2,654	250	289
1985-86	130	66	64	2,830	2,906	-76	-12
1986-87	162	62	100	2,718	2,938	-220	-120
1987-88 r	159	44	115	3,163	2,868	295	410
1988-89 p	128	56	72	4,216	3,676	540	612

p: preliminary

Note: All data for year June 1st to May 31.

Source: Statistics Canada Catalogue 91-208, International and Interprovincial Migration in Canada.

**TABLE 5**  
**POPULATION BY SEX AND AGE GROUPS (AS OF JUNE 1)**  
**PRINCE EDWARD ISLAND ('000)**

Age Group	1987			1988			1989		
	Male	Female	Total	Male	Female	Total	Male	Female	Total
<b>Total (1)</b>	63.1	64.2	127.3	63.8	65.0	128.8	64.4	65.8	130.2
0-4	5.0	4.6	9.6	5.0	4.6	9.7	5.0	4.9	9.9
5-9	5.0	4.8	9.8	5.1	4.8	9.9	5.0	4.8	9.8
10-14	5.2	4.8	10.0	5.2	4.9	10.1	5.1	4.9	10.0
15-19	5.4	5.1	10.5	5.3	4.9	10.3	5.4	4.9	10.3
20-24	5.6	5.6	11.2	5.4	5.5	10.9	5.4	5.3	10.6
25-29	5.2	5.3	10.5	5.4	5.4	10.7	5.6	5.6	11.1
30-34	4.9	5.1	10.1	5.1	5.3	10.4	5.3	5.3	10.6
35-39	4.8	4.8	9.5	4.8	4.8	9.6	4.8	4.9	9.6
40-44	3.9	3.8	7.7	4.2	4.1	8.4	4.4	4.4	8.8
45-49	3.1	3.0	6.1	3.2	3.1	6.3	3.3	3.3	6.6
50-54	2.8	2.8	5.7	2.9	2.8	5.7	2.9	2.8	5.7
55-59	2.7	2.6	5.3	2.7	2.7	5.4	2.8	2.6	5.4
60-64	2.5	2.7	5.1	2.4	2.6	5.1	2.5	2.6	5.1
65-69	2.3	2.7	4.9	2.3	2.7	5.0	2.3	2.7	5.0
70-74	1.9	2.4	4.3	1.9	2.4	4.2	1.9	2.3	4.2
75-79	1.4	1.8	3.2	1.5	1.8	3.3	1.4	2.0	3.4
80-84	0.7	1.2	1.9	0.8	1.2	2.0	0.8	1.2	2.1
85-89	0.4	0.8	1.2	0.4	0.8	1.1	0.4	0.8	1.2
90+	0.2	0.5	0.7	0.2	0.5	0.7	0.2	0.5	0.7
<b>Broad Age Grouping (000's)</b>									
0-14	15.2	14.2	29.4	15.3	14.3	29.7	15.1	14.6	29.7
15-44	29.8	29.7	59.5	30.2	30.0	60.3	30.9	30.4	61.0
45-64	11.1	11.1	22.2	11.2	11.2	22.5	11.5	11.4	22.9
65+	6.9	9.4	16.3	7.0	9.4	16.4	7.1	9.4	16.5

p: preliminary

Note (1): 1988 and 1989 Population data were revised March 1990 to read: Total 1988 Population 128.5 and Total 1989 Population: 130.0. The revised age and sex breakdown was not available at the time of publication therefore unrevised data was included in this table.

Note: Numbers may not total due to rounding.

Source: Statistics Canada Catalogue 91-210, Postcensal Annual Estimates of Population by Marital Status, Age, Sex and Components of Growth for Canada, Provinces and Territories.

**TABLE 6**  
**POPULATION OF CITIES, TOWNS, VILLAGES AND**  
**INDIAN RESERVES IN P.E.I.**

	1981 (1)	1986 (2)		1981 (1)	1986 (2)
Abram's Village . . . . .	330 A	334	Morell . . . . .	347	359
Alberton . . . . .	1,011 A	1,103	Morell (3) . . . . .	17	12
Bedeque . . . . .	162	158	Mount Stewart . . . . .	317 A	344
Borden . . . . .	485	514	Murray Harbour . . . . .	436 A	404
Brackley . . . . .	295 A	306	Murray River . . . . .	440 A	476
Bunbury . . . . .	1,024	1,054	North River . . . . .	1,504 A	1,732
Cardigan . . . . .	321	346	North Rustico . . . . .	694 A	635
Central Bedeque . . . . .	192 A	199	O'Leary . . . . .	741 A	823
Charlottetown . . . . .	15,282	15,776	Parkdale . . . . .	2,018	2,065
Clyde River . . . . .	490 A	523	Queen's Royalty . . . . .	196	225
Cornwall . . . . .	1,841 A	1,894	Rocky Point (3) . . . . .	20	26
Crapaud . . . . .	303	332	Scotchfort (3) . . . . .	96	117
Cross Roads . . . . .	942 A	1,765	Sherbrooke . . . . .	461 A	567
East Royalty . . . . .	1,863 A	2,039	Sherwood . . . . .	5,705 A	5,769
Elliot River . . . . .	338 A	417	Souris . . . . .	1,407 A	1,379
Georgetown . . . . .	737	729	Southport . . . . .	1,302 A	1,321
Hillsborough Park . . . . .	1,036 A	996	St. Eleanors . . . . .	3,564 A	3,743
Hunter River . . . . .	289 A	317	St. Louis . . . . .	156	135
Kensington . . . . .	1,246 A	1,105	St. Peters . . . . .	254 A	265
Keppoch-Kinlock . . . . .	361 A	453	Summerside . . . . .	7,828	8,020
Kings Royalty . . . . .	177	195	Tignish . . . . .	982	960
Kinkora . . . . .	288 A	256	Tyne Valley . . . . .	161 A	187
Lennox Island (3) . . . . .	174	212	Union . . . . .	166 A	187
Linkletter . . . . .	286 A	305	Victoria . . . . .	168 A	189
Meadowbank . . . . .	202 A	258	Wellington . . . . .	381 A	405
Miltonvale Park . . . . .	941 A	1,080	West Royalty . . . . .	1,686	2,070
Miminegash . . . . .	313 A	288	Wilmot . . . . .	1,563	1,708
Miscouche . . . . .	734 A	677	Winsloe . . . . .	1,067 A	1,123
Montague . . . . .	1,957	1,994			

(1): 1981 statistics are adjusted to conform to 1986 municipal boundaries.

(2): Final Population Count of the 1986 Census of Population.

(3): Indian Reserves.

A: Adjusted figures due to boundary changes.

Source: 1986 Census of Canada, Catalogue 92-110, Population and Dwelling Counts, Prince Edward Island.

**TABLE 7**

**1986 CENSUS DATA ON POPULATION, DWELLINGS, HOUSEHOLDS AND FAMILIES**

	<b>KINGS</b>	<b>QUEENS</b>	<b>PRINCE</b>	<b>P.E.I.</b>
<b>POPULATION</b> .....	19,509	63,460	43,677	126,646
Male .....	10,085	30,915	21,895	62,895
Female .....	9,425	32,545	21,775	63,750
<b>DWELLINGS &amp; HOUSEHOLDS</b>				
Occupied Private Dwellings .....	6,050	20,985	13,665	40,690
Owned .....	5,135	14,460	10,530	30,120
Rented .....	910	6,485	3,075	10,470
On Reserve .....	5	35	60	100
Single Detached .....	5,345	14,085	10,675	30,105
Apartment, 5 or More Stories .....	-	35	-	40
Movable dwellings .....	220	715	635	1,575
All other types .....	480	6,145	2,355	8,980
Dwellings by main heating fuel				
Gas .....	60	105	105	270
Electricity .....	205	1,150	565	1,925
Oil (including Kerosene) .....	2,810	15,785	8,180	26,775
Other fuels (includes wood, coal, coke and other forms of energy) .....	2,970	3,940	4,815	11,730
<b>CENSUS FAMILIES</b>				
Families in Private Households .....	4,780	16,015	11,275	32,070
Husband-Wife Families .....	4,220	13,725	10,090	28,030
With no children at home .....	1,255	4,485	3,210	8,950
With children at home .....	2,965	9,235	6,875	19,080
Lone-Parent Families .....	565	2,290	1,185	4,040
Male parent .....	120	385	225	735
Female parent .....	435	1,905	965	3,305
Average No. of Persons per Family .....	3.5	3.3	3.4	3.4
Average No. of Children per Family (1) .....	1.6	1.5	1.5	1.5
<b>FAMILY INCOME</b>				
Under \$9,999 .....	405	1,030	845	2,285
\$ 10,000 - 29,999 .....	2,705	7,370	6,250	16,325
\$ 30,000 - 49,999 .....	1,295	5,090	3,050	9,435
\$ 50,000 + .....	385	2,520	1,125	4,030
Average Family Income (\$). .....	27,080	32,741	28,628	30,451

1: The average number of children per family is calculated using the total number of children at home and the total number of census families.

Note: Totals may not equal the sum of the components due to rounding.

Source: 1986 Census of Canada, Catalogues 94-103, Prince Edward Island Part 1, Profiles; 94-104, Prince Edward Island Part 2, Profiles.

**TABLE 8**  
**P.E.I. WORKING AGE POPULATION, LABOUR FORCE**  
**EMPLOYMENT AND UNEMPLOYMENT**  
**ANNUAL AVERAGES 1979-1989**

Year	Population ( <sup>'000</sup> )	Population 15+ ( <sup>'000</sup> )	Labour Force ( <sup>'000</sup> )	Participation Rate (%)	Employed ( <sup>'000</sup> )	Unemployed ( <sup>'000</sup> )	Unemployment Rate (%)
1979	122.0	88	52	59.0	46	6	11.2
1980	122.8	89	53	59.2	47	6	10.6
1981	122.5	90	53	58.7	47	6	11.2
1982	122.4	90	52	57.8	45	7	12.9
1983	123.7	91	55	60.3	48	7	12.2
1984	125.1	93	56	60.5	49	7	12.8
1985	126.0	94	58	61.5	50	8	13.3
1986	126.6	94	59	62.1	51	8	13.4
1987	127.3	95	60	62.9	52	8	13.2
1988	128.5	96	62	64.0	54	8	13.0
1989	130.0	97	63	65.0	54	9	14.1

**PRINCE EDWARD ISLAND LABOUR FORCE,**  
**EMPLOYMENT AND UNEMPLOYMENT, BY SEX**  
**ANNUAL AVERAGES 1985 - 1989**

		Population 15+ ( <sup>'000</sup> )	Labour Force ( <sup>'000</sup> )	Participation Rate (%)	Employed ( <sup>'000</sup> )	Unemployed ( <sup>'000</sup> )	Unemployment Rate (%)
1985	MALE . . . . .	46	33	71.8	28	4	13.1
	FEMALE . . . . .	48	25	51.7	21	...	...
1986	MALE . . . . .	46	33	71.6	29	4	13.0
	FEMALE . . . . .	48	26	52.9	22	4	14.0
1987	MALE . . . . .	46	34	72.3	29	4	12.7
	FEMALE . . . . .	49	26	53.9	23	4	13.8
1988	MALE . . . . .	47	34	73.0	30	4	11.5
	FEMALE . . . . .	49	27	55.5	23	4	14.9
1989	MALE . . . . .	47	35	73.1	30	5	13.7
	FEMALE . . . . .	50	29	57.3	24	4	14.6

... -Less than 4,000 in sample.

Source: Statistics Canada Catalogue 91-201, Estimates of Population for Canada; 71-001, The Labour Force; and 71-201 Historical Labour Force Statistics.

**TABLE 9**  
**ESTIMATES OF EMPLOYEES BY INDUSTRY**  
**PRINCE EDWARD ISLAND 1983-1989**  
('000)

	1983	1984	1985	1986	1987	1988	1989 p
<b>Industry</b>							
Manufacturing.....	3.1	2.9	3.0	3.1	3.5	3.6	3.8
Construction.....	1.6	1.5	1.3	1.6	1.8	2.2	2.1
Transportation, Communication and Other Utilities.....	3.1	3.2	3.0	3.0	3.1	3.2	3.1
Trade.....	5.3	5.3	5.4	5.7	6.3	6.7	6.7
Finance, Insurance and Real Estate .	1.2	1.2	1.3	1.4	1.4	1.5	1.5
Community, Business and Personal Services.....	10.6	10.5	10.5	11.4	13.2	13.8	14.3
Public Administration.....	4.7	4.8	4.9	4.7	4.8	5.0	5.2
Total Non-Agricultural Industries . . . .	29.6	29.6	29.7	31.0	34.1	36.2	36.6

p: preliminary

- 1: 1983 figures were averaged using March-December figures inclusive, unadjusted for seasonal variations. In April 1983 Statistics Canada implemented a new survey of Employment Payroll and Hours. As a result of this new survey employment data after April 1983 are not comparable to previous estimates of employees. For more information on this new survey see the March 1983 Supplement to Employment Earnings and Hours, catalogue number 72-002.
- 2: Adjustments to SEPH data for the period 1983-1986 are required when making comparisons with the 1987 estimates and later estimates. Information on these adjustment factors were published in the May 1987 issue of Employment, Earnings and Hours.
- 3: Does not include estimates on the following categories: Agriculture, Fishing and trapping, private households, religious organizations and the military.

Source: Statistics Canada, Catalogue 72-002 (1983-1989), Employment, Earnings and Hours.

**TABLE 10**  
**AVERAGE WEEKLY WAGES AND SALARIES,**  
**TOTAL WAGES AND SALARIES FOR P.E.I.**

Year	Average Weekly Wages and Salaries Industrial Composite (\$1)	Average Weekly Wages and Salaries Industrial Aggregate (\$1)	Total Wages and Salaries (\$ Millions)
1980	230.03	-	434.7
1981	250.13	-	482.1
1982	278.53	-	536.1
1983	295.20	-	567.7
1984	299.79	324.55	620.8
1985 r	306.74	339.30	660.6
1986 r	(a)	348.50	716.2
1987 r	(a)	362.39	782.1
1988 r	(a)	379.26	846.1
1989 p	(a)	400.87	901.3
January .....		385.71	66.6
February .....		386.29	66.7
March .....		391.56	68.1
April .....		394.25	70.0
May .....		389.46	76.6
June .....		395.30	83.3
July .....		406.22	80.3
August .....		400.90	81.4
September .....		411.78	80.7
October .....		418.11	78.3
November .....		414.39	75.1
December p .....		416.51	74.2

p: preliminary  
r: revised

1: In March 1983 Statistics Canada implemented a new survey of Employment Payroll and Hours. For more information on this new survey see the March 1983 Supplement to Employment Earnings and Hours, catalogue number 72-002. Statistics on the Industrial Composite are being updated by the more comprehensive Industrial Aggregate.

2: Adjustments to SEPH data for the period 1983-1986 are required when making comparisons with the 1987 estimates and later estimates. Information on these adjustment factors were published in the May 1987 issue of Employment, Earnings and Hours.

(a): The Industrial Composite was terminated in December of 1985.

Source: Statistics Canada Catalogues 72-002, Employment, Earnings and Hours; 72-005, Estimates of Labour Income.

**TABLE 11**  
**UNEMPLOYMENT INSURANCE STATISTICS**  
**PRINCE EDWARD ISLAND, 1977 - 1989**

Year	Employee Contributions To Unemployment Insurance (\$000's)	Total U.I. Benefits Paid In P.E.I.	Total Number Of Weeks Paid To Beneficiaries	Average Weekly Payment (\$ To Beneficiaries	Average Monthly Number Of Beneficiaries
1977	3,899	38,308,000	423,078	90.69	8,027
1978	4,347	45,500,236	453,620	100.30	8,664
1979	4,394	43,320,430	432,044	100.27	8,297
1980	4,702	46,481,771	416,422	111.62	7,950
1981	6,750	52,943,512	446,805	118.49	8,604
1982	6,784	69,025,442	527,830	130.77	9,906
1983	10,297	81,727,181	573,637	142.47	10,719
1984	11,751	98,225,366	645,995	152.05	12,393
1985	12,990	106,916,220	670,900	159.37	12,920
1986	14,015	120,047,150	696,670	172.32	12,936
1987	na	123,179,340	665,040	185.22	12,612
1988	na	138,544,830	694,800	199.41	12,695
1989	na	151,154,210	700,860	215.67	13,554

Note: 1987, 1988 and 1989 data on Employee Contributions were not available at time of publication.

Source: Statistics Canada, Catalogues 73-001, Unemployment Insurance Statistics; 73-201, Annual Report, Benefit Periods Established and Terminated Under The Unemployment Insurance Act; 73-202S, Unemployment Insurance Statistics, Annual Supplement.



**TABLE 12**  
**PERSONAL INCOME P.E.I. 1984-1988**  
**(\$ MILLIONS)**

	1984	1985	1986	1987	1988
Wages, Salaries & Supplementary Labour Income . . . . .	677	751	803	873	946
Military Pay and Allowances . . . . .	31	31	32	33	34
Net Income of Farm Operators . . . . .	63	-2	62	14	72
Net Income of Unincorporated Business . . . . .	111	125	143	162	163
Interest, Dividends and Miscellaneous Investment Income . . .	141	150	159	179	203
Total Earned Income . . . . .	1,023	1,055	1,199	1,261	1,418
Government Transfers . . . . .	323	351	379	399	434
Other Transfers . . . . .	9	8	7	7	7
Total Personal Income . . . . .	1,355	1,414	1,585	1,667	1,859
Personal Disposable Income . . . . .	1,157	1,194	1,339	1,389	1,533
Per Capita Personal Income \$ . . . . .	10,840	11,222	12,480	13,126	14,411
Per Capita Personal Income Canada \$ . . . . .	14,894	15,877	16,787	18,096	19,485
P.E.I. as a % of Canada . . . . .	72.8	70.7	74.3	72.5	74.0
Earned Income as % of Total Personal Income . . . . .	75.5	74.6	75.6	75.6	76.3

Note: The Personal Income Series has been revised.

Source: Statistics Canada Catalogue 13-201, National Income and Expenditure Accounts.

**TABLE 13**  
**GOVERNMENT TRANSFER PAYMENTS TO PERSONS**  
**PRINCE EDWARD ISLAND 1984 - 1988**  
**(\$ MILLIONS)**

	1984	1985	1986	1987	1988
<b>FEDERAL:</b>					
Family and Youth Allowance .....	13	14	14	14	14
Pensions - World Wars I & II .....	9	9	10	10	10
War Veterans' Allowance .....	9	9	9	8	7
Unemployment Insurance Benefits .....	97	107	119	122	138
Pensions to Government Employees.....	13	14	16	17	17
Old Age Security Payments .....	78	85	91	94	98
Adult Occupational Training Payments .....	1	1	-	-	-
Miscellaneous and all Other (1).....	18	19	18	18	18
<b>TOTAL FEDERAL</b> .....	<u>238</u>	<u>258</u>	<u>277</u>	<u>283</u>	<u>302</u>
<b>PROVINCIAL:</b>					
Direct Relief .....	21	21	22	24	27
Old Age and Blind Pensions .....	-	-	-	-	-
Mothers' and Disabled Persons' Allowance .....	-	-	-	-	-
Workmens' Compensation Benefits.....	3	4	5	5	6
Pensions to Government Employees.....	-	4	4	4	5
Grants to Post-Secondary Educational Institutions .....	19	18	23	26	27
Grants to Benevolent Associations .....	11	11	11	13	16
Miscellaneous .....	8	7	5	6	7
<b>TOTAL PROVINCIAL</b> .....	<u>62</u>	<u>65</u>	<u>70</u>	<u>78</u>	<u>88</u>
<b>LOCAL:</b>					
<b>TOTAL LOCAL</b> .....	-	-	-	-	-
<b>CANADA PENSION PLAN</b> .....	23	28	32	38	44
<b>TOTAL</b> .....	<u>323</u>	<u>351</u>	<u>379</u>	<u>399</u>	<u>434</u>

1: Includes re-established credits, grants to universities, assistance to immigrants, and grants from Canada Council.

Source: Statistics Canada Catalogue 13-213, Provincial Economic Accounts.

**TABLE 14**  
**P.E.I. GROSS PROVINCIAL EXPENDITURES (\$ MILLIONS)**  
**1984-1988**

	1984	1985	1986	1987	1988
Personal Expenditures on Consumer Goods & Services . . . . .	1,049	1,120	1,189	1,290	1,391
Personal Expenditures on Consumer Goods . . . . .	620	654	682	732	788
Personal Expenditures on Consumer Services . . . . .	429	466	507	558	603
Government Current Expenditures on Consumer Goods & Services . . . . .	510	539	553	555	618
Gross Fixed Capital Formation . . . . .	256	281	311	343	392
Government . . . . .	66	73	73	82	86
Residential Construction . . . . .	0	0	0	0	0
Non-Residential Construction . . . . .	53	66	63	69	74
Machinery and Equipment . . . . .	13	7	10	13	12
Business . . . . .	190	208	238	261	306
Residential Construction . . . . .	83	98	120	123	137
Non-Residential Construction . . . . .	39	41	47	50	69
Machinery and Equipment . . . . .	68	69	71	88	100
Value of Physical Change in Inventories . . . . .	24	-18	59	-50	37
Government . . . . .	0	-1	0	0	0
Business . . . . .	24	-17	59	-50	37
Non-Farm . . . . .	12	-4	23	-14	1
Farm Grain in Commercial Channels . . . . .	12	-13	36	-36	36
Total Final Expenditures . . . . .	1,839	1,922	2,112	2,138	2,438
Net Exports Plus Residual Error of Estimate . . . . .	-542	-602	-621	-556	-676
Gross Provincial Expenditure at Market Price . . . . .	1,297	1,320	1,491	1,582	1,762

Source: Statistics Canada Catalogue 13-213, Provincial Economic Accounts.

**TABLE 15**  
**PROVINCIAL GROSS DOMESTIC PRODUCT**  
**P.E.I. BY COMPONENT 1984 - 1988**  
**(\$ MILLIONS)**

	1984	1985	1986	1987	1988
Wages, Salaries & Supplementary Labour Income . . . . .	677	751	803	873	946
Military Pay and Allowances . . . . .	31	31	32	33	34
Corporation Profits before Taxes . . . . .	82	86	96	106	112
Interest and Miscellaneous Investment Income . . . . .	86	86	102	117	138
Accrued Net Income of Farm Operators from Farm Production . . . . .	63	-2	62	14	72
Net Income of Non-Farm Unincor- porated Business including Rent . . . . .	111	125	143	162	163
Inventory Valuation Adjustment . . . . .	<u>-4</u>	<u>-3</u>	<u>-7</u>	<u>-4</u>	<u>-6</u>
Net Provincial Income at Factor Cost . . . . .	1,046	1,074	1,231	1,301	1,459
Indirect Taxes . . . . .	147	147	157	170	189
Deduct					
Subsidies . . . . .	-49	-64	-70	-73	-81
Capital Consumption Allowances and Miscellaneous Valuation Adjustments . . . . .	<u>153</u>	<u>163</u>	<u>173</u>	<u>184</u>	<u>195</u>
Provincial Gross Domestic Product at Market Price . . . . .	<u>1,297</u>	<u>1,320</u>	<u>1,491</u>	<u>1,582</u>	<u>1,762</u>
Provincial Gross Domestic Product at Factor Cost . . . . .	<u>1,199</u>	<u>1,237</u>	<u>1,404</u>	<u>1,485</u>	<u>1,654</u>

Source: Statistics Canada Catalogue 13-213, Provincial Economic Accounts.

**TABLE 16**  
**PERFORMANCE OF GROSS DOMESTIC PRODUCT**  
**PRINCE EDWARD ISLAND RELATIVE TO CANADA**

Year	P.E.I. GDP at Market Prices		P.E.I. GDP at Market Prices	Canadian GDP	Canadian GDP at Market Prices	Canadian GDP in Constant \$	P.E.I. GDP in Constant \$
	\$ Millions	% Change	per capita	% Change	per capita	% Change	% Change *
1977	602	5.4	5,058.8	10.1	9,307.5	3.6	1.6
1978	682	13.3	5,636.4	10.9	10,269.1	4.6	8.1
1979	786	15.2	6,442.6	14.3	11,628.1	3.9	3.6
1980	846	7.6	6,878.0	12.2	12,880.3	1.5	-3.4
1981	1,009	19.3	8,203.3	14.8	14,610.4	3.7	-0.1
1982	1,051	4.2	8,614.8	5.1	15,209.6	-3.2	-0.9
1983	1,165	10.8	9,395.2	7.9	16,269.1	3.2	5.2
1984	1,297	11.3	10,376.0	10.0	17,805.1	6.3	4.8
1985	1,320	1.8	10,476.2	7.5	18,994.2	4.8	4.5
1986	1,491	13.0	11,740.2	5.6	19,904.2	3.1	5.6
1987	1,582	6.1	12,456.7	9.1	21,483.2	4.5	1.9
1988	1,762	11.4	13,658.9	9.3	23,216.2	5.0	7.7
1989	na	na	na	7.8	24,731.6	2.9	1.6

na: not available

\*: Conference Board of Canada

Source: Statistics Canada 13-001, National Income & Expenditure Accounts; 13-201, National Income & Expenditure Accounts, The Annual Estimates; 13-213, Provincial Economic Accounts.

**TABLE 17**  
**PROVINCIAL GROSS DOMESTIC PRODUCT AT FACTOR COST**  
**FOR SELECTED INDUSTRIES (\$ MILLIONS)**  
**PRINCE EDWARD ISLAND 1980-1984**

	1980	1981	1982	1983	1984
<b>BUSINESS SECTOR</b>					
Agriculture and Related Services.....	73.4	141.9	89.5	91.2	121.5
Fishing and Trapping .....	18.2	19.4	22.5	27.1	23.4
Logging & Forestry Industries .....	0.0	0.0	0.1	0.2	0.3
Mining, Quarrying & Oil Well .....	0.1	0.1	0.1	0.1	0.1
Manufacturing Industries .....	65.5	61.2	62.1	80.1	83.4
Food Industries .....	x	x	x	x	43.3
Wood Industries .....	2.3	1.9	1.5	2.7	6.6
Fabricated Metal Products .....	1.9	2.8	x	3.9	4.0
Transportation Equipment .....	x	2.4	x	4.6	4.3
Other Manufacturing Ind. ....	x	x	x	1.7	2.2
Construction .....	76.8	72.5	80.8	88.8	93.1
Other Utility Industries .....	14.4	16.8	22.3	23.5	18.3
Electrical Power Systems .....	13.9	16.2	21.7	22.7	17.4
Other Utility Ind. NEC.....	0.5	0.6	0.6	0.8	0.9
Educational Service Industries.....	0.1	0.1	0.1	0.1	0.1
Health Services Industry.....	15.9	18.1	20.2	23.1	25.0
Accommodation & Food Service .....	28.5	31.2	32.0	35.3	36.6
<b>NON-BUSINESS SECTOR</b>					
Forestry Services Industry .....	1.6	1.8	1.6	1.2	1.2
Water Systems Industry .....	1.2	1.2	1.4	1.4	1.3
Provincial Government Service .....	53.7	61.9	68.7	75.3	77.6
Local Government Services .....	5.6	6.4	6.9	7.4	7.9
Educational Service Industries.....	61.1	68.2	76.4	83.5	84.3
Health & Social Services Ind.....	43.2	50.1	60.9	68.0	75.0
<b>SPECIAL AGGREGATION</b>					
Business Sector-Goods .....	248.4	311.9	277.4	311.0	340.1
Non-Business Sector-Goods.....	1.2	1.2	1.4	1.4	1.3
Goods-Producing Industries .....	249.6	313.1	278.8	312.4	341.4
Total Selected Industries.....	459.3	550.9	545.6	606.3	649.1
Other Industries (1) .....	333.7	388.1	428.4	469.7	549.9
Total Gross Domestic Product at Factor Cost .....	793.0	939.0	974.0	1,076.0	1,199.0

1. Other industries were calculated by taking the difference between Total Gross Domestic Product at Factor Cost and Total Selected Industries.

x: confidential

Note: 1985 data was not available at time of publication.

Source: Table 15 in this Publication for Total Gross Domestic Product at Factor Cost, and Statistics Canada Catalogue 15-203, Provincial Gross Domestic Product at Factor Cost for Selected Industries.

**TABLE 18**  
**GROSS DOMESTIC PRODUCT BY INDUSTRY**  
**PRINCE EDWARD ISLAND**  
**(CONSTANT \$1981)**

	1984	1985	1986	1987	1988	1989
Agriculture	146.7	124.8	139.7	120.2	127.1	125.8
%	9.3	-14.9	11.9	-14.0	5.7	-1.0
Fishing	22.8	24.6	29.5	29.8	33.5	29.3
%	-5.0	7.7	20.1	1.1	12.2	-12.3
Construction	78.7	105.4	126.1	116.6	146.7	138.4
%	-2.8	33.9	19.6	-7.5	25.8	-5.7
Manufacturing	65.7	67.9	68.6	70.0	71.9	71.7
%	-3.7	3.3	1.0	2.0	2.8	-0.4
Utilities	27.5	29.0	31.4	32.4	35.2	36.5
%	51.0	5.5	8.4	3.1	8.8	3.7
Transportation	61.8	63.4	64.6	72.8	80.1	84.0
%	6.0	2.6	2.0	12.7	9.9	4.9
Trade	126.4	125.9	123.0	135.2	142.9	152.1
%	4.1	-0.4	-2.3	9.9	5.7	6.4
Finance	131.4	141.0	148.6	156.5	163.7	169.2
%	6.6	7.4	5.3	5.4	4.6	3.4
Community Business & Personal Service	201.9	221.6	240.7	254.1	271.6	281.5
%	3.4	9.8	8.6	5.6	6.9	3.6
Public Administration	209.4	216.3	211.1	217.7	224.9	230.4
%	5.7	3.3	-2.4	3.2	3.3	2.4
ALL INDUSTRIES	1,072.8	1,121.0	1,184.3	1,207.0	1,299.7	1,321.1
%	4.8	4.5	5.6	1.9	7.7	1.6

Note: % = percentage change from previous year calculated by the Conference Board.

Source: Conference Board of Canada.

**TABLE 19**  
**PUBLIC AND PRIVATE INVESTMENT BY TYPE AND BY INDUSTRY**  
**PRINCE EDWARD ISLAND (\$ MILLIONS)**

<b>Capital Expenditures by Industry</b>	<b>1984</b>	<b>1985</b>	<b>1986</b>	<b>1987</b>	<b>1988</b>	<b>1989</b>
Primary Industries and Construction . . .	39.5	31.4	28.6	40.8	45.4	44.8
New Construction . . . . .	10.4	8.8	8.8	12.8	16.1	13.5
New Machinery & Equipment . . . . .	29.1	22.6	19.8	28.0	29.3	31.3
Manufacturing . . . . .	12.4	23.3	16.2	10.8	17.8	13.3
New Construction . . . . .	2.1	9.7	4.8	1.6	2.9	0.7
New Machinery & Equipment . . . . .	10.3	13.6	11.4	9.2	14.9	12.6
Transportation . . . . .	3.0	0.9	1.7	1.4	2.5	2.5
New Construction . . . . .	0.3	0.1	0.6	0.3	0.5	0.4
New Machinery & Equipment . . . . .	2.7	0.8	1.1	1.1	2.0	2.1
Communication . . . . .	8.4	13.2	15.9	16.7	18.8	19.6
New Construction . . . . .	2.3	3.5	3.0	4.4	5.5	6.0
New Machinery & Equipment . . . . .	6.1	9.7	12.9	12.3	13.3	13.6
Miscellaneous Utilities . . . . .	6.8	4.7	6.2	14.9	9.5	16.4
New Construction . . . . .	4.9	4.0	5.8	11.2	7.8	13.3
New Machinery & Equipment . . . . .	1.9	0.7	0.4	3.7	1.7	3.1
Trade . . . . .	10.9	12.9	11.7	12.5	12.7	15.2
New Construction . . . . .	3.6	5.8	3.4	2.6	3.8	4.5
New Machinery & Equipment . . . . .	7.3	7.1	8.3	9.9	8.9	10.7
Finance . . . . .	10.4	7.4	13.9	13.5	27.4	22.7
New Construction . . . . .	7.9	4.0	10.5	9.6	22.1	17.7
New Machinery & Equipment . . . . .	2.5	3.4	3.4	3.9	5.3	5.0
Commercial Service . . . . .	16.4	13.4	23.8	22.7	23.5	39.5
New Construction . . . . .	6.2	2.4	7.9	4.5	4.6	20.1
New Machinery & Equipment . . . . .	10.2	11.0	15.9	18.2	18.9	19.4
Institutions . . . . .	10.5	27.1	30.8	26.1	20.5	22.3
New Construction . . . . .	7.7	24.0	28.5	22.9	17.7	16.8
New Machinery & Equipment . . . . .	2.8	3.1	2.3	3.2	2.8	5.5
Government Departments . . . . .	55.9	50.6	52.3	58.9	84.2	81.1
New Construction . . . . .	45.3	43.1	40.8	49.6	75.8	65.5
New Machinery & Equipment . . . . .	10.6	7.5	11.5	9.3	8.4	15.6
Housing . . . . .	49.6	87.1	122.8	115.7	131.0	128.0
New Construction . . . . .	49.6	87.1	122.8	115.7	131.0	128.0
New Machinery & Equipment . . . . .	0.0	0.0	0.0	0.0	0.0	0.0
<b>Total Capital Expenditures . . . . .</b>	<b>223.8</b>	<b>272.0</b>	<b>323.9</b>	<b>334.0</b>	<b>393.3</b>	<b>405.4</b>
New Construction . . . . .	140.3	192.5	236.9	235.2	287.8	286.5
New Machinery & Equipment . . . . .	83.5	79.5	87.0	98.8	105.5	118.9
<b>Total Repair Expenditure . . . . .</b>	<b>91.5</b>	<b>97.4</b>	<b>105.7</b>	<b>100.6</b>	<b>119.3</b>	<b>116.3</b>
New Construction . . . . .	51.5	51.9	56.8	47.1	64.6	63.3
New Machinery & Equipment . . . . .	40.0	45.5	48.9	53.5	54.7	53.0
<b>Total Capital and Repair . . . . .</b>	<b>316.2</b>	<b>369.4</b>	<b>429.6</b>	<b>434.6</b>	<b>512.6</b>	<b>521.7</b>
New Construction . . . . .	191.8	244.4	293.7	282.3	352.4	349.8
New Machinery & Equipment . . . . .	124.4	125.0	135.9	152.3	160.2	171.9

Note: 1984-1988 data are actual, 1989 data are preliminary actual.

Source: Statistics Canada, Catalogues 61-205, Private & Public Investment In Canada; 61-206, Private & Public Investment In Canada, Revised Intentions.



**TABLE 20**  
**ALL ITEMS CONSUMER PRICE INDEX**  
**CHARLOTTETOWN - SUMMERSIDE**  
**1981 = 100**

	<b>1984</b>	<b>1985</b>	<b>1986</b>	<b>1987</b>	<b>1988</b>	<b>1989</b>
January .....	117.7	122.3	126.0	129.0	133.6	137.9
February .....	118.3	123.3	126.7	129.6	134.6	138.4
March .....	118.8	123.2	126.6	130.1	135.1	139.3
April .....	119.4	123.8	126.2	130.7	135.5	139.7
May .....	119.8	123.9	126.2	130.6	135.7	141.0
June .....	120.1	124.6	125.9	131.3	136.1	141.7
July .....	120.4	125.4	127.0	132.3	136.9	142.8
August .....	120.6	125.5	127.6	132.3	137.8	142.4
September .....	120.6	126.1	127.5	132.4	137.5	143.5
October .....	121.1	125.2	127.9	133.1	138.2	143.6
November .....	121.6	125.4	128.3	133.5	138.1	144.5
December .....	121.8	125.2	128.6	133.3	137.8	144.1
Annual Averages .....	120.0	124.5	127.0	131.5	136.4	141.6
% Change .....	4.3	3.8	2.0	3.5	3.7	3.8

Note: The Consumer Price Index for each city measures price change from one time period to another within that specific city. Thus, while city C.P.I.'s show the movement of prices over time in each city, they do not indicate price level differences between cities or between cities and Canada.

Note: The Consumer Price Index for Prince Edward Island is equal to the Charlottetown-Summerside Consumer Price Index.

Source: Statistics Canada, Catalogue 62-001, The Consumer Price Index.

**TABLE 21**  
**ALL ITEMS CONSUMER PRICE INDEX**  
**CANADA 1981 = 100**

	1984	1985	1986	1987	1988	1989
January .....	120.2	124.6	130.1	135.2	140.8	146.8
February .....	120.9	125.4	130.6	135.8	141.3	147.8
March .....	121.2	125.7	130.9	136.4	142.0	148.5
April .....	121.5	126.2	131.1	137.0	142.5	149.0
May .....	121.7	126.5	131.7	137.8	143.4	150.5
June .....	122.2	127.2	131.9	138.2	143.6	151.3
July .....	122.9	127.6	132.9	139.2	144.5	152.3
August .....	122.9	127.8	133.3	139.3	144.9	152.4
September .....	123.0	128.0	133.3	139.3	145.0	152.6
October .....	123.2	128.4	134.0	139.8	145.7	153.2
November .....	124.0	128.9	134.7	140.4	146.1	153.7
December .....	124.1	129.5	134.9	140.5	146.1	153.6
Annual Averages .....	122.3	127.2	132.4	138.2	143.8	151.0
% Change .....	4.4	4.0	4.1	4.4	4.1	5.0

Note: See notes in Table 20.

Source: Statistics Canada, Catalogue 62-001, The Consumer Price Index.

**TABLE 22**  
**CONSUMER PRICE INDEX CHARLOTTETOWN - SUMMERSIDE**  
**ANNUAL AVERAGES OF MAJOR COMPONENTS 1981 = 100**

Year	Food	Housing	Clothing	Trans- portation	Health & Personal Care	Recreation Reading & Education	Tobacco & Alcohol	Energy
1982	104.8	111.6	106.1	112.0	111.0	110.0	112.8	120.1
1983	106.3	117.4	110.3	118.1	117.6	117.7	127.8	127.3
1984	111.5	122.7	111.4	122.2	123.5	122.3	138.8	135.6
1985	113.9	127.5	112.7	127.3	129.7	127.2	150.5	141.0
1986	117.9	125.9	116.4	128.7	135.1	134.0	169.4	121.1
1987	123.8	128.2	119.4	131.7	141.7	141.6	183.3	119.3
1988	127.3	132.8	124.0	133.1	149.0	149.5	198.8	119.8
1989	132.1	136.1	128.2	137.2	155.3	156.2	221.5	116.8

**CONSUMER PRICE INDEX CHARLOTTETOWN - SUMMERSIDE**  
**YEAR OVER YEAR PERCENTAGE CHANGES OF MAJOR COMPONENTS**

Year	Food	Housing	Clothing	Trans- portation	Health & Personal Care	Recreation Reading & Education	Tobacco & Alcohol	Energy
1982	4.8	11.6	6.1	12.0	11.0	10.0	12.8	20.1
1983	1.4	5.2	4.0	5.4	5.9	7.0	13.3	6.0
1984	4.9	4.5	1.0	3.5	5.0	3.9	8.6	6.5
1985	2.2	3.9	1.2	4.2	5.0	4.0	8.4	4.0
1986	3.5	-1.3	3.2	1.1	4.2	5.3	12.6	-14.1
1987	5.0	1.9	2.6	2.3	4.9	5.7	8.2	-1.5
1988	2.9	3.6	3.8	1.1	5.2	5.6	8.5	0.4
1989	3.8	2.4	3.4	3.1	4.2	4.5	11.4	-2.5

Note: See notes in Table 20.

Source: Statistics Canada, Catalogue 62-001, The Consumer Price Index.

**TABLE 23**  
**CONSUMER PRICE INDEX CANADA**  
**ANNUAL AVERAGES OF MAJOR COMPONENTS 1981 = 100**

Year	Food	Housing	Clothing	Transportation	Health & Personal Care	Recreation Reading & Education	Tobacco & Alcohol	Energy
1982	107.2	112.5	105.6	114.1	110.6	108.7	115.5	119.8
1983	111.2	120.2	109.8	119.8	118.2	115.8	130.0	129.1
1984	117.4	124.7	112.5	124.8	122.8	119.7	140.6	136.3
1985	120.8	129.0	115.6	130.8	127.2	124.5	154.0	143.9
1986	126.8	132.9	118.8	135.0	132.6	130.3	172.3	133.6
1987	132.4	138.3	123.8	139.9	139.2	137.3	183.9	137.1
1988	135.8	144.3	130.2	142.6	145.3	145.0	197.4	137.9
1989	140.9	151.9	135.5	149.9	151.7	151.4	215.7	142.7

**CONSUMER PRICE INDEX CANADA**  
**YEAR OVER YEAR PERCENTAGE CHANGES OF MAJOR COMPONENTS**

Year	Food	Housing	Clothing	Transportation	Health & Personal Care	Recreation Reading & Education	Tobacco & Alcohol	Energy
1982	7.2	12.5	5.6	14.1	10.6	8.7	15.5	19.8
1983	3.7	6.8	4.0	5.0	6.9	6.5	12.6	7.8
1984	5.6	3.7	2.5	4.2	3.9	3.4	8.2	5.6
1985	2.9	3.4	2.8	4.8	3.6	4.0	9.5	5.6
1986	4.9	3.0	2.8	3.2	4.2	4.7	11.9	-7.2
1987	4.4	4.0	4.2	3.6	5.0	5.4	6.7	2.6
1988	2.6	4.4	5.2	2.0	4.4	5.6	7.4	0.6
1989	3.7	5.2	4.0	5.1	4.4	4.4	9.3	3.4

Note: See notes in Table 20.

Source: Statistics Canada, Catalogue 62-001, The Consumer Price Index.

**TABLE 24**  
**CANADIAN INDUSTRIAL PRODUCT PRICE INDEXES**  
**FOR SELECTED COMMODITIES**  
**1981 = 100**

Year	ANNUAL AVERAGE					
	Meat, Fish & Dairy Products	Dairy Products	Fish Products	Potato Products Frozen	Lumber, Sawmill, Other Wood Products	Total All Commodities
1986	120.7	133.1	124.5	114.0	118.9	119.6
1987	125.9	136.8	142.1	118.2	121.9	112.8
1988	126.7	141.3	146.4	122.3	124.4	128.1
1989 (p)	127.8	146.1	140.0	133.7	128.3	131.1
% Change 1989/1988	0.9	3.4	-4.4	9.3	3.1	2.3
<b>1989 MONTHLY</b>						
January . . . . .	127.5	144.1	148.2	127.0	124.8	130.8
February . . . . .	127.4	144.1	145.3	127.5	125.2	130.8
March . . . . .	127.2	145.3	143.9	132.0	125.8	131.3
April . . . . .	127.1	145.7	143.2	132.0	126.4	131.3
May . . . . .	127.5	145.8	143.1	132.0	126.9	131.4
June . . . . .	128.1	145.9	143.6	132.0	129.1	131.5
July . . . . .	128.1	145.7	140.9	137.7	131.2	131.5
August . . . . .	128.0	146.1	138.2	137.7	131.5	131.4
September . . . . .	127.6	147.2	134.9	137.7	131.4	131.1
October . . . . .	127.9	147.5	132.9	136.3	130.6	130.8
November . . . . .	128.2	147.7	132.6	136.3	129.2	130.7
December . . . . .	128.7	147.9	132.8	136.3	127.7	130.3

p: preliminary

Note: The Industrial Product Price Index (IPPI) measures price changes for major commodities sold by Canadian manufacturers.

Source: Statistics Canada Catalogue 62-011, Industry Price Indexes.

**TABLE 25**  
**VALUE OF RETAIL TRADE BY KIND OF BUSINESS**  
**PRINCE EDWARD ISLAND (\$'000)**

	1983	1984	1985	1986	1987	1988	1989 p
Combination Stores (grocery and meat) . . . . .	82,490	92,026	97,326	94,704	98,846	101,143	103,865
Grocery, Confectionary and Sundries Stores . . . . .	18,050	18,111	22,330	22,972	26,725	29,721	34,392
All Other Food Stores . . . . .	1,934	2,261	2,611	3,602	3,466	4,421	4,508
Department Stores . . . . .	67,431	70,304	69,218	71,232	81,762	88,843	88,866
General Merchandise Stores . . . . .	x	21,525	x	x	x	x	x
General Stores . . . . .	10,022	9,694	14,324	14,437	15,090	17,346	19,308
Motor Vehicle Dealers . . . . .	88,116	101,459	115,761	124,869	142,815	157,543	152,268
Service Stations . . . . .	x	42,890	38,259	31,490	35,062	41,702	51,606
Garages . . . . .	x	758	x	x	x	x	x
Automotive Parts & Accessories Stores . . . . .	x	20,341	x	18,389	23,062	23,505	24,024
Men's Clothing Stores . . . . .	x	3,554	x	x	x	x	x
Women's Clothing Stores . . . . .	6,437	7,753	x	9,542	10,683	10,866	11,257
Family Clothing Stores . . . . .	4,671	4,408	4,629	6,261	7,590	8,656	9,247
Hardware Stores . . . . .	1,842	3,112	3,599	5,467	7,845	9,308	11,262
Pharmacies, Patent Medicine and Cosmetic Stores . . . . .	21,497	22,454	26,201	30,574	34,120	42,863	46,354
Jewellery Stores . . . . .	x	1,653	x	x	x	x	x
Sporting Goods and Accessories Stores . . . . .	3,766	4,493	4,544	5,049	6,349	6,554	7,399
Personal Accessories Stores . . . . .	2,992	4,068	4,927	5,879	8,118	8,538	9,313
All Other Stores . . . . .	53,825	63,168	64,602	70,031	79,115	90,668	93,938
Total All Stores . . . . .	471,714	520,721	547,510	577,327	640,591	703,536	731,946

x: confidential      p: preliminary

Source: Statistics Canada, Catalogue 63-005, Retail Trade.

**TABLE 26**  
**NEW MOTOR VEHICLE SALES**  
**PRINCE EDWARD ISLAND 1982-1989**

Year	Value of New Motor Vehicles Sold (\$'000)			Number of New Motor Vehicles Sold		
	Passenger Cars	Commercial Vehicles	Total New Motor Vehicles	Passenger Cars	Commercial Vehicles	Total New Motor Vehicles
1982	25,748	9,133	34,881	2,898	857	3,755
1983	39,671	13,842	53,513	4,100	1,215	5,315
1984	48,663	19,128	67,791	4,761	1,547	6,308
1985	49,263	22,744	72,007	4,559	1,677	6,236
1986	50,212	22,672	72,884	4,270	1,633	5,903
1987	50,989	30,057	81,046	4,084	1,909	5,993
1988	55,829	34,822	90,651	4,099	2,080	6,179
1989	48,972	33,278	82,250	3,369	1,847	5,216
<b>1989 Monthly</b>						
January . . . . .	2,286	2,480	4,766	164	136	300
February . . . . .	2,741	2,079	4,820	190	117	307
March . . . . .	3,848	2,622	6,470	274	151	425
April . . . . .	6,497	3,923	10,420	452	231	683
May . . . . .	5,578	3,017	8,595	386	165	551
June . . . . .	5,960	3,471	9,431	414	183	597
July . . . . .	4,167	3,371	7,538	289	177	466
August . . . . .	4,915	2,356	7,271	340	134	474
September . . . . .	3,652	2,162	5,814	243	125	368
October . . . . .	4,125	2,802	6,927	271	147	418
November . . . . .	2,770	2,679	5,449	190	155	345
December . . . . .	2,433	2,316	4,749	156	126	282

Source: Statistics Canada, Catalogue 63-007, New Motor Vehicle Sales.

**TABLE 27**  
**INTERNATIONAL EXPORTS FROM PRINCE EDWARD ISLAND**  
**BY PRINCIPAL TRADING AREAS (\$'000)**  
**1984 - 1989**

	1984	1985	1986	1987	1988	1989p
United States . . . . .	73,277	73,530	87,537	106,398	88,039	105,786
Venezuela . . . . .	9,445	5,108	6,974	10,575	8,560	4,126
France . . . . .	1,658	2,486	3,076	6,537	6,517	8,111
Trinidad-Tobago . . . . .	4,292	4,203	7,096	6,513	4,848	4,223
Japan . . . . .	3,036	2,556	11,247	8,435	4,721	6,391
Italy . . . . .	3,268	1,244	896	1,603	4,630	958
Other Countries . . . . .	32,836	24,116	29,369	21,259	22,839	31,588
Total Exports . . . . .	127,812	113,243	146,195	161,320	140,154	161,183

**BY MAJOR COMMODITIES (\$'000)**  
**1984 - 1989**

	1984	1985	1986	1987	1988	1989p
Live Animals . . . . .	889	1,369	271	320	452	468
Food, Feed, Beverage & Tobacco . . . . .	107,914	95,370	124,357	135,626	122,316	137,851
Crude Material . . . . .	4,773	4,121	4,230	5,210	3,472	6,175
Fabricated Materials Inedible . . . . .	6,521	3,195	1,421	3,413	1,264	4,410
End Products Inedible . . . . .	7,629	8,571	15,795	16,705	12,515	11,983
Special Transactions Trade . . . . .	86	104	73	43	59	49
Other . . . . .	0	513	48	3	76	247
TOTAL DOMESTIC EXPORTS	127,812	113,243	146,195	161,320	140,154	161,183

p: preliminary

Note: The export data was converted to the Harmonized Commodity and Coding Description (H.S. Based) in 1988. Therefore users should use caution when trying to compare 1988 and 1989 data to previous years.

Source: Statistics Canada, special tabulations from Catalogues 65-003, Exports By Country (H.S. Based); 65-004, Exports By Commodity.



**TABLE 28**  
**PERSONAL INCOME TAX RETURNS, PRINCE EDWARD ISLAND**  
**INCOME AND TAXES PAID, 1983 - 1987**

	1983	1984	1985	1986	1987
All Returns (no.) . . . . .	69,470	72,182	70,823	75,830	78,470
Total Income (\$'000) . . . . .	914,200	989,600	1,044,300	1,146,900	1,257,900
Average Income (\$) . . . . .	13,160	13,710	14,745	15,125	16,030
Taxable Returns (no.) . . . . .	50,514	52,614	52,849	56,670	58,900
Total Income (\$'000) . . . . .	858,400	927,900	987,100	1,085,900	1,192,100
Average Income (\$) . . . . .	16,993	17,636	18,678	19,162	20,239
Federal Tax (\$'000) . . . . .	71,200	77,500	90,500	110,000	127,200
Provincial Tax (\$'000) . . . . .	44,700	48,300	52,000	58,500	70,700
Total Tax (\$'000) . . . . .	115,900	125,800	142,600	168,500	197,800
Average Tax (\$) . . . . .	2,294	2,391	2,698	2,973	3,360

**ALL RETURNS BY COUNTIES AND SELECTED LOCALITIES, 1987**

	All Returns			Taxable Returns			
	Number of Returns	Average Income (\$)	Total Income (\$'000)	Number of Returns	Average Income (\$)	Total Income (\$'000)	Total Tax Payable (\$'000)
Kings . . . . .	11,270	14,590	164,426	8,720	17,903	156,114	24,257
Prince . . . . .	27,460	14,526	398,878	20,710	18,241	377,762	59,999
Queens . . . . .	39,490	17,075	674,309	30,060	21,400	643,285	113,084
Total P.E.I. . . . .	78,220	15,822	1,237,612	59,490	19,788	1,177,161	197,341
Charlottetown (1) . . . . .	20,540	18,248	374,807	15,590	22,945	357,717	65,521

(1): Charlottetown is defined by the boundaries used in the 1981 Census of Population.

Note: All Returns consists of Taxable Returns (returns with positive taxable income) plus those returns filed with zero taxable income.

Note: Totals may differ between tables due to rounding and confidentiality adjustments.

Source: Revenue Canada Taxation, Taxation Statistics.

**TABLE 29**  
**PERSONAL INCOME TAX RETURNS, 1987 TAXATION YEAR,**  
**ALL RETURNS BY INCOME, PRINCE EDWARD ISLAND**

<b>Taxable Returns</b>	<b>Number</b>	<b>%</b>	<b>Total Income (\$'000)</b>	<b>%</b>	<b>Taxable Income (\$'000)</b>	<b>%</b>	<b>Total Tax (\$'000)</b>	<b>%</b>
Under \$5,000 .....	350	0.6	1,642	0.1	65	0.0	6	0.0
\$5,000 to 6,000 .....	1,940	3.3	10,816	0.9	1,554	0.2	160	0.1
\$6,000 to 8,000 .....	4,610	7.8	32,563	2.7	8,438	1.2	1,268	0.6
\$8,000 to 10,000 .....	5,790	9.8	52,338	4.4	18,856	2.6	3,673	1.8
10,000 to 15,000 .....	13,610	23.1	167,056	14.0	77,882	10.9	17,513	8.8
15,000 to 20,000 .....	10,710	18.2	185,515	15.5	105,858	14.8	26,392	13.3
20,000 to 25,000 .....	6,730	11.4	149,706	12.5	93,053	13.0	24,470	12.3
25,000 to 30,000 .....	4,850	8.2	133,611	11.2	85,725	12.0	23,265	11.7
30,000 to 40,000 .....	5,850	9.9	200,821	16.8	136,021	19.0	38,715	19.5
40,000 to 50,000 .....	2,390	4.1	106,011	8.9	74,915	10.5	22,917	11.5
50,000 and over .....	2,130	3.6	155,620	13.0	112,052	15.7	40,362	20.3
Grand Total .....	58,970	100.0	1,195,696	100.0	714,418	100.0	198,741	100.0

<b>All Returns</b>	<b>Number</b>	<b>%</b>	<b>Total Income (\$'000)</b>	<b>%</b>	<b>Taxable Income (\$'000)</b>	<b>%</b>	<b>Total Tax (\$'000)</b>	<b>%</b>
Under \$5,000 .....	15,180	19.4	29,565	2.3	69	0.0	6	0.0
\$5,000 to 6,000 .....	3,270	4.2	18,193	1.4	1,554	0.2	160	0.1
\$6,000 to 8,000 .....	6,360	8.1	44,478	3.5	8,548	1.2	1,268	0.6
\$8,000 to 10,000 .....	6,740	8.6	60,541	4.8	18,888	2.6	3,673	1.8
10,000 to 15,000 .....	13,990	17.8	171,502	13.6	78,039	10.9	17,513	8.8
15,000 to 20,000 .....	10,820	13.8	187,281	14.9	106,060	14.8	26,392	13.3
20,000 to 25,000 .....	6,770	8.6	150,487	11.9	93,197	13.0	24,470	12.3
25,000 to 30,000 .....	4,870	6.2	134,148	10.6	85,794	12.0	23,265	11.7
30,000 to 40,000 .....	5,880	7.5	201,752	16.0	136,143	19.0	38,715	19.5
40,000 to 50,000 .....	2,410	3.1	106,596	8.5	75,116	10.5	22,917	11.5
50,000 and over .....	2,140	2.7	156,059	12.4	112,070	15.7	40,362	20.3
Grand Total .....	78,400	100.0	1,260,601	100.0	715,479	100.0	198,741	100.0

See general notes on Table 28.

Source: Revenue Canada Taxation, Taxation Statistics.

**TABLE 30**  
**PERSONAL INCOME TAX RETURNS, 1987**  
**ALL RETURNS BY OCCUPATION FOR PRINCE EDWARD ISLAND**

	Number	Total Income (\$'000)	Average Income \$	Taxable Income (\$'000)	Total Tax (\$'000)
Employees of Businesses .....	25,400	405,355	15,959	235,398	66,314
Employees of Institutions .....	4,330	81,934	18,922	48,036	13,443
Teachers and Professors .....	950	32,895	34,626	22,277	6,786
Federal Employees .....	2,300	74,295	32,302	50,919	16,155
Provincial Employees .....	6,180	134,120	21,702	82,270	23,689
Municipal Employees .....	900	16,247	18,052	9,454	2,696
Armed Forces .....	1,100	34,195	31,086	22,647	6,686
Federal Crown Corp. ....	960	27,481	28,626	18,007	5,327
Provincial Crown Corp. ....	270	5,426	20,096	3,066	820
Unclassified Employees .....	3,810	38,010	9,976	18,582	4,644
<b>TOTAL EMPLOYEES .....</b>	<b>46,200</b>	<b>849,960</b>	<b>18,397</b>	<b>510,656</b>	<b>146,560</b>
Farmers .....	2,220	38,044	17,137	20,519	3,878
Fishermen .....	2,290	55,028	24,030	37,272	8,887
<b>TOTAL FARMERS AND FISHERMEN .....</b>	<b>4,510</b>	<b>93,072</b>	<b>20,637</b>	<b>57,791</b>	<b>12,765</b>
Accountants .....	40	2,261	56,525	1,420	505
Medical Doctors and Surgeons .....	130	12,371	95,162	9,262	3,948
Dentists .....	20	1,440	72,000	1,055	419
Lawyers and Notaries .....	50	2,811	56,220	1,925	708
Engineers and Architects .....	0	0	0	0	0
Entertainers and Artists .....	60	575	9,583	212	52
Other Professionals .....	140	3,252	23,229	1,894	616
<b>TOTAL PROFESSIONALS .....</b>	<b>450</b>	<b>22,874</b>	<b>50,831</b>	<b>15,892</b>	<b>6,290</b>
Salesmen .....	130	2,731	21,008	1,635	504
Forestry Operators .....	30	330	11,000	136	35
Manufacturers .....	80	961	12,013	557	132
Construction .....	380	6,549	17,234	3,680	1,001
Public Util. & Transport Operators .....	410	6,740	16,439	3,572	838
Wholesale Traders .....	20	299	14,950	298	87
Retail Traders .....	770	10,975	14,253	5,757	1,553
Insurance Agency Operators .....	0	0	0	0	0
Real Estate Agency Operators .....	0	0	0	0	0
Recreational Services Operators .....	20	483	24,150	283	87
Business Services Operators .....	20	366	18,300	182	50
Other Services Operators .....	910	10,374	11,400	5,290	1,418
Other Business Proprietors .....	30	406	13,533	219	55
<b>TOTAL BUSINESS PROPRIETORS .....</b>	<b>2,690</b>	<b>37,918</b>	<b>14,096</b>	<b>20,167</b>	<b>5,319</b>
Investors .....	2,800	61,486	21,959	32,136	8,158
Property Owners .....	370	7,817	21,127	4,160	1,399
<b>TOTAL INVESTMENT .....</b>	<b>3,170</b>	<b>69,303</b>	<b>21,862</b>	<b>36,296</b>	<b>9,557</b>
Pensioners .....	7,140	82,473	11,551	28,174	7,223
Unclassified .....	14,100	102,269	7,253	44,869	10,523
<b>GRAND TOTAL .....</b>	<b>78,400</b>	<b>1,260,601</b>	<b>16,079</b>	<b>715,479</b>	<b>198,741</b>

Note: For the breakdowns with less than ten non-taxable filers, the number of taxfilers in that breakdown is rounded to the nearest ten for the all-returns table and the corresponding taxable-returns table. The appropriate subtotal and total counts are edited when necessary to guard against residual disclosure.

Source: Revenue Canada Taxation, Taxation Statistics.

**TABLE 31**  
**VALUE OF BUILDING PERMITS BY TYPE**  
**PRINCE EDWARD ISLAND 1983 - 1989**

Year	Total (\$'000)	Residential (\$'000)	Non-Residential (\$'000)
1983	74,401	32,381	42,020
1984	77,760	37,127	40,633
1985	87,399	43,692	43,707
1986	106,865	65,897	40,968
1987	123,557	72,028	51,529
1988	173,138	86,962	86,176
1989*	143,030	71,011	72,019

\* 1989 figures are for January to November.

Source: Statistics Canada, Catalogue 64-001, Building Permits.

**TABLE 32**  
**NUMBER OF BUILDING PERMITS BY TYPE OF DWELLING**  
**PRINCE EDWARD ISLAND 1983 - 1989**

Year	Single Family Dwelling	Semi- detached	Apartment and Row Housing Units	Total
1983	466	38	240	744
1984	490	56	192	738
1985	554	80	223	857
1986	696	88	334	1,118
1987	730	96	189	1,015
1988	786	66	357	1,209
1989	598	32	391	1,021

Source: P.E.I. Housing Corporation.

**TABLE 33**  
**NUMBER OF BUILDING PERMITS BY COUNTY**  
**PRINCE EDWARD ISLAND**

<b>Year</b>	<b>Prince County</b>	<b>Queens County</b>	<b>Kings County</b>	<b>Total P.E.I.</b>
1982	133	188	98	419
1983	196	424	124	744
1984	167	445	126	738
1985	272	473	112	857
1986	271	722	125	1,118
1987	337	555	123	1,015
1988	358	748	103	1,209
1989	183	730	108	1,021

**1989 Monthly**

January . . . . .	1	8	0	9
February . . . . .	6	35	0	41
March . . . . .	8	30	6	44
April . . . . .	32	77	12	121
May . . . . .	13	91	11	115
June . . . . .	52	116	20	188
July . . . . .	3	51	12	66
August . . . . .	27	34	16	77
September . . . . .	16	39	12	67
October . . . . .	14	156	7	177
November . . . . .	6	46	11	63
December . . . . .	5	47	1	53

Source: P.E.I. Housing Corporation.

**TABLE 34**  
**HOUSING STARTS, COMPLETIONS AND UNDER CONSTRUCTION**  
**BY YEAR AND QUARTER FOR PRINCE EDWARD ISLAND**  
**1985-1989**

Year & Quarter	Starts	Completions	Under Construction
<b>1985</b> .....	788	757	*
1st. ....	43	123	302
2nd. ....	235	216	321
3rd. ....	259	206	381
4th. ....	251	212	420
<b>1986</b> .....	1,110	1,176	*
1st. ....	122	246	285
2nd. ....	430	159	556
3rd. ....	310	294	590
4th. ....	248	477	362
<b>1987</b> .....	933	943	*
1st. ....	89	184	251
2nd. ....	396	132	517
3rd. ....	305	294	528
4th. ....	143	333	338
<b>1988</b> .....	1,151	993	*
1st. ....	107	158	286
2nd. ....	427	187	528
3rd. ....	328	234	622
4th. ....	289	414	497
<b>1989</b> .....	815	927	*
1st. ....	83	255	322
2nd. ....	320	167	474
3rd. ....	228	262	441
4th. ....	184	243	380

\*: Figure is not calculable.

Source: Statistics Canada Catalogue 64-002, Housing Starts & Completions.

**TABLE 35**  
**HOUSING STARTS BY TYPE OF UNIT**  
**PRINCE EDWARD ISLAND**  
**1975 TO 1989**

<b>Year</b>	<b>Total Starts</b>	<b>Single-Detached</b>	<b>Semi-detached and Duplex</b>	<b>Row Houses</b>	<b>Apartments and Other</b>
1975	847	733	22	0	92
1976	842	746	59	0	37
1977	824	577	16	10	221
1978	1,210	990	45	51	124
1979	1,068	801	18	28	221
1980	475	348	33	0	94
1981	203	201	2	0	0
1982	248	179	0	0	69
1983	673	380	30	12	251
1984	643	416	44	5	178
1985	788	559	50	6	173
1986	1,110	783	74	9	244
1987	933	699	88	0	146
1988	1,151	704	55	69	323
1989	815	456	32	8	319

Note: Single-Detached comprises only one-dwelling units completely separated on all sides.

- : Semi-detached includes each one of two dwellings separated by a common wall extending from ground to roof, or by a garage. Linked houses were included in this category prior to 1982, but are now included with single-detached. Similarly, duplexes which are described as double dwellings, one above the other, are now included with the category "apartments and other".
- : Row comprises only single-attached houses in a row of three or more dwellings. Row duplexes are not included in the "row" category, but are classified to "apartments and other".
- : Apartment and Other includes dwelling units found in a wide range of structures such as: duplexes, double-duplexes, triplexes, row-duplexes, apartments proper and dwellings over, or at the back of, a store or other non-residential structure.

Source: Statistics Canada Catalogue 64-002, Housing Starts and Completions and Canada Mortgage and Housing Corporation.

**TABLE 36**  
**FARM CASH RECEIPTS**  
**PRINCE EDWARD ISLAND**  
**(\$'000)**

	1984	1985	1986	1987	1988	1989p
Grains (1) .....	3,422	3,946	3,931	3,234	4,569	5,516
Potatoes .....	71,873	53,777	57,754	79,935	63,125	119,046
Fruits .....	1,425	1,296	2,064	2,199	2,005	1,626
Vegetables .....	5,283	5,066	4,456	4,582	5,399	5,714
Tobacco .....	14,814	11,116	10,021	12,536	11,522	11,194
Other Crops (2) .....	2,589	1,843	2,332	2,082	1,931	2,170
Total Crops .....	99,406	77,044	80,558	104,568	88,551	145,266
Cattle & Calves .....	24,931	25,692	28,457	29,377	28,634	27,945
Hogs .....	22,608	21,606	25,436	26,567	21,759	21,995
Sheep & Lambs .....	223	248	268	204	231	208
Dairy Products .....	28,708	27,919	30,552	31,894	37,095	36,812
Poultry .....	899	991	1,560	1,254	2,222	2,054
Eggs .....	2,914	2,828	2,990	2,952	2,932	3,161
Other Livestock & Products .....	1,390	2,419	1,522	3,856	2,625	2,026
Total Livestock & Products .....	81,673	81,703	90,785	96,104	95,498	94,201
Other Cash Receipts (3) .....	10,077	12,528	14,730	12,837	23,150	14,325
Total Cash Receipts .....	191,156	171,275	186,073	213,509	207,199	253,792

p: preliminary

(1) Wheat, Oats and Barley

(2) Floriculture and nursery are included in other crops.

(3) "Other Cash Receipts" is made up of forest and maple, dairy subsidy, deficiency payments and provincial stabilization payments.

Source: Statistics Canada Catalogue 21-001, Farm Cash Receipts; and 21-603E, Agriculture Economic Statistics.



**TABLE 37**  
**INCOME OF FARM OPERATORS FROM FARMING OPERATIONS**  
**PRINCE EDWARD ISLAND**  
**(\$'000)**

Year	(1) Cash Receipts from Farm Production	(2) Income in Kind	(3) Realized Gross Income	(4) Operating & Depreciation Charges	(5) Realized Net Income	(6) Value of Inventory Changes	(7) Total Net Income
1981	189,578	2,898	192,476	132,299	60,177	20,785	80,962
1982	161,900	2,373	164,273	142,113	22,160	788	22,948
1983	172,332	2,403	174,735	149,379	25,356	-4,933	20,423
1984	191,156	2,417	193,573	155,713	37,860	17,790	55,650
1985	171,275	2,357	173,632	160,421	13,211	1,174	14,385
1986	186,073	2,195	188,268	162,034	26,234	-3,562	22,672
1987	213,509	1,994	215,503	164,487	51,016	-8,172	42,844
1988	207,199	2,141	209,340	173,434	35,906	8,843	44,749

Note: Realized Gross Income (3) = (1 + 2)  
Realized Net Income (5) = (3-4)  
Total Net Income (7) = (3 + 6) - 4

Note: 1989 data was not available at time of publication.

Source: Statistics Canada Catalogue 21-603E, Agriculture Economic Statistics.

**TABLE 38**  
**CAPITAL VALUE OF ALL FARMS IN P.E.I. 1982 - 1988**  
**(\$ MILLIONS)**

Year	(1) Total	Land and Buildings	(2) Implements & Machinery	(3) Livestock & Poultry
1982	688	455	156	77
1983	713	479	158	75
1984	720	480	164	76
1985	744	505	165	73
1986	737	490	171	76
1987	732	486	167	79
1988 p	729	482	169	78

p: preliminary

1: All items have been rounded to \$ million and thus totals may not add due to rounding.

2: Automobiles and motor trucks are included in this area.

3: Livestock and poultry includes the value of animal and fur farms.

Source: Statistics Canada Catalogue 21-603E, Agriculture Economic Statistics.

**TABLE 39**  
**INDEX OF FARM PRODUCTION**  
**PRINCE EDWARD ISLAND 1981 = 100**

Year	Index of Crop Production	Index of Livestock Production	Index of Farm Production
1980	70.2	99.0	81.4
1981	100.0	100.0	100.0
1982	97.8	105.5	100.8
1983	87.6	106.2	94.8
1984	104.4	104.7	104.5
1985	93.2	104.4	97.5

Note: The time base for this table has been set to 1981 = 100 while the table in the Annual Statistical Review prior to 1984 was set to 1971 = 100. Years prior to 1980 can be viewed in Statistics Canada publication 21-203.

Note: 1986 data not available at time of publication.

Source: Statistics Canada Catalogue 21-603E, Agriculture Economic Statistics.

**TABLE 40**  
**FARM PRODUCT PRICE INDEX, P.E.I.**  
**1981 = 100**

Year	Crops	Livestock and Animal Products	Total
1983	74.4	96.1	83.6
1984	87.0	102.4	93.5
1985	69.7	101.2	83.0
1986	66.3	108.6	84.2
1987 r	91.5	114.1	101.1
1988 p	79.1	111.3	92.8
1989 p	111.9	112.2	112.1
<b>1989 Monthly</b>			
January .....	92.0	108.8	99.1
February .....	95.2	111.8	102.3
March .....	116.9	112.7	115.1
April .....	123.8	110.0	118.0
May .....	137.9	109.6	125.9
June .....	140.7	112.1	128.6
July .....	127.2	110.8	120.3
August .....	129.5	114.5	123.2
September .....	98.5	112.7	104.5
October .....	88.8	115.2	99.9
November .....	94.1	114.7	102.8
December .....	98.5	113.7	105.0

r: revised

p: preliminary

Note: In 1986 this index was updated to (1981 = 100).

Source: Statistics Canada Catalogue 62-003, Farm Product Price Index.

**TABLE 41**  
**COMPARISON OF SELECTED CENSUS FARM DATA**  
**PRINCE EDWARD ISLAND 1976, 1981 & 1986**

	1976	1981	1986
Total Number of Census Farms . . . . .	3,677	3,154	2,833
Total Farm Population . . . . .	15,790	12,015	10,275
Total Land Area (acres) . . . . .	1,399,040	1,399,040	1,399,040
Area in Census Farms (acres) . . . . .	731,035	699,367	673,196
Use of Farm Lands (acres) . . . . .			
Improved Land . . . . .	503,558	500,853	460,399
Cropland (1) . . . . .	391,534	391,118	386,715
Pasture . . . . .	95,787	89,521	55,899
Other . . . . .	16,237	20,214	17,785
Unimproved Land . . . . .	227,477	198,514	212,797
Woodland . . . . .	184,471	161,697	151,225
Other . . . . .	43,006	36,817	61,572
Total Capital Value (\$) . . . . .	326,480,636	699,470,045	738,631,854
Value of Land and Buildings (\$) . . . . .	218,193,757	478,844,864	489,544,771
Value of Machinery & Equipment (\$) . . . . .	75,180,649	148,971,254	170,804,062
Value of Livestock & Poultry (\$) . . . . .	33,106,230	71,653,927	78,283,021

1: Cropland includes the total area of all field crops, plus the acres of fruits, vegetables, greenhouse, mushroom houses and nursery products.

Note: The 1986 Census defines a census farm as a farm, ranch or other agricultural holding with sales of agricultural products of \$250 or more during the 12 months period prior to the Census. Operations which anticipated sales of \$250 or more in 1981 were also included. Comparisons between 1986 data and previous censuses are made in this table and the next three tables. The 1976 data refers to census farms with sales of \$1,200 or more during the year 1975.

Source: Statistics Canada 1981 Census of Canada, Catalogue 92-901 and 1986 Census of Canada, Catalogue 94-129, Population: Canada, provinces, urban size groups, rural non-farm and rural farm acres. Statistics Canada 1986 Census of Agriculture, Catalogue 96-104, Prince Edward Island.

**TABLE 42**  
**CENSUS FARM DATA CLASSIFIED BY SALES CLASS**  
**PRINCE EDWARD ISLAND 1976, 1981 & 1986**

Total Value of Agricultural Products Sold	1976		1981		1986	
	Number of Farms	%	Number of Farms	%	Number of Farms	%
\$250,000 and over . . . . .	-- 149	4.0	82	2.6	152	5.4
\$100,000 - 249,999 . . . . .			299	9.5	401	14.2
\$50,000 - 99,999 . . . . .	224	6.1	414	13.1	433	15.3
\$25,000 - 49,999 . . . . .	367	10.0	473	15.0	422	14.9
\$10,000 - 24,999 . . . . .	727	19.8	569	18.0	496	17.5
\$5,000 - 9,999 . . . . .	543	14.8	386	12.2	292	10.3
\$2,500 - 4,999 . . . . .	514	14.0	362	11.5	262	9.2
Under \$ 2,500 . . . . .	1,146	31.1	569	18.1	375	13.2
Institutional Farms . . . . .	7	0.2	(1)	-	(1)	-
Total Number of Farms . . . . .	3,677	100.0	3,154	100.0	2,833	100.0

1: In 1981 and 1986 all Institutional farms are included in their specific class. See note in Table 38 for definitions.

Source: Statistics Canada 1986 Census of Agriculture, Catalogue 96-104, Prince Edward Island; Statistics Canada 1981 Census of Agriculture, Catalogue 96-903, Prince Edward Island.

**TABLE 43**  
**FARMS WITH SALES OF \$2,500 OR MORE**  
**CLASSIFIED BY TYPE OF PRODUCT**  
**PRINCE EDWARD ISLAND 1976, 1981 & 1986**

Product Type	1976		1981		1986	
	Number of Farms	%	Number of Farms	%	Number of Farms	%
Dairy .....	846	33.5	768	29.7	584	23.7
Cattle .....	334	13.2	547	21.2	652	26.5
Hogs .....	216	8.6	255	9.9	221	9.0
Poultry .....	19	0.8	26	1.0	28	1.1
Wheat .....	13	0.5	5	0.2	4	0.1
Small Grains (excluding Wheat Farms) .....	126	5.0	85	3.3	90	3.7
Field Crops, other than Small Grains .....	471	18.7	462	17.9	474	19.3
Fruit and Vegetables .....	30	1.2	53	2.0	60	2.5
Miscellaneous Specialty .....	21	0.8	88	3.4	149	6.1
Livestock Combination .....	319	12.6	204	7.9	127	5.2
Field Crop Combination .....	77	3.0	48	1.8	..	..
Other Combination .....	52	2.1	44	1.7	69	2.8
Total .....	2,524	100.0	2,585	100.0	2,458	100.0

.. : not available

Source: Statistics Canada 1986 Census of Agriculture, Catalogue 96-104, Prince Edward Island.  
 Statistics Canada 1981 Census of Agriculture, Catalogue 96-903, Prince Edward Island.

**TABLE 44**  
**SELECTED 1986 CENSUS OF AGRICULTURE STATISTICS**  
**BY COUNTY IN PRINCE EDWARD ISLAND**

	Prince County	Kings County	Queens County	P.E.I. Total
Total Number of Farms . . . . .	992	520	1,321	2,833
Total Area of Farms (acres) . . . . .	256,201	140,817	276,178	673,196
Total Improved Land Area (acres) . . . . .	182,338	80,056	198,005	460,399
Type of Organization				
Individual or Family Farm . . . . .	769	416	1,093	2,278
Partnership . . . . .				
With written agreement . . . . .	56	26	92	174
Without written agreement . . . . .	80	37	80	197
Legally Constituted Company				
Family . . . . .	76	33	45	154
Other (1) . . . . .	5	8	6	19
Other Type (2) . . . . .	6	0	5	11
Total All Types . . . . .	992	520	1,321	2,833

1: A legally constituted company with most of the shares owned by some other person(s) or business.

2: Farms operated by institutions, community pastures, lands operated privately for an estate or trust company, Hutterite colonies and co-operative farms were included in "other" type of organization.

Source: Statistics Canada 1986 Census of Agriculture, Catalogue 96-104, Prince Edward Island.

**TABLE 45**  
**ESTIMATES OF PRIMARY FOREST PRODUCTION\***  
**PRINCE EDWARD ISLAND**  
**CUBIC METRES (000'S)**

	1985	1986	1987	1988	1989
Logs and Bolts (1) .....	85	114	86	91	112
Pulpwood .....	43	46	55	46	66
Other Round Wood .....	0	0	28	28	28
Total Industrial Wood .....	128	160	169	165	206
Fuelwood .....	287	316	310	310	310
Fuel Chips .....	0	0	17	29	29
<b>TOTAL PRODUCTION</b>	<b>415</b>	<b>476</b>	<b>496</b>	<b>504</b>	<b>545</b>

1. Includes some pulpwood.

Source: Statistics Canada Catalogue 25-202, Canadian Forestry Statistics (1985-1986).  
P.E.I. Department of Energy and Forestry, Forestry Division (1987-1989).

**TABLE 46**  
**FISH LANDINGS AND VALUE, P.E.I.**  
**(MILLIONS)**

Year	Groundfish		Pelagic & Estuarial		Lobster & Shellfish*		Irish Moss		Total	
	Weight Lbs.	Value \$	Weight Lbs.	Value \$	Weight Lbs.	Value \$	Weight Lbs.	Value \$	Weight Lbs.	Value \$
1982	42.3	4.8	18.1	2.5	18.7	26.4	34.0	1.7	113.1	35.4
1983	45.0	4.9	20.7	3.5	21.9	34.3	28.7	1.4	116.3	44.1
1984	41.6	4.5	15.6	3.3	21.6	28.3	34.7	1.7	113.5	37.8
1985	34.2	4.8	20.3	3.6	26.6	40.9	38.4	2.5	119.5	51.9
1986	30.1	5.6	33.9	4.8	31.4	55.0	27.8	1.8	123.2	67.2
1987	28.4	7.5	34.0	4.9	29.8	58.4	30.6	2.1	122.8	73.0
1988	30.4	4.6	29.2	4.3	33.9	66.7	33.1	2.6	126.6	78.3
1989 p	37.3	6.0	18.1	3.0	36.3	60.1	32.7	3.3	124.4	72.4

p: Preliminary

Note: Components may not total due to rounding.

\* Shellfish includes Snow Crab landings by New Brunswick vessels.  
P.E.I. total 2.9 million lbs. in 1986 and 1.28 million in 1987.

Source: P.E.I. Department of Fisheries and Aquaculture.

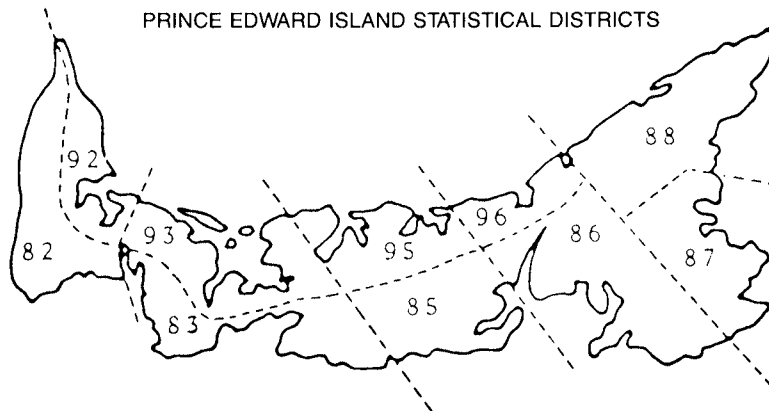


**TABLE 47**  
**P.E.I. LOBSTER LANDINGS STATISTICS COMPARISON**  
**(TOTAL POUNDS)**

Statistical Districts	1984	1985	1986	1987	1988	1989 p
88	3,110,242	3,004,750	3,783,160	4,016,549	5,103,172	4,714,639
87	2,718,605	3,145,782	5,314,338	5,455,378	6,226,926	5,873,165
96	322,383	304,333	391,446	401,677	710,609	480,595
86	337,605	431,109	643,493	653,827	651,707	594,805
95	937,890	791,427	978,204	1,008,997	1,115,903	1,029,253
85	59,969	181,333	265,190	267,211	333,170	255,211
93	785,143	835,950	868,964	967,595	1,670,027	1,372,046
83	758,610	1,849,182	1,577,310	1,345,072	1,048,363	973,285
92	2,210,636	1,819,800	2,113,058	2,101,634	1,879,421	2,508,383
82	2,394,223	2,654,715	2,392,470	2,649,572	3,255,835	3,450,902
Total Pounds	13,635,306	15,018,381	18,327,633	18,867,512	21,995,133	21,252,284
Dollar Value	23,137,881	33,591,000	44,494,234	49,532,000	56,128,893	46,058,302

p: preliminary

Source: P.E.I. Department of Fisheries and Aquaculture.



**TABLE 48**  
**AVERAGE PRICE RECEIVED BY P.E.I. FISHERMEN**  
**SELECTED YEARS AND SPECIES**  
**(CENTS PER POUND)**

<b>Year</b>	<b>Cod</b>	<b>Hake</b>	<b>Herring</b>	<b>Mackerel</b>	<b>Smelts</b>	<b>Lobster</b>	<b>Oysters</b>
1974	9.4	6.1	5.5	4.2	12.0	101.7	19.8
1975	9.8	7.4	7.3	5.2	9.1	94.7	23.3
1976	11.7	7.1	6.7	5.9	10.6	100.0	23.0
1977	14.6	8.9	7.6	6.8	10.8	110.2	24.5
1978	13.5	8.6	9.5	8.9	15.4	149.7	27.0
1979	17.9	9.7	11.5	10.6	17.7	152.7	33.2
1980	13.9	9.2	14.1	11.9	10.0	131.7	44.9
1981	16.1	10.0	10.4	11.6	10.0	155.9	53.1
1982	12.3	10.3	10.0	11.9	10.1	185.6	53.0
1983	12.5	6.0	10.0	12.0	15.0	188.0	53.0
1984	12.5	6.0	10.0	12.0	20.0	169.7	60.0
1985	14.0	8.0	10.0	12.0	60.0	223.6	60.0
1986	25.0	9.0	10.0	12.0	40.0	242.7	65.0
1987	30.0	30.0	11.0	12.0	45.0	262.5	75.0
1988	15.0	10.0	9.0	12.0	30.0	255.0	90.0
1989 p	20.0	12.0	7.0	12.0	45.0	217.0	90.0

p: preliminary

Source: P.E.I. Department of Fisheries and Aquaculture.

**TABLE 49**  
**TOTAL NUMBER OF TOURISTS VIA AUTO VEHICLES, P.E.I. (1)**  
**(MAY 15 - OCTOBER 31)**

	1983	1984	1985	1986	1987	1988	1989
Number of Tourist Parties .....	182,035	187,700	195,227	199,283	206,770	209,458	216,442

1. Tourist Auto Vehicle includes cars, vans, motor homes, vehicles with trailers but excludes pick-up trucks.

Source: P.E.I. Department of Tourism & Parks, Tourism Branch.

**TABLE 50**  
**AMOUNT EXPENDED BY NON-RESIDENT TOURISTS BY CATEGORY**  
**ALL MODES(1) (MAY 15 - OCTOBER 31)**  
**(MILLIONS \$)**

	1983	1984	1985	1986	1987	1988	1989
Gas and Oil .....	5.6	6.0	6.5	7.9	8.7	8.1	8.8
Auto Repairs & Maintenance ...	0.5	0.5	0.5	0.4	0.4	1.1	1.2
Food & Beverage (including alcohol) .....	4.0	4.3	4.6	5.5	6.0	6.0	6.6
Alcoholic Beverages .....	2.3	2.5	2.7	2.8	3.1	4.1	4.4
Restaurant Meal & Beverages ..	13.0	13.8	15.0	19.4	21.6	25.7	28.1
Accommodations .....	12.4	13.2	14.3	19.1	21.3	24.0	26.2
Recreation & Entertainment ....	4.4	4.7	5.1	7.7	8.5	7.3	8.0
Handcrafts .....	3.9	4.1	4.5	4.9	5.5	6.4	7.0
Other .....	4.6	5.1	5.4	6.4	7.2	7.3	8.0
Total .....	50.7	54.2	58.6	74.1	82.3	90.0	98.3

1. All Modes includes Auto, bus, motorcoach, air and cruise ships.

Source: P.E.I. Department of Tourism & Parks, Tourism Branch.

**TABLE 51**  
**P.E.I. TOURIST PARTIES BY MODE OF TRAVEL - 1989 SEASON**  
**(MAY 15 - OCTOBER 31)**

<b>Mode</b>	<b>Spring (May15-June11)</b>	<b>Summer (June12-Sept12)</b>	<b>Fall (Sept13-Oct.31)</b>	<b>Total 1988 Season</b>
Auto Parties . . . .	17,875	169,211	29,356	216,442
Percent . . . . .	7.2	67.7	11.8	86.7
Air Parties . . . . .	4,169	22,801	6,313	33,283
Percent . . . . .	1.7	9.1	2.5	13.3
Total Parties . . . .	22,044	192,012	35,669	249,725
Percent . . . . .	8.9	76.8	14.3	100.0

Source: P.E.I. Department of Tourism & Parks, Tourism Branch.

**TABLE 52**  
**P.E.I. TOURIST AUTO PARTIES BY ORIGIN**  
**(MAY 15 - OCTOBER 31, 1989)**

<b>Tourist Origin</b>	<b>Parties</b>	<b>Percent</b>
Newfoundland . . . . .	4,041	1.9
Nova Scotia . . . . .	74,450	34.4
New Brunswick . . . . .	52,705	24.3
Quebec . . . . .	20,283	9.4
Ontario . . . . .	32,281	14.9
Other Canada . . . . .	2,340	1.1
New England States . . . . .	16,411	7.6
Mid-Atlantic States . . . . .	6,684	3.1
Other States . . . . .	7,247	3.3
Total . . . . .	216,442	100.0

Source: P.E.I. Department of Tourism & Parks, Tourism Branch.

**TABLE 53**  
**PRINCE EDWARD ISLAND RESTAURANT, CATERER AND TAVERN RECEIPTS**  
**BY KIND OF BUSINESS (\$'000)**

<b>Year</b>	<b>Restaurants Licensed</b>	<b>Restaurants Unlicensed</b>	<b>Take-Outs</b>	<b>Caterers</b>	<b>Taverns</b>	<b>Total</b>
1985	17,367.9	15,461.7	9,413.3	1,441.2	2,357.0	46,043.7
1986	18,620.8	16,894.8	9,263.9	1,742.8	2,162.9	48,687.2
1987	22,010.8	18,746.0	9,248.3	2,389.0	3,150.6	55,547.9
1988	23,612.4	18,400.5	10,419.8	2,224.5	4,882.6	59,542.2
1989 p	25,957.3	19,124.3	11,176.4	2,569.3	5,786.6	64,616.5
<b>1989 Monthly</b>						
January . . . . .	1,412.0	1,146.5	611.3	223.8	334.1	3,728.0
February . . . . .	1,230.0	1,051.9	543.1	225.5	344.6	3,395.3
March . . . . .	1,414.9	1,326.6	794.1	196.8	409.7	4,142.3
April . . . . .	1,356.5	1,357.0	773.1	184.8	435.3	4,107.0
May . . . . .	1,758.4	1,605.2	946.0	221.2	456.9	4,987.9
June . . . . .	2,288.7	1,782.0	1,092.8	204.9	527.0	5,895.6
July . . . . .	4,292.4	2,207.8	1,436.4	239.4	649.1	8,825.4
August . . . . .	4,335.5	2,138.9	1,365.1	207.9	708.8	8,756.4
September . . . . .	2,755.3	1,745.9	1,009.4	152.1	504.5	6,167.3
October . . . . .	1,782.9	1,585.0	899.7	246.4	462.8	4,976.9
November . . . . .	1,600.5	1,496.0	841.5	237.8	434.5	4,610.5
December . . . . .	1,730.2	1,681.5	863.9	228.7	519.3	5,023.9

p: preliminary

Note: Totals may not equal the sum of components due to rounding.

Source: Statistics Canada Catalogue 63-011, Restaurants, Caterer and Tavern Statistics.

**TABLE 54**  
**NUMBER OF LOCATIONS AND TOTAL RECEIPTS**  
**FROM MAJOR ACCOMODATION GROUPS, P.E.I.**

Year	Hotels		Motels		(2) Tourist Courts and Cabins		(3) Tent and Trailer Campgrounds		Total	
	No.	\$'000	No.	\$'000	No.	\$'000	No.	\$'000	No.	\$'000
1980	22	9,931	60	5,043	72	1,137	57	2,094	211	18,205
1981	25	11,077	55	6,209	75	1,216	51	2,251	206	20,753
1982	25	12,864	56	5,600	74	1,363	48	2,328	203	22,115
1983	24	14,568	54	5,778	72	1,501	47	2,229	197	24,076

Year	Hotels, Motels, & Motor Hotels		Tourist Courts and Cabins		Tent and Trailer Campgrounds		Total		
	No.	\$'000	No.	\$'000	No.	\$'000	No.	\$'000	
1984		75	19,000	69	2,300	29	1,600	173	22,900
1985		121	28,300	22	1,200	10	1,000	153	30,500
1986		124	31,100	25	1,500	35	1,700	184	34,300

Note (1): Data for hotels and motels have been aggregated due to classification changes which made the separate estimates unreliable between 1984 and 1985.

Note (2): Tourist Courts and Cabins also include: Outfitters, Recreation and Vacation Camps.

Note (3): Tent and Trailer Campgrounds also include: Guest Houses, Tourist Homes, Lodging Houses and Residential Clubs.

Source: Statistics Canada Catalogue 63-204, Traveller Accommodation Statistics.

**TABLE 55**  
**SOURCES OF RECEIPTS FOR ALL TYPES OF**  
**ACCOMODATION GROUPS, P.E.I. (\$'000)**

Year	Rooms	Meals	Beer, Wine and Liquor	Merchandise Sales	All Other	Total
1981	12,510	4,227	2,195	903	412	20,753
1982	12,966	4,472	2,968	968	275	22,155
1983	14,468	4,429	3,110	900	646	23,553
1984	14,393	4,809	x	x	413	23,488

Note: Data prior to 1980 are not shown as they are not comparable. Because no breakdown of receipts by source was available for Outfitters and Provincial and Federal campgrounds, components will not add to totals.

Note: 1985 data not available at time of publication.

Source: Statistics Canada Catalogue 63-204, Traveller Accommodation Statistics.

**TABLE 56**  
**PRINCIPAL STATISTICS OF P.E.I. MANUFACTURING INDUSTRIES**  
**MANUFACTURING ACTIVITY (1)**

Year	Production & Related Workers					Cost of Fuel & Electricity (\$'000)	Cost of Materials & Supplies (\$'000)	Value of Shipments of Goods of Own Manufacture (\$'000)	Value Added (\$'000)
	Establishments	Male	Female	Hours Paid ('000)	Wages (\$'000)				
1982	127	1,488	738	4,560	30,552	9,078	169,569	255,173	75,559
1983	140	1,553	848	5,030	35,615	10,273	185,767	285,176	93,148
1984	146	1,480	860	4,876	35,327	10,759	188,943	289,048	87,158
1985	141	1,598	1,096	5,594	41,362	11,717	192,923	296,874	94,042
1986	141	1,508	1,110	5,210	39,211	8,652	208,867	325,798	107,008

1. These statistics refer to production activity of manufacturing establishments.

**TOTAL ACTIVITY (2)**

Year	Working Owners & Partners	Administrative Office And Other Non-Manufacturing Employees			Total Employees		Cost of Materials Supplies & Goods for Resale (\$'000)	Value of Shipments & Other Revenues (\$'000)	Value Added (\$'000)
		Male	Female	Salaries (\$'000)	Number	Salaries & Wages (\$'000)			
1982	26	418	201	12,337	2,872	42,889	205,438	293,200	78,144
1983	37	458	202	14,054	3,061	49,669	227,188	330,835	97,386
1984	40	410	213	14,350	2,963	49,677	232,580	344,169	98,643
1985	..	451	243	16,118	3,388	57,480	239,884	354,122	104,328
1986	..	496	304	18,809	3,418	58,020	261,193	387,656	116,540

2. These statistics refer to total activity of manufacturing firms and therefore include non-manufacturing activities of manufacturing establishments and activities of separate head offices, sales offices and auxiliary units.

3. Statistics are based on the 1980 Standard Industrial Classification.

.. : nil

Source: Statistics Canada Catalogue 31-203, Manufacturing Industries of Canada, National and Provincial Areas.

**TABLE 57**  
**VALUE ADDED IN MANUFACTURING ACTIVITY**  
**BY MAJOR GROUPS AND INDUSTRY**  
**PRINCE EDWARD ISLAND 1982-1986 (\$'000)**

	<b>1982</b>	<b>1983</b>	<b>1984</b>	<b>1985</b>	<b>1986</b>
Fish Products Industry.....	12,903	16,529	17,741	16,277	24,177
Dairy Products Industry.....	12,891	12,613	12,362	x	x
Other Food and Beverage Industry.....	x	30,760	17,676	x	35,543
Total Food and Beverage Industry.....	x	59,902	47,779	49,777	58,720
Wood Industries.....	1,713	3,211	3,384	3,299	3,889
Furniture & Fixtures Industry.....	x	x	x	x	x
Printing, Publishing & Allied Industries....	x	8,315	x	10,486	x
Machinery Industries.....	x	x	x	x	x
Non-Metallic Mineral Products Industries..	x	x	x	x	1,460
Miscellaneous Manufacturing Industries....	x	2,382	3,248	4,456	4,771
Total All Industries.....	75,152	93,148	87,158	94,042	107,008

x: confidential

Note: Bakeries have been removed from the manufacturing category and shifted to the services category. 1983 figures conform to this change and 1982 figures have been revised to reflect the change. Figures prior to 1982 do not compare with the data after this reorganization.

Source: Statistics Canada Catalogue 31-203, Manufacturing Industries of Canada, National and Provincial Areas.



**TABLE 58**  
**ESTIMATED VALUE OF SHIPMENTS IN ALL MANUFACTURING INDUSTRIES**  
**PROVINCE OF ORIGIN - P.E.I. (\$'000)**

	1986	1987	1988	1989
January.....	20,287	23,476	22,217	24,214
February.....	20,179	20,437	22,128	23,685
March.....	21,854	22,697	26,091	24,890
April.....	22,738	24,763	25,913	26,325
May.....	36,578	37,050	38,748	42,915
June.....	30,680	40,267	43,277	38,528
July.....	29,155	34,625	33,568	31,949
August.....	28,425	31,523	29,632	31,725
September.....	34,674	28,749	30,876	31,740
October.....	27,371	29,041	32,258	34,412
November.....	26,534	26,374	26,945	28,912
December.....	<u>26,841</u>	<u>23,860</u>	<u>25,800</u>	<u>26,756</u>
Total.....	325,316	342,862	357,453	366,051

Source: Statistics Canada Catalogue 31-001, Inventories Shipments and Orders in Manufacturing Industries.

**TABLE 59**  
**PRINCE EDWARD ISLAND ELECTRICITY STATISTICS**  
**CAPABILITY AND PEAK LOAD (M.W.)**

	1984	1985	1986	1987	1988	1989
Gross Capability . . . . .	114	110	115	115	115	115
Firm Power Peak Load within Province . . . . .	103	93	95	105	113	115
Indicated Reserve . . . . .	31	37	40	35	27	35
Indicated Reserve as a Percentage of Firm Peak Power Load . . . . .	30.1	39.8	42.1	33.3	23.9	30.4

Note: 1989 forecast.

Source: Statistics Canada Catalogue 57-204, Electric Power Statistics.

**TWELVE MONTH AVERAGE OF ELECTRICITY REQUIREMENTS (MWH)**

	1984	1985	1986	1987	1988	1989
Total Supply . . . . .	45,108	48,018	51,798	53,918	58,664	60,564
Total Received from Other Provinces . . . . .	44,940	47,890	50,809	49,221	51,626	51,863
Net Generation on P.E.I. . . . .	168	128	989	4,697	7,061	8,701
Deliveries to Other Provinces . . . . .	0	0	0	0	23	0

Source: Statistics Canada Catalogue 57-001, Electric Power Statistics.

**TWELVE MONTH AVERAGE OF DOMESTIC COST OF 500 KWH  
OF ELECTRICITY (\$ PER MONTH)**

	1984	1985	1986	1987	1988	1989
Charlottetown: Maritime Electric Co. Ltd. . . . .	60.86	59.39	46.83	45.41	50.20	48.42

Source: P.E.I. Department of Energy and Forestry, Energy Branch.

MW = Megawatt, MWH (Megawatt hour) = Watt hour x 10<sup>6</sup>, KWH (Kilowatt hour) = Watt hour x 10<sup>3</sup>.

**TABLE 60**  
**SALES OF REFINED PETROLEUM PRODUCTS**  
**PRINCE EDWARD ISLAND, 1983 - 1989**  
**(CUBIC METERS)**

	1983	1984	1985	1986	1987	1988	1989
Motor Gasoline . . . .	168,759	169,196	165,361	167,295	170,837	180,062	182,214
Diesel . . . . .	49,929	56,319	48,042	48,454	51,078	56,084	71,883
Light Fuel Oil . . . . .	105,084	118,669	122,615	129,528	137,354	151,138	164,182
Heavy Fuel Oil . . . .	16,869	8,932	8,695	9,672	29,560	41,344	41,909
Other . . . . .	35,358	39,045	35,392	50,395	62,138	57,434	37,987
Total . . . . .	375,999	392,161	380,105	405,344	450,967	486,062	498,125

Source: Statistics Canada Catalogue 45-004, Refined Petroleum Products.

**TABLE 61**  
**SCHEDULE OF GASOLINE SALES IN P.E.I FOR THE**  
**FISCAL YEAR ENDED MARCH 31**  
**(CUBIC METERS)**

Fiscal Year	Taxed	Tax Exempt Gasoline			
	Gasoline (net)	Farmers	Fishermen	Other	Total
1983	161,750	2,079	5,849	1,709	9,637
1984	161,347	1,750	5,545	1,527	8,822
1985	161,561	1,616	4,735	1,520	7,871
1986	160,369	1,423	4,416	1,376	7,215
1987	166,692	1,263	3,745	1,248	6,256
1988	168,815	1,124	3,089	772	4,985
1989	175,145	1,217	2,349	1,323	4,889

One Cubic Meter = 1,000 Litres

Source: P.E.I. Department of Finance, Revenue Division.

**TABLE 62**  
**TRANSPORTATION STATISTICS, P.E.I.**  
**BORDEN, P.E.I. - CAPE TORMENTINE, N.B. FERRY SERVICE**

Year	Autos	Trailers & Campers	Trucks	Tractor Trailers	Buses	Total Vehicles	Rail Cars	Passengers
1982	442,716	30,417	70,144	66,668	3,103	622,381	12,128	1,451,915
1983	478,292	29,423	73,807	75,095	3,251	670,330	11,424	1,565,603
1984	483,004	30,519	74,309	82,727	3,178	673,737	10,609	1,583,298
1985	494,697	30,514	76,604	90,346	2,816	695,977	8,714	1,614,950
1986	513,665	30,400	81,474	92,485	4,007	722,031	5,681	1,661,873
1987	524,416	31,581	87,292	104,979	4,725	752,993	2,968	1,713,110
1988	549,640	31,985	93,768	114,030	5,052	794,475	1,001	1,777,292
1989	578,854	32,314	88,149	128,141	4,887	832,345	701	1,847,319

**WOOD ISLANDS, P.E.I. - CARIBOU, N.S. FERRY SERVICE**

Date	Passengers	Autos	Trucks, Recreation Vehicles and Buses
April 23 - Dec. 20/82	526,300	149,037	49,512
May 22 - Dec. 20/83	496,400	141,346	46,380
May 03 - Dec. 20/84	525,026	150,355	52,730
April 26 - Dec. 09/85	527,108	153,294	52,062
April 29 - Dec. 10/86	530,095	156,350	50,539
May 07 - Dec. 20/87	538,591	155,623	54,707
April 26 - Dec. 12/88	551,555	162,989	56,265
April 24 - Dec. 06/89	548,563	163,253	54,314

**SOURIS, P.E.I. - GRINDSTONE, MAGDALEN ISLANDS FERRY SERVICE**

Year	No. of Voyages	Passengers	Autos	Buses, Vans & Trucks	Motor Homes & Trailers	Motorcycle & Bicycles	Heavy Machinery
1982	275	45,527	11,165	4,219	696	2,035	52
1983	272	43,612	12,125	4,088	(1)	1,879	63
1984	271	40,357	10,095	4,127	1,671	1,547	37
1985	281	45,442	11,728	4,103	1,881	1,667	24
1986	284	52,040	13,727	3,856	2,089	1,487	18
1987	277	53,207	15,464	3,228	804	1,487	29
1988	274	53,730	14,786	3,289	2,316	1,426	19
1989	288	59,712	16,401	3,143	2,689	1,593	21

1. Number of trailers is included in the number of trucks.

Source: P.E.I. Department of Transportation and Public Works.

**TABLE 63**  
**RAIL FREIGHT - CARLOADS**  
**PRINCE EDWARD ISLAND, 1982 - 1988**

Year	Inward	Outward	Total
1982	3,008	3,152	6,160
1983	3,176	2,738	5,914
1984	3,251	2,165	5,416
1985	2,736	1,708	4,444
1986	2,573	412	2,985
1987	1,446	150	1,596
1988	589	412	1,001
1989	344	357	701
% Change 1988/89	-41.6	-13.3	-30.0

Source: P.E.I. Department of Transportation and Public Works.

**TABLE 64**  
**INTER-PROVINCIAL BUS SERVICE - ISLAND TRANSIT CO-OPERATIVE LTD.**  
**1987 - 1989**

	Number of Passengers		
	1987	1988	1989
Charlottetown - Souris (May - Oct.) . . . . .	922	814	828
Charlottetown - Tignish (Jan. - Dec.) . . . . .	8,656	7,600	6,819
Charlottetown - New Glasgow (Summer Service May - Oct.) . . . . .	3,248	3,295	3,003
TOTAL . . . . .	12,826	11,709	10,650

Source: P.E.I. Department of Transportation and Public Works.

**TABLE 65**  
**AIR PASSENGERS TO AND FROM PRINCE EDWARD ISLAND**  
**1985 - 1989**

Year	To P.E.I.		From P.E.I.		Total	
	Canadian Airlines	Air Canada	Canadian Airlines	Air Canada	Canadian Airlines	Air Canada
1985	45,500	29,242	47,000	33,390	92,500	62,632
1986	na	27,751	na	31,531	161,605	59,282
1987	42,722	49,217	43,988	50,370	86,710	99,587
1988	48,138	60,856	47,170	59,359	95,308	120,215
1989	212,492		107,507		212,492	

Note: Canadian Airlines took over EPA in 1986. Detail data for Canadian Airlines in 1986 is not available.

Note: Only totals are available for 1989.

Source: P.E.I. Department of Transportation and Public Works.

**TABLE 66**  
**PRINCE EDWARD ISLAND MOTOR VEHICLE REGISTRATIONS**  
**1981 - 1988**

Year	Cars	Trucks *	Trailers	Other	Total
1981	48,564	14,969	7,073	5,376	75,982
1982	48,177	14,962	6,852	5,521	75,512
1983	50,521	15,629	6,778	5,727	78,655
1984	52,538	16,499	5,529	5,705	80,271
1985	54,533	17,131	1,310	5,600	78,574
1986	56,224	18,045	1,085	5,547	80,901
1987	60,169	19,589	1,334	3,034	84,126
1988	61,983	20,321	1,804	2,774	86,882

\* The 1983, 84, 85, 86 and 87 figures for Trucks includes 462, 549, 582, 579 and 430 trucks respectively under the Pro-rated Program.

Note: Other includes buses, motorcycles, farm trucks, snowmobiles and all other vehicles.

Note: 1989 data not available at time of publication.

Source: Highway Safety Division, Department of Transportation & Public Works.

**TABLE 67**  
**PRINCE EDWARD ISLAND SCHOOL ENROLMENT**

<b>School Year</b>	<b>Elementary (1-6)</b>	<b>Secondary (7-12)</b>	<b>Child Development</b>	<b>Total</b>
1982-83	12,440	12,923	233	25,596
1983-84	12,265	12,840	251	25,356
1984-85	12,193	12,562	293	25,048
1985-86	12,120	12,434	324	24,878
1986-87	12,097	12,328	348	24,773
1987-88	12,037	12,297	304	24,638
1988-89	12,159	12,241	308	24,708
1989-90	12,270	12,202	272	24,744

Note: Enrolment figures are for public schools including vocational high schools and private schools.

Source: P.E.I. Department of Education.

**TABLE 68**  
**POST SECONDARY ENROLMENTS**  
**PRINCE EDWARD ISLAND**

School Year (1)	University of Prince Edward Island			Holland College
	Full-Time	Part-Time	Summer	
1981-82	1,390	763	920	761
1982-83	1,596	663	1,027	802
1983-84	1,676	710	1,144	810
1984-85	1,720	689	1,070	837
1985-86	1,768	781	1,184	825
1986-87 (2)	1,837	685	1,090	881
1987-88 (2)	2,029	753	1,239	785
1988-89 (2)	2,181	813	1,291	918
1989-90 (2)	2,332	849	1,321	912

1. The University of Prince Edward Island school year runs from May of the first year to April the following year, including two summer sessions. Full-time and part-time figures for U.P.E.I. are recorded as of December 1 of each school year. Holland College school year runs from September to June with the exception of some programs that continue through the summer. Holland College figures are recorded as of December 1 each year and are obtained from the MPHEC Census.
2. The number of full-time students at U.P.E.I. include the enrollment of students in the Faculty of Veterinary Medicine. 1986-87: includes 52 students in the Faculty of Veterinary Medicine. 1987-88: includes 98 students in the Faculty of Veterinary Medicine and 10 students in the MSc program. 1988-89: includes 142 students in the Faculty of Veterinary Medicine and 16 students in the MSc program. 1989-90: includes 184 students in the Faculty of Veterinary Medicine and 22 students in the MSc program.

Source: Registrar's Office, University of Prince Edward Island and Holland College.



**TABLE 81**

**PRINCE EDWARD ISLAND PROVINCIAL GOVERNMENT EMPLOYMENT**

<b>Year</b>	<b>Classified Employees</b>	<b>Unclassified Employees</b>	<b>Total Employees</b>
1983	2,266	1,255	3,521
1984	2,927	697	3,624
1985	2,964	789	3,753
1986	2,994	864	3,858
1987	3,044	963	4,007
1988	3,139	1,243	4,302
1989	3,256	1,110	4,366

<b>1989</b>	<b>Full Time</b>	<b>Part Time</b>	<b>Full Time</b>	<b>Part Time</b>	<b>Full Time</b>	<b>Part Time</b>
Agriculture .....	119	20	55	4	174	24
Community & Cultural Affairs .....	81	12	16	0	97	12
Education .....	72	27	26	17	98	44
Energy and Forestry .....	53	1	37	0	90	1
Environment .....	41	0	21	0	62	0
Finance .....	155	0	28	1	183	1
Fisheries .....	16	0	11	0	27	0
Health and Social Services .....	1,010	419	244	63	1,254	482
Industry .....	35	0	3	0	38	0
Justice and Attorney General .....	240	39	49	3	289	42
Labour .....	32	0	7	0	39	0
Tourism & Parks .....	47	2	26	1	73	3
Transportation & Public Works .....	449	56	371	0	820	56
Addiction Services .....	4	0	5	0	9	0
Auditor General Office .....	15	2	1	0	16	2
Civil Service Commission .....	28	1	10	0	38	1
Energy Corporation .....	2	1	11	0	13	1
Executive Council .....	18	3	2	1	20	4
Hospital & Health Services Comm. ....	29	0	19	0	48	0
Housing Corporation .....	38	2	3	0	41	2
Land Development Corporation .....	11	2	2	0	13	2
Land Use Commission .....	2	0	0	0	2	0
Legislative Assembly .....	9	0	0	0	9	0
Lending Authority .....	18	0	0	0	18	0
Liquor Control Commission .....	107	0	39	0	146	0
Public Utilities Commission .....	10	0	0	0	10	0
Treasury Board .....	13	0	1	0	14	0
Workers' Compensation .....	14	0	0	0	14	0
P.E.I. Development Agency .....	1	0	33	0	34	0
<b>TOTAL .....</b>	<b>2,669</b>	<b>587</b>	<b>1,020</b>	<b>90</b>	<b>3,689</b>	<b>677</b>

Note: Figures now include employees of P.E.I. Development Agency (this agency was formed when the Market Development Centre and Industrial Enterprises Incorporated were merged). The Milk Commission is now under the Agriculture heading.

Note: Figures are recorded as of December each year.

Source: Civil Service Commission and P.E.I. Development Agency.

**TABLE 82**  
**PROVINCIAL GOVERNMENT EMPLOYMENT AND PAYROLL IN P.E.I.**

Year	General Government		Provincial Government Enterprise	
	Total Payroll (\$'000)	Average Number of Employees	Total Payroll (\$'000)	Average Number of Employees
1983	84,696	4,473	5,710	294
1984	88,037	4,555	4,927	239
1985	92,254	4,556	6,107	276
1986	98,243	4,687	6,612	289
1987	105,007	4,827	5,623	264
1988	113,842	4,894	5,954	277
1988				
Jan.- March	29,944	4,535	1,597	246
Apr.- June	23,416	4,595	1,342	254
July - Sept.	30,955	5,736	1,557	316
Oct.- Dec.	29,527	4,710	1,458	292
1989				
Jan.- March	26,685	4,653	1,516	271
Apr.- June	25,945	4,709	1,549	271
July - Sept.	na	na	na	na
Oct.- Dec.	na	na	na	na

na: not available.

Source: Statistics Canada Catalogue 72-007, Provincial & Territorial Government Employment, and Cansim Main Base.

**TABLE 83**  
**FEDERAL GOVERNMENT EMPLOYMENT AND PAYROLL IN P.E.I.**

Year	General Government		Federal Government Enterprise	
	Total Payroll (\$'000)	Average Number of Employees	Total Payroll (\$'000)	Average Number of Employees
1983	75,771	2,976	23,944	1,007
1984	88,929	3,300	25,072	992
1985	96,801	3,512	25,087	963
1986	100,595	3,466	24,504	926
1987	103,944	3,406	27,730	986
1988	106,354	3,395	26,618	933
1989	111,875	3,376	27,731	925
1988				
Jan.- March	24,537	3,311	6,324	923
Apr.- June	28,080	3,407	7,000	936
July - Sept.	28,479	3,534	6,772	965
Oct.- Dec.	25,258	3,328	6,522	906
1989				
Jan.- March	28,109	3,373	7,212	913
Apr.- June	26,283	3,393	6,509	941
July - Sept.	30,441	3,469	7,454	942
Oct.- Dec.	27,042	3,268	6,556	902

Source: Statistics Canada Catalogue 72-004, Federal Government Employment and Cansim Mini Base.