



PROVINCE OF PRINCE EDWARD ISLAND

Seventeenth Annual
STATISTICAL REVIEW
1990

MARCH 1991



PROVINCE OF PRINCE EDWARD ISLAND

Seventeenth Annual

STATISTICAL REVIEW

1990

*Returned from Printer on
July 3rd, 1991*

Prepared by:

Economics, Statistics and Fiscal Analysis Division

Department of Finance

March, 1991

FOREWORD

The Prince Edward Island Annual Statistical Review presents a comprehensive review of socio-economic information for Prince Edward Island. The statistical tables provide historical and current data at the provincial level and in some cases at sub-provincial levels. The Annual Statistical Review satisfies an ever increasing need for a quick and reliable source of statistics on Prince Edward Island. The review serves as an indispensable source of information to assist in the analysis of the Prince Edward Island economy and its people. The publication contains a brief narrative analysis of the economic performance of the Province over the past year and a short description of the Province entitled 'Facts about Prince Edward Island'.

The statistics presented in this review are compiled by the Economics, Statistics and Fiscal Analysis Division and are obtained from a variety of sources including Statistics Canada, provincial government departments and the Conference Board of Canada. If you have any suggestions, comments or statistical inquiries, the Division's staff are always ready to assist you.



GILBERT R. CLEMENTS,
Minister of Finance

FACTS ABOUT PRINCE EDWARD ISLAND

Population - (June 3, 1986)	126,646
Urban Population	48,289
Rural Population	78,357
Farm Population	10,275
Non-Farm Population	68,085
Land Area - (Square Kilometers)	5,660.38
Population density- (per sq. kilometer).....	22.4
Total Area of Farms - 673,196 acres (272,432 hectares) (48.1% of total land area).	

MOTTO	Parva sub ingenti (the small under the protection of the great)
FLOWER	Lady's Slipper (designated in 1947)
PROVINCIAL BIRD	Blue Jay
DESIGNATED TREE	Red Oak
CAPITAL	City of Charlottetown (Population 15,776, June 3, 1986)

COUNTIES AND THEIR POPULATION (June 3, 1986)

KINGS	19,509
QUEENS	63,460
PRINCE	43,677

MEMBERS OF THE

LEGISLATIVE ASSEMBLY

32 (30 Liberals, 2 Progressive Conservatives)

MEMBERS OF PARLIAMENT

4

SENATORS

4

Prince Edward Island entered Confederation in 1873

TRANSPORTATION

- Airlines

Air Canada, Canadian International Airlines, Air Atlantic and Air Nova

- Ferries

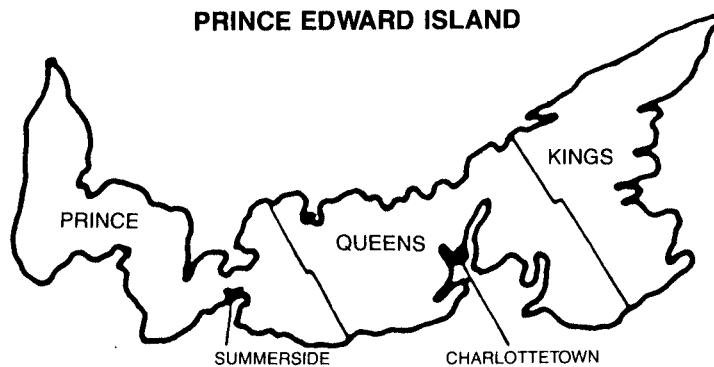
Borden, P.E.I. to Cape Tormentine, N.B.;
Wood Islands, P.E.I. to Caribou, N.S.;
Souris, P.E.I. to Grindstone, Magdalen Islands.

NEWS MEDIA

- Television Systems Canadian Broadcasting Corporation CBC and Atlantic Television (ATV)
- Three A.M. Radio Stations CFCY, Charlottetown; CHTN, Charlottetown; and CJRW, Summerside
- Three F.M. Radio Stations CBCT F.M. (96), Q93 F.M., and CBAF F.M.
- Three Daily Newspapers The Guardian, The Evening Patriot, and the Journal Pioneer
- Three Weekly Newspapers The Eastern Graphic, The West Prince Graphic and LaVoix Acadienne
- One Bi-Weekly Newspaper The Island Farmer

TEMPERATURE (Degrees Celsius, taken from measurements recorded during 1951-1980)

Summer (July and August)	Average Temperature	18.3
	Absolute Maximum	34.6
	Absolute Minimum	3.9
Winter (January and February)	Average Temperature	-7.1
	Absolute Maximum	12.2
	Absolute Minimum	-28.9
Average Yearly Snowfall	304 cm (taken from measurements recorded during 1951-1980)	



PREFACE AND ACKNOWLEDGEMENTS

The statistics included in this publication have been obtained from several sources, including Statistics Canada, Provincial Government Departments, and other institutions and agencies.

Thanks to Statistics Canada, to all provincial departments and others who supplied data, to Janice MacDonald for putting the report together, Roy Spence for preparing the Economic Review and Ada Lowther for help in preparation of the Review.

Appreciation is also extended to Baxter Ramsay of Audio Visual and Phyllis Burhoe from the Office of the Queen's Printer for their valuable assistance in the production of this publication.

John Palmer,
Director

TABLE OF CONTENTS

I. Facts About Prince Edward Island	iv
II. Prince Edward Island Economic Review 1990	1

TABLES

III. Population Vital Statistics and Labour Force

1. Population and Vital Statistics, Prince Edward Island	11
2. In-Migration to Prince Edward Island by Province of Origin	12
3. Out-Migration from Prince Edward Island by Province of Destination	13
4. Components of International and Interprovincial Migration, Prince Edward Island 1967-68 to 1989-90	14
5. Population by Sex and Age Group, Prince Edward Island	15
6. Population of Cities, Towns, Villages and Indian Reserves in Prince Edward Island 1981 & 1986	16
7. 1986 Census Data on Population, Dwellings, Households and Families ..	17
8. Prince Edward Island Working Age Population, Labour Force, Employment and Unemployment, Annual Averages 1980-1990, Employment and Unemployment, by Sex, Annual Averages 1986-1990 ..	18
9. Estimates of Employees by Industry, Prince Edward Island, 1984-1990 ..	19
10. Average Weekly Wages and Salaries, Total Wages and Salaries for Prince Edward Island	20
11. Unemployment Insurance Statistics Prince Edward Island, 1977-1990 ..	21

IV. General Economic Indicators

12. Personal Income, Prince Edward Island 1985-1989	22
13. Government Transfer Payments to Persons, Prince Edward Island 1985-1989	23
14. Gross Provincial Expenditures, Prince Edward Island, 1985-1989	24
15. Provincial Gross Domestic Product, by Component, Prince Edward Island 1985-1989	25
16. Performance of Gross Domestic Product, Prince Edward Island Relative to Canada	26
17. Provincial Gross Domestic Product at Factor Cost for Selected Industries, Prince Edward Island 1982-1986	27

18.	Gross Domestic Product by Industry, Prince Edward Island (Constant \$, 1986) 1985-1990	28
19.	Public and Private Investment by Type and by Industry, Prince Edward Island 1985-1990	29
20.	All Items Consumer Price Index, Charlottetown - Summerside 1986 = 100	30
21.	All Items Consumer Price Index, Canada, 1986 = 100	31
22.	Consumer Price Index, Charlottetown - Summerside, Annual Averages of Major Components, 1986 = 100	32
23.	Consumer Price Index, Canada, Annual Averages of Major Components, 1986 = 100	33
24.	Canadian Industrial Product Price Indexes for Selected Commodities 1986-1990 and by Month 1990	34
25.	Value of Retail Trade, Prince Edward Island	35
26.	New Motor Vehicle Sales, Prince Edward Island 1982-1990	36
27.	International Exports from Prince Edward Island by Principal Trading Areas and by Major Commodities	37
28.	Personal Income Tax Returns, Prince Edward Island, Income & Taxes Paid, 1984-1988, All returns by Counties and Selected Localities, 1988	38
29.	Personal Income Tax Returns, 1988 Taxation Year, All Returns by Income, Prince Edward Island	39
30.	Personal Income Tax Returns, 1988, All Returns by Occupation for Prince Edward Island	40

V. Sectoral Development

A. Economic Statistics

31.	Value of Building Permits by Type, Prince Edward Island, 1984-1990	41
32.	Number of Building Permits by Type of Dwelling, Prince Edward Island, 1984-1990	41
33.	Number of Building Permits by County, Prince Edward Island	42
34.	Housing Starts, Completions and Under Construction by Year and Quarter for Prince Edward Island, 1986-1990	43
35.	Housing Starts by Type of Unit, Prince Edward Island, 1975-1990	44
36.	Farm Cash Receipts, Prince Edward Island, 1985-1990	45
37.	Income of Farm Operators from Farming Operations, Prince Edward Island, 1981-1989	46

38.	Capital Value of All Farms in Prince Edward Island, 1983-1989	47
39.	Index of Farm Production, Prince Edward Island	47
40.	Farm Product Price Index Prince Edward Island, 1986 = 100.	48
41.	Comparison of Selected Census Farm Data, Prince Edward Island, 1976, 1981 & 1986.	49
42.	Census Farm Data, Classified by Sales Class, Prince Edward Island, 1976, 1981 & 1986.	50
43.	Farms with Sales of \$2,500 or More, Classified by Type of Product, Prince Edward Island 1976, 1981 & 1986	51
44.	Selected 1986 Census of Agriculture Statistics by County, Prince Edward Island	52
45.	Estimates of Primary Forest Production, Prince Edward Island	53
46.	Fish Landings and Value, Prince Edward Island	53
47.	Prince Edward Island Lobster Landings Statistics Comparisons, Total Pounds	54
48.	Average Price Received by Prince Edward Island Fishermen, Selected Years and Species.	55
49.	Total Number of Tourists via Auto Vehicles, Prince Edward Island (May 15th - October 31st), 1984-1990	56
50.	Amount Expended by Non-Resident Tourists by Category All Modes (May 15th - October 31st) 1984-1990	56
51.	Tourist Parties by Mode of Travel, 1990 Season Prince Edward Island (May 15th - October 31st)	57
52.	Prince Edward Island Tourist Auto Parties by Origin (May 15th - October 31st), 1990.	57
53.	Prince Edward Island Restaurant, Caterer and Tavern Receipts by Kind of Business for 1985-1990 and by Month 1990	58
54.	Number of Locations and Total Receipts from Major Accommodation Groups, Prince Edward Island	59
55.	Sources of Receipts for All Types of Accommodation Groups, Prince Edward Island	59
56.	Principal Statistics of Prince Edward Island Manufacturing Industries	60
57.	Valued Added by Major Groups and Industry, Prince Edward Island 1983-1987	61
58.	Estimated Value of Shipments in All Manufacturing Industries Province of Origin-Prince Edward Island	62
59.	Prince Edward Island Electricity Statistics	63
60.	Sales of Refined Petroleum Products, Prince Edward Island 1984-1990.	64

61.	Schedule of Gasoline Sales in Prince Edward Island for the Fiscal Year Ended March 31st (Taxed and Tax Exempt Gasoline)	64
62.	Transportation Statistics, Prince Edward Island - Ferry Service	65
63.	Rail Freight-Carloads, Prince Edward Island 1982-1989	66
64.	Interprovincial Bus Service - Island Transit Co-operative Ltd., Prince Edward Island 1988-1990	66
65.	Air Passengers to and from Prince Edward Island 1986-1990	67
66.	Prince Edward Island Motor Vehicle Registrations 1981-1990	67

B. Social Statistics

67.	Prince Edward Island School Enrolment	68
68.	Post-Secondary Enrolments, Prince Edward Island	69
69.	Holland College Enrolments 1985/86-1989/90	70
70.	Prince Edward Island Educational Expenditures	71
71.	Prince Edward Island Health and Hospital Care Statistics	71
72.	Active Treatment Hospitals, Prince Edward Island	72
73.	Physicians Services, Prince Edward Island	72
74.	Crime Statistics, Prince Edward Island	73
75.	Persons Held in Prince Edward Island Jails	74
76.	Persons Held in Prince Edward Island Youth Facilities, Total Days by Custody and Youth Facility	75
77.	Entries Under the Supreme Court of Prince Edward Island Fiscal Year Ended March 31st	76

C. Government

78.	Province of Prince Edward Island Revenue \$, Fiscal Years Ended March 31st, 1988, 1989 and 1990	77
79.	Province of Prince Edward Island Ordinary Expenditure \$, Fiscal Years Ended March 31st, 1989 and 1990	78
80.	Revenues and Expenditures by All Levels of Government, National Accounts Basis, Prince Edward Island 1985-1989	79
81.	Prince Edward Island Provincial Government Employment	80
82.	Provincial Government Employment and Payroll in Prince Edward Island	81
83.	Federal Government Employment and Payroll in Prince Edward Island	82

PRINCE EDWARD ISLAND
ECONOMIC REVIEW 1990

1. INTRODUCTION

The Annual Statistical Review presents a commentary on the provincial economic situation during the past year and some background on the national economic situation. It is based on statistical information available at the time of publication and in some cases the data are preliminary and therefore subject to revision.

2. ECONOMIC SUMMARY

The Canadian economy fell into decline in the second quarter of 1990 and continued to decline throughout the remainder of the year. Canadian real Gross Domestic Product, the value of all goods and services produced in the country, increased in 1990 by a marginal 0.9 per cent, down from an increase of 3.0 per cent in 1989. This recession is generally attributed to high interest rates in Canada, the high external value of the Canadian dollar, and a recession in the United States that started in late 1990. The Bank of Canada maintained a relatively tight monetary policy throughout the first 5 months of 1990 until it was apparent that the Canadian economy was weakening. Three Month Treasury Bills peaked at 13.67 per cent in May 1990, but the Bank allowed interest rates to fall in the latter part of the year and Treasury Bills declined 2.2 percentage points by the end of December 1990.

The consequences of the national recession were apparent in the labour market. Average monthly employment in Canada increased by only 0.7 per cent in 1990 over its level in 1989, but during the year, monthly employment declined from April to December. On an annual basis, the average monthly rate of unemployment for Canada in 1990 increased to 8.1 per cent from 7.5 per cent in 1989, and stood at 9.3 per cent in December 1990. The December unemployment rate was the highest since April 1987 and compares to the low of 7.2 per cent in March 1990.

The Prince Edward Island economy in 1990 experienced a marginal increase following slow gains in 1989. The strongest area in the provincial economy in 1990 was non-residential construction. However, the value of fish landings in 1990 fell primarily as a result of poor lobster prices. Tourist visitation and tourist expenditures also dropped substantially. The agricultural sector had mixed results in 1990 with increases in livestock prices and an increased potato harvest, but there was a significant reduction in hog slaughters. The economic slowdown resulted in a significant rise in the unemployment rate.

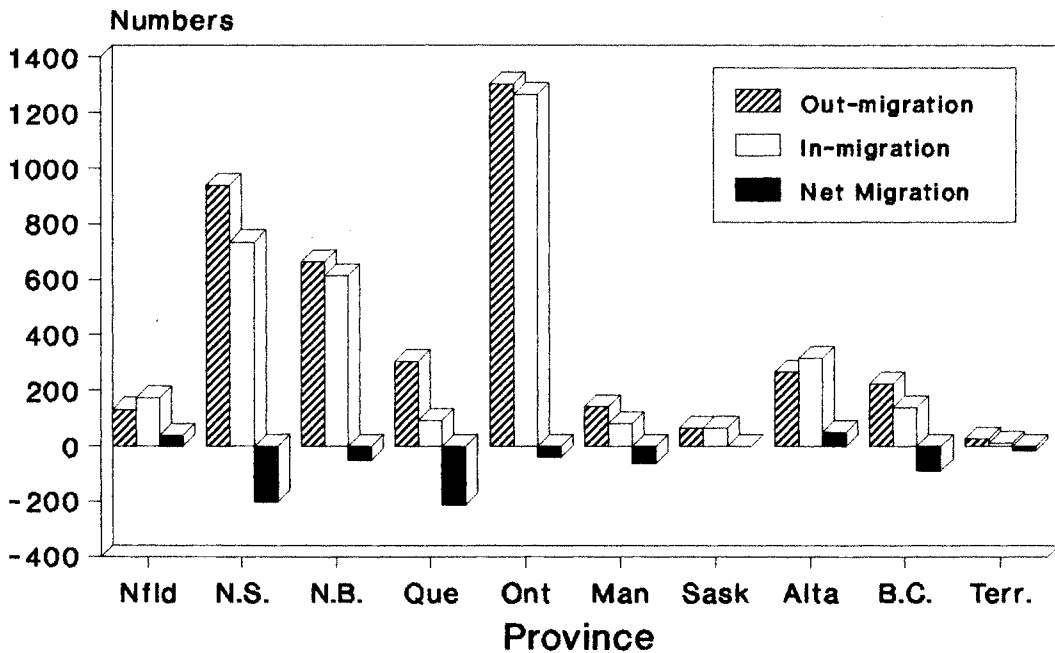
3. POPULATION

At June 1st 1990, Prince Edward Island's population was estimated by Statistics Canada to be 130,300 compared to 129,900 a year earlier. This gain results from 1,953 births, 1,127 deaths,

and a total net out-migration of approximately 450. Net out-migration reversed the pattern of net in-migration experienced throughout most of the mid and late 1980's. The gross interprovincial migration flows and net results for the period June 1st 1989 to May 31st 1990 are shown in Diagram 1. The weak economic situation and the phased closure of the Summerside airbase are the main causes of the net out-migration in 1990. By October 1990, the population is estimated to have been 130,200, down from 130,500 on January 1, 1990.

Diagram 1

**INTERPROVINCIAL MIGRATION
1989-90, P.E.I.**

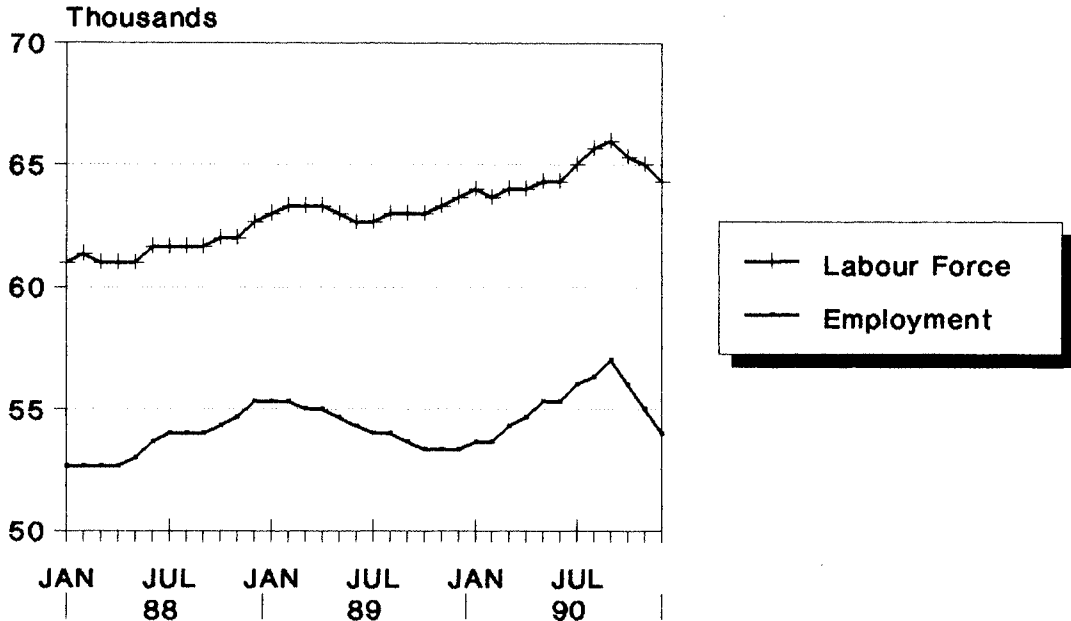


4. LABOUR FORCE

Prince Edward Island's average monthly labour force in 1990 reached 65,000, an increase of 3.2 per cent over 1989. This was largely the result of a rise in labour force participation rate which in 1990 reached a high of 66.0 per cent, up from 65.0 per cent in 1989. Most of this increase in the participation rate was due to higher rates of female participation in the labour force. Typically the Prince Edward Island participation rate is 2 percentage points below the national average, but in August 1990 it actually exceeded the national rate on a seasonally adjusted basis. This increased participation rate narrowed the Prince Edward Island - Canada annual differential to one percentage point.

Diagram 2

LABOUR FORCE & EMPLOYMENT
Prince Edward Island, 1988-90



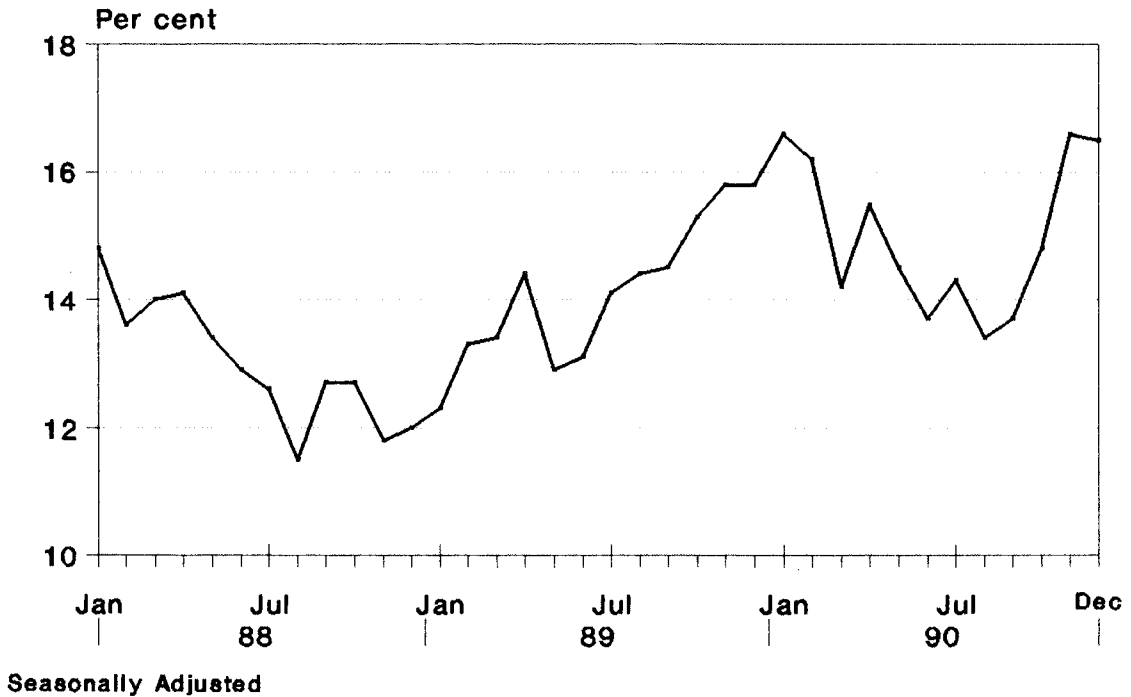
**Moving Average of Seasonally Adjusted
Labour Force Survey data.**

Diagram 2 shows monthly trends in the labour force and level of employment on a seasonally adjusted basis for Prince Edward Island for the period 1988 to 1990. Annual employment in 1990 increased to 55,000, up from 54,000 in 1989. Seasonally adjusted monthly employment in late summer 1990 reached 57,000, and then fell significantly in the months afterwards as can be seen in Diagram 2. The drop in employment, combined with a continued high labour force, pushed the unemployment rate to high levels by the end of 1990.

Diagram 3 shows the seasonally adjusted unemployment rate for Prince Edward Island for the period 1988 to 1990. The monthly unemployment rate for Prince Edward Island averaged 14.9 per cent in 1990 compared to 14.1 per cent in 1989, and 13.0 per cent in 1988, and closed December 1990 at 16.5 per cent.

Diagram 3

**UNEMPLOYMENT RATE
P.E.I., 1988-90**



Unemployment Insurance dependence on Prince Edward Island declined marginally during 1990 as the total number of weeks paid declined by 3.4 per cent to fall to 677,000 weeks. Most of the decline in weeks paid occurred in the second half of 1990 when employment was falling. The average weekly payment for Unemployment Insurance beneficiaries in 1990 rose to \$223.28, an increase of 4.9 per cent over 1989. The combination of higher average weekly payment but lower number of weeks paid resulted in total benefits paid to increase by only 1.8 per cent in 1990.

5. INFLATION

The Charlottetown-Summerside Consumer Price Index in 1990 increased 5.0 per cent compared to a 4.8 per cent increase in the Canadian Consumer Price Index. This was the first time since 1981 that the rate of increase in the Charlottetown-Summerside Consumer Price Index exceeded the increase in Canada's Consumer Price Index. The Consumer Price Index for Charlottetown-Summerside rose more than the national Consumer Price Index due to higher price increases in tobacco and alcohol, health and personal care items, and food.

**Comparison of Annual Percentage
Increases in Consumer Price Index, 1990**

	Charlottetown- Summerside	Canada
Food	5.4	4.2
Housing.....	4.3	4.5
Clothing.....	1.8	2.9
Transportation.....	4.5	5.6
Health & Personal Care.....	7.1	4.9
Recreation & Education.....	4.0	4.3
Tobacco & Alcohol	12.1	8.7
Energy.....	<u>9.2</u>	<u>10.0</u>
All Items	5.0	4.8

The above table shows the increases in the components of the Consumer Price Index for Charlottetown-Summerside and Canada. Energy prices on Prince Edward Island, which had generally been in decline since 1986, increased 9.2 per cent in 1990 due to higher oil prices early in the year and again in the latter part of the year due to the Gulf Crisis.

6. PERSONAL INCOME

Statistics Canada estimates the value of personal income on Prince Edward Island to have been \$1,989 million in 1989, the most recent year for which complete data is available. This represents an increase of 5.9 per cent, down from 12.7 per cent growth in 1988. Slower growth in personal income in 1989 was due to a decline in net income of farmers, and slow growth in unincorporated business income and government transfers to persons.

Indications are that personal income growth in 1990 slowed further as the result of reduced military pay, a marginal increase in Unemployment Insurance benefits paid to Islanders, and more importantly, a slow down in labour income growth in 1990 at 6.3 per cent, down from 7.7 per cent in 1989, and 10.8 per cent in 1988. This slow growth was due to average weekly wages in 1990 rising by 4.7 per cent combined with slow employment growth.

7. GROSS DOMESTIC PRODUCT

(a) Gross Domestic Product.

Prince Edward Island's Gross Domestic Product at Market Prices in 1989, the most recent year for which provincial economic accounts data is available, was \$1,905 million. Gross Domestic Product in constant dollars for Prince Edward Island in 1990 is estimated by the Conference Board of Canada to have increased by 1.2 per cent. This is a measure of the increased volume of economic production and does not account for sectors which experienced weak prices.

(b) Gross Provincial Expenditures

On the expenditure side of the provincial economic accounts, in 1989 personal expenditures in current dollars on goods and services increased by 5.8 per cent, current expendi-

ture on goods and services by all three levels of government increased by 2.6 per cent, government investment dropped by 2.0 per cent, and business fixed investment increased by 5.4 per cent.

Statistics Canada recently produced provincial constant dollar estimates of components of final domestic demand. Their estimates for 1989 show that real personal expenditure on goods and services increased by 1.9 per cent, real government expenditure in constant dollars fell by 1.2 per cent, government investment declined by 3.2 per cent, and business fixed investment increased by only 0.7 per cent.

Although complete economic accounts data for 1990 are not yet available, the indications are that consumer spending in constant dollars declined significantly on Prince Edward Island. Information on car sales, retail spending, housing starts and tourism are all negative. On the other hand, business investments increased. The value of international exports in current dollars, from Prince Edward Island in 1990 increased by 4.0 per cent to reach approximately \$167.6 million. The United States continues to be the destination of the majority of Prince Edward Island's international exports with over 60.8 per cent of total exports in 1990, down from 65.6 per cent in 1989.

8. SECTOR DETAIL

(a) Agriculture

The agricultural sector had mixed results in 1990. The strength included a high value of farm cash receipts from potatoes, increased slaughtering of cattle, and good gains for livestock generally. But farm cash receipts in 1990 declined by 2.0 per cent to value \$249.0 million from the record \$254.2 million in 1989. A decline in receipts for the sale of crops was partially offset by increased receipts from livestock sales.

Farm cash receipts from the sale of potatoes, which accounted for 85.3 per cent of total crop receipts, declined by 4.2 per cent. This decline is in part due to a drop in the price of potatoes to \$7.95 per cwt for the 1989 crop (marketed in late 1989 and in 1990) from \$8.66 for the 1988 crop.

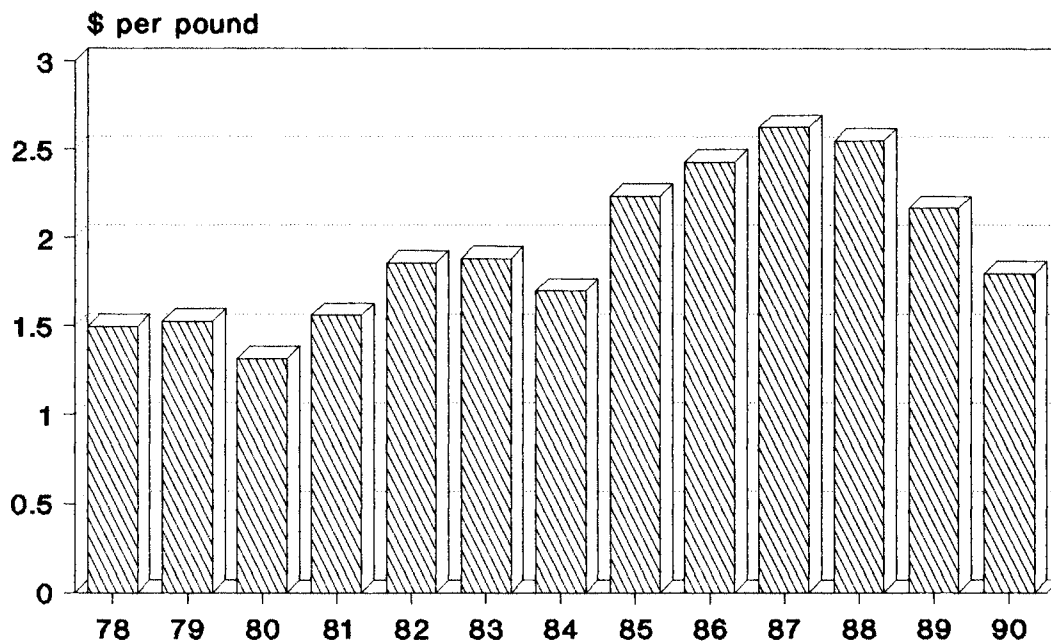
Farm cash receipts from the sale of livestock in 1990 increased 8.0 per cent on the strength of higher prices for both cattle and hogs. Cattle slaughtering on Prince Edward Island in 1990 increased by 7.7 per cent over 1989, and farm cash receipts from sales of cattle rose to \$30.7 million, an increase of 16.0 per cent over 1989. Hog slaughtering on Prince Edward Island in 1990 declined by 6.2 per cent in spite of higher prices received for hogs.

(b) Fishing

The value of fish landings on Prince Edward Island in 1990 declined by 8.0 per cent to value \$66.8 million. This was primarily the result of low lobster prices. Although the total landings of lobster in 1990 increased 5.6 per cent, the total value of lobster landings declined 12.4 per cent. Diagram 4 shows the average price of lobster over the period 1978 to 1990. The average price of lobster paid to the fishermen in 1990 was \$1.80 per pound, the lowest since 1984.

Diagram 4

**AVERAGE LOBSTER PRICES
P.E.I., 1978-90**



The groundfish harvest in 1990 increased by 18.6 per cent in terms of volume and 9.3 per cent in value. Redfish continues to be the main type of groundfish landed, comprising 56.7 per cent of the total landed weight of groundfish. The pelagic and estuarial species landings increased sharply in 1990 as the result of an improved herring fishery. The landings of herring in 1990 increased by 194.0 per cent over 1989 to reach 26.8 million pounds. This level of herring landings is the highest level of landings since 1971.

(c) Forestry

Statistical information on the Prince Edward Island forestry sector is limited. The Prince Edward Island Department of Energy and Forestry estimates that total forest production in 1990 was 454,000 cubic metres of wood compared to 451,000 cubic metres in 1989. Of the total production in 1990 fuelwood accounted for 216,000 cubic metres.

(d) Manufacturing

Manufacturing on Prince Edward Island, at 6.8 per cent of Gross Domestic Product, forms a relatively small proportion of the provincial economy compared to Canada and primarily comprises the processing of agricultural and fish products. Total manufacturing shipments in 1990 were \$454.6 million, an increase of 16.3 per cent over 1989. 76.5 per cent

of shipments were from the Food and Beverage sector. Manufacturing shipments from the fish products industry in 1990 increased by 41.9 per cent over 1989, but this was in part due to an accumulation of inventories in 1989 that were shipped in 1990. Shipments from the Food and Beverage industry excluding fish products increased by 16.9 per cent in 1990. Monthly employment in manufacturing in 1990 declined slightly to average 3,600 compared to 3,700 in 1989.

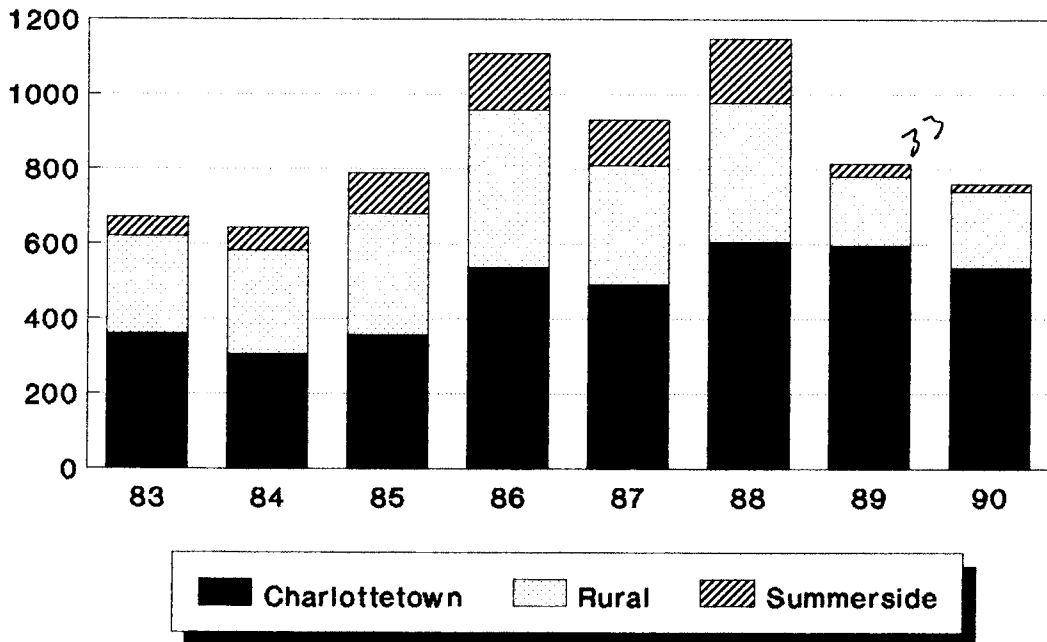
(e) **Construction**

Housing starts on Prince Edward Island in 1990 declined to 762 units from 815 units in 1989. This decline in housing starts was undoubtedly a response to high interest rates throughout 1990, and the phased closure of the Summerside Airbase. There were only 22 housing starts in the Summerside area in 1990 compared to 174 in 1988 prior to the announcement of the closure.

Diagram 5 shows the housing starts by area over the period 1981 to 1990. Housing starts have generally declined over the past two years and this has been in large part due to the decline in housing starts in the Summerside area. The rural areas have also experienced a large decline in housing starts falling to about 200 units in 1989 and 1990 from 370 units in 1988.

Diagram 5

**HOUSING STARTS BY REGION
P.E.I., 1983-90**



Capital spending on new non-residential construction, machinery and equipment by the business sector in 1990 increased by 18.3 per cent. Capital spending by government departments and institutions in 1990 decreased by 3.6 per cent, due primarily to declines in government departmental expenditure on machinery and equipment. Major non-residential construction projects in 1990 included investment by government departments (school construction in particular), shopping mall developments, and potato processing facilities. The average monthly employment in construction on Prince Edward Island in 1990 was 2,100, which was unchanged from the level in 1989.

(f) Transportation and Utilities

Two ferry systems connect Prince Edward Island to the mainland between Borden, Prince Edward Island and Cape Tormentine, New Brunswick, and Wood Islands, Prince Edward Island and Caribou, Nova Scotia. Another ferry operates between Souris, Prince Edward Island and Grindstone, Magdalen Islands, Quebec. The three ferry systems carried 2,377,553 passengers in 1990, a decline of 3.2 per cent from 1989. Most of the decline in passenger traffic occurred in July and August in view of the decline in tourism. Commercial traffic on the ferries in 1990 was up 6.6 per cent in contrast to passengers and automobiles. There were no rail shipments on ferries in 1990 as the Island's railway system was abandoned in late 1989 by Canadian National Railways.

(g) Retail Sales

The value of retail sales on Prince Edward Island in 1990 was \$796 million which was a decline of 0.5 per cent from the previous year. The decline in retail sales in 1990 can be attributed to the decline in tourist expenditures, coupled with the slow local economic conditions.

Diagram 6

**NUMBER OF NEW MOTOR VEHICLES SOLD
P.E.I., 1979-1990**

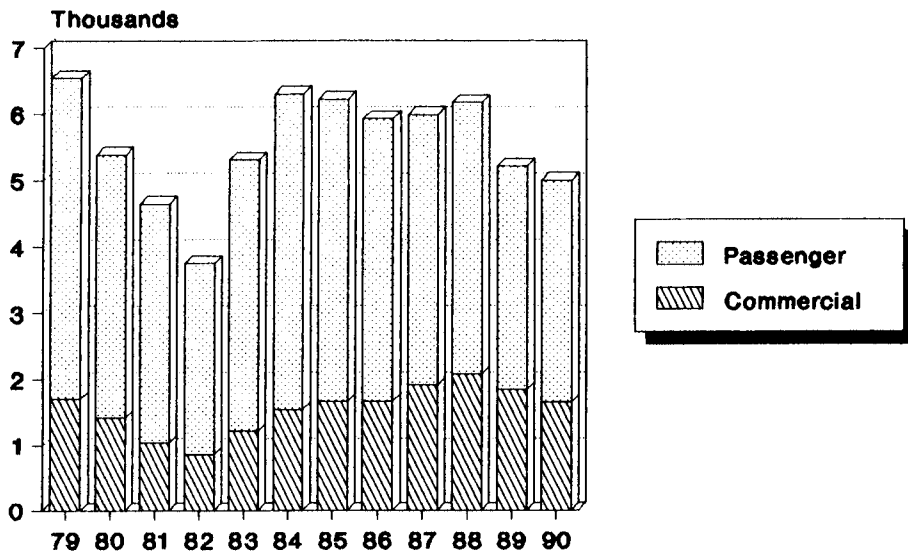


Diagram 6 shows the number of new motor vehicles sold on Prince Edward Island over the period 1979 to 1990 by passenger vehicles and commercial vehicles. New motor vehicle sales (in terms of numbers) in 1990 were 19.0 per cent below the level of 1988.

(h) Tourism

The 1990 tourist season on Prince Edward Island was poor and this was part of a general decline in tourism throughout Atlantic Canada. Total auto and air tourist parties to Prince Edward Island declined by 7.9 per cent from 1989 to reach a level of 229,874 parties in the 1990 tourist season. The value of tourist expenditure in 1990 dropped sharply to \$84.1 million from \$98.3 million in 1989.

(i) Government

Government activities are an important component of the Prince Edward Island economy. They involve the areas of federal and provincial general government, federal and provincial government enterprises, education, health and welfare. Monthly federal government employment (in general government and federal enterprises and excluding military personnel) in 1990 averaged 4,065 persons. This represents a decline of 5.4 per cent from 1989. The provincial government employed (in general government and provincial enterprises) about 5,300 persons on average during 1989, and average monthly employment during the first 9 months of 1990 increased by 5.8 per cent compared to the same period in 1989.

The closure of CFB Summerside is a major setback for the Island economy, and particularly the Summerside area. At the time of the announced closure of the airbase in early 1989, the number of military personnel on Prince Edward Island was approximately 950. By the end of 1990 military employment had fallen to about 625. These numbers do not account for civilian personnel at the base.

TABLE 1
POPULATION AND VITAL STATISTICS
PRINCE EDWARD ISLAND

1991 Census families 34.8
calendar year

Year	June 1st	January - December			
	Population ('000)	Births	Deaths	Net Migration	Marriages
1980	122.8	1,958	1,035	-730	939
1981	122.5	1,897	992	-235	849
1982	122.4	1,924	980	87	855
1983	123.7	1,907	1,050	818	938
1984	125.1	1,954	1,109	564	1,057
1985	126.0	2,008	1,110	38	956
1986	126.6	1,928	1,121	-389	970
1987	127.3	1,955	1,116	427	924
1988	128.5	1,977	1,112	521	965
1989r	129.9	1,937	1,089	308	1,019
1990p	130.3	1,880	1,110	-1,385	1,060

Quarterly

1989r

1st Quarter . . r	129.5	434	251	144	56
2nd Quarter . . r	129.7	504	283	-49	237
3rd Quarter . . r	129.9	546	258	-130	548
4th Quarter . . r	130.0	453	297	343	178

1990p

1st Quarter . . p	130.5	480	320	-310	70
2nd Quarter . . p	130.4	460	240	-307	240
3rd Quarter . . p	130.3	490	260	-377	560
4th Quarter . . p	130.2	450	290	-391	190

Note: Yearly population figures are as of June 1 of each year. Quarterly population figures are of the first of each quarter. Population figures for 1980-April 1986 are final intercensal estimates, quarterly data for 1989 and 1990 are preliminary postcensal estimates based on the 1986 Census.

p: preliminary r: revised

Source: Statistics Canada Catalogues; 84-001 Vital Statistics Quarterly; 84-204 Births & Deaths; 84-205 Marriages & Divorces; 91-001 Quarterly Demographic Statistics; 91-201 Estimates of Population.

1991
1st q 129.5
2nd q 130.3
3rd q 130.1
4th q 129.1

3 } -1518
-231
-1284

2
-29
-232
1319
1580

TABLE 2
IN-MIGRATION TO PRINCE EDWARD ISLAND BY PROVINCE OF ORIGIN
1984-85 TO 1989-90

Province of Origin	1984-85	1985-86	1986-87	1987-88	1988-89	1989-90
Newfoundland	139	133	113	159	162	173
Nova Scotia	677	712	559	742	789	735
New Brunswick	406	447	495	424	483	612
Quebec	136	161	158	161	177	93
Ontario	833	751	806	1,057	1,154	1,264
Manitoba	71	77	54	83	57	79
Saskatchewan	54	74	70	71	66	64
Alberta	397	311	326	324	311	315
British Columbia	171	111	109	107	166	137
Yukon	1	10	2	4	7	0
Northwest Territories . .	19	43	26	31	18	10
Total In-Migration	2,904	2,830	2,718	3,163	3,390	3,482

Note: All data for year June 1st to May 31st.

Source: Statistics Canada Catalogues: 91-208, International and Interprovincial Migration in Canada; and 91-210, Postcensal Annual Estimates of Population by Marital Status, Age, Sex and Components of Growth for Canada, Provinces and Territories.

TABLE 3
OUT-MIGRATION FROM PRINCE EDWARD ISLAND
BY PROVINCE OF DESTINATION
1984-85 TO 1989-90

Province of Destination	1984-85	1985-86	1986-87	1987-88	1988-89	1989-90
Newfoundland	118	86	89	110	133	133
Nova Scotia	686	759	776	650	835	937
New Brunswick	390	485	472	531	502	663
Quebec	154	111	166	133	132	306
Ontario	804	843	962	997	927	1,304
Manitoba	64	67	61	33	74	142
Saskatchewan	48	51	26	42	29	66
Alberta	233	324	202	209	204	265
British Columbia	139	151	148	150	140	225
Yukon	4	4	13	5	4	3
Northwest Territories	<u>14</u>	<u>25</u>	<u>23</u>	<u>8</u>	<u>29</u>	<u>24</u>
Total Out-Migration	2,654	2,906	2,938	2,868	3,009	4,068

Note: All data for year June 1st to May 31st.

Source: Statistics Canada Catalogues 91-208, International and Interprovincial Migration in Canada; and 91-210, Postcensal Annual Estimates of Population by Marital Status, Age, Sex and Components of Growth for Canada, Provinces and Territories.

TABLE 4
COMPONENTS OF INTERNATIONAL AND INTERPROVINCIAL MIGRATION
PRINCE EDWARD ISLAND, 1967-68 TO 1989-90

Year	INTERNATIONAL MIGRATION			INTERPROVINCIAL MIGRATION			Total Net Migration
	Immigration	Emigration	Net Migration	In Migration	Out Migration	Net Migration	
1967-68	152	565	-413	3,754	3,865	-111	-524
1968-69	187	491	-304	3,930	4,526	-596	-900
1969-70	167	459	-292	3,207	4,809	-1,602	-1,894
1970-71	176	350	-174	4,023	3,801	222	48
1971-72	181	73	108	4,299	4,009	290	398
1972-73	171	69	102	4,332	3,409	923	1,025
1973-74	354	92	262	4,756	4,254	502	764
1974-75	299	87	212	5,428	4,037	1,391	1,603
1975-76	204	72	132	4,392	3,742	650	782
1976-77	208	194	14	3,837	3,683	154	168
1977-78	174	221	-47	3,933	3,233	700	653
1978-79	172	210	-38	3,584	3,658	-74	-112
1979-80	301	148	153	3,185	3,543	-358	-205
1980-81	148	148	0	3,116	4,367	-1,251	-1,251
1981-82	145	48	97	3,375	4,231	-856	-759
1982-83	141	78	63	3,403	2,767	636	699
1983-84	112	87	25	3,219	2,422	797	822
1984-85	110	71	39	2,904	2,654	250	289
1985-86	130	66	64	2,830	2,906	-76	-12
1986-87	162	62	100	2,718	2,938	-220	-120
1987-88	159	44	115	3,163	2,868	295	410
1988-89	139	32	107	3,390	3,009	381	488 488
1989-90 p	193	56	137	3,482	4,068	-586	449 -115
90-91							-222

p: preliminary

Note: All data for year June 1st to May 31st.

Source: Statistics Canada Catalogues 91-208, International and Interprovincial Migration in Canada, and 91-210, Postcensal Annual Estimates of Population by Marital Status, Age, Sex and Components of Growth For Canada, Provinces and Territories.

TABLE 5
POPULATION BY SEX AND AGE GROUPS (AS OF JUNE 1ST)
PRINCE EDWARD ISLAND ('000)

Age Group	1988			1989			1990			
	Male	Female	Total	Male	Female	Total	Male	Female	Total	
Total	63.6	64.8	128.5	64.3	65.6	129.9	64.4	65.9	130.3	130.3
0-4	4.9	4.8	9.7	5.0	4.8	9.8	5.0	4.9	9.9	
5-9	5.0	4.8	9.8	5.0	4.8	9.8	5.0	4.8	9.8	29.8
10-14	5.1	4.8	9.9	5.2	4.8	10.0	5.2	4.9	10.0	
15-19	5.5	5.0	10.5	5.4	4.9	10.3	5.3	4.8	10.0	9.7
20-24	5.5	5.5	11.0	5.4	5.3	10.7	5.1	5.0	10.1	9.7
25-29	5.4	5.3	10.7	5.5	5.5	11.0	5.6	5.5	11.2	10.7
30-34	5.1	5.2	10.3	5.3	5.3	10.6	5.3	5.4	10.7	10.8
35-39	4.7	4.8	9.5	4.8	4.9	9.7	4.8	4.9	9.7	10.0
40-44	4.2	4.2	8.4	4.4	4.4	8.8	4.6	4.7	9.3	9.5
45-49	3.2	3.1	6.3	3.3	3.3	6.6	3.4	3.3	6.7	7.0
50-54	2.8	2.8	5.6	2.9	2.8	5.7	3.0	2.9	5.9	5.9
55-59	2.7	2.6	5.3	2.7	2.6	5.3	2.7	2.6	5.3	5.4
60-64	2.4	2.6	5.0	2.5	2.6	5.1	2.5	2.6	5.1	5.0
65-69	2.3	2.7	5.0	2.3	2.7	5.0	2.3	2.6	4.9	4.9
70-74	1.9	2.4	4.3	1.9	2.3	4.2	1.9	2.4	4.3	4.2
75-79	1.4	1.9	3.3	1.4	2.0	3.4	1.4	2.1	3.5	3.4
80-84	0.8	1.2	2.0	0.8	1.3	2.1	0.9	1.3	2.2	2.2
85-89	0.4	0.8	1.2	0.3	0.7	1.0	0.3	0.7	1.0	1.1
90+	0.2	0.5	0.7	0.2	0.5	0.7	0.2	0.4	0.7	0.7
Broad Age Grouping (000's)										
0-14	15.0	14.3	29.3	15.2	14.4	29.6	15.2	14.6	29.7	29.5
15-44	30.4	30.0	60.4	30.8	30.3	61.1	30.7	30.3	61.0	60.4
45-64	11.2	11.1	22.3	11.4	11.3	22.7	11.6	11.4	23.0	23.3
65+	7.0	9.4	16.4	6.9	9.5	16.4	7.0	9.5	16.6	16.7

Note: Each figure has been rounded independently to the nearest hundred. Numbers may not total due to rounding.

Source: Statistics Canada Catalogue 91-210, Postcensal Annual Estimates of Population by Marital Status, Age, Sex and Components of Growth for Canada, Provinces and Territories.

TABLE 6
POPULATION OF CITIES, TOWNS, VILLAGES AND
INDIAN RESERVES IN PRINCE EDWARD ISLAND

	1981 (1)	1986 (2)		1981 (1)	1986 (2)
Abram's Village	330 A	334	Morell	347	359
Alberton	1,011 A	1,103	Morell (3)	17	12
Bedeque	162	158	Mount Stewart	317 A	344
Borden	485	514	Murray Harbour	436 A	404
Brackley	295 A	306	Murray River	440 A	476
Bunbury	1,024	1,054	North River	1,504 A	1,732
Cardigan	321	346	North Rustico	694 A	635
Central Bedeque	192 A	199	O'Leary	741 A	823
Charlottetown	15,282	15,776	Parkdale	2,018	2,065
Clyde River	490 A	523	Queen's Royalty	196	225
Cornwall	1,841 A	1,894	Rocky Point (3)	20	26
Crapaud	303	332	Scotchfort (3)	96	117
Cross Roads	942 A	1,765	Sherbrooke	461 A	567
East Royalty	1,863 A	2,039	Sherwood	5,705 A	5,769
Elliot River	338 A	417	Souris	1,407 A	1,379
Georgetown	737	729	Southport	1,302 A	1,321
Hillsborough Park	1,036 A	996	St. Eleanors	3,564 A	3,743
Hunter River	289 A	317	St. Louis	156	135
Kensington	1,246 A	1,105	St. Peters	254 A	265
Keppoch-Kinlock	361 A	453	Summerside	7,828	8,020
Kings Royalty	177	195	Tignish	982	960
Kinkora	288 A	256	Tyne Valley	161 A	187
Lennox Island (3)	174	212	Union	166 A	187
Linkletter	286 A	305	Victoria	168 A	189
Meadowbank	202 A	258	Wellington	381 A	405
Miltonvale Park	941 A	1,080	West Royalty	1,686	2,070
Miminegash	313 A	288	Wilmot	1,563	1,708
Miscouche	734 A	677	Winsloe	1,067 A	1,123
Montague	1,957	1,994			

PACE →

- (1): 1981 statistics are adjusted to conform to 1986 municipal boundaries.
- (2): Final Population Count of the 1986 Census of Population.
- (3): Indian Reserves.
- A: Adjusted figures due to boundary changes.

Source: 1986 Census of Canada, Catalogue 92-110, Population and Dwelling Counts, Prince Edward Island.

TABLE 7

1986 CENSUS DATA ON POPULATION, DWELLINGS, HOUSEHOLDS AND FAMILIES

	KINGS	QUEENS	PRINCE	P.E.I.
POPULATION	19,509	63,460	43,677	126,646
Male	10,085	30,915	21,895	62,895
Female	9,425	32,545	21,775	63,750
DWELLINGS & HOUSEHOLDS				
Occupied Private Dwellings	6,050	20,985	13,665	40,690
Owned	5,135	14,460	10,530	30,120
Rented	910	6,485	3,075	10,470
On Reserve	5	35	60	100
Single Detached	5,345	14,085	10,675	30,105
Apartment, 5 or More Stories	-	35	-	40
Movable dwellings	220	715	635	1,575
All other types	480	6,145	2,355	8,980
Dwellings by main heating fuel				
Gas	60	105	105	270
Electricity	205	1,150	565	1,925
Oil (including Kerosene)	2,810	15,785	8,180	26,775
Other fuels (includes wood, coal, coke and other forms of energy)	2,970	3,940	4,815	11,730
CENSUS FAMILIES				
Families in Private Households	4,780	16,015	11,275	32,070
Husband-Wife Families	4,220	13,725	10,090	28,030
With no children at home	1,255	4,485	3,210	8,950
With children at home	2,965	9,235	6,875	19,080
Lone-Parent Families	565	2,290	1,185	4,040
Male parent	120	385	225	735
Female parent	435	1,905	965	3,305
Average No. of Persons per Family	3.5	3.3	3.4	3.4
Average No. of Children per Family (1)	1.6	1.5	1.5	1.5
FAMILY INCOME				
Under \$9,999	405	1,030	845	2,285
\$ 10,000 - 29,999	2,705	7,370	6,250	16,325
\$ 30,000 - 49,999	1,295	5,090	3,050	9,435
\$ 50,000 +	385	2,520	1,125	4,030
Average Family Income (\$)	27,080	32,741	28,628	30,451

1: The average number of children per family is calculated using the total number of children at home and the total number of census families. ← S.P.A.

Note: Totals may not equal the sum of the components due to rounding.

Source: 1986 Census of Canada, Catalogues 94-103, Prince Edward Island Part 1, Profiles; 94-104, Prince Edward Island Part 2, Profiles.

TABLE 8
PRINCE EDWARD ISLAND WORKING AGE POPULATION,
LABOUR FORCE, EMPLOYMENT AND UNEMPLOYMENT
ANNUAL AVERAGES 1980-1990

Year	Population ('000)	Population 15+ ('000)	Labour Force ('000)	Participation Rate (%)	Employed ('000)	Unemployed ('000)	Unemployment Rate (%)
1980	122.8	89	53	59.2	47	6	10.6
1981	122.5	90	53	58.7	47	6	11.2
1982	122.4	90	52	57.8	45	7	12.9
1983	123.7	91	55	60.3	48	7	12.2
1984	125.1	93	56	60.5	49	7	12.8
1985	126.0	94	58	61.5	50	8	13.3
1986	126.6	94	59	62.1	51	8	13.4
1987	127.3	95	60	62.9	52	8	13.2
1988	128.5	96	62	64.0	54	8	13.0
1989	129.9	97	63	65.0	54	9	14.1
1990	130.3	98	65	66.0	55	10	14.9

PRINCE EDWARD ISLAND LABOUR FORCE,
EMPLOYMENT AND UNEMPLOYMENT, BY SEX
ANNUAL AVERAGES 1986 - 1990

		Population 15+ ('000)	Labour Force ('000)	Participation Rate (%)	Employed ('000)	Unemployed ('000)	Unemployment Rate (%)
1986	MALE	46	33	71.6	29	4	13.0
	FEMALE	48	26	52.9	22	4	14.0
1987	MALE	46	34	72.3	29	4	12.7
	FEMALE	49	26	53.9	23	4	13.8
1988	MALE	47	34	73.0	30	4	11.5
	FEMALE	49	27	55.5	23	4	14.9
1989	MALE	47	35	73.1	30	5	13.7
	FEMALE	50	29	57.3	24	4	14.6
1990	MALE	48	35	73.4	30	5	14.6
	FEMALE	50	30	59.0	25	4	15.2

Source: Statistics Canada Catalogue 91-201, Estimates of Population for Canada; 71-001, The Labour Force; and 71-201 Historical Labour Force Statistics.

TABLE 9
ESTIMATES OF EMPLOYEES BY INDUSTRY
PRINCE EDWARD ISLAND 1984-1990
('000)

	1984	1985	1986	1987	1988	1989	1990 p
Industry							
Manufacturing <i>L18743</i>	2.9	3.0	3.1	3.5	3.6	3.7	3.6
Construction <i>L18745</i>	1.5	1.3	1.6	1.8	2.2	2.1	2.1
Transportation, Communication and Other Utilities <i>L18748</i>	3.2	3.0	3.0	3.1	3.2	3.1	3.1
Trade <i>L18750</i>	5.3	5.4	5.7	6.3	6.7	6.7	6.8
Finance, Insurance and Real Estate <i>L18756</i>	1.2	1.3	1.4	1.4	1.5	1.5	1.5
Community, Business and Personal Services <i>L18757</i>	10.5	10.5	11.4	13.2	13.8	14.3	14.7
Public Administration <i>L18761</i>	4.8	4.9	4.7	4.8	5.0	5.2	5.5
Total Non-Agricultural Industries <i>L18741</i>	29.6	29.7	31.0	34.1	36.2	36.6	37.3

p: preliminary

- 1: Adjustments to SEPH data for the period 1983-1986 are required when making comparisons with the 1987 estimates and later estimates. Information on these adjustment factors were published in the May 1987 issue of Employment, Earnings and Hours.
- 2: Does not include estimates on the following categories: Agriculture, Fishing and trapping, private households, religious organizations and the military.

Source: Statistics Canada, Catalogue 72-002, Employment, Earnings and Hours.

Education L18758
Health L18759
Accommodation L18760
Goods: *L18742*

TABLE 10
AVERAGE WEEKLY WAGES AND SALARIES,
TOTAL WAGES AND SALARIES FOR PRINCE EDWARD ISLAND

Year	Average Weekly Wages and Salaries Industrial Composite (\$) ¹	Average Weekly Wages and Salaries Industrial Aggregate (\$) ¹	Total Wages and Salaries (\$ Millions)
1980	230.03	-	434.7
1981	250.13	-	482.1
1982	278.53	-	536.1
1983	295.20	-	567.7
1984	299.79	324.55	620.8
1985 r	306.74	339.30	689.5
1986 r	(a)	348.50	739.0
1987 r	(a)	362.39	803.6
1988 r	(a)	379.26	887.2
1989 r	(a)	400.68	956.7
1990 p	(a)	419.67	1,016.8

1990 Monthly:

January	418.60	75.4
February	410.80	75.0
March	414.94	76.3
April	418.16	78.6
May	412.29	87.0
June	410.20	91.1
July	416.84	92.0
August	417.55	93.2
September	425.51	92.6
October	427.43	88.4
November	427.99	84.8
December p	435.70	82.5

p: preliminary

r: revised

1: In March 1983 Statistics Canada implemented a new survey of Employment Payroll and Hours. For more information on this new survey see the March 1983 Supplement to Employment Earnings and Hours, catalogue number 72-002. Statistics on the Industrial Composite are being updated by the more comprehensive Industrial Aggregate.

2: Adjustments to SEPH data for the period 1983-1986 are required when making comparisons with the 1987 estimates and later estimates. Information on these adjustment factors were published in the May 1987 issue of Employment, Earnings and Hours.

(a): The Industrial Composite was terminated in December of 1985.

Source: Statistics Canada Catalogues 72-002, Employment, Earnings and Hours; 72-005, Estimates of Labour Income.

TABLE 11
UNEMPLOYMENT INSURANCE STATISTICS
PRINCE EDWARD ISLAND, 1977 - 1990

Year	Employee Contributions To Unemployment Insurance (\$000's)	Total U.I. Benefits Paid In P.E.I.	Total Number Of Weeks Paid To Beneficiaries	Average Weekly Payment (\$) To Beneficiaries	Average Monthly Number Of Beneficiaries
1977	3,899	38,308,000	423,078	90.69	8,027
1978	4,347	45,500,236	453,620	100.30	8,664
1979	4,394	43,320,430	432,044	100.27	8,297
1980	4,702	46,481,771	416,422	111.62	7,950
1981	6,750	52,943,512	446,805	118.49	8,604
1982	6,784	69,025,442	527,830	130.77	9,906
1983	10,297	81,727,181	573,637	142.47	10,719
1984	11,751	98,225,366	645,995	152.05	12,390
1985	12,990	106,916,220	670,900	159.37	12,920
1986	14,015	120,047,150	696,670	172.32	12,930
1987	15,329	123,179,340	665,040	185.22	12,610
1988	17,058	138,544,830	694,800	199.41	12,700
1989	na	151,154,210	700,860	215.67	13,560
1990 p	na	153,846,500	676,970	223.28	13,297

p: Preliminary

Note: 1989 and 1990 data on Employee Contributions were not available at time of publication.

Source: Statistics Canada, Catalogues 73-001, Unemployment Insurance Statistics; 73-201, Annual Report, Benefit Periods Established and Terminated Under The Unemployment Insurance Act; 73-202S, Unemployment Insurance Statistics, Annual Supplement.

TABLE 12
PERSONAL INCOME, PRINCE EDWARD ISLAND
1985-1989, (\$ MILLIONS)

	1985	1986	1987	1988	1989
Wages, Salaries & Supplementary Labour Income	751	808	877	972	1,047
Military Pay and Allowances	31	32	33	34	35
Net Income received by Farm Operators from Farm Production	-2	61	10	59	40
Net Income of Non-Farm Unincorporated Business Including Rent	125	142	162	169	170
Interest, Dividends and Miscellaneous Investment Income	150	164	176	198	230
Total Earned Income	1,055	1,207	1,258	1,432	1,522
Government Transfers	351	378	402	439	460
Other Transfers	8	7	7	7	7
Total Personal Income	1,414	1,592	1,667	1,878	1,989
Personal Disposable Income	1,194	1,336	1,375	1,550	1,638
Per Capita Personal Income \$	11,222	12,575	13,095	14,615	15,300
Per Capita Personal Income Canada \$	15,903	16,853	18,036	19,611	21,124
P.E.I. as a % of Canada	70.6	74.6	72.6	74.5	72.4
Earned Income as % of Total Personal Income	74.6	75.8	75.5	76.3	76.5

Source: Statistics Canada Catalogue 13-201, National Income and Expenditure Accounts.

TABLE 13
GOVERNMENT TRANSFER PAYMENTS TO PERSONS
PRINCE EDWARD ISLAND 1985 - 1989
(\$ MILLIONS)

	1985	1986	1987	1988	1989
FEDERAL:					
Family and Youth Allowance	14	14	14	14	14
Pensions - World Wars I & II	9	10	10	10	11
War Veterans' Allowance	9	9	8	7	6
Unemployment Insurance Benefits	107	119	122	138	150
Pensions to Government Employees.	14	16	17	18	19
Old Age Security Payments.	85	91	94	98	102
Adult Occupational Training Payments	1	-	-	-	-
Miscellaneous and all Other (1).	19	18	17	19	17
TOTAL FEDERAL	<u>258</u>	<u>277</u>	<u>282</u>	<u>304</u>	<u>319</u>
PROVINCIAL:					
Direct Relief	21	22	24	26	27
Old Age and Blind Pensions, Mothers' and Disabled Persons' Allowance (2)	-	-	-	-	-
Workmens' Compensation Benefits.	4	4	7	8	8
Pensions to Government Employees.	4	4	4	5	5
Grants to Post-Secondary Educational Institutions	18	23	27	30	30
Grants to Benevolent Associations	11	11	15	18	17
Miscellaneous.	7	5	6	5	5
TOTAL PROVINCIAL	<u>65</u>	<u>69</u>	<u>83</u>	<u>92</u>	<u>92</u>
LOCAL:					
TOTAL LOCAL	-	-	-	-	-
CANADA PENSION PLAN	<u>28</u>	<u>32</u>	<u>38</u>	<u>44</u>	<u>50</u>
TOTAL	<u>351</u>	<u>378</u>	<u>403</u>	<u>440</u>	<u>461</u>

Note - : nil or zero

Note 1: Includes re-established credits, grants to universities, assistance to immigrants, and grants from Canada Council.

Note 2: Old Age and Blind Pensions, and Mothers' and Disabled Persons' Allowance are included in Direct Relief.

Source: Statistics Canada Catalogue 13-213, Provincial Economic Accounts.

TABLE 14
GROSS PROVINCIAL EXPENDITURES
PRINCE EDWARD ISLAND, 1985-1989
(\$ MILLIONS)

1990

	1985	1986	1987	1988	1989
-- Personal Expenditures on Consumer Goods & Services (1)	1,120	1,193	1,280	1,389	1,469
Personal Expenditures on Consumer Goods	654	683	720	779	804
Personal Expenditures on Consumer Services	466	510	560	610	665
Government Current Expenditures on Consumer Goods & Services (2) . .	539	549	563	627	643
Gross Fixed Capital Formation (3) . . .	281	318	348	412	427
Government	73	73	82	98	96
Residential Construction	0	0	0	0	0
Non-Residential Construction	66	63	69	87	76
Machinery and Equipment	7	10	13	11	20
Business	208	245	266	314	331
Residential Construction	98	122	126	146	146
Non-Residential Construction	41	47	50	70	82
Machinery and Equipment	69	76	90	98	103
Final Domestic Demand = (1) + (2) + (3)	1,940	2,060	2,191	2,428	2,539
Value of Physical Change in Inventories	-18	60	-42	43	-26
Government	-1	0	0	0	0
Business	-17	60	-42	43	-26
Non-Farm	-4	23	-7	14	7
Farm and Grain in Commercial Channels	-13	37	-35	29	-33
<u>Total Final Expenditures</u>	<u>1,922</u>	<u>2,120</u>	<u>2,149</u>	<u>2,471</u>	<u>2,513</u>
Net Exports Plus Residual Error of Estimate	-602	-622	-562	-690	-616
Gross Provincial Expenditure at Market Price	1,320	1,498	1,587	1,781	1,897

for in it really a term.

Source: Statistics Canada Catalogue 13-213, Provincial Economic Accounts.

TABLE 15
PROVINCIAL GROSS DOMESTIC PRODUCT
BY COMPONENT, PRINCE EDWARD ISLAND, 1985 - 1989
(\$ MILLIONS)

	1985	1986	1987	1988	1989
Wages, Salaries & Supplementary Labour Income	751	808	877	972	1,047
Military Pay and Allowances	31	32	33	34	35
Corporation Profits before Taxes	86	98	111	116	114
Interest and Miscellaneous Investment Income	86	106	110	129	158
Accrued Net Income of Farm Operators from Farm Production	-2	61	10	59	40
Net Income of Non-Farm Unincorporated Business including Rent	125	142	162	169	170
Inventory Valuation Adjustment	<u>-3</u>	<u>-7</u>	<u>-4</u>	<u>-8</u>	<u>-5</u>
Net Provincial Income at Factor Cost	1,074	1,240	1,299	1,471	1,559
Capital Consumption Allowances	<u>163</u>	<u>174</u>	<u>185</u>	<u>197</u>	<u>211</u>
Provincial Gross Domestic Product at Factor Cost	<u>1,237</u>	<u>1,414</u>	<u>1,484</u>	<u>1,668</u>	<u>1,770</u>
Indirect Taxes	147	154	170	189	203
Subsidies	-64	-70	-67	-76	-76
Provincial Gross Domestic Product at Market Price	<u>1,320</u>	<u>1,498</u>	<u>1,587</u>	<u>1,781</u>	<u>1,897</u>

1990

Source: Statistics Canada Catalogue 13-213, Provincial Economic Accounts.

TABLE 16
PERFORMANCE OF GROSS DOMESTIC PRODUCT
PRINCE EDWARD ISLAND RELATIVE TO CANADA

Year	P.E.I. GDP at Market Prices		P.E.I. GDP at Market Prices	Canadian GDP	Canadian GDP at Market Prices	Canadian GDP in Constant \$	P.E.I. GDP in Constant \$
	\$ Millions	% Change	per capita	% Change	per capita	% Change	% Change*
1977	602	5.4	5,058.8	10.1	9,307.5	3.6	1.6
1978	682	13.3	5,636.4	10.9	10,269.1	4.6	8.1
1979	786	15.2	6,442.6	14.3	11,628.1	3.9	3.6
1980	846	7.6	6,878.0	12.2	12,880.3	1.5	-3.4
1981	1,009	19.3	8,203.3	14.8	14,610.4	3.7	-0.1
1982	1,051	4.2	8,614.8	5.1	15,209.6	-3.2	-0.9
1983	1,165	10.8	9,395.2	7.9	16,269.1	3.2	5.2
1984	1,297	11.3	10,376.0	10.0	17,761.8	6.3	4.8
1985	1,320	1.8	10,476.2	7.6	18,967.1	4.8	4.5
1986	1,498	13.5	11,795.3	5.6	19,884.2	3.1	5.6
1987	1,587	5.9	12,496.1	8.9	21,429.1	4.5	1.9
1988	1,781	12.2	13,806.2	10.0	23,295.8	5.0	7.7
1989	1,897	6.5	14,592.3	8.2	24,895.5	2.9	1.6
1990	na	na	na	4.0	25,483.2	0.9	1.2

+1.5

✓

-1.5

✓

na: not available

*: Conference Board of Canada

Source: Statistics Canada 13-001, National Income & Expenditure Accounts; 13-201, National Income & Expenditure Accounts, The Annual Estimates; 13-213, Provincial Economic Accounts.

TABLE 17
PROVINCIAL GROSS DOMESTIC PRODUCT AT FACTOR COST
FOR SELECTED INDUSTRIES (\$ MILLIONS)
PRINCE EDWARD ISLAND, 1982-1986

	1982	1983	1984	1985	1986
BUSINESS SECTOR					
Agriculture and Related Services	89.5	91.2	115.6	79.2	107.6
Fishing and Trapping	22.5	27.1	26.9	29.6	42.8
Logging & Forestry Industries	0.1	0.2	1.6	1.8	2.3
Mining, Quarrying & Oil Well	0.1	0.1	0.5	1.0	0.8
Manufacturing Industries	62.1	80.1	92.1	90.4	97.7
Food Industries	x	x	48.4	48.2	55.6
Wood Industries	1.5	2.7	7.9	6.1	6.4
Fabricated Metal Products	x	3.9	3.9	4.1	3.9
Transportation Equipment	x	4.6	4.2	3.5	x
Other Manufacturing Ind.	x	1.7	2.5	x	3.8
Construction	80.8	88.8	83.4	116.2	110.1
Other Utility Industries	22.3	23.5	31.6	37.4	44.0
Electrical Power Systems	21.7	22.7	30.8	36.7	43.0
Other Utility Ind.	0.6	0.8	0.8	0.7	1.0
Educational Service Industries	0.1	0.1	0.3	0.2	0.2
Health Services Industry	20.2	23.1	25.0	25.7	28.6
Accommodation & Food Service	32.0	35.3	36.8	41.8	45.2
NON-BUSINESS SECTOR					
Forestry Services Industry	1.6	1.2	0.8	1.5	1.3
Water Systems Industry	1.4	1.4	1.1	1.1	1.1
Provincial Government Service	68.7	75.3	51.6	77.5	80.2
Local Government Services	6.9	7.4	7.8	8.6	9.2
Educational Service Industries	76.4	83.5	86.6	95.3	104.6
Health & Social Services Ind.	60.9	68.0	68.3	93.4	101.2
SPECIAL AGGREGATION					
Business Sector-Goods	277.4	311.0	351.8	355.6	405.4
Non-Business Sector-Goods	1.4	1.4	1.1	1.1	1.1
Goods-Producing Industries	278.8	312.4	352.9	356.8	406.5
Total Selected Industries	545.6	606.3	630.0	621.2	776.9
Other Industries (1)	428.4	469.7	569.0	615.8	637.1
Total Gross Domestic Product at Factor Cost	974.0	1,076.0	1,199.0	1,237.0	1,414.0

1. Other industries were calculated by taking the difference between Total Gross Domestic Product at Factor Cost and Total Selected Industries.

x: confidential

Note: 1987 data was not available at time of publication.

Source: Table 15 in this Publication for Total Gross Domestic Product at Factor Cost, and Statistics Canada Catalogue 15-203, Provincial Gross Domestic Product at Factor Cost for Selected Industries.

TABLE 18
GROSS DOMESTIC PRODUCT BY INDUSTRY
PRINCE EDWARD ISLAND
(CONSTANT \$1986)

	1985	1986	1987	1988	1989	1990
Agriculture	77.0	106.1	90.7	92.8	93.1	92.6
%	-19.5	37.8	-14.5	2.3	0.3	-0.5
Fishing	35.1	42.8	42.4	46.6	47.5	51.1
%	0.1	22.0	-0.9	9.8	1.9	7.6
Construction	118.3	110.1	101.9	121.6	114.6	119.6
%	37.6	-6.9	-7.5	19.4	-5.8	4.4
Manufacturing	101.2	97.9	105.6	109.3	108.8	112.1
%	13.6	-3.2	7.8	3.5	-0.4	3.0
Utilities	40.6	46.4	48.3	50.3	51.8	54.3
%	16.9	14.2	4.0	4.1	2.9	4.9
Transportation & Communications	109.8	111.9	126.1	124.5	129.5	134.0
%	2.5	1.9	12.7	-1.3	4.1	3.5
Trade	151.3	147.9	162.4	169.0	182.6	178.8
%	-0.4	-2.3	9.8	4.1	8.0	-2.1
Finance, Insurance & Real Estate	190.7	203.3	212.7	218.4	226.5	225.9
%	10.9	6.6	4.6	2.7	3.7	-0.3
Community Business & Personal Service	335.8	365.1	386.6	422.8	441.0	448.1
%	9.9	8.7	5.9	9.4	4.3	1.6
Public Administration & Defense	221.9	216.5	223.3	231.2	235.4	233.9
%	3.3	-2.4	3.1	3.5	1.8	-0.7
ALL INDUSTRIES	1,371.8	1,448.6	1,500.9	1,587.7	1,632.0	1,651.3
%	4.5	5.6	3.6	5.8	2.8	1.2

Note: % = percentage change from previous year as calculated by the Conference Board.

Note: The sum of the industries listed above may not equal All Industries as not all industries are represented. *They all are if you include mining*

Source: Conference Board of Canada.

TABLE 19
PUBLIC AND PRIVATE INVESTMENT BY TYPE AND BY INDUSTRY
PRINCE EDWARD ISLAND (\$ MILLIONS)

Capital Expenditures by Industry	1985	1986	1987	1988	1989	1990
Primary Industries and Construction . . .	31.4	28.6	40.8	45.4	44.7	38.9
New Construction	8.8	8.8	12.8	16.1	13.3	13.7
New Machinery & Equipment	22.6	19.8	28.0	29.3	31.4	25.2
Manufacturing	23.3	16.2	10.8	17.8	12.0	57.4
New Construction	9.7	4.8	1.6	2.9	0.9	11.8
New Machinery & Equipment	13.6	11.4	9.2	14.9	11.1	45.6
Transportation	0.9	1.7	1.4	2.5	1.6	3.2
New Construction	0.1	0.6	0.3	0.5	0.2	0.3
New Machinery & Equipment	0.8	1.1	1.1	2.0	1.4	2.9
Communication	13.2	15.9	16.7	18.8	20.2	23.3
New Construction	3.5	3.0	4.4	5.5	5.6	7.0
New Machinery & Equipment	9.7	12.9	12.3	13.3	14.6	16.3
Miscellaneous Utilities	4.7	6.2	14.9	9.5	15.6	9.0
New Construction	4.0	5.8	11.2	7.8	12.7	7.2
New Machinery & Equipment	0.7	0.4	3.7	1.7	2.9	1.8
Trade	12.9	11.7	12.5	12.7	13.5	27.1
New Construction	5.8	3.4	2.6	3.8	3.8	10.2
New Machinery & Equipment	7.1	8.3	9.9	8.9	9.7	16.9
Finance	7.4	13.9	13.5	27.4	34.0	28.0
New Construction	4.0	10.5	9.6	22.1	27.9	22.3
New Machinery & Equipment	3.4	3.4	3.9	5.3	6.1	5.7
Commercial Service	13.4	23.8	22.7	23.5	41.4	29.5
New Construction	2.4	7.9	4.5	4.6	27.0	17.2
New Machinery & Equipment	11.0	15.9	18.2	18.9	14.4	12.3
Institutions	27.1	30.8	26.1	20.5	22.1	27.8
New Construction	24.0	28.5	22.9	17.7	16.1	23.1
New Machinery & Equipment	3.1	2.3	3.2	2.8	6.0	4.7
Government Departments	50.6	52.3	58.9	84.2	79.2	71.3
New Construction	43.1	40.8	49.6	75.8	64.1	64.3
New Machinery & Equipment	7.5	11.5	9.3	8.4	15.1	7.0
Housing	87.1	122.8	115.7	131.0	123.0	115.3
New Construction	87.1	122.8	115.7	131.0	123.0	115.3
New Machinery & Equipment	0.0	0.0	0.0	0.0	0.0	0.0
Total Capital Expenditures	272.0	323.9	334.0	393.3	407.3	430.8
New Construction	192.5	236.9	235.2	287.8	294.6	292.4
New Machinery & Equipment	79.5	87.0	98.8	105.5	112.7	138.4
Total Repair Expenditure	97.4	105.7	100.6	119.3	124.7	133.0
New Construction	51.9	56.8	47.1	64.6	66.8	67.2
New Machinery & Equipment	45.5	48.9	53.5	54.7	57.9	65.8
Total Capital and Repair	369.4	429.6	434.6	512.6	532.0	563.8
New Construction	244.4	293.7	282.3	352.4	361.4	359.6
New Machinery & Equipment	125.0	135.9	152.3	160.2	170.6	204.2

Note: 1985-1989 data are actual, 1990 data are preliminary actual.

Source: Statistics Canada, Catalogues 61-205, Private & Public Investment In Canada; 61-206, Private & Public Investment In Canada, Revised Intentions.

TABLE 20
ALL ITEMS CONSUMER PRICE INDEX
CHARLOTTETOWN - SUMMERSIDE
1986 = 100

	1985	1986	1987	1988	1989	1990	<i>1991 %</i>
January	96.3	99.2	101.6	105.2	108.6	114.1	<i>124.7</i>
February	97.1	99.8	102.0	106.0	109.0	114.9	<i>125.5</i>
March	97.0	99.7	102.4	106.4	109.7	115.4	<i>126</i>
April	97.5	99.4	102.9	106.7	110.0	116.4	<i>125.9</i>
May	97.6	99.4	102.8	106.9	111.0	116.4	<i>125.5</i>
June	98.1	99.1	103.4	107.2	111.6	116.9	<i>125.9</i>
July	98.7	100.0	104.2	107.8	112.4	117.2	<i>126.1</i>
August	98.8	100.5	104.2	108.5	112.1	117.7	<i>126.2</i>
September	99.3	100.4	104.3	108.3	113.0	118.2	
October	98.6	100.7	104.8	108.8	113.1	118.6	
November	98.7	101.0	105.1	108.7	113.8	119.2	
December	98.6	101.3	105.0	108.5	113.5	120.1	
Annual Averages	98.0	100.0	103.6	107.4	111.5	117.1	
% Change	3.7	2.1	3.5	3.7	3.8	5.0	<i>7.5%</i>

Note: The base year for the Consumer Price Index was updated from 1981 = 100 to 1986 = 100 in June 1990.

Note: The Consumer Price Index for each city measures price change from one time period to another within that specific city. Thus, while city C.P.I.'s show the movement of prices over time in each city, they do not indicate price level differences between cities or between cities and Canada.

Note: The Consumer Price Index for Prince Edward Island is equal to the Charlottetown - Summerside Consumer Price Index.

Source: Statistics Canada, Catalogue 62-001, The Consumer Price Index.

TABLE 21
ALL ITEMS CONSUMER PRICE INDEX
CANADA, 1986 = 100

	1985	1986	1987	1988	1989	1990	<u>1991</u>
January	94.1	98.3	102.1	106.3	110.9	117.0	125
February	94.7	98.6	102.6	106.7	111.6	117.7	125
March	94.9	98.9	103.0	107.3	112.2	118.1	125.5
April	95.3	99.0	103.5	107.6	112.5	118.1	125.7
May	95.5	99.5	104.1	108.3	113.7	118.7	126.1
June	96.1	99.6	104.4	108.5	114.3	119.2	126.7
July	96.4	100.4	105.1	109.1	115.0	119.8	126.8
August	96.5	100.7	105.2	109.4	115.1	119.9	
September	96.7	100.7	105.2	109.5	115.3	120.2	
October	97.0	101.2	105.6	110.1	115.7	121.2	
November	97.4	101.7	106.0	110.3	116.1	121.9	
December	97.8	101.9	106.1	110.3	116.0	121.8	
Annual Averages	96.0	100.0	104.4	108.6	114.0	119.5	
% Change	4.0	4.2	4.4	4.0	5.0	4.8	

Note: See notes in Table 20.

Source: Statistics Canada, Catalogue 62-001, The Consumer Price Index.

TABLE 22
CONSUMER PRICE INDEX CHARLOTTETOWN - SUMMERSIDE
ANNUAL AVERAGES OF MAJOR COMPONENTS, 1986 = 100

Year	Food	Housing	Clothing	Transportation	Health & Personal Care	Recreation Reading & Education	Tobacco & Alcohol	Energy(1)
1982	88.9	88.6	91.2	87.0	82.1	82.1	66.6	99.2
1983	90.2	93.2	94.8	91.8	87.0	87.8	75.5	105.1
1984	94.5	97.5	95.7	95.0	91.4	91.3	81.9	112.0
1985	96.6	101.3	96.9	98.9	96.0	94.9	88.9	116.4
1986	100.0	100.0	100.0	100.0	100.0	100.0	100.0	100.0
1987	105.0	101.9	102.6	102.3	104.9	105.7	108.2	98.5
1988	108.0	105.5	106.5	103.4	110.3	111.6	117.4	99.0
1989	112.1	108.1	110.1	106.6	115.0	116.6	130.7	96.5
1990	118.1	112.7	112.2	111.4	123.1	121.2	146.6	105.4

CONSUMER PRICE INDEX, CHARLOTTETOWN - SUMMERSIDE
YEAR OVER YEAR PERCENTAGE CHANGES OF MAJOR COMPONENTS

Year	Food	Housing	Clothing	Transportation	Health & Personal Care	Recreation Reading & Education	Tobacco & Alcohol	Energy(1)
1982	4.8	11.6	6.2	12.0	10.9	10.1	12.9	20.1
1983	1.5	5.2	3.9	5.5	6.0	6.9	13.4	5.9
1984	4.8	4.6	0.9	3.5	5.1	4.0	8.5	6.6
1985	2.2	3.9	1.3	4.1	5.0	3.9	8.5	3.9
1986	3.5	-1.3	3.2	1.1	4.2	5.4	12.5	-14.1
1987	5.0	1.9	2.6	2.3	4.9	5.7	8.2	-1.5
1988	2.9	3.5	3.8	1.1	5.1	5.6	8.5	0.5
1989	3.8	2.5	3.4	3.1	4.3	4.5	11.3	-2.5
1990	5.4	4.3	1.9	4.5	7.0	3.9	12.2	9.2

Note: See notes in Table 20.

Note (1): Energy is not a component of the Consumer Price Index, it is a special aggregate.

Source: Statistics Canada, Catalogue 62-001, The Consumer Price Index.

TABLE 23
CONSUMER PRICE INDEX, CANADA
ANNUAL AVERAGES OF MAJOR COMPONENTS, 1986 = 100

Year	Food	Housing	Clothing	Transportation	Health & Personal Care	Recreation Reading & Education	Tobacco & Alcohol	Energy(1)
1982	84.6	84.7	88.9	84.5	83.4	83.4	67.0	89.7
1983	87.7	90.4	92.5	88.7	89.2	88.8	75.5	96.7
1984	92.5	93.8	94.7	92.5	92.7	91.8	81.6	102.0
1985	95.2	97.1	97.3	96.9	95.9	95.6	89.4	107.7
1986	100.0	100.0	100.0	100.0	100.0	100.0	100.0	100.0
1987	104.4	104.0	104.2	103.6	105.0	105.4	106.7	102.6
1988	107.2	108.6	109.6	105.6	109.6	111.3	114.6	103.2
1989	111.1	114.3	114.1	111.1	114.4	116.2	125.2	106.8
1990	115.7	119.5	117.3	117.3	120.0	121.3	136.1	117.4

CONSUMER PRICE INDEX CANADA
YEAR OVER YEAR PERCENTAGE CHANGES OF MAJOR COMPONENTS

Year	Food	Housing	Clothing	Transportation	Health & Personal Care	Recreation Reading & Education	Tobacco & Alcohol	Energy(1)
1982	7.2	12.5	5.6	14.0	10.6	8.6	15.5	19.8
1983	3.7	6.7	4.0	5.0	7.0	6.5	12.7	7.8
1984	5.5	3.8	2.4	4.3	3.9	3.4	8.1	5.5
1985	2.9	3.5	2.7	4.8	3.5	4.1	9.6	5.6
1986	5.0	3.0	2.8	3.2	4.3	4.6	11.9	-7.1
1987	4.4	4.0	4.2	3.6	5.0	5.4	6.7	2.6
1988	2.7	4.4	5.2	1.9	4.4	5.6	7.4	0.6
1989	3.6	5.2	4.1	5.2	4.4	4.4	9.2	3.5
1990	4.1	4.5	2.8	5.6	4.9	4.4	8.7	9.9

Note: See notes in Table 20.

Note (1): Energy is not a component of the Consumer Price Index, it is a special aggregate.

Source: Statistics Canada, Catalogue 62-001, The Consumer Price Index.

TABLE 24
CANADIAN INDUSTRIAL PRODUCT PRICE INDEXES
FOR SELECTED COMMODITIES
1986 = 100

Year	ANNUAL AVERAGE					
	Meat, Fish & Dairy Products	Dairy Products	Fish Products	Potato Products Frozen	Lumber, Sawmill, Other Wood Products	Total All Commodities
1986	100.0	100.0	100.0	100.0	100.0	100.0
1987	104.4	102.8	113.8	103.8	102.4	102.8
1988	104.9	106.2	115.9	107.3	104.3	107.2
1989	105.8	109.8	109.6	117.3	108.3	109.4
1990 (p)	108.8	113.6	102.9	124.1	107.7	109.7
1990/1989 % Change	2.8	3.4	-6.1	5.8	-0.5	0.2
1990 MONTHLY						
January.....	106.8	112.1	103.7	122.4	108.1	108.7
February.....	106.9	112.4	103.5	122.4	109.5	109.5
March.....	107.2	112.4	102.7	122.4	110.2	109.3
April.....	107.6	112.5	103.6	122.4	109.7	109.1
May.....	109.1	112.6	101.5	123.1	109.9	109.6
June.....	109.5	112.8	100.9	123.1	109.3	109.4
July.....	109.2	112.6	102.1	126.3	108.6	109.1
August.....	109.3	113.4	102.0	126.3	107.4	109.2
September.....	109.5	115.1	102.0	126.3	106.9	110.2
October.....	110.1	115.4	103.2	124.9	104.7	110.5
November.....	110.0	115.8	104.8	124.9	104.0	110.7
December.....	109.8	115.9	105.1	124.9	103.8	110.7

p: preliminary

Note: The Industrial Product Price Index (IPPI) measures price changes for major commodities sold by Canadian manufacturers.

Note: The base year for the Industrial Product Price Index was updated from 1981 = 100 to 1986 = 100 in June 1990.

Source: Statistics Canada Catalogue 62-011, Industry Price Indexes.

TABLE 25
VALUE OF RETAIL TRADE
PRINCE EDWARD ISLAND

(1) Old Survey Method	Retail Sales Total All Stores (\$ Thousands)	Percentage Change	Department Stores Sales (\$ Thousands)	Percentage Change
1983	471,714	14.4	67,431	11.7
1984	520,721	10.4	70,304	4.3
1985	547,510	5.1	69,218	-1.5
1986	577,327	5.4	71,232	2.9
1987	640,591	11.0	81,762	14.8
1988	703,536	9.8	88,843	8.7
1989	731,946	4.0	89,703	1.0

(1) New Survey Method	Retail Sales Total All Stores (\$ Millions)	Percentage Change	Department Store Type Merchandise (\$ Millions)	Percentage Change
1989	800	na	296	na
1990 p	796	-0.5	298	0.7

p: preliminary

na: not available

Note (1): The Monthly Retail Trade Survey has been redesigned and is now based on a new sample. The new survey has been conducted in "parallel" to the old survey for the January 1989 to December 1989 period. Estimates are available for sixteen trade groups for Canada and total retail sales for the provinces and territories. In addition, department store type merchandise totals are published for each province and territory.

Source: Statistics Canada Catalogue 63-005, Retail Trade; 63-004 Department Store Monthly Sales, and Cansim Main Base.

1.107 *202*
Trend B 1984 *9/1/89*
Adjust
800 *x .96*
731.9 *.958*

R.S.
Retail S.

1.04714

XII TRADE .LST
.XII
XII TRADE .WK1
.CHK

35

Extracted

Retail .M.

0658180

New
00658180

(old) *0 650262*

1981-91
Canada

TABLE 27
INTERNATIONAL EXPORTS FROM PRINCE EDWARD ISLAND
BY PRINCIPAL TRADING AREAS (\$'000)
1985 - 1990

	1985	1986	1987	1988	1989	1990p
United States	73,530	87,537	106,398	88,039	105,786	101,926
Venezuela	5,108	6,974	10,575	8,560	4,126	7,286
France	2,486	3,076	6,537	6,517	8,111	7,745
Trinidad-Tobago	4,203	7,096	6,513	4,848	4,223	5,174
Japan	2,556	11,247	8,435	4,721	6,391	5,623
Italy	1,244	896	1,603	4,630	958	3,745
Other Countries	24,116	29,369	21,259	22,764	33,394	36,069
Total Domestic Exports	113,243	146,195	161,320	140,079	162,989	167,568

BY MAJOR COMMODITIES (\$'000)
1985 - 1990

	1985	1986	1987	1988	1989	1990p
Live Animals	1,369	271	320	452	475	942
Food, Feed, Beverage & Tobacco	95,370	124,357	135,626	122,300	139,063	146,353
Crude Material	4,121	4,230	5,210	3,487	6,763	6,431
Fabricated Materials Inedible	3,195	1,421	3,413	1,264	4,521	3,452
End Products Inedible	8,571	15,795	16,705	12,515	12,117	9,059
Special Transactions Trade	104	73	43	59	49	1,328
Other	513	48	3	0	0	0
Total Domestic Exports	113,243	146,195	161,320	140,079	162,989	167,568

p: preliminary

Note: Totals may not equal the sum of components due to rounding.

Note: The export data was converted to the Harmonized Commodity and Coding Description (H.S. Based) in 1988. Therefore users should use caution when trying to compare 1988 and 1989 data to previous years. *1989 and 1990 are also different due to treatment transportation & insurance charges.*

Source: Statistics Canada, special tabulations from Catalogues 65-003, Exports By Country (H.S. Based); 65-004, Exports By Commodity.

(4240)
Coms, Petigons
 270056

TABLE 28
PERSONAL INCOME TAX RETURNS, PRINCE EDWARD ISLAND
INCOME AND TAXES PAID, 1984 - 1988

	1984	1985	1986	1987	1988
All Returns (no.)	72,182	70,823	75,830	78,470	81,460
Total Income (\$'000)	989,600	1,044,300	1,146,900	1,257,900	1,408,235
Average Income (\$)	13,710	14,745	15,125	16,030	17,287
Taxable Returns (no.)	52,614	52,849	56,670	58,900	57,520
Total Income (\$'000)	927,900	987,100	1,085,900	1,192,100	1,301,365
Average Income (\$)	17,636	18,678	19,162	20,239	22,625
Federal Tax (\$'000)	77,500	90,500	110,000	127,200	138,424
Provincial Tax (\$'000)	48,300	52,000	58,500	70,700	78,076
Total Tax (\$'000)	125,800	142,600	168,500	197,800	216,501
Average Tax (\$)	2,391	2,698	2,973	3,358	3,764

ALL RETURNS BY COUNTIES AND SELECTED LOCALITIES, 1988 (1)

	All Returns			Taxable Returns			
	Number of Returns	Average Income (\$)	Total Income (\$'000)	Number of Returns	Average Income (\$)	Total Income (\$'000)	Total Tax Payable (\$'000)
Kings	11,700	16,035	187,613	8,600	20,165	173,415	26,495
Prince	28,510	15,901	453,344	20,290	20,589	417,756	64,556
Queens	41,110	18,907	777,260	29,770	24,397	726,291	125,444
Total P.E.I.	81,550	17,429	1,421,352	58,820	22,446	1,320,262	216,927
Charlottetown (2)	21,610	19,996	432,103	15,490	26,070	403,823	73,051

Note (1): All Returns consists of Taxable Returns (returns with positive taxable income) plus those returns filed with zero taxable income. The data presented in this section of Table 28 represent all taxfilers. Data may vary as other information are based on a statistical sample.

Note (2): Charlottetown is defined by the boundaries used in the 1981 Census of Population.

Note: Totals may differ between tables due to rounding and confidentiality adjustments.

Source: Revenue Canada Taxation, Taxation Statistics.

TABLE 29
PERSONAL INCOME TAX RETURNS, 1988 TAXATION YEAR,
ALL RETURNS BY INCOME, PRINCE EDWARD ISLAND

Taxable Returns	Number	%	Total Income (\$'000)	%	Taxable Income (\$'000)	%	Total Tax (\$'000)	%
Under \$5,000	20	0.0	28	0.0	27	0.0	5	0.0
\$5,000 to 6,000	0	0.0	0	0.0	0	0.0	0	0.0
\$6,000 to 8,000	3,340	5.8	23,848	1.8	23,727	2.0	785	0.4
\$8,000 to 10,000	4,940	8.6	44,661	3.4	44,055	3.6	3,170	1.5
10,000 to 15,000	12,710	22.1	159,217	12.2	155,482	12.8	16,707	7.7
15,000 to 20,000	11,030	19.2	193,594	14.9	186,768	15.4	25,552	11.8
20,000 to 25,000	8,060	14.0	179,465	13.8	170,190	14.1	26,895	12.4
25,000 to 30,000	5,540	9.6	151,716	11.7	141,694	11.7	24,435	11.3
30,000 to 40,000	6,580	11.4	227,064	17.4	207,934	17.2	41,900	19.4
40,000 to 50,000	2,920	5.1	129,555	10.0	117,510	9.7	27,727	12.8
50,000 and over	2,390	4.2	192,217	14.8	163,019	13.5	49,324	22.8
Grand Total	57,520	100.0	1,301,365	100.0	1,210,406	100.0	216,501	100.0

All Returns	Number	%	Total Income (\$'000)	%	Taxable Income (\$'000)	%	Total Tax (\$'000)	%
Under \$5,000	14,560	17.9	30,723	2.2	31,891	2.4	5	0.0
\$5,000 to 6,000	2,870	3.5	15,718	1.1	15,651	1.2	0	0.0
\$6,000 to 8,000	6,170	7.6	43,211	3.1	42,630	3.2	785	0.4
\$8,000 to 10,000	6,840	8.4	61,657	4.4	60,738	4.6	3,170	1.5
10,000 to 15,000	14,170	17.4	176,483	12.5	171,899	13.1	16,707	7.7
15,000 to 20,000	11,250	13.8	197,194	14.0	189,537	14.4	25,552	11.8
20,000 to 25,000	8,100	9.9	180,433	12.8	170,861	13.0	26,895	12.4
25,000 to 30,000	5,560	6.8	152,311	10.8	142,190	10.8	24,435	11.3
30,000 to 40,000	6,610	8.1	228,044	16.2	208,444	15.9	41,900	19.4
40,000 to 50,000	2,930	3.6	130,029	9.2	117,578	8.9	27,727	12.8
50,000 and over	2,390	2.9	192,432	13.7	163,089	12.4	49,324	22.8
Grand Total	81,460	100.0	1,408,235	100.0	1,314,505	100.0	216,501	100.0

Note: See general notes on Table 28.

Source: Revenue Canada Taxation, Taxation Statistics.

TABLE 30
PERSONAL INCOME TAX RETURNS, 1988
ALL RETURNS BY OCCUPATION FOR PRINCE EDWARD ISLAND

	Number	Total Income (\$'000)	Average Income \$	Taxable Income (\$'000)	Total Tax (\$'000)
Employees of Businesses	26,260	453,401	17,266	429,785	72,740
Employees of Institutions	4,800	95,976	19,995	89,355	14,969
Teachers and Professors	740	27,442	37,084	24,791	5,709
Federal Government Employees	2,530	77,578	30,663	71,383	15,896
Provincial Government Employees	5,710	142,291	24,920	131,288	25,619
Municipal Government Employees	860	15,440	17,953	14,396	2,438
Armed Forces	920	31,961	34,740	29,489	6,332
Federal Crown Corporations	1,070	29,768	27,821	27,484	5,487
Provincial Crown Corporations	300	7,490	24,967	7,008	1,252
Unclassified Employees	3,910	47,698	12,199	45,603	5,976
TOTAL EMPLOYEES	47,080	929,046	19,733	870,583	156,419
Farmers	2,090	38,782	18,556	35,260	3,821
Fishermen	2,140	56,493	26,399	53,358	9,066
TOTAL FARMERS AND FISHERMEN	4,230	95,275	22,524	88,618	12,887
Accountants	50	2,950	59,000	2,505	704
Medical Doctors and Surgeons	130	15,240	117,231	12,449	4,404
Dentists	30	2,400	80,000	1,996	646
Lawyers and Notaries	50	3,909	78,180	3,443	1,110
Engineers and Architects	10	435	43,500	384	82
Entertainers and Artists	50	732	14,640	634	115
Other Professionals	150	5,503	36,687	4,596	1,189
TOTAL PROFESSIONALS	470	31,167	66,313	26,007	8,250
Salesmen	140	2,424	17,314	2,211	358
Forestry Operators	20	209	10,450	198	0
Manufacturers	110	1,199	10,900	1,117	146
Construction	290	5,660	19,517	5,362	851
Public Util. & Transport Operators	390	6,770	17,359	6,364	908
Wholesale Traders	10	285	28,500	263	49
Retail Traders	880	13,405	15,233	12,514	2,008
Insurance Agency Operators	10	446	44,600	419	101
Real Estate Agency Operators	0	0	0	0	0
Recreational Services Operators	0	0	0	0	0
Business Services Operators	20	345	17,250	296	48
Other Services Operators	1,080	13,883	12,855	12,811	1,857
Other Business Proprietors	10	225	22,500	0	0
TOTAL BUSINESS PROPRIETORS	2,820	42,974	15,239	40,036	6,120
Investors	3,060	76,581	25,026	61,570	10,382
Property Owners	390	7,815	20,038	7,027	1,356
TOTAL INVESTMENT	3,450	84,397	24,463	68,598	11,737
Pensioners	9,110	108,014	11,857	105,938	8,508
Unclassified	14,150	114,939	8,123	112,514	12,223
GRAND TOTAL	81,460	1,408,235	17,287	1,314,505	216,501

Note: For the breakdowns with less than ten non-taxable filers, the number of taxfilers in that breakdown is rounded to the nearest ten for the all-returns table and the corresponding taxable-returns table. The appropriate subtotal and total counts are edited when necessary to guard against residual disclosure.

Source: Revenue Canada Taxation, Taxation Statistics.

TABLE 31
VALUE OF BUILDING PERMITS BY TYPE
PRINCE EDWARD ISLAND 1984 - 1990

Year	Total (\$'000)	Residential (\$'000)	Non-Residential (\$'000)
1984	77,760	37,127	40,633
1985	87,399	43,692	43,707
1986	106,865	65,897	40,968
1987	123,557	72,028	51,529
1988	173,138	86,962	86,176
1989	148,272	73,820	74,452
1990*	153,783	71,693	82,090

Note: *1990 figures are for January to November.

Source: Statistics Canada, Catalogue 64-001, Building Permits.

TABLE 32
NUMBER OF BUILDING PERMITS BY TYPE OF DWELLING
PRINCE EDWARD ISLAND 1984 - 1990

Year	Single Family Dwelling	Semi- detached	Apartment and Row Housing Units	Total
1984	490	56	192	738
1985	554	80	223	857
1986	696	88	334	1,118
1987	730	96	189	1,015
1988	786	66	357	1,209
1989	598	32	391	1,021
1990	581	50	285	916

Source: Prince Edward Island Housing Corporation.

TABLE 33
NUMBER OF BUILDING PERMITS BY COUNTY
PRINCE EDWARD ISLAND

Year	Prince County	Queens County	Kings County	Total P.E.I.
1982	133	188	98	419
1983	196	424	124	744
1984	167	445	126	738
1985	272	473	112	857
1986	271	722	125	1,118
1987	337	555	123	1,015
1988	358	748	103	1,209
1989	183	730	108	1,021
1990	169	642	105	916
1990/1989 % Change	-7.7	-12.1	-2.8	-10.3
1990 Monthly				
January	3	8	4	15
February	4	22	3	29
March	8	82	5	95
April	26	73	8	107
May	34	51	10	95
June	16	50	8	74
July	11	57	15	83
August	17	39	5	61
September	19	37	10	66
October	14	64	10	88
November	0	143	1	144
December	17	16	26	59

Source: Prince Edward Island Housing Corporation.

TABLE 34
HOUSING STARTS, COMPLETIONS AND UNDER CONSTRUCTION
BY YEAR AND QUARTER FOR PRINCE EDWARD ISLAND
1986-1990

Year & Quarter	Starts	Completions	Under Construction
1986	1,110	1,176	*
1st	122	246	285
2nd	430	159	556
3rd	310	294	590
4th	248	477	362
1987	933	943	*
1st	89	184	251
2nd	396	132	517
3rd	305	294	528
4th	143	333	338
1988	1,151	993	*
1st	107	158	286
2nd	427	187	528
3rd	328	234	622
4th	289	414	497
1989	815	927	*
1st	83	255	322
2nd	320	167	474
3rd	228	262	441
4th	184	243	380
1990	762	683	*
1st	82	112	350
2nd	141	224	269
3rd	280	221	329
4th	259	126	463

Note: * Figure is not calculable.

Source: Statistics Canada Catalogue 64-002, Housing Starts & Completions.

1991 1st
 25 } - 290 } 436
 265 }
 146 }

TABLE 35
HOUSING STARTS BY TYPE OF UNIT
PRINCE EDWARD ISLAND
1975 TO 1990

Year	Total Starts	Single-Detached	Semi-detached and Duplex	Row Houses	Apartments and Other
1975	847	733	22	0	92
1976	842	746	59	0	37
1977	824	577	16	10	221
1978	1,210	990	45	51	124
1979	1,068	801	18	28	221
1980	475	348	33	0	94
1981	203	201	2	0	0
1982	248	179	0	0	69
1983	673	380	30	12	251
1984	643	416	44	5	178
1985	788	559	50	6	173
1986	1,110	783	74	9	244
1987	933	699	88	0	146
1988	1,151	704	55	69	323
1989	815	456	32	8	319
1990	762	483	16	0	263

Note: Single-Detached comprises only one-dwelling units completely separated on all sides.

- : Semi-detached includes each one of two dwellings separated by a common wall extending from ground to roof, or by a garage. Linked houses were included in this category prior to 1982, but are now included with single-detached. Similarly, duplexes which are described as double dwellings, one above the other, are now included with the category "apartments and other".
- : Row comprises only single-attached houses in a row of three or more dwellings. Row duplexes are not included in the "row" category, but are classified to "apartments and other".
- : Apartment and Other includes dwelling units found in a wide range of structures such as: duplexes, double-duplexes, triplexes, row-duplexes, apartments proper and dwellings over, or at the back of, a store or other non-residential structure.

Source: Statistics Canada Catalogue 64-002, Housing Starts and Completions and Canada Mortgage and Housing Corporation.

TABLE 36
FARM CASH RECEIPTS
PRINCE EDWARD ISLAND
(\$'000)

	1985	1986	1987	1988	1989	1990p
Grains (1)	3,946	3,934	3,234	4,575	5,281	4,148
Potatoes . <i>00209776</i> ..	53,777	57,754	79,935	63,125	119,046	114,077
Fruits	1,296	2,064	2,199	2,005	1,626	1,983
Vegetables	5,066	4,456	4,695	5,388	5,643	5,034
Tobacco . . . <i>00209780</i> ..	11,116	10,021	12,536	11,322	10,794	6,311
Other Crops (2)	1,843	2,332	2,083	1,927	2,132	2,110
Total Crops . . <i>00209722</i> ..	77,044	80,561	104,682	88,342	144,522	133,663
Cattle & Calves . <i>00209787</i> ..	25,692	27,972	28,661	27,241	26,675	30,884
Hogs . . . <i>00209789</i> ..	21,606	25,363	26,489	21,706	21,713	24,555
Sheep & Lambs	248	284	229	231	223	264
Dairy Products . <i>00209792</i> ..	27,919	30,552	31,894	37,095	37,216	37,839
Poultry	991	1,322	1,009	2,067	2,386	3,037
Eggs	2,828	2,941	2,915	2,904	3,189	2,849
Other Livestock & Products . . .	2,419	1,468	3,847	2,523	2,055	1,462
Total Livestock & Products . . .	81,703	89,902	95,044	93,767	93,457	100,890
Crop Insurance Payments . . .	3,682	2,595	3,200	2,623	954	2,387
Agricultural Stabilization Act <i>00209786</i>						
Price Stabilization	86	88	53	4,540	678	6
Tripartite plans	0	26	6	386	4,285	695
Provincial stabilization programs .	2,895	926	466	4,955	3,792	3,382
Dairy subsidy	5,090	5,331	5,153	5,422	5,243	4,929
Other Cash Receipts (3)	775	6,059	3,959	4,419	1,226	3,003
Total Cash Receipts	171,275	185,488	212,563	204,454	254,157	248,955

00209770
p: preliminary

Note (1): Wheat, Oats and Barley

Note (2): Floriculture and nursery are included in other crops.

Note (3): "Other Cash Receipts" include payments made to producers under various federal, provincial and joint federal/provincial programs.

Source: Statistics Canada Catalogue 21-001, Farm Cash Receipts; and 21-603E, Agriculture Economic Statistics.

<: \roy \fer. prn

TABLE 37
INCOME OF FARM OPERATORS FROM FARMING OPERATIONS
PRINCE EDWARD ISLAND
(\$'000)

Year	(1) Cash Receipts from Farm Production	(2) Income in Kind	(3) Realized Gross Income	(4) Operating & Depreciation Charges	(5) Realized Net Income	(6) Value of Inventory Changes	(7) Total Net Income
1981	189,578	2,898	192,476	132,299	60,177	20,785	80,962
1982	161,900	2,373	164,273	142,113	22,160	788	22,948
1983	172,332	2,403	174,735	149,379	25,356	-4,933	20,423
1984	191,156	2,417	193,573	155,713	37,860	17,790	55,650
1985	171,275	2,357	173,632	160,421	13,211	1,174	14,385
1986	185,488	2,752	188,240	162,263	25,977	-3,877	22,100
1987	212,563	2,797	215,360	164,501	50,859	-7,965	42,894
1988	204,454	2,747	207,201	173,578	33,623	8,845	42,468
1989	254,157	2,742	256,899	182,813	74,086	-2,738	71,348

Note: Realized Gross Income (3) = (1 + 2)

Realized Net Income (5) = (3-4)

Total Net Income (7) = (3 + 6) - 4

Note: 1990 data was not available at time of publication.

Source: Statistics Canada Catalogue 21-603E, Agriculture Economic Statistics.

TABLE 38
CAPITAL VALUE OF ALL FARMS IN PRINCE EDWARD ISLAND 1983 - 1989
(\$ MILLIONS)

Year	(1) Total	Land and Buildings	(2) Implements & Machinery	(3) Livestock & Poultry
1983	713	479	158	75
1984	720	480	164	76
1985	744	505	165	73
1986	737	490	171	76
1987	732	486	167	79
1988	729	482	169	78
1989 p	752	507	167	79

p: preliminary

1: All items have been rounded to \$ million and thus totals may not add due to rounding.

2: Automobiles and motor trucks are included in this area.

3: Livestock and poultry includes the value of animal and fur farms.

Source: Statistics Canada Catalogue 21-603E, Agriculture Economic Statistics.

TABLE 39
INDEX OF FARM PRODUCTION
PRINCE EDWARD ISLAND 1981 = 100

Year	Index of Crop Production	Index of Livestock Production	Index of Farm Production
1980	70.2	99.0	81.4
1981	100.0	100.0	100.0
1982	97.8	105.5	100.8
1983	87.6	106.2	94.8
1984	104.4	104.7	104.5
1985	93.2	104.4	97.5

Note: The time base for this table has been set to 1981 = 100 while the table in the Annual Statistical Review prior to 1984 was set to 1971 = 100. Years prior to 1980 can be viewed in Statistics Canada publication 21-203.

Note: ~~1986 data not available at time of publication.~~

Discontinued.

Source: Statistics Canada Catalogue 21-603E, Agriculture Economic Statistics.

TABLE 40
FARM PRODUCT PRICE INDEX, PRINCE EDWARD ISLAND
1986 = 100

Year	Crops	Livestock and Animal Products	Total
1983	112.2	88.5	99.3
1984	131.2	94.3	111.1
1985	105.1	93.2	98.6
1986	100.0	100.0	100.0
1987	137.8	105.1	119.9
1988	119.2	102.5	110.1
1989	167.7	103.4	132.6
1990 p	150.1	110.9	128.7
1990/1989 % Change	-10.5	7.3	-2.9
1990 Monthly			
January	151.4	105.4	126.3
February	160.4	106.3	130.8
March	178.0	110.9	141.4
April	175.5	109.5	139.5
May	152.5	111.5	130.1
June	156.5	113.1	132.8
July	156.1	112.0	132.0
August	160.0	111.0	133.3
September	129.5	116.3	122.3
October	127.5	111.5	118.8
November	125.3	113.3	118.8
December	128.5	110.3	118.5

p: preliminary

Note: The base year for the Farm Product Price Index was updated from 1981 = 100 to 1986 = 100 in June 1990.

Source: Statistics Canada Catalogue 62-003, Farm Product Price Index.

TABLE 41
COMPARISON OF SELECTED CENSUS FARM DATA
PRINCE EDWARD ISLAND, 1976, 1981 & 1986

	1976	1981	1986
Total Number of Census Farms	3,677	3,154	2,833
Total Farm Population	15,790	12,015	10,275
Total Land Area (acres)	1,399,040	1,399,040	1,399,040
Area in Census Farms (acres)	731,035	699,367	673,196
Use of Farm Lands (acres)			
Improved Land	503,558	500,853	460,399
Cropland (1)	391,534	391,118	386,715
Pasture	95,787	89,521	55,899
Other	16,237	20,214	17,785
Unimproved Land	227,477	198,514	212,797
Woodland	184,471	161,697	151,225
Other	43,006	36,817	61,572
Total Capital Value (\$)	326,480,636	699,470,045	738,631,854
Value of Land and Buildings (\$)	218,193,757	478,844,864	489,544,771
Value of Machinery & Equipment (\$)	75,180,649	148,971,254	170,804,062
Value of Livestock & Poultry (\$)	33,106,230	71,653,927	78,283,021

1: Cropland includes the total area of all field crops, plus the acres of fruits, vegetables, green-house, mushroom houses and nursery products.

Note: The 1986 Census defines a census farm as a farm, ranch or other agricultural holding with sales of agricultural products of \$250 or more during the 12 months period prior to the Census. Operations which anticipated sales of \$250 or more in 1981 were also included. Comparisons between 1986 data and previous censuses are made in this table and the next three tables. The 1976 data refers to census farms with sales of \$1,200 or more during the year 1975.

Source: Statistics Canada 1981 Census of Canada, Catalogue 92-901 and 1986 Census of Canada, Catalogue 94-129, Population: Canada, provinces, urban size groups, rural non-farm and rural farm acres. Statistics Canada 1986 Census of Agriculture, Catalogue 96-104, Prince Edward Island.

TABLE 42
CENSUS FARM DATA CLASSIFIED BY SALES CLASS
PRINCE EDWARD ISLAND, 1976, 1981 & 1986

Total Value of Agricultural Products Sold	1976		1981		1986	
	Number of Farms	%	Number of Farms	%	Number of Farms	%
\$250,000 and over]			82	2.6	152	5.4
\$100,000 - 249,999]	-- 149	4.0	299	9.5	401	14.2
\$50,000 - 99,999	224	6.1	414	13.1	433	15.3
\$25,000 - 49,999	367	10.0	473	15.0	422	14.9
\$10,000 - 24,999	727	19.8	569	18.0	496	17.5
\$5,000 - 9,999	543	14.8	386	12.2	292	10.3
\$2,500 - 4,999	514	14.0	362	11.5	262	9.2
Under \$ 2,500	1,146	31.1	569	18.1	375	13.2
Institutional Farms	<u>7</u>	<u>0.2</u>	<u>(1)</u>	<u>-</u>	<u>(1)</u>	<u>-</u>
Total Number of Farms	3,677	100.0	3,154	100.0	2,833	100.0

1: In 1981 and 1986 all Institutional farms are included in their specific class. See note in Table 38 for definitions.

Source: Statistics Canada 1986 Census of Agriculture, Catalogue 96-104, Prince Edward Island;
 Statistics Canada 1981 Census of Agriculture, Catalogue 96-903, Prince Edward Island.

TABLE 43
FARMS WITH SALES OF \$2,500 OR MORE
CLASSIFIED BY TYPE OF PRODUCT
PRINCE EDWARD ISLAND 1976, 1981 & 1986

Product Type	1976		1981		1986	
	Number of Farms	%	Number of Farms	%	Number of Farms	%
Dairy	846	33.5	768	29.7	584	23.7
Cattle	334	13.2	547	21.2	652	26.5
Hogs	216	8.6	255	9.9	221	9.0
Poultry	19	0.8	26	1.0	28	1.1
Wheat	13	0.5	5	0.2	4	0.1
Small Grains (excluding Wheat Farms)	126	5.0	85	3.3	90	3.7
Field Crops, other than Small Grains	471	18.7	462	17.9	474	19.3
Fruit and Vegetables	30	1.2	53	2.0	60	2.5
Miscellaneous Specialty	21	0.8	88	3.4	149	6.1
Livestock Combination	319	12.6	204	7.9	127	5.2
Field Crop Combination	77	3.0	48	1.8
Other Combination	52	2.1	44	1.7	69	2.8
Total	2,524	100.0	2,585	100.0	2,458	100.0

.. : not available

Source: Statistics Canada 1986 Census of Agriculture, Catalogue 96-104, Prince Edward Island.
 Statistics Canada 1981 Census of Agriculture, Catalogue 96-903, Prince Edward Island.

TABLE 44
SELECTED 1986 CENSUS OF AGRICULTURE STATISTICS
BY COUNTY, PRINCE EDWARD ISLAND

	Prince County	Kings County	Queens County	P.E.I. Total
Total Number of Farms	992	520	1,321	2,833
Total Area of Farms (acres)	256,201	140,817	276,178	673,196
Total Improved Land Area (acres)	182,338	80,056	198,005	460,399
Type of Organization				
Individual or Family Farm	769	416	1,093	2,278
Partnership.				
With written agreement	56	26	92	174
Without written agreement.	80	37	80	197
Legally Constituted Company				
Family	76	33	45	154
Other (1)	5	8	6	19
Other Type (2)	6	0	5	11
Total All Types.	992	520	1,321	2,833

Note 1: A legally constituted company with most of the shares owned by some other person(s) or business.

Note 2: Farms operated by institutions, community pastures, lands operated privately for an estate or trust company, Hutterite colonies and co-operative farms were included in "other" type of organization.

Source: Statistics Canada 1986 Census of Agriculture, Catalogue 96-104, Prince Edward Island.

TABLE 45
ESTIMATES OF PRIMARY FOREST PRODUCTION*
PRINCE EDWARD ISLAND
CUBIC METRES (000'S)

	1986	1987	1988	1989	1990
Logs and Bolts (1)	67	86	91	106	115
Pulpwood	41	55	46	66	65
Other Round Wood	28	28	28	28	28
Total Industrial Wood	136	169	165	200	208
Fuelwood	288	310	310	216	216
Fuel Chips (2)	8	20	35	35	30
Total Production	432	499	510	451	454
Note (1): Includes some pulpwood.		4.3	4.2	3.4	3.6

Note (2): Fuel chips were converted from green tonnes to cubic metres; 1 green tonne = 1.2 cubic metres.

Source: Prince Edward Island Department of Energy and Forestry, Forestry Division.

TABLE 46
FISH LANDINGS AND VALUE, PRINCE EDWARD ISLAND
(MILLIONS)

Year	Groundfish		Pelagic & Estuarial		Lobster & Shellfish*		Irish Moss		Total	
	Weight Lbs.	Value \$	Weight Lbs.	Value \$	Weight Lbs.	Value \$	Weight Lbs.	Value \$	Weight Lbs.	Value \$
1983	45.0	4.9	20.7	3.5	21.9	34.3	28.7	1.4	116.3	44.1
1984	41.6	4.5	15.6	3.3	21.6	28.3	34.7	1.7	113.5	37.8
1985	34.2	4.8	20.3	3.6	26.6	40.9	38.4	2.5	119.5	51.9
1986	30.1	5.6	33.9	4.8	31.4	55.0	27.8	1.8	123.2	67.2
1987	28.4	7.5	34.0	4.9	29.8	58.4	30.6	2.1	122.8	73.0
1988	30.4	4.6	29.2	4.3	33.9	66.7	33.1	2.6	126.6	78.3
1989	37.3	6.0	18.3	3.2	36.6	60.2	32.7	3.3	124.8	72.6
1990 p	43.4	6.5	33.3	4.3	37.6	52.6	32.4	3.4	146.8	66.8

p: Preliminary

Note: Components may not total due to rounding.

* Shellfish includes Snow Crab landings by New Brunswick vessels.
 Prince Edward Island total 2.9 million lbs. in 1986 and 1.28 million in 1987.

Source: Department of Fisheries and Oceans, compiled by Prince Edward Island Department of Fisheries and Aquaculture.

TABLE 47
PRINCE EDWARD ISLAND
LOBSTER LANDINGS STATISTICS COMPARISON
(TOTAL POUNDS)

Statistical Districts	1985	1986	1987	1988	1989	1990 p
88	3,004,750	3,783,160	4,016,549	5,103,172	4,714,639	5,764,016
87	3,145,782	5,314,338	5,455,378	6,226,926	5,873,165	5,993,613
96	304,333	391,446	401,677	710,609	480,595	574,146
86	431,109	643,493	653,827	651,707	594,805	545,985
95	791,427	978,204	1,008,997	1,115,903	1,029,253	1,194,774
85	181,333	265,190	267,211	333,170	255,211	280,738
93	835,950	868,964	967,595	1,670,027	1,372,046	1,165,542
83	1,849,182	1,577,310	1,345,072	1,048,363	973,285	934,726
92	1,819,800	2,113,058	2,101,634	1,879,421	2,508,383	2,976,911
82	2,654,715	2,392,470	2,649,572	3,255,835	3,450,902	3,021,411
Total Pounds	15,018,381	18,327,633	18,867,512	21,995,133	21,252,284	22,451,862
Dollar Value	33,591,000	44,494,234	49,532,000	56,128,893	46,058,302	40,348,000

p: preliminary

1.80 2.46

Source: Department of Fisheries and Oceans, compiled by Prince Edward Island Department of Fisheries and Aquaculture.

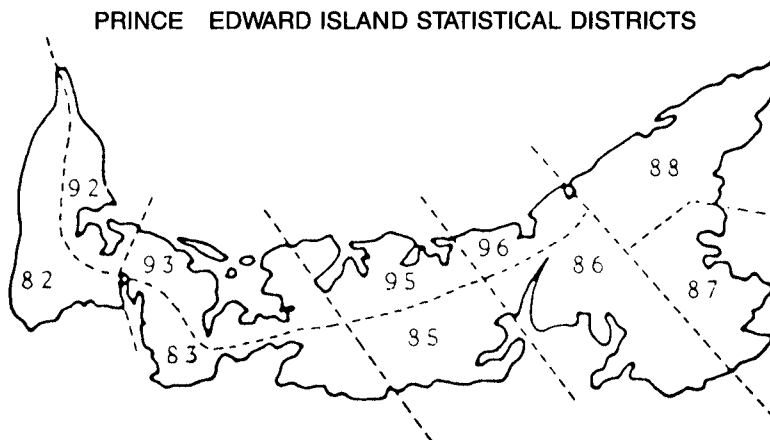


TABLE 48
AVERAGE PRICE RECEIVED BY PRINCE EDWARD ISLAND FISHERMEN,
SELECTED YEARS AND SPECIES
(CENTS PER POUND)

Year	Cod	Hake	Herring	Mackerel	Smelts	Lobster	Oysters
1974	9.4	6.1	5.5	4.2	12.0	101.7	19.8
1975	9.8	7.4	7.3	5.2	9.1	94.7	23.3
1976	11.7	7.1	6.7	5.9	10.6	100.0	23.0
1977	14.6	8.9	7.6	6.8	10.8	110.2	24.5
1978	13.5	8.6	9.5	8.9	15.4	149.7	27.0
1979	17.9	9.7	11.5	10.6	17.7	152.7	33.2
1980	13.9	9.2	14.1	11.9	10.0	131.7	44.9
1981	16.1	10.0	10.4	11.6	10.0	155.9	53.1
1982	12.3	10.3	10.0	11.9	10.1	185.6	53.0
1983	12.5	6.0	10.0	12.0	15.0	188.0	53.0
1984	12.5	6.0	10.0	12.0	20.0	169.7	60.0
1985	14.0	8.0	10.0	12.0	60.0	223.6	60.0
1986	25.0	9.0	10.0	12.0	40.0	242.7	65.0
1987	30.0	30.0	11.0	12.0	45.0	262.5	75.0
1988	15.0	10.0	9.0	12.0	30.0	255.0	90.0
1989	20.0	12.0	5.0	12.0	44.8	216.7	90.0
1990 p	20.0	12.0	6.0	15.0	35.0	179.7	95.0

246.

p: preliminary

Source: Department of Fisheries and Oceans, compiled by Prince Edward Island Department of Fisheries and Aquaculture.

TABLE 49
TOTAL NUMBER OF TOURISTS VIA AUTO VEHICLES (1),
PRINCE EDWARD ISLAND
(MAY 15TH - OCTOBER 31ST)

	1984	1985	1986	1987	1988	1989	1990
Number of						(2)	
Tourist Parties	187,700	195,227	199,283	206,770	209,458	216,442	205,222

Note 1: Tourist Auto Vehicle includes cars, vans, motor homes, vehicles with trailers but excludes pick-up trucks.

Note 2: The Department of Tourism & Parks expresses concern over the quality of this statistic.

Source: Prince Edward Island Department of Tourism & Parks, Tourism Branch.

TABLE 50
AMOUNT EXPENDED BY NON-RESIDENT TOURISTS BY CATEGORY
ALL MODES (1) (MAY 15TH - OCTOBER 31ST)
(MILLIONS \$)

	1984	1985	1986	1987	1988	1989	1990
Gas and Oil	6.0	6.5	7.9	8.7	8.1	8.8	7.3
Auto Repairs & Maintenance ...	0.5	0.5	0.4	0.4	1.1	1.2	0.3
Food & Beverage (excluding alcohol).....	4.3	4.6	5.5	6.0	6.0	6.6	4.9
Alcoholic Beverages	2.5	2.7	2.8	3.1	4.1	4.4	2.9
Restaurant Meal & Beverages ..	13.8	15.0	19.4	21.6	25.7	28.1	22.2
Accommodations	13.2	14.3	19.1	21.3	24.0	26.2	25.6
Recreation & Entertainment	4.7	5.1	7.7	8.5	7.3	8.0	8.2
Handcrafts	4.1	4.5	4.9	5.5	6.4	7.0	8.0
Other	5.1	5.4	6.4	7.2	7.3	8.0	4.7
Total	54.2	58.6	74.1	82.3	90.0	98.3	84.1

Note 1: All Modes includes Auto, bus, motorcoach, air and cruise ships.

Source: Prince Edward Island Department of Tourism & Parks, Tourism Branch.

TABLE 51
TOURIST PARTIES BY MODE OF TRAVEL - 1990 SEASON
PRINCE EDWARD ISLAND
(MAY 15TH - OCTOBER 31ST)

Mode	Spring (May 15 - June 11)	Summer (June 12 - Sept 12)	Fall (Sept 13 - Oct. 31)	Total 1990 Season
Auto Parties	16,696	160,065	28,461	205,222
Percent	7.3	69.6	12.4	89.3
Air Parties	3,229	16,640	4,783	24,652
Percent	1.4	7.2	2.1	10.7
Total Parties	19,925	176,705	33,244	229,874
Percent	8.7	76.9	14.5	100.0

Source: Prince Edward Island Department of Tourism & Parks, Tourism Branch.

TABLE 52
PRINCE EDWARD ISLAND TOURIST AUTO PARTIES BY ORIGIN
(MAY 15TH - OCTOBER 31ST, 1990)

Tourist Origin	Parties	Percent
Newfoundland	3,393	1.7
Nova Scotia	71,821	35.0
New Brunswick	53,524	26.1
Quebec	17,244	8.4
Ontario	28,510	13.9
Other Canada	2,864	1.4
New England States	13,962	6.8
Mid-Atlantic States	6,251	3.0
Other States	7,653	3.7
Total	205,222	100.0

Source: Prince Edward Island Department of Tourism & Parks, Tourism Branch.

TABLE 53
PRINCE EDWARD ISLAND RESTAURANT, CATERER AND TAVERN RECEIPTS
BY KIND OF BUSINESS (\$'000)

Year	Restaurants Licensed	Restaurants Unlicensed	Take-Outs	Caterers	Taverns	Total
1985	17,367.9	15,461.7	9,413.3	1,441.2	2,357.0	46,043.7
1986	18,620.8	16,894.8	9,263.9	1,742.8	2,162.9	48,687.2
1987	22,010.8	18,746.0	9,248.3	2,389.0	3,150.6	55,547.9
1988	23,612.4	18,400.5	10,419.8	2,224.5	4,882.6	59,542.2
1989	25,871.3	19,034.9	11,166.6	2,570.5	5,768.3	64,414.2
1990 p	26,825.5	20,762.8	13,300.5	2,853.3	5,859.9	69,604.2
1990/1989 % Change	3.7	9.1	19.1	11.0	1.6	8.1
1990 Monthly						
January	1,426.3	1,374.0	774.2	162.1	408.1	4,144.9
February	1,434.2	1,329.1	794.0	224.3	393.7	4,175.4
March	1,704.0	1,664.3	980.6	221.2	467.7	5,038.0
April	1,651.8	1,465.4	946.8	211.7	425.5	4,701.4
May	1,900.4	1,644.2	1,199.0	200.9	478.6	5,423.4
June	2,401.3	1,830.9	1,380.7	234.8	550.0	6,397.9
July	3,730.9	2,346.3	1,623.3	229.8	522.1	8,452.5
August	3,964.9	2,349.0	1,573.3	294.5	644.1	8,826.0
September	2,947.1	1,784.0	1,061.9	231.1	497.1	6,521.3
October	1,880.5	1,698.0	1,025.0	279.8	493.8	5,377.3
November	1,860.7	1,622.9	977.0	285.6	474.0	5,220.4
December	1,923.4	1,654.7	964.7	277.5	505.2	5,325.7

p: preliminary

Note: Totals may not equal the sum of components due to rounding.

Source: Statistics Canada Catalogue 63-011, Restaurants, Caterer and Tavern Statistics.

TABLE 54
NUMBER OF LOCATIONS AND TOTAL RECEIPTS
FROM MAJOR ACCOMODATION GROUPS, PRINCE EDWARD ISLAND

Year	Hotels		Motels		(2) Tourist Courts and Cabins		(3) Tent and Trailer Campgrounds		Total	
	No.	\$'000	No.	\$'000	No.	\$'000	No.	\$'000	No.	\$'000
1981	25	11,077	55	6,209	75	1,216	51	2,251	206	20,753
1982	25	12,864	56	5,600	74	1,363	48	2,328	203	22,115
1983	24	14,568	54	5,778	72	1,501	47	2,229	197	24,076

Year	(1) Hotels, Motels, & Motor Hotels		Tourist Courts and Cabins		Tent and Trailer Campgrounds		Total		
	No.	\$'000	No.	\$'000	No.	\$'000	No.	\$'000	
1984		75	19,000	69	2,300	29	1,600	173	22,900
1985 r		72	25,500	22	x	11	1,400	105	26,900
1986 r		57	29,100	27	x	17	1,700	101	30,800
1987 p		68	35,000	28	1,500	15	1,700	111	38,200

Note: r: revised p: preliminary x: confidential

Note (1): Data for hotels and motels have been aggregated due to classification changes which made the separate estimates unreliable between 1984 and 1985.

Note (2): Tourist Courts and Cabins also include: Outfitters, Recreation and Vacation Camps.

Note (3): Tent and Trailer Campgrounds also include: Guest Houses, Tourist Homes, Lodging Houses and Residential Clubs.

Source: Statistics Canada Catalogue 63-204, Traveller Accommodation Statistics.

TABLE 55
SOURCES OF RECEIPTS FOR ALL TYPES OF
ACCOMODATION GROUPS, PRINCE EDWARD ISLAND (\$'000)

Year	Rooms	Meals	Beer, Wine and Liquor	Merchandise Sales	All Other	Total
1981	12,510	4,227	2,195	903	412	20,753
1982	12,966	4,472	2,968	968	275	22,155
1983	14,468	4,429	3,110	900	646	23,553
1984	14,393	4,809	x	x	413	23,488

Note: Data prior to 1980 are not shown as they are not comparable. Because no breakdown of receipts by source was available for Outfitters and Provincial and Federal campgrounds, components will not add to totals.

Note "x": Confidential

Source: Statistics Canada Catalogue 63-204, Traveller Accommodation Statistics.

TABLE 56
PRINCIPAL STATISTICS OF PRINCE EDWARD ISLAND
MANUFACTURING INDUSTRIES,

MANUFACTURING ACTIVITY (1)

Year	Establishments	Production & Related Workers				Cost of Fuel & Electricity (\$'000)	Cost of Materials & Supplies (\$'000)	Value of Shipments of Goods of Own Manufacture (\$'000)	Value Added (\$'000)
		Male	Female	Hours Paid ('000)	Wages (\$'000)				
1982	127	1,488	738	4,560	30,552	9,078	169,569	255,173	75,559
1983	140	1,553	848	5,030	35,615	10,273	185,767	285,176	93,148
1984	146	1,480	860	4,876	35,327	10,759	188,943	289,048	87,158
1985	141	1,598	1,096	5,594	41,362	11,717	192,923	296,874	94,042
1986	141	1,508	1,110	5,210	39,211	8,652	208,867	325,798	107,008
1987	135	na	na	na	na	7,579	230,209	362,511	129,952

Note 1: These statistics refer to production activity of manufacturing establishments.

TOTAL ACTIVITY (2)

Year	Working Owners & Partners	Administrative Office And Other Non-Manufacturing Employees			Total Employees		Cost of Materials Supplies & Goods for Resale (\$'000)	Value of Shipments & Other Revenues (\$'000)	Value Added (\$'000)
		Male	Female	Salaries (\$'000)	Number	Salaries & Wages (\$'000)			
1983	37	458	202	14,054	3,061	49,669	227,188	330,835	97,386
1984	40	410	213	14,350	2,963	49,677	232,580	344,169	98,643
1985	na	451	243	16,118	3,388	57,480	239,884	354,122	104,328
1986	na	496	304	18,809	3,418	58,020	261,193	387,656	116,540
1987	na	na	na	na	3,530	60,698	276,838	416,915	137,727

Note 2: These statistics refer to total activity of manufacturing firms and therefore include non-manufacturing activities of manufacturing establishments and activities of separate head offices, sales offices and auxiliary units.

Note: Statistics are based on the 1980 Standard Industrial Classification.

na: not available

Source: Statistics Canada Catalogue 31-203, Manufacturing Industries of Canada, National and Provincial Areas.

TABLE 57
VALUE ADDED BY MAJOR GROUPS AND INDUSTRY
PRINCE EDWARD ISLAND (\$'000)

MANUFACTURING ACTIVITY (1)

	1983	1984	1985	1986	1987
Fish Products Industry	16,529	17,741	16,277	24,177	na
Dairy Products Industry	12,613	12,362	x	x	na
Other Food and Beverage Industry	x	x	x	34,543	na
Total Food and Beverage Industry	59,902	47,779	49,777	58,720	na
Wood Industries	3,211	3,384	3,299	3,889	na
Furniture & Fixtures Industry	x	x	x	x	na
Printing, Publishing & Allied Industries	8,315	x	10,486	x	na
Machinery Industries	x	x	x	x	na
Non-Metallic Mineral Products Industries	x	x	x	1,460	na
Miscellaneous Manufacturing Industries	2,382	3,248	4,456	47,771	na
Total All Industries	93,148	87,158	94,042	107,008	129,952

TOTAL ACTIVITY (2)

	1983	1984	1985	1986	1987
Fish Products Industry	18,724	21,867	19,735	28,491	26,149
Dairy Products Industry	13,331	12,976	x	x	x
Other Food Industries	x	17,382	34,766	35,372	53,875
Total Food Industry	x	52,225	54,501	63,863	80,024
Wood Industries	3,189	7,453	6,976	7,429	7,902
Furniture & Fixtures Industry	x	x	x	x	x
Printing, Publishing & Allied Industries	8,398	x	10,439	x	10,472
Machinery Industries	x	x	x	x	3,403
Non-Metallic Mineral Products Industries	x	x	x	1,428	2,110
Miscellaneous Manufacturing Industries	2,388	3,224	4,364	4,657	4,518
Total All Industries	97,386	98,643	104,328	116,540	137,727

x: confidential
na: not available

Note 1: These statistics refer to production activity of manufacturing establishments. Information pertaining to Major Groups of Industries involved in Manufacturing Activities in 1987 is not available.

Note 2: These statistics refer to total activity of manufacturing firms.

Source: Statistics Canada Catalogue 31-203, Manufacturing Industries of Canada, National and Provincial Areas.

TABLE 58

**ESTIMATED VALUE OF SHIPMENTS IN ALL MANUFACTURING INDUSTRIES
PROVINCE OF ORIGIN - PRINCE EDWARD ISLAND (\$'000)**

	1987	1988	1989	1990
January.....	24,943	24,432	26,363	27,789
February.....	21,435	24,338	24,464	26,599
March.....	23,395	28,270	26,491	29,611
April.....	25,667	27,160	28,179	27,850
May.....	37,450	39,900	45,418	48,955
June.....	43,857	46,952	40,964	50,878
July.....	36,948	36,349	34,081	46,374
August.....	33,570	31,320	34,170	45,985
September.....	30,242	33,414	34,130	47,262
October.....	30,997	34,499	37,382	40,700
November.....	28,205	29,226	31,361	33,375
December.....	26,040	27,592	28,018	29,199
Total.....	362,749	383,452	391,021	454,577

Source: Statistics Canada Catalogue 31-001, Inventories Shipments and Orders in Manufacturing Industries.

Aug \ XII MF WKI Manufacturing Shipments

- B2.. B120 - 1. All D 318 657
- C2.. C120
- D2.. D120 2. Food D 318 659
- E2.. E120
- F2.. F120 3. Fish D 318 663
- G2.. G120
- Chemical (37) D 318 785

Jan 82 -> Nov 91

*#N12
89M1*

MF. XII

C:\Prog\XII MF

*MF - 1,2,3. Wndm,
adjustm.*

TABLE 59
PRINCE EDWARD ISLAND ELECTRICITY STATISTICS
CAPABILITY AND PEAK LOAD (M.W.)

	1985	1986	1987	1988	1989	1990
Gross Capability	110	115	115	114	114	114
Firm Power Peak Load within Province.....	93	95	105	113	121	127
Indicated Reserve.....	37	40	35	25	22	21
Indicated Reserve as a Percentage of Firm Peak Power Load.....	39.8	42.1	33.3	22.1	18.2	16.5

Note: 1990 forecast.

Source: Statistics Canada Catalogue 57-204, Electric Power Statistics.

TWELVE MONTH AVERAGE OF ELECTRICITY REQUIREMENTS (MWH)

	1985	1986	1987	1988	1989	1990
Total Received from Other Provinces.....	47,890	50,809	49,221	51,626	51,863	55,974
Net Generation on P.E.I.....	128	989	4,697	7,061	8,701	6,731
Deliveries to Other Provinces.....	0	0	0	23	0	0
Total Supply.....	48,018	51,798	53,918	58,664	60,564	62,705

Source: Statistics Canada Catalogue 57-001, Electric Power Statistics.

**TWELVE MONTH AVERAGE OF DOMESTIC COST OF 500 KWH
OF ELECTRICITY (\$ PER MONTH)**

	1985	1986	1987	1988	1989	1990
Charlottetown: Maritime Electric Co. Ltd.....	59.39	46.83	45.41	50.20	48.42	52.40

Source: Prince Edward Island Department of Energy and Forestry, Energy Branch.

MW = Megawatt, MWH (Megawatt hour) = Watt hour x 10⁶, KWH (Kilowatt hour) = Watt hour x 10³.

TABLE 60
SALES OF REFINED PETROLEUM PRODUCTS
PRINCE EDWARD ISLAND, 1984 - 1990
(CUBIC METRES)

	1984	1985	1986	1987	1988	1989	1990
Motor Gasoline	169,196	165,361	167,295	170,837	180,062	182,214	192,608
Diesel	56,319	48,042	48,454	51,078	56,084	71,833	80,304
Light Fuel Oil	118,669	122,615	129,528	137,354	151,138	164,182	173,362
Heavy Fuel Oil	8,932	8,695	9,672	29,560	41,344	41,909	37,487
Other	39,045	35,392	50,395	62,138	57,434	37,987	34,996
Total	392,161	380,105	405,344	450,967	486,062	498,125	518,757

One Cubic Metre = 1,000 Litres

Source: Statistics Canada Catalogue 45-004, Refined Petroleum Products.

TABLE 61
SCHEDULE OF GASOLINE SALES IN PRINCE EDWARD ISLAND FOR THE
FISCAL YEAR ENDED MARCH 31ST
(CUBIC METRES)

net of product?

Fiscal Year	Taxed	Tax Exempt Gasoline			
	Gasoline (net)	Farmers	Fishermen	Other	Total
1984	161,347	1,750	5,545	1,527	8,822
1985	161,561	1,616	4,735	1,520	7,871
1986	160,369	1,423	4,416	1,376	7,215
1987	166,692	1,263	3,745	1,248	6,256
1988	168,815	1,124	3,089	772	4,985
1989	175,145	1,217	2,349	1,323	4,889
1990	177,198	na	na	na	3,802 = 181,000

why the difference and should it be to explain?

One Cubic Metre = 1,000 Litres

na: not available

Source: Prince Edward Island Department of Finance, Revenue Division.

Note: As of 1990 Revenue Division is recording total purchases of Tax Exempt Gasoline.

TABLE 62

**TRANSPORTATION STATISTICS, PRINCE EDWARD ISLAND
BORDEN, P.E.I. - CAPE TORMENTINE, N.B. FERRY SERVICE**

Year	Autos	Trailers & Campers	Pick-up Trucks	Tractor Trailers	Buses	Total Vehicles	Rail Cars	Passengers
1983	478,292	29,423	73,807	75,095	3,251	670,330	11,424	1,565,603
1984	483,004	30,519	74,309	82,727	3,178	673,737	10,609	1,583,298
1985	494,697	30,514	76,604	90,346	2,816	695,977	8,714	1,614,950
1986	513,665	30,400	81,474	92,485	4,007	722,031	5,681	1,661,873
1987	524,416	31,581	87,292	104,979	4,725	752,993	2,968	1,713,110
1988	549,640	31,985	93,768	114,030	5,052	794,475	1,001	1,777,292
1989	578,854	32,314	88,149	128,141	4,887	832,345	701	1,847,319
1990	584,259	30,104	76,974	136,279	3,528	831,144	0	1,791,286

WOOD ISLANDS, P.E.I. - CARIBOU, N.S. FERRY SERVICE

Date	Autos	Pick-up Trucks	Commercial Vehicles	Buses	Recreation Vehicles	Passengers
May 22 - Dec. 19/83	141,346	--	31,269	1,320	13,791	496,400
May 03 - Dec. 20/84	150,355	14,811	22,520	1,324	14,075	525,026
April 26 - Dec. 09/85	153,294	15,105	20,848	1,384	14,725	527,108
April 29 - Dec. 10/86	156,350	15,062	19,672	1,404	14,401	530,095
May 07 - Dec. 20/87	155,623	16,650	21,350	1,470	15,237	538,591
April 26 - Dec. 12/88	162,989	17,771	22,376	1,484	14,638	551,555
April 24 - Dec. 06/89	163,253	17,846	21,228	1,432	13,808	548,563
April 27 - Dec. 20/90	159,434	17,023	24,934	1,314	12,220	529,385

SOURIS, P.E.I. - GRINDSTONE, MAGDALEN ISLANDS FERRY SERVICE

Year	No. of Voyages	Autos	Buses, Vans & Trucks	Motor Homes & Trailers	Motorcycle & Bicycles	Heavy Machinery	Passengers
1983	272	12,125	4,088	(1)	1,879	63	43,612
1984	271	10,095	4,127	1,671	1,547	37	40,357
1985	281	11,728	4,103	1,881	1,667	24	45,442
1986	284	13,727	3,856	2,089	1,487	18	52,040
1987	277	15,464	3,228	804	1,487	29	53,207
1988	274	14,786	3,289	2,316	1,426	19	53,730
1989	288	16,401	3,143	2,689	1,593	21	59,712
1990	286	15,871	3,470	1,831	1,544	26	56,882

Note 1: Number of trailers is included in the number of trucks.

Source: Marine Atlantic and Northumberland Ferries Limited compiled by Prince Edward Island Department of Transportation and Public Works.

TABLE 63
RAIL FREIGHT - CARLOADS
PRINCE EDWARD ISLAND, 1982 - 1989

Year	Inward	Outward	Total
1982	3,008	3,152	6,160
1983	3,176	2,738	5,914
1984	3,251	2,165	5,416
1985	2,736	1,708	4,444
1986	2,573	412	2,985
1987	1,446	150	1,596
1988	589	412	1,001
1989	344	357	701
% Change 1988/89	-41.6	-13.3	-30.0

Note: Prince Edward Island Rail Service was discontinued ^{in 1989} ~~December 31, 1989~~.

Source: Prince Edward Island Department of Transportation and Public Works. *not necessarily true*

INTRA
~~PROVINCIAL~~

TABLE 64
PROVINCIAL BUS SERVICE - ISLAND TRANSIT CO-OPERATIVE LTD.
1988 - 1990

	Number of Passengers		
	1988	1989	1990
Charlottetown - Souris (May - Oct.)	814	828	* (1)
Charlottetown - Tignish (Jan. - Dec.)	7,600	6,819	5,399
Charlottetown - New Glasgow (Summer Service May - Oct.)	3,295	3,003	* (1)
TOTAL	11,709	10,650	5,399

Note (1): Statistics for this route no longer available.

Source: Prince Edward Island Department of Transportation and Public Works.

TABLE 65
AIR PASSENGERS TO AND FROM PRINCE EDWARD ISLAND
1986 - 1990

Year	To P.E.I.		From P.E.I.		Total	
	Canadian Airlines	Air Canada	Canadian Airlines	Air Canada	Canadian Airlines	Air Canada
1986	na	27,751	na	31,531	161,605	59,282
1987	42,722	49,217	43,988	50,370	86,710	99,587
1988	48,138	60,856	47,170	59,359	95,308	120,215
1989	104,985		107,507		212,492	
1990	38,479	60,092	37,513	65,119	75,992	125,211

Note: Canadian Airlines took over EPA in 1986. Detail data for Canadian Airlines in 1986 is not available.

Note: Only totals are available for 1989.

Source: Prince Edward Island Department of Transportation and Public Works.

TABLE 66
PRINCE EDWARD ISLAND MOTOR VEHICLE REGISTRATIONS
1981 - 1989

Year	Cars	Trucks *	Trailers	Other	Total
1981	48,564	14,969	7,073	5,376	75,982
1982	48,177	14,962	6,852	5,521	75,512
1983	50,521	15,629	6,778	5,727	78,655
1984	52,538	16,499	5,529	5,705	80,271
1985	54,533	17,131	1,310	5,600	78,574
1986	56,224	18,045	1,085	5,547	80,901
1987	60,169	19,589	1,334	3,034	84,126
1988	61,983	20,321	1,804	2,774	86,882
1989	63,947	20,452	5,140	2,481	92,020

* The 1983, 84, 85, 86 and 87 figures for Trucks includes 462, 549, 582, 579 and 430 trucks respectively under the Pro-rated Program. — ?

Note: Other includes buses, motorcycles, farm trucks, snowmobiles and all other vehicles. Since 1984 trailers are registered for five years.

Note: 1990 data not available at time of publication.

Source: Highway Safety Division, Department of Transportation & Public Works.

TABLE 67
PRINCE EDWARD ISLAND SCHOOL ENROLMENT

School Year	Elementary (1-6)	Secondary (7-12)	Special Education (1)	Total
1982-83	12,440	12,923	233	25,596
1983-84	12,265	12,840	251	25,356
1984-85	12,193	12,562	293	25,048
1985-86	12,120	12,434	324	24,878
1986-87	12,097	12,328	348	24,773
1987-88	12,037	12,297	304	24,638
1988-89	12,159	12,241	308	24,708
1989-90	12,270	12,202	272	24,744
1990-91	12,217	12,287	-	24,504

Note (1): From 1990-91 on Special Education enrolments are included in Elementary and Secondary enrolments.

Note: Enrolment figures are for public schools including vocational high schools and private schools.

Source: Prince Edward Island Department of Education.

TABLE 68
POST SECONDARY ENROLMENTS
PRINCE EDWARD ISLAND

School Year (1)	University of Prince Edward Island					Holland College (3)
	Full-Time	Part-Time	Summer	Veterinary Medicine	Master of Science Program	
1981-82	1,390	763	920	761
1982-83	1,596	663	1,027	802
1983-84	1,676	710	1,144	810
1984-85	1,720	689	1,070	837
1985-86	1,768	781	1,184	825
1986-87 (2)	1,837	685	1,090	52	..	881
1987-88 (2)	1,921	753	1,239	98	10	845
1988-89 (2)	2,023	813	1,291	142	16	918
1989-90 (2)	2,126	849	1,321	184	22	912
1990-91 (2)	2,317	905	1,381	185	27	966

.. : nil

Note 1: The University of Prince Edward Island school year runs from May of the first year to April the following year, including two summer sessions. Full-time and part-time figures for U.P.E.I. are recorded as of December 1 of each school year. Holland College school year runs from September to June with the exception of some programs that continue through the summer. Holland College figures are recorded as of December 1 each year and are obtained from the MPHEC Census.

Note 2: Full-time enrolment has been adjusted to separate students at the University of Prince Edward Island Faculty of Veterinary Medicine, and Master of Science Program.

Note 3: See Table 69 for a detailed breakdown of enrolment at Holland College.

Source: Registrar's Office, University of Prince Edward Island and Holland College.

TABLE 69
HOLLAND COLLEGE ENROLMENTS
1985/86 TO 1989/90

TYPE OF COURSES	1984/85	1985/86	1986/87	1987/88	1988/89	1989/90
Post Secondary	837	825	881	845	918	912
Canada Employment & Immigration Commission	1,566	1,252	769	901	658	580
Canadian Job Strategy	--	--	--	217	266	436
Adult Academic Night	431	536	461	485	482	487
Continuing Education	2,893	3,337	3,407	3,015	3,337	3,300
Extension	627	690	902	780	434	420
Short Courses	322	255	857	389	573	869
Vocational Adult	198	257	234	237	269	279
Vocational High School	321	295	257	247	227	192
Pre Vocational	151	198	179	117	149	135
Leadership Institute	979	1,048	1,094	979	693	650
General Education Diploma Testing	160	120	159	180	330	260
Total	8,485	8,813	9,200	8,392	8,336	8,520

Note: Holland College as a community college offers a variety of non-post secondary courses such as those listed above. More information concerning these non-post secondary courses can be obtained by contacting the registrar's office at Holland College.

--: nil

Source: Registrar's Office, Holland College.

TABLE 70
PRINCE EDWARD ISLAND EDUCATIONAL EXPENDITURES

Fiscal Year	(1) Vocational & Post Secondary (\$)	(2) Elementary & Secondary (\$)	Total (\$)
1983-84	22,060,200	77,325,600	99,385,800
1984-85	23,639,000	78,030,000	101,669,000
1985-86	25,227,400	81,368,100	106,595,500
1986-87	28,826,700	87,065,700	115,892,400
1987-88	32,491,600	92,268,100	124,759,700
1988-89	33,971,600	100,176,400	134,094,000
1989-90	37,978,600	107,687,600	145,666,200

Note (1): Starting in 1985-86 fiscal year Vocational and Post Secondary includes grant for the Atlantic Veterinary College.

Note (2): Elementary and Secondary includes grants to Regional School Boards; the Provincial Library Services; and programs operated directly by the Department of Education, as well as administration costs for the Department.

Source: Prince Edward Island Department of Education.

TABLE 71
PRINCE EDWARD ISLAND HEALTH AND HOSPITAL CARE STATISTICS

	1985	1986	1987	1988	1989	1990
Practising Physicians (1)	133	140	139	146	147	147
Physicians Per '000 Population (2)	1.06	1.11	1.09	1.14	1.13	1.13
Population Per Physician (2)	947	904	916	880	884	887
Total Bed Capacity	2,043	1,978	1,992	2,040	1,964	2,001
- Active Treatment Hospitals	690	690	690	690	694	694
- Licensed Nursing Homes	401	401	415	463	434	471
- Other Institutions (includes Manors, Hillsborough Hospital, Dr. Eric Found Health Centre, C.F.B. Summerside, and Detox units in each County (3)	952	887	887	887	836	836
Bed Capacity Per '000 Population (2)	16.2	15.6	15.6	15.9	15.1	15.3

Note (1): Includes all physicians except locums who received at least \$20,000 in payment from the plan.

Note (2): Population estimates as of June 1st of each year.

Note (3): As of 1989, other institutions no longer include CFB Summerside and Detox Units in each county.

Source: Prince Edward Island Hospital and Health Services Commission, and Aging and Extended Care Division Department of Health and Social Services.

physician

TABLE 72
ACTIVE TREATMENT HOSPITALS, PRINCE EDWARD ISLAND

Fiscal Year	Expenditures	Rate of Growth of Expenditures %	Cost Per Capita \$	Rate of Growth of Cost Per Capita %
1984-85	48,169,511	5.7	382.30	5.0
1985-86	51,138,786	6.2	403.94	5.7
1986-87	51,221,460	0.2	402.37	-0.4
1987-88	53,840,300	5.1	418.99	4.1
1988-89	58,632,698	8.9	451.02	7.6
1989-90	63,921,993	9.0	490.20	8,7

Note: The Prince Edward Island population figures for 1981-86 have been revised, therefore, the cost per capita (\$) and rate of growth of cost per capita (%) have been revised accordingly. Population estimates as of June 1.

Source: Prince Edward Island Hospital and Health Services Commission.

TABLE 73
PHYSICIANS SERVICES, PRINCE EDWARD ISLAND

Fiscal Year	Total Number of Services	Services Amount \$	Cost Per Service \$	Cost Per Capita \$
1983-84	849,600	14,871,408	17.50	118.88
1984-85	880,400	15,203,001	17.27	120.66
1985-86	970,700	17,968,065	18.51	141.93
1986-87	971,900	18,672,850	19.21	146.68
1987-88	993,233	19,916,947	20.05	155.00
1988-89	1,062,691	22,136,629	20.83	170.28
1989-90	1,074,120	23,477,358	21.86	180.04

Note: The Prince Edward Island population figures have been revised, therefore, the cost per capita (\$) have been revised accordingly. Population estimates as of June 1.

Note: Previous tables gave the total number of claims, this table gives the total number of services. The difference being a physician may supply more than one service per claim.

Source: Prince Edward Island Hospital and Health Services Commission.

TABLE 74
CRIME STATISTICS, PRINCE EDWARD ISLAND
1987 - 1990

*could be high
 in murder, etc*

Offenses	Actual Occurrences				Offenses Cleared by Charge			
	1987	1988	1989	1990	1987	1988	1989	1990
Murder, Homicide & Attempted Murder	0	0	0	0	0	0	0	0
Sexual Assault and Sexual Assault and Other Sexual Offenses	59	72	98	112	21	42	27	61
Wounding and Assault	324	375	377	358	97	119	156	201
Robbery	6	15	10	9	2	10	4	3
Break & Enter	532	546	600	692	303	143	167	150
Theft of Motor Vehicle	91	101	126	117	35	44	48	40
Theft over \$1000	81	88	93	161	28	22	34	25
Theft Under \$1000	1,122	1,351	1,224	1,309	134	226	157	172
Possession of Stolen Goods & Frauds	242	244	278	394	178	152	95	165
Possession of Offensive Weapon	23	16	15	14	8	8	4	6
Other Criminal Code	2,044	1,838	2,162	2,380	291	210	295	406
Federal Statutes	340	446	400	256	22	26	20	31
Provincial Statutes	2,825	2,897	2,461	2,154	1,749	1,778	1,353	1,168
Municipal By-Laws (1)	49	34	26	277	49	9	7	230
Narcotics & Food and Drug Act Violations	192	187	172	197	123	86	106	102
Total	7,930	8,210	8,042	8,430	3,040	2,875	2,473	2,760

Note: These figures are for R.C.M.P. jurisdictions only and do not include any of the data available from municipal forces. Provincial Statutes do not include traffic cases. Offenses cleared by charge represent those offenses in which the person(s) or party was charged in court.

Note: 1990 data are preliminary in nature and subject to change.

Note (1): The large increase in Municipal By-Laws for 1990 over previous years is due to parking tickets being added to the system.

Source: R.C.M.P., "L" Division.

TABLE 75
PERSONS HELD IN PRINCE EDWARD ISLAND JAILS
1987 - 1990

	Lock-Ups				Remand				Sentenced			
	1987	1988	1989	1990	1987	1988	1989	1990	1987	1988	1989	1990
Provincial Correctional Centre												
Adult												
Male	1,067	1,001	943	1,007	82	62	81	85	901	946	943	699
Female	59	62	69	95	4	3	10	3	73	64	53	62
Total	1,126	1,063	1,012	1,102	86	65	91	88	974	1,010	1,001	761
Prince County Jail												
Adult												
Male	531	426	347	412	57	47	26	78	465	415	164	353
Female	26	24	9	17	1	0	2	0	0	0	1	2
Total	557	450	356	429	58	47	28	78	465	415	165	355
Kings County Jail												
Adult												
Male	114	176	158	209	2	2	8	17	4	5	134	228
Female	5	7	3	10	0	0	0	0	2	0	1	0
Total	119	183	161	219	2	2	8	17	6	5	135	228
Total All Jails												
Adult												
Male	1,712	1,603	1,448	1,628	141	111	115	180	1,370	1,366	1,241	1,280
Female	90	93	81	122	5	3	12	3	75	64	60	64
Total	1,802	1,696	1,529	1,750	146	114	127	183	1,445	1,430	1,301	1,344

Source: Prince Edward Island Department of Justice

TABLE 76
PERSONS HELD IN PRINCE EDWARD ISLAND YOUTH FACILITIES
TOTAL DAYS BY CUSTODY AND YOUTH FACILITY
1989 - 1990

	<u>Lock-Up</u>		<u>Remand</u>		<u>Open Custody</u>		<u>Secure Custody</u>		<u>Facility Total</u>	
	1989	1990	1989	1990	1989	1990	1989	1990	1989	1990
Prince Edward Island Youth Centre	39	62	1,066	730	--	--	7,061	7,568	8,166	8,360
Summerside Youth Centre (1).....	--	--	--	--	84	--	--	--	84	--
Tyne Valley Youth Centre (2).....	--	--	--	--	1,352	2,200	--	--	1,352	2,200
Georgetown Youth Centre (2).....	--	--	--	--	2,035	2,576	--	--	2,035	2,576
Community Placements..	--	--	--	--	875	10	--	--	875	10
Out of Province	--	--	--	--	53	--	152	--	205	--
Adult Facilities	<u>109</u>	<u>111</u>	<u>--</u>	<u>--</u>	<u>--</u>	<u>--</u>	<u>--</u>	<u>--</u>	<u>109</u>	<u>111</u>
TOTAL.....	148	173	1,066	730	4,399	4,786	7,213	7,568	12,826	13,257

Note (1): Summerside Youth Centre (an interim Facility) officially closed February, 1989.

Note (2): Georgetown and Tyne Valley Youth Centres were built in 1988 and operational in 1989.

Note: - nil

Source: Prince Edward Island Department of Justice.

TABLE 77
ENTRIES UNDER THE SUPREME COURT OF PRINCE EDWARD ISLAND
FISCAL YEAR ENDED MARCH 31ST
1981 - 1990

Fiscal Year	Cases	Liens	Chattel Mortgages	Book Debts	Judgements	Divorces
1981	2,446	5,660	12,572	1,317	1,182	210
1982	2,538	6,047	10,212	1,360	1,193	233
1983	2,545	7,095	13,614	1,464	1,380	234
1984	2,110	9,252	16,387	1,547	1,076	222
1985	2,263	9,355	16,806	1,890	1,059	234
1986	2,401	9,475	17,671	2,830	1,152	207
1987	1,830	8,864	18,843	1,917	820	212
1988	1,761	7,542	19,597	1,863	764	309
1989	1,961	7,775	18,081	1,949	914	283
1990	2,099	7,938	17,276	1,845	1,067	334

Source: Supreme Court Law Courts, Prince Edward Island.

TABLE 78

**PROVINCE OF PRINCE EDWARD ISLAND REVENUE (\$)
FISCAL YEARS ENDED MARCH 31ST, 1988, 1989 AND 1990, PUBLIC ACCOUNTS**

	1988	1989	1990
GOVERNMENT OF CANADA			
Equalization	147,901,000	184,858,000	195,096,000
Income Tax on Electricity	3,306,378	2,000,230	2,541,331
Economic Regional Development Agreement	9,787,938	11,554,325	6,443,866
Canada Manpower	3,402,112	2,894,923	2,966,372
Canada Assistance Plan	21,461,011	21,902,201	24,748,990
Established Programs Financing	46,069,873	44,271,625	45,155,375
Extended Health Care	5,937,000	6,297,000	6,685,000
Other	6,943,969	8,127,836	15,551,555
TOTAL	244,809,281	281,906,140	299,188,489
Percentage Increase over Previous Year	0.3%	15.2%	6.1%
PROVINCIAL GOVERNMENT			
Sales Tax	76,619,352	85,912,038	93,286,060
Real Property Tax	22,169,862	24,336,202	26,650,999
Personal Income Tax	77,419,278	86,494,838	99,389,064
Corporate Income Tax	17,748,801	17,645,909	15,160,449
Other Taxes	38,797,845	40,930,020	43,401,095
Licenses & Permits	4,786,485	5,606,045	6,198,026
Fees & Services	10,869,624	11,838,141	14,241,066
Liquor Control Commission Sales	9,413,261	9,400,730	9,717,374
Other Sales	4,527,261	4,847,638	4,776,595
Investment Interest	26,070,198	31,402,100	34,665,612
TOTAL	288,421,967	318,413,661	347,486,340
Percentage Increase over Previous Year	16.8 %	10.4 %	9.1 %
TOTAL REVENUE RECEIVED	533,231,248	600,319,801	646,674,829
Percentage Increase over Previous Year	8.6%	12.6%	7.7%

Source: Prince Edward Island Department of Finance, Accounting Services.

TABLE 79

**PROVINCE OF PRINCE EDWARD ISLAND ORDINARY EXPENDITURES (\$)
FISCAL YEARS ENDED MARCH 31ST, 1989 AND 1990, PUBLIC ACCOUNTS**

	1989	1990
Department of Agriculture	27,144,149	27,524,211
P.E.I. Land Development Corporation	944,850	1,384,261
P.E.I. Grain Elevators Corporation	168,605	574,144
Department of Community & Cultural Affairs	16,535,429	13,153,919
Department of Environment (1)	--	7,576,566
Land Use Commission	360,906	353,705
P.E.I. Housing Corporation	2,130,207	2,381,600
Department of Education	134,094,030	145,666,191
Executive Council	1,756,398	1,914,605
Department of Finance	7,439,233	8,712,574
Employee Benefits (2)	--	8,310,499
P.E.I. Lending Authority	1,138,988	965,267
Department of Industry	15,915,205	13,164,746
P.E.I. Development Agency	16,276,548	17,407,498
Department of Health & Social Services	91,250,765	98,278,783
Hospital & Health Services Commission	105,194,388	114,246,664
Department of Energy and Forestry	9,098,140	8,297,819
P.E.I. Energy Corporation	1,247,203	1,274,707
Department of Justice & Attorney General	15,296,311	18,088,408
Department of Fisheries	2,525,880	2,453,616
Legislative Assembly	1,970,674	2,916,531
Department of Transportation & Public Works	47,503,800	51,068,385
Other Current Expenditures	16,518,379	9,564,699
Debt Charges	80,914,643	86,889,253
Department of Tourism & Parks	8,171,026	9,239,104
Department of Labour	1,496,320	1,909,723
	<u>605,092,077</u>	<u>653,317,478</u>
Percentage Increase (Decrease) over Previous Year	10.8%	8.0%
Surplus/Deficit	- 4,472,276	- 6,642,649

Note (1): Department of Environment was formed on June 6, 1989. Previously, the Department of Community and Cultural Affairs was responsible for matters dealing with the environment.

Note (2): Employee Benefits now administer their own budget and are recorded separately. Prior to 1990, Employee Benefits were included in 'Other Current Expenditures'.

Source: Prince Edward Island Department of Finance, Accounting Services, Public Accounts.

TABLE 80
REVENUES AND EXPENDITURES BY ALL LEVELS OF GOVERNMENT
NATIONAL ACCOUNTS BASIS, PRINCE EDWARD ISLAND, 1985-1989
(\$ MILLIONS)

	1985	1986	1987	1988	1989
EXPENDITURES					
FEDERAL					
Current Expenditures	237	240	232	268	253
Transfers to Persons	258	277	281	303	318
Subsidies & Assistance	44	37	38	40	39
Interest on Debt	57	66	73	86	98
Transfers to Government	236	233	240	277	303
Capital Expenditure	16	14	11	31	26
Capital Consumption Allowance	-14	-14	-14	-15	-16
Canada Pension Plan	28	32	38	44	51
Total (1)	862	885	899	1,034	1,072
PROVINCIAL, MUNICIPAL, HOSPITALS					
Current Expenditures	302	309	331	359	389
Transfers to Persons	65	69	83	92	92
Subsidies & Assistance	25	34	31	37	38
Interest on Debt	62	64	69	77	83
Capital Expenditure	56	59	71	67	70
Capital Consumption Allowance	-30	-33	-34	-35	-38
Total (2)	480	502	551	597	634
REVENUES					
FEDERAL - Total (3)*	245	315	334	375	399
PROVINCIAL, MUNICIPAL, HOSPITALS					
Federal Transfers (4)	236	233	240	277	303
Taxes & Other Revenues (5)	251	275	311	351	370
Total	487	508	551	628	673
Own Source Revenues (3) + (5)	496	590	645	726	769
Total Expenditures (1) + (2)-(4)	1,106	1,154	1,210	1,354	1,403
Overall (Deficit)	-610	-564	-565	-628	-634

*: Principally Direct and Indirect Taxes.

Source: Statistics Canada Catalogue 13-213, Provincial Economic Accounts.

TABLE 81
PRINCE EDWARD ISLAND PROVINCIAL GOVERNMENT EMPLOYMENT

Year	Classified Employees	Unclassified Employees	Total Employees
1984	2,927	697	3,624
1985	2,964	789	3,753
1986	2,994	864	3,858
1987	3,044	963	4,007
1988	3,139	1,243	4,302
1989	3,256	1,110	4,366
1990	3,333	1,195	4,528

1990	Full Time	Part Time	Full Time	Part Time	Full Time	Part Time
Agriculture	116	18	48	3	164	21
Community & Cultural Affairs	108	35	34	19	142	54
Education	48	2	18	0	66	2
Energy and Forestry	53	0	44	0	97	0
Environment	50	2	13	1	63	3
Finance	164	0	30	0	194	0
Fisheries & Aquaculture	23	3	5	0	28	3
Health and Social Services	1,031	427	270	45	1,301	472
Industry	36	0	5	0	41	0
Justice and Attorney General	249	43	64	1	313	44
Labour	29	0	9	1	38	1
Tourism & Parks	47	12	23	0	70	12
Transportation & Public Works	450	78	424	1	874	79
Addiction Services	4	0	4	0	8	0
Auditor General Office	18	2	1	0	19	2
Civil Service Commission	30	2	7	11	37	13
Energy Corporation	0	0	6	0	6	0
Executive Council	11	1	10	0	21	1
Hospital & Health Services Commission	32	0	7	0	39	0
Housing Corporation	33	2	18	0	51	2
Agriculture Development Corporation	12	0	5	0	17	0
Land Use Commission	1	0	1	0	2	0
Legislative Assembly	0	0	7	0	7	0
Lending Authority	16	0	1	0	17	0
Liquor Control Commission	104	0	25	0	129	0
Public Utilities Commission	9	2	1	0	10	2
Treasury Board	16	0	1	0	17	0
Workers' Compensation Board	13	0	1	0	14	0
P.E.I. Development Agency	1	0	31	0	32	0
TOTAL	2,704	629	1,113	82	3,817	711

Note: Figures now include employees of P.E.I. Development Agency (this agency was formed when the Market Development Centre and Industrial Enterprises Incorporated were merged). The Milk Commission is now under the Agriculture heading.

Note: Figures are recorded as of December each year.

Note: Unclassified full-time employees also include, executive and contract employees.

Source: Civil Service Commission and Prince Edward Island Development Agency.

TABLE 82
PROVINCIAL GOVERNMENT EMPLOYMENT AND PAYROLL IN
PRINCE EDWARD ISLAND

Year	General Government		Provincial Government Enterprise	
	Total Payroll (\$'000)	Average Number of Employees	Total Payroll (\$'000)	Average Number of Employees
1983	84,696	4,473	5,710	294
1984	88,037	4,555	4,927	239
1985	92,254	4,556	6,107	276
1986	98,243	4,687	6,612	289
1987	105,007	4,827	5,623	264
1988	113,842	4,894	5,954	277
1989	116,615	4,986	6,134	292
1989				
Jan.- March	26,685	4,653	1,516	271
Apr.- June	25,945	4,748	1,549	271
July - Sept.	31,842	5,632	1,478	330
Oct.- Dec.	32,143	4,910	1,591	294
1990				
Jan.- March	29,897	4,888	1,941	294
Apr.- June	31,848	4,983	2,012	326
July - Sept.	36,489	6,015	1,835	332
Oct.- Dec.	na	na	na	na 350

353

na: not available.

Source: Statistics Canada Catalogue 72-007, Provincial & Territorial Government Employment, and Cansim Main Base.

J	5132	343
F	4882	350
M	4906	367
A	4853	350
M	5253	362
S	81 5930	421
O	6211	370
C	6209	349
A	5880	342.

TABLE 83
FEDERAL GOVERNMENT EMPLOYMENT AND PAYROLL IN
PRINCE EDWARD ISLAND

Year	General Government		Federal Government Enterprise		Average Number of Military Personnel
	Total Payroll (\$'000)	Average Number of Employees	Total Payroll (\$'000)	Average Number of Employees	
1983	75,771	2,976 ✓	23,944 ✓	-1,007	936 ✓
1984	88,929	3,300	25,072	992	970
1985	96,801	3,512	25,087	963	964
1986	100,595	3,466	24,504	926	955
1987	103,944	3,405	27,730	986	953
1988	106,354	3,395	26,618	933	939
1989	111,875	3,376	27,597	920	916
1990	112,558	3,180	27,622	885	751
1989					
Jan.- March	28,109	3,373	7,176	908	939
Apr.- June	26,283	3,393	6,476	937	944
July - Sept.	30,441	3,469	7,421	938	899
Oct.- Dec.	27,042	3,268	6,524	897	884
1990					
Jan.- March	26,963	3,254	6,958	883	877
Apr.- June	27,568	3,241	6,261	866	821
July - Sept.	31,437	3,236	7,680	912	678
Oct.- Dec.	26,590	2,989	6,723	880	626

2940

Source: Statistics Canada Catalogue 72-004, Federal Government Employment and Cansim Main Base. 8778

JAN	9,329.7 8739	2963	837	621
FEB	27610 11,256	2947	774	618
MAR	10,447 3650	2910	789	609
APR	9224	2907	786	592
MAY	9111	3187	789	573
JUNE	8865	3061	791	555
JULY		3038	961	503
AUG		2899	973	387
SEPT		2427	896 869	151

Military Pay

Changes for 1991

Table 39, 6, 7, 14, 18, 27, :

55, 61,

63, 64,

71, 74,

Tot 78/79 - one has 3 years data,
1B next 2.?

PAT FILE	32	27	45	1
to	27	67	51	1.

std F1 in (1,1)