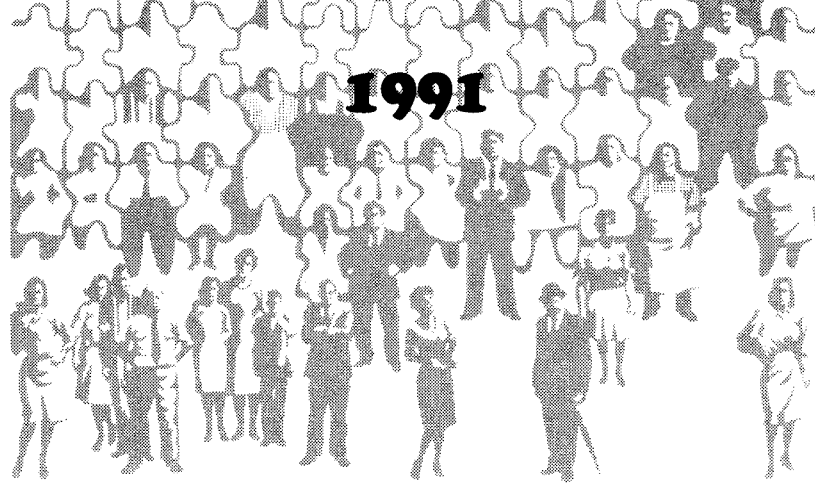


**PROVINCE OF PRINCE EDWARD ISLAND**

**Eighteenth Annual**  
**STATISTICAL REVIEW**

**1991**



**MARCH 1992**



**PROVINCE OF PRINCE EDWARD ISLAND**

**Eighteenth Annual  
STATISTICAL REVIEW**

**1991**

Prepared by:  
Economics, Statistics and Fiscal Analysis Division  
Department of Finance  
March, 1992

## **PREFACE AND ACKNOWLEDGEMENTS**

The statistics included in this publication have been obtained from several sources, including Statistics Canada, Provincial Government Departments, and other institutions and agencies.

Thanks to Statistics Canada, to all provincial departments and others who supplied data, to Janice MacDonald for putting the report together, Roy Spence for preparing the Economic Review and Ada Lowther for help in preparation of the Review.

Appreciation is also extended to Anne MacMicken from the Office of the Queen's Printer for her valuable assistance in the production of this publication.

John Palmer,  
Director

# TABLE OF CONTENTS

<b>I.</b>	<b>Facts About Prince Edward Island</b> .....	iv
<b>II.</b>	<b>Prince Edward Island Economic Review 1991</b> .....	1

## TABLES

### **III. Population Vital Statistics and Labour Force**

1.	Population and Vital Statistics, Prince Edward Island .....	16
2.	In-Migration to Prince Edward Island by Province of Origin .....	17
3.	Out-Migration from Prince Edward Island by Province of Destination .....	18
4.	Components of International and Interprovincial Migration, Prince Edward Island 1967-68 to 1990-91 .....	19
5.	Population by Sex and Age Group, Prince Edward Island .....	20
6.	Population of Cities, Towns, Villages and Indian Reserves in Prince Edward Island 1986 & 1991 .....	21
7.	1986 Census Data on Population, Dwellings, Households and Families ..	22
8.	Prince Edward Island Working Age Population, Labour Force, Employment and Unemployment, Annual Averages 1981-1991, Employment and Unemployment, by Sex, Annual Averages 1987-1991 ..	23
9.	Estimates of Employees by Industry, Prince Edward Island, 1985-1991 ..	24
10.	Average Weekly Wages and Salaries, Total Wages and Salaries for Prince Edward Island .....	25
11.	Unemployment Insurance Statistics Prince Edward Island, 1977-1991 ..	26

### **IV. General Economic Indicators**

12.	Personal Income, Prince Edward Island 1986-1990 .....	27
13.	Government Transfer Payments to Persons, Prince Edward Island 1986-1990 .....	28
14.	Gross Provincial Expenditures, Prince Edward Island, 1986-1990 .....	29
15.	Provincial Gross Domestic Product, by Component, Prince Edward Island 1986-1990 .....	30
16.	Performance of Gross Domestic Product, Prince Edward Island Relative to Canada .....	31
17.	Provincial Gross Domestic Product at Factor Cost for Selected Industries, Prince Edward Island 1984-1987 .....	32
18.	Gross Domestic Product by Industry, Prince Edward Island (Constant \$, 1986) 1986-1991 .....	33

19.	Public and Private Investment by Type and by Industry, Prince Edward Island 1986-1991 .....	34
20.	All Items Consumer Price Index, Charlottetown - Summerside 1986 = 100 .....	35
21.	All Items Consumer Price Index, Canada, 1986 = 100 .....	36
22.	Consumer Price Index, Charlottetown - Summerside, Annual Averages of Major Components, 1986 = 100 .....	37
23.	Consumer Price Index, Canada, Annual Averages of Major Components, 1986 = 100 .....	38
24.	Canadian Industrial Product Price Indexes for Selected Commodities 1986-1991 and by Month 1991 .....	39
25.	Value of Retail Trade, Prince Edward Island .....	40
26.	New Motor Vehicle Sales, Prince Edward Island 1983-1991 .....	41
27.	International Exports from Prince Edward Island by Principal Trading Areas and by Major Commodities .....	42
28.	Personal Income Tax Returns, Prince Edward Island, Income & Taxes Paid, 1985-1989, All returns by Counties and Selected Localities, 1989 .....	43
29.	Personal Income Tax Returns, 1989 Taxation Year, All Returns by Income, Prince Edward Island .....	44
30.	Personal Income Tax Returns, 1989, All Returns by Occupation for Prince Edward Island .....	45

## V. Sectoral Development

### A. Economic Statistics

31.	Value of Building Permits by Type, Prince Edward Island, 1985-1991 .....	46
32.	Number of Building Permits by Type of Dwelling, Prince Edward Island, 1985-1991 .....	46
33.	Number of Building Permits by County, Prince Edward Island .....	47
34.	Housing Starts, Completions and Under Construction by Year and Quarter for Prince Edward Island, 1987-1991 .....	48
35.	Housing Starts by Type of Unit, Prince Edward Island, 1975-1991 .....	49
36.	Farm Cash Receipts, Prince Edward Island, 1986-1991 .....	50
37.	Income of Farm Operators from Farming Operations, Prince Edward Island, 1982-1990 .....	51
38.	Capital Value of All Farms in Prince Edward Island, 1983-1990 .....	52
39.	Farm Debt Outstanding as at December 31, Classified by Lender .....	53
40.	Farm Product Price Index Prince Edward Island, 1986 = 100 .....	54

41.	Comparison of Selected Census Farm Data, Prince Edward Island, 1976, 1981 & 1986. . . . .	55
42.	Census Farm Data, Classified by Sales Class, Prince Edward Island, 1976, 1981 & 1986. . . . .	56
43.	Farms with Sales of \$2,500 or More, Classified by Type of Product, Prince Edward Island 1976, 1981 & 1986. . . . .	57
44.	Selected 1986 Census of Agriculture Statistics by County, Prince Edward Island . . . . .	58
45.	Estimates of Primary Forest Production, Prince Edward Island . . . . .	59
46.	Fish Landings and Value, Prince Edward Island . . . . .	59
47.	Prince Edward Island Lobster Landings Statistics Comparisons, Total Pounds . . . . .	60
48.	Average Price Received by Prince Edward Island Fishermen, Selected Years and Species . . . . .	61
49.	Total Number of Tourists via Auto Vehicles, Prince Edward Island (May 15th - October 31st), 1985-1991 . . . . .	62
50.	Amount Expended by Non-Resident Tourists by Category All Modes (May 15th - October 31st) 1985-1991 . . . . .	62
51.	Tourist Parties by Mode of Travel, 1991 Season Prince Edward Island (May 15th - October 31st). . . . .	63
52.	Prince Edward Island Tourist Auto Parties by Origin (May 15th - October 31st), 1991. . . . .	63
53.	Prince Edward Island Restaurant, Caterer and Tavern Receipts by Kind of Business for 1986-1991 and by Month 1991 . . . . .	64
54.	Number of Locations and Total Receipts from Major Accommodation Groups, Prince Edward Island . . . . .	65
55.	Principal Statistics of Prince Edward Island Manufacturing Industries . . . . .	66
56.	Valued Added by Major Groups and Industry, Prince Edward Island 1984-1988 . . . . .	67
57.	Estimated Value of Shipments in Manufacturing Industries-Prince Edward Island. . . . .	68
58.	Prince Edward Island Electricity Statistics . . . . .	69
59.	Sales of Refined Petroleum Products, Prince Edward Island 1985-1991. . . . .	70
60.	Schedule of Gasoline Sales in Prince Edward Island for the Fiscal Year Ended March 31st (Taxed and Tax Exempt Gasoline). . . . .	70
61.	Transportation Statistics, Prince Edward Island - Ferry Service . . . . .	71
62.	Water Freight-Tonnes, Prince Edward Island . . . . .	72
63.	Prince Edward Island Shipping, Number of Arrivals and Departures, by Port . . . . .	72

64.	Island TransitPassenger Traffic, Charlottetown to Tignish - Year Round . . . . .	72
65.	Rail Freight-Carloads, Prince Edward Island 1982-1989 . . . . .	73
66.	Air Passengers to and from Prince Edward Island 1987-1991 . . . . .	73
67.	Prince Edward Island Motor Vehicle Registrations 1981-1990 . . . . .	74

**B. Social Statistics**

68.	Prince Edward Island School Enrolment . . . . .	74
69.	Post-Secondary Enrolments, Prince Edward Island . . . . .	75
70.	Holland College Enrolments 1985/86-1990/91 . . . . .	76
71.	Prince Edward Island Educational Expenditures . . . . .	77
72.	Prince Edward Island Health and Hospital Care Statistics . . . . .	77
73.	Active Treatment Hospitals, Prince Edward Island . . . . .	78
74.	Physicians Services, Prince Edward Island . . . . .	78
75.	RCMP Crime Statistics, Prince Edward Island . . . . .	79
76.	Persons Held in Prince Edward Island Jails . . . . .	80
77.	Persons Held in Prince Edward Island Youth Facilites, Total Days by Custody and Youth Facility . . . . .	81
78.	Entries Under the Supreme Court of Prince Edward Island Fiscal Year Ended March 31st . . . . .	82

**C. Government**

79.	Province of Prince Edward Island Revenue \$, Fiscal Years Ended March 31st, 1989, 1990 and 1991 . . . . .	83
80.	Province of Prince Edward Island Ordinary Expenditure \$, Fiscal Years Ended March 31st, 1989, 1990 and 1991 . . . . .	84
81.	Revenues and Expenditures by All Levels of Government, National Accounts Basis, Prince Edward Island 1986-1990 . . . . .	85
82.	Prince Edward Island Provincial Government Employment . . . . .	86
83.	Provincial Government Employment and Payroll in Prince Edward Island . . . . .	87
84.	Federal Government Employment and Payroll in Prince Edward Island . . . . .	88

# PRINCE EDWARD ISLAND

## ECONOMIC REVIEW 1991

### 1. INTRODUCTION

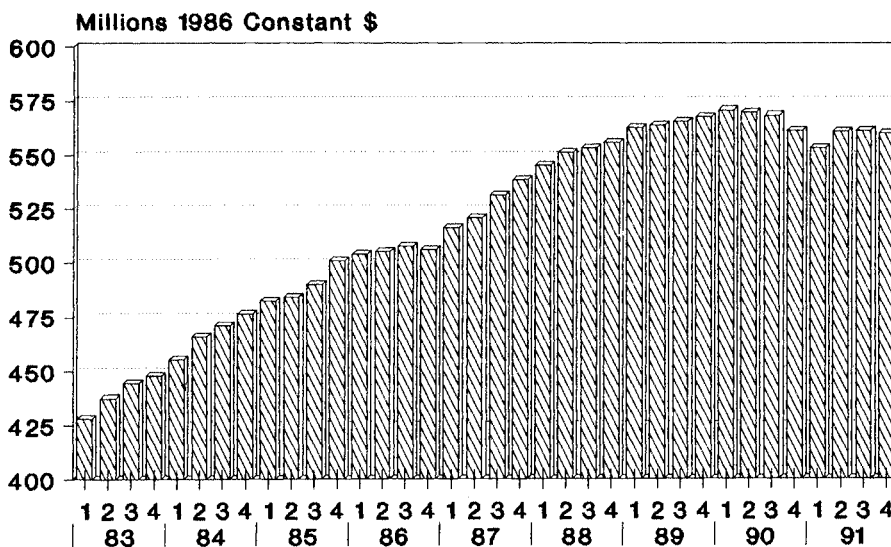
The Annual Statistical Review presents a commentary on the provincial economic situation during the past year. It begins with a brief discussion on the national economic situation. The review is based on statistical information available at the time of publication and in some cases the data are preliminary and therefore subject to revision.

### 2. ECONOMIC SUMMARY

The Canadian economy was in decline from the second quarter of 1990 to the first quarter of 1991. Following this there were two quarters of growth but the recovery stalled in the last quarter of the year. Overall, Gross Domestic Product in Canada in 1991 in constant dollars declined by 1.5 per cent. The level of activity in the final quarter of 1991 was less than that achieved in early 1989. Diagram 1 shows the pattern of change in the Canadian economy from 1983 to 1991. The recession was led by a downturn in consumer spending on durables and semi-durables, residential construction, and non-residential construction. The unemployment rate in Canada rose to 10.3 per cent in 1991, the highest rate since 1984. This compares to the pre-recession low of 7.5 per cent achieved in 1989. The introduction of the federal Goods and Services Tax and other indirect tax increases boosted the annual rate of Canadian consumer price inflation to 5.6 per cent in 1991. However, throughout the year, the year over year increases in the Consumer Price Index were on a downward trend, and fell to 3.8 per cent by December 1991.

Diagram 1

**REAL GROSS DOMESTIC PRODUCT  
CANADA, 1983-91**



Monetary conditions in both the United States and Canada eased in 1991 following the run-up of interest rates in 1989 and early 1990. This was largely in response to weak economic conditions. The Bank Rate by the end of 1991 was 7.7 per cent, its lowest level since April 1987. The prime business lending rate by December 1991 was 8.0 per cent, its lowest rate since mid-1973. The Canadian dollar was strong in 1991 and reached 88.5¢ in November, its highest level since November 1978.

The Prince Edward Island economy did not escape the national recession. Provincial Gross Domestic Product is estimated by the Conference Board of Canada to have decreased by 1.1 per cent in constant dollars in 1991. A major difficulty for the provincial economy in 1991 was the discovery of PVYn in the potato crop. This potato virus damages crops such as tobacco, but is harmless to human consumption. But it resulted in an embargo on Prince Edward Island seed potato sales to the United States. The closure of the Summerside airbase also occurred in 1991 adding to the Province's economic problems.

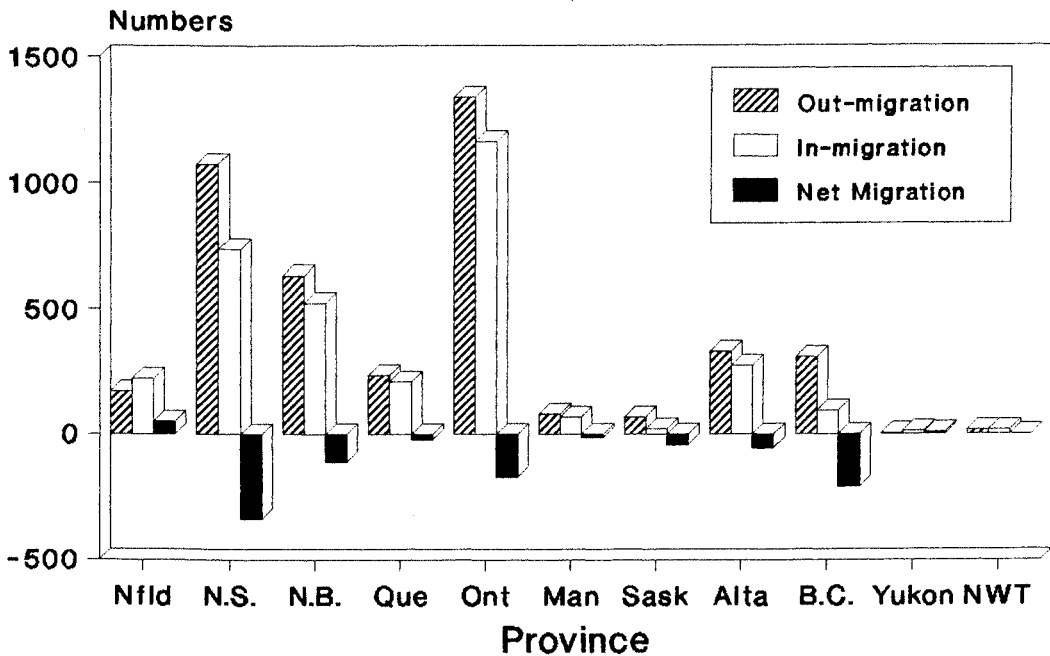
These factors were additional to the general consequences of the national and international economic malaise that characterized 1991.

### 3. POPULATION

Statistics Canada's latest estimate of Prince Edward Island's population was 130,700 on June 1st, 1991. The 1991 Census count which was released shortly before time of publication was

**Diagram 2**

**INTERPROVINCIAL MIGRATION  
1990-91, P.E.I.**



129,765. Net out-migration from the Island of 822 persons occurred over the period June 1st, 1990 to May 31st, 1991 which offset growth in the population due to natural increase (births minus deaths) of 798 persons. Therefore, the Island's population at June 1st, 1991 remained unchanged from June 1st, 1990. The gross flows of interprovincial migrants between Prince Edward Island and the other provinces and territories are shown in Diagram 2. The largest population movements between the Island and other provinces are to and from Ontario, Nova Scotia, and New Brunswick.

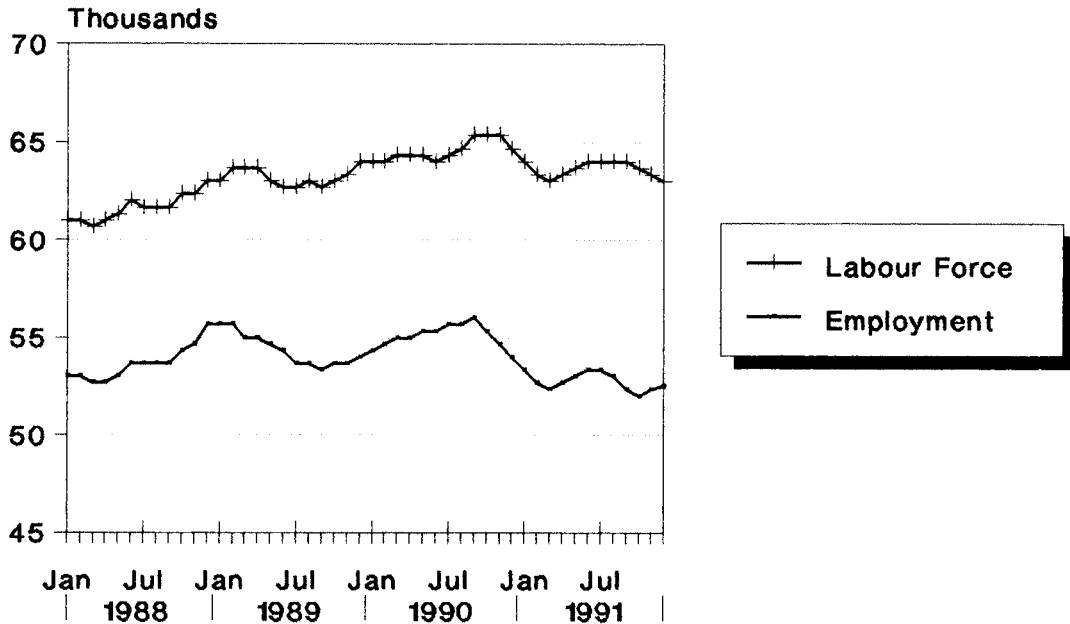
Statistics on the Island's population show that a major decline took place between June 1st, 1991 and the end of the year. By January 1st, 1992 the Island's population is estimated to have dropped to 129,800. Net interprovincial out-migration in the last seven months of 1991 totaled 1,500 persons. Most of the out-migration is likely due to the transfer of personnel associated with the closure of the Summerside airbase in the last half of 1991.

#### 4. LABOUR FORCE

The recession in 1991 was apparent in the national and provincial labour markets. Employment in Canada declined by 1.8 per cent in 1991, with declines of 3.4 per cent in Ontario, and 2.2 per cent in Quebec. Diagram 3 shows trends in the Island's labour force and level of

**Diagram 3**

**LABOUR FORCE & EMPLOYMENT  
Prince Edward Island, 1988-91**



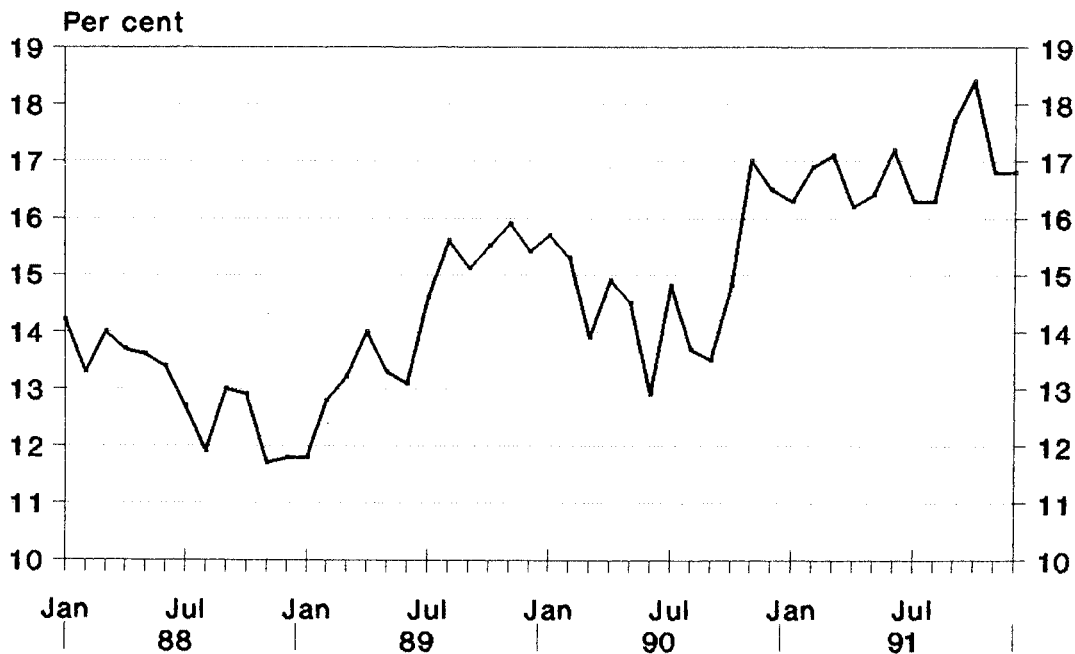
Moving Average of Seasonally Adjusted Labour Force Survey data.

employment on a seasonally adjusted basis for the period 1988 to 1991. Employment on Prince Edward Island fell 3.9 per cent in 1991. This decline in 1991 was primarily in the construction, retailing, and services sectors. Employment declines in 1991 on Prince Edward Island had a markedly different impact on males and females. The employment of males declined by 5.6 per cent in 1991 compared to a decline of only 2.4 per cent for females.

Prince Edward Island's unemployment rate in 1991 rose to 16.8 per cent, up from 14.9 per cent in 1990 and 14.1 per cent in 1989. The seasonally adjusted unemployment rate reached a high of 18.4 per cent in October 1991. The increase in unemployment in 1991 was mostly attributable to the decline in employment. The weak economy also produced a decline in the labour force as the participation rate fell and a small drop in the source population occurred. The Island's labour force participation rate declined to 65.1 per cent in 1991 from 66.0 per cent in 1990.

**Diagram 4**

**UNEMPLOYMENT RATE  
P.E.I., 1988-91**

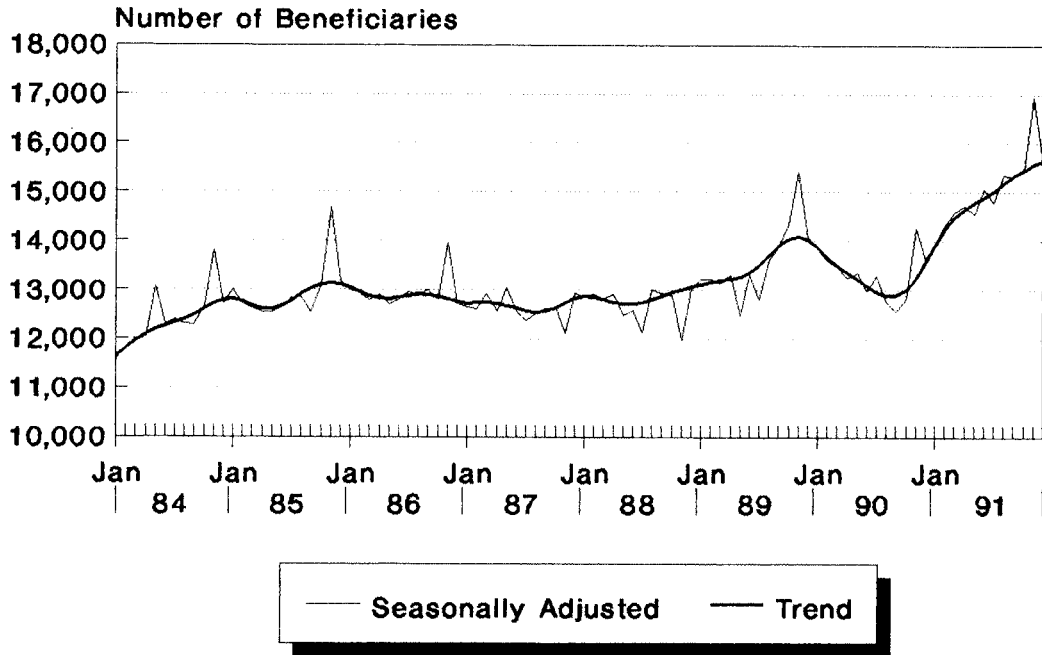


**Seasonally Adjusted**

The number of Unemployment Insurance beneficiaries increased substantially in 1991. Diagram 5 shows the number of Unemployment Insurance beneficiaries per month on a seasonally adjusted basis. The trend line smooths out short-term irregular month-to-month movements. The diagram shows that the trend in the total number of Unemployment Insurance beneficiaries exceeded 15,000 per month late in 1991. This compares to annual levels of under 13,000 per month in 1987 and 1988.

**Diagram 5**

**UNEMPLOYMENT INSURANCE BENEFICIARIES  
Prince Edward Island, 1984-91**



**5. INFLATION**

The All-Items Consumer Price Index for Charlottetown-Summerside increased 7.5 per cent in 1991, its largest increase since 1983. In comparison, the annual inflation rate for the period 1984 to 1990 was between 2.1 and 5.0 per cent. The higher rate of consumer price inflation in 1991 was mainly due to the implementation of the Goods and Services Tax, higher petroleum prices early in the year, higher tobacco taxes at both the federal and provincial level, and higher food prices in the spring of 1991.

**Diagram 6**

**ANNUAL PERCENTAGE CHANGE IN CPI  
P.E.I. & CANADA, 1979-1991**

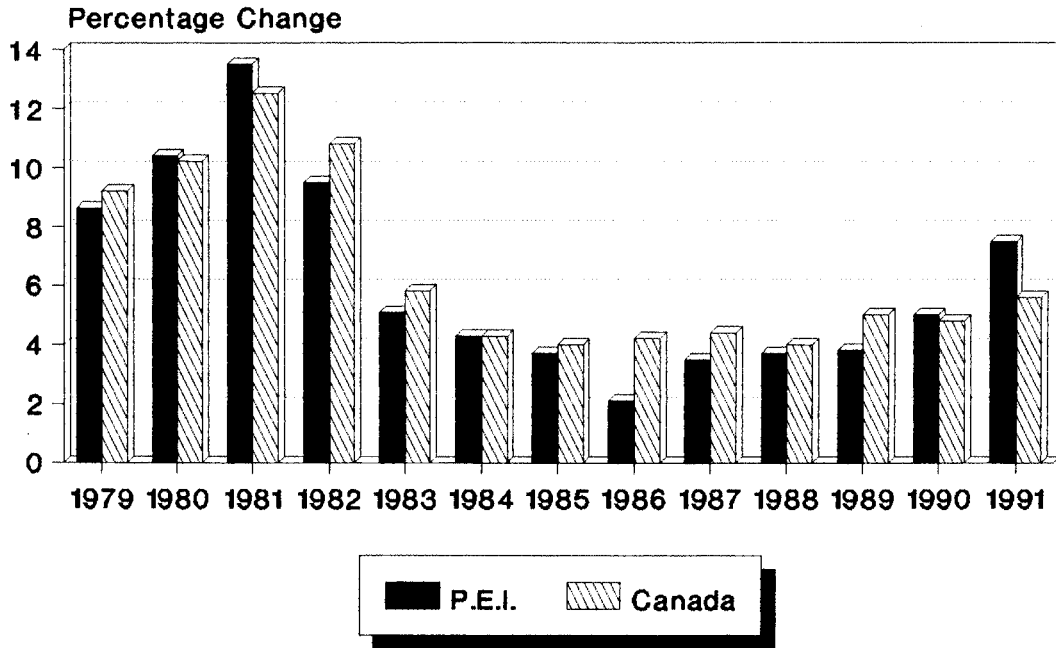


Diagram 6 shows the annual rate of increase in the Consumer Price Index for Canada and Charlottetown-Summerside.

**Comparison of Annual Percentage  
Increases in Consumer Price Index, 1991**

<u>Components</u>	Charlottetown-Summerside	Canada
Food .....	6.4	4.8
Housing.....	6.2	4.4
Clothing.....	9.4	9.4
Transportation.....	4.9	1.8
Health & Personal Care.....	7.7	7.0
Recreation & Education.....	6.4	7.4
Tobacco & Alcohol.....	<u>22.1</u>	<u>17.1</u>
All Items .....	7.5	5.6
<u>Special Aggregations</u>		
Energy.....	14.5	4.9
All Items Excluding Food & Energy.....	7.0	5.8

The above table shows the increases in the components of the Consumer Price Index for Charlottetown-Summerside and Canada for 1991. Part of the increase in the consumer price inflation rate in Canada has been due to the introduction of the federal Goods and Services Tax. This tax had a large impact on the prices of clothing, food purchased from restaurants, and reading materials. These items were exempt from the old federal sales tax but are now subject to the Goods and Services Tax. The tobacco and alcohol component of the Charlottetown-Summerside Consumer Price Index in 1991 rose by 22.1 per cent. Tax increases on tobacco at both the federal and provincial levels in 1991 contributed to a 34.8 per cent increase in tobacco prices on Prince Edward Island in 1991.

## **6. PERSONAL INCOME**

The value of personal income on Prince Edward Island in 1990 is estimated by Statistics Canada to have been \$2,118 million, an annual increase of 6.0 per cent. Complete information on incomes is only available to 1990, but data on major components of personal income in 1991 indicate slower growth. Wages and salaries, the largest component of personal income, increased by only 1.9 per cent in 1991 compared to an increase of 6.1 per cent in 1990. On a year over year basis, wages and salaries were in decline during September, October, and December.

Unemployment Insurance benefits paid on Prince Edward Island increased substantially in 1991 to reach \$189.0 million. This represents an increase of 22.9 per cent over their level in 1990. Contributing to this rise was a 16.0 per cent increase in the number of weeks paid to beneficiaries and a 5.8 per cent higher average weekly payment.

The combination of rising consumer prices, weak income growth and falling employment produced the weak economic situation for the Island in 1991.

## **7. GROSS DOMESTIC PRODUCT**

Prince Edward Island's Gross Domestic Product at Market Prices in 1990 (the most recent year for which provincial economic accounts data is available) was \$2.0 billion. Gross Domestic Product in constant dollars for Prince Edward Island in 1991 is estimated by the Conference Board of Canada to have declined by 1.1 per cent. Output from the goods-producing industries on Prince Edward Island is estimated by the Conference Board of Canada to have increased by 0.3 per cent in 1991, compared to a decline of 1.6 per cent for the service industries. Industries that suffered major declines in 1991 were construction and retailing.

## **8. SECTOR DETAIL**

### **(a) Agriculture**

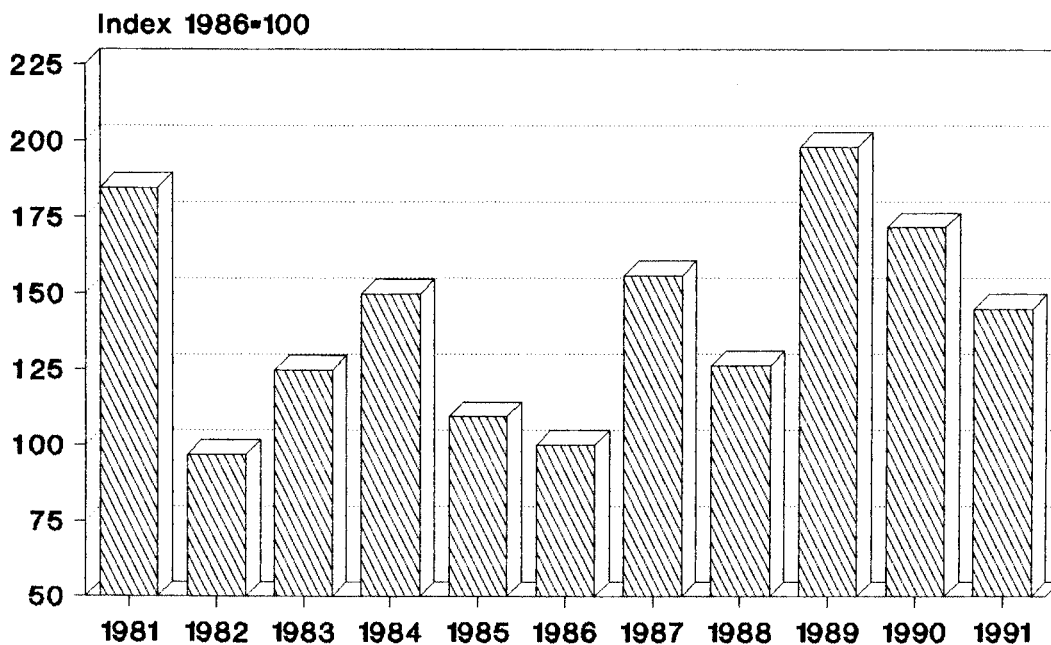
Farm cash receipts on Prince Edward Island in 1991 valued \$238.7 million, a decline of 2.9 per cent from 1990. Receipts from the sale of potatoes in 1991 declined by 13.7 per cent to total \$96.8 million in large part as a result of the PVYn problem. Compensation paid to farmers from the federal and provincial governments for losses as a result of PVYn totaled \$9.8 million in 1991. Potato production on the Island declined to 18.1 million hundred weight (cwt) in 1991 from 18.8 million cwt in 1990, partially as a result of the

PVYn problem. Although 78,000 acres of potatoes were planted in potatoes in 1991 (compared to 75,000 in 1990) approximately 4,000 acres of the potato crop were killed down under orders from Agriculture Canada due to suspicion that the fields were infected with the virus.

A major sale of potatoes to Algeria in 1991 helped farm cash receipts. International exports of potatoes to Algeria valued \$10.8 million in 1991, with all of these sales taking place in the October to December months.

Diagram 7 shows Statistics Canada's potato price index (1986 = 100) for Island potatoes for the calendar years 1981 to 1991. The diagram indicates that potato prices weakened significantly during 1991 compared to the relatively high prices received for the 1988 and 1989 crops which were also marketed in 1989 and 1990 respectively. Prices declined by 15.5 per cent in 1991.

**Diagram 7**  
**POTATO PRICE INDEX**  
**P.E.I., 1981-91**



Receipts from the sale of cattle, hogs, and dairy products in 1991 dropped to \$97.9 million from \$99.7 million in 1990. Receipts from the sale of cattle in 1991 declined by 1.8 per cent. Receipts from the sale of hogs in 1991 declined substantially to \$21.5 million from \$24.4 million in 1990. Farm cash receipts for dairy products increased by 4.1 per cent to a

level of \$39.3 million preventing an even larger decline in livestock receipts. The volume of milk and cream produced on Prince Edward Island in 1991 remained unchanged from the level of production in 1990.

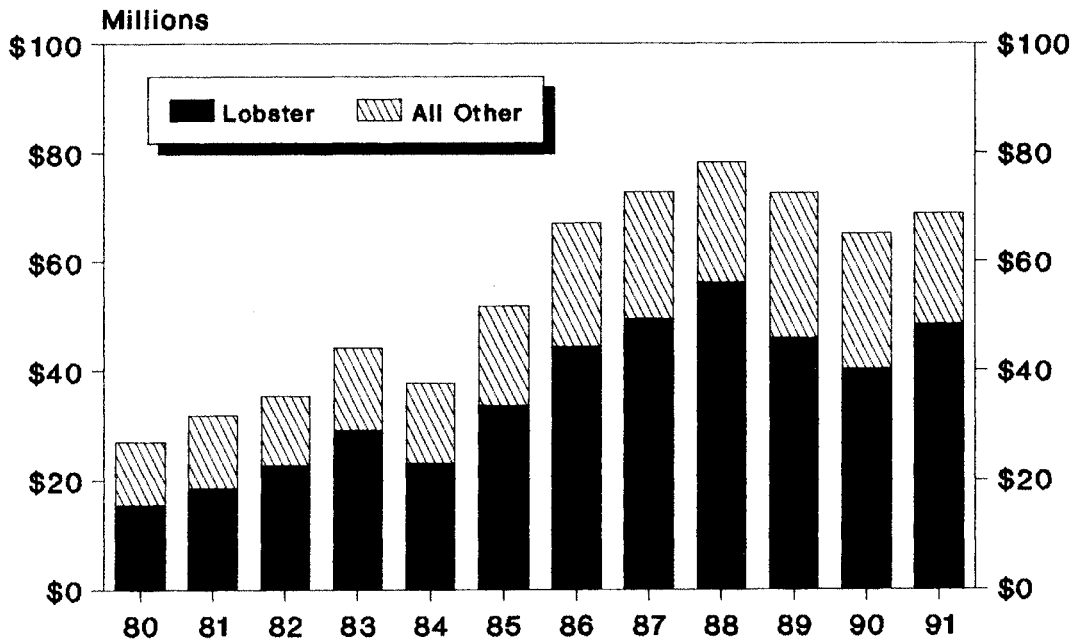
Support payments to farmers rose 57.7 per cent in 1991 to value \$22.7 million. A large amount of compensation payments were made to potato producers for PVYn. Payments under the Gross Revenue Insurance Plan (GRIP), a federal/provincial program that was introduced in the spring of 1991, totaled \$2.0 million. These were received by farmers in the last quarter of 1991. Supplementary payments to Island dairy farmers totaled \$4.8 million in 1991, down slightly from \$4.9 million in 1990. Other major direct payments to farmers included payments from the national tripartite hog stabilization program and crop insurance.

**(b) Fishing**

The value of fish landings recovered somewhat in 1991 after experiencing two years of decline in 1989 and 1990. Higher prices for lobster and increased landings resulted in the value increasing to \$48.5 million. Total fish landings valued \$69.0 million in 1991. The average price of lobster in 1991 increased to \$2.13 per pound compared to \$1.80 per pound in 1990. Prices were still well below the record price of \$2.63 per pound set in 1987. Diagram 8 shows the value of lobster landings and all other types of fish caught. The volume of lobster landed reached a record level of 22.8 million pounds in 1991.

**Diagram 8**

**VALUE OF FISH LANDINGS  
P.E.I., 1980-91**



Landings of pelagic and estuarial species of fish declined significantly in 1991 due mostly to a 40.4 per cent decrease in landings of herring. Prices for herring in 1991 were 4¢ per pound, the lowest prices received for herring since 1972. The value of pelagic and estuarial landings declined 46.2 per cent to value \$2.3 million in 1991.

Island fishermen in 1991 caught 40.2 million pounds of groundfish and this catch valued \$7.1 million. This was comprised of mostly redfish, cod, hake, and flounder.

**(c) Forestry**

Statistical information on the Prince Edward Island forestry sector is limited. The Prince Edward Island Department of Energy and Forestry estimates that total forest production in 1991 was 411,000 cubic metres of wood compared to 454,000 cubic metres in 1990. Of the total production in 1991 fuelwood accounted for 216,000 cubic metres.

Manufacturing shipments from the wood products industry in 1991 amounted to \$6.7 million, a decrease of 26.0 per cent from 1990. The industry consists of sawmills, planing mills, millwork industries, and a wooden box and pallet industry.

**(d) Manufacturing**

Manufacturing shipments from Prince Edward Island totaled \$446.7 million in 1991, a decline of 2.4 per cent from 1990. Monthly employment in the Island's manufacturing sector averaged 3,200 in 1991, an increase of 4.2 per cent over the level in 1990. Prince Edward Island's manufacturing sector in 1991 experienced major expansions in potato processing facilities both at Cavendish Farms and with the new McCain's potato plant. Shipments from the fish products industry declined by 1.0 per cent from the level of 1990 when large inventories from 1989 were being shipped.

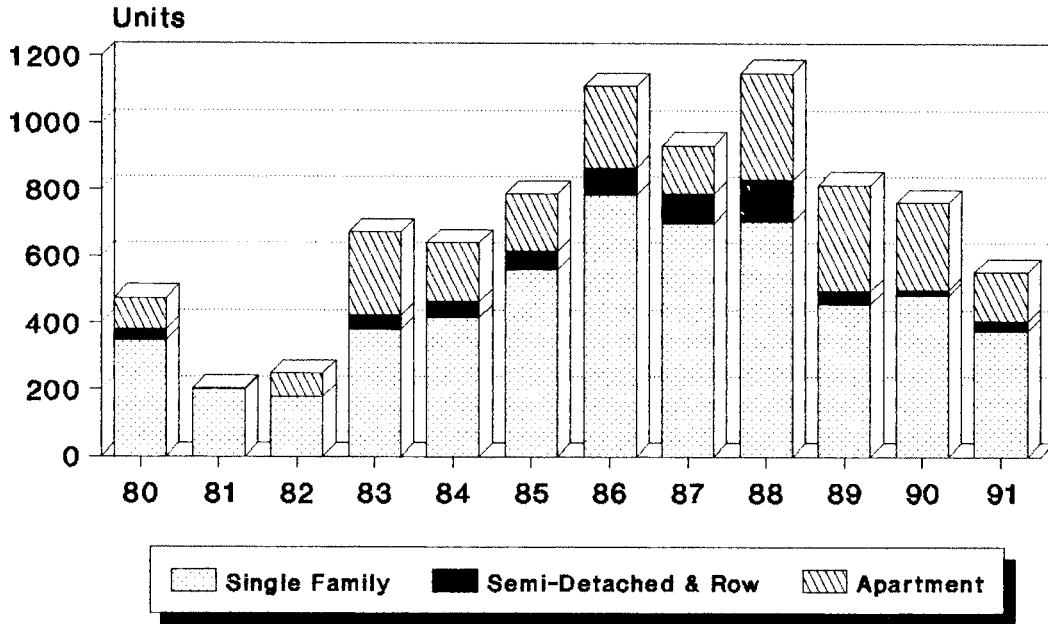
**(e) Construction**

Housing starts on Prince Edward Island in 1991 declined to 553 units compared to 762 units in 1990, and 815 units in 1989. The closure of the Summerside airbase had a significant impact on housing starts in the Summerside area. Since the announcement of the airbase closure, an average of only 21 units per year have been started in the Summerside area. This compares to 174 units in 1988, prior to the announcement of the base closure.

Diagram 9 shows Prince Edward Island housing starts by the following types: single family detached dwellings, semi-detached and row housing, and apartments. Construction of single family dwellings and apartments were both down in 1991, to about one-half the level of activity in 1988.

**Diagram 9**

**HOUSING STARTS BY TYPE  
P.E.I., 1980-91**



According to Statistics Canada's Private and Public Investment Survey, capital spending on non-residential construction on Prince Edward Island in 1991 increased by 13.4 per cent. This increase was largely due to capital spending by institutions and government departments rising by 28.9 per cent, while business capital spending decreased by 2.8 per cent over the level of 1990. Spending on machinery and equipment increased by 34.6 per cent in 1991, with large increases in both the manufacturing and miscellaneous utilities industries. Construction of both Revenue Canada's National Goods and Services Processing Centre in Summerside and Agriculture Canada's Health of Animal and Plants Pathology Laboratory in Charlottetown were started in 1991.

**(f) Transportation and Utilities**

Two ferry systems connect the mainland to Prince Edward Island. An all-season ferry system operates between Borden, Prince Edward Island and Cape Tormentine, New Brunswick while the other ferry system sails between Wood Islands, Prince Edward Island and Caribou, Nova Scotia in the May to December months. Another ferry operates between Souris, Prince Edward Island and Grindstone, Magdalen Islands, Quebec. These three ferry systems in 1991 carried 2.3 million passengers, 800,000 cars and pick-up trucks, and 171,000 commercial vehicles. Passenger and auto traffic declined approximately 2.0 per cent from the levels in 1990.

Ferry systems operating between the Island and the mainland implemented a one-way ticketing system in April of 1991. Travelers now pay fees only upon leaving Prince Edward Island.

Electricity sales on Prince Edward Island in 1991 totaled 760,700 megawatt hours, an increase of 1.1 per cent over sales in 1990. Of the total electricity sales, 9.3 per cent was generated on Prince Edward Island.

**Diagram 10**

**PEI ENERGY COST INDEX  
500kwh Electricity**

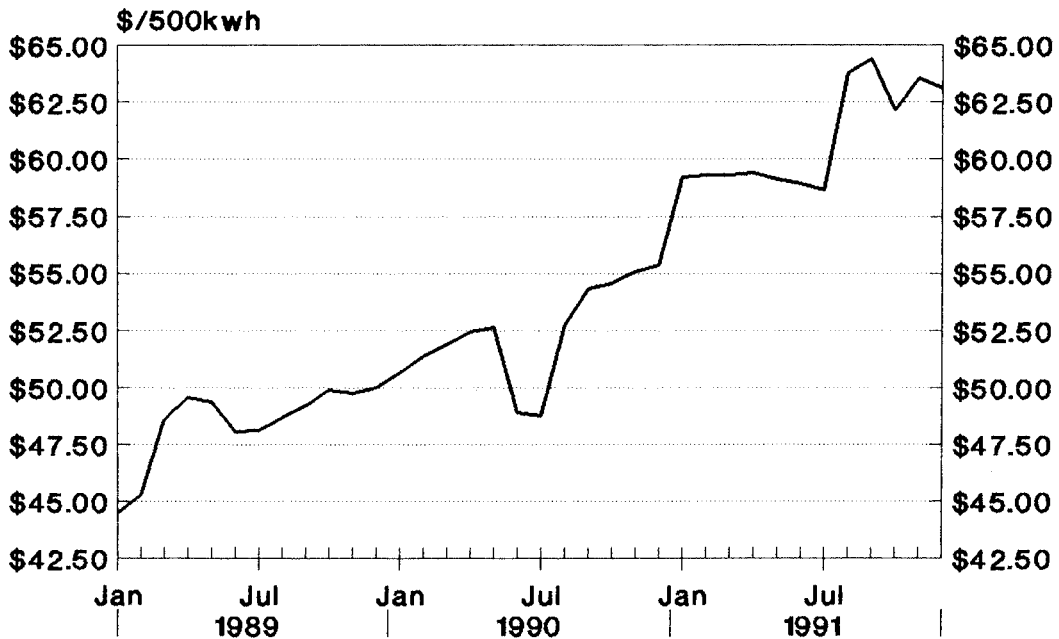


Diagram 10 shows the monthly Prince Edward Island Energy Cost Index (for 500 kilowatt hours of electricity in Charlottetown) over the period 1989 to 1991. The index rose by 16.3 per cent in 1991 compared to 1990. Major reasons for the rise include the impact of higher oil prices during the Persian Gulf War, the implementation of the Goods and Services Tax which applied to electricity bills, an increase in the basic service charge for electricity, and a move by Maritime Electric towards uniform rates between city and rural customers.

**(g) Retail Sales**

Retail spending in Canada and Prince Edward Island declined significantly in 1991. In Canada, retail sales dropped by 6.6 per cent in current dollar terms. The major causes of this national decline were the impact of the national recession, cross-border shopping, low consumer confidence, and the introduction of the federal Goods and Services Tax.

The value of retail sales in current dollars on the Island in 1991 declined by 10.0 per cent. This was the result of falling tourism and falling total consumer spending. The decline in new motor vehicle sales in 1991 illustrates the weakness in consumer spending on Prince Edward Island. New motor vehicle sales in 1991 declined by 18.2 per cent in terms of units, and 22.5 per cent in terms of value. Employment in the Island's retail sector declined, averaging 5,100 per month in 1991, a drop of 1.8 per cent from the level of 1990.

**Diagram 11**

**MONTHLY RETAIL RATE  
P.E.I., 1984-91**

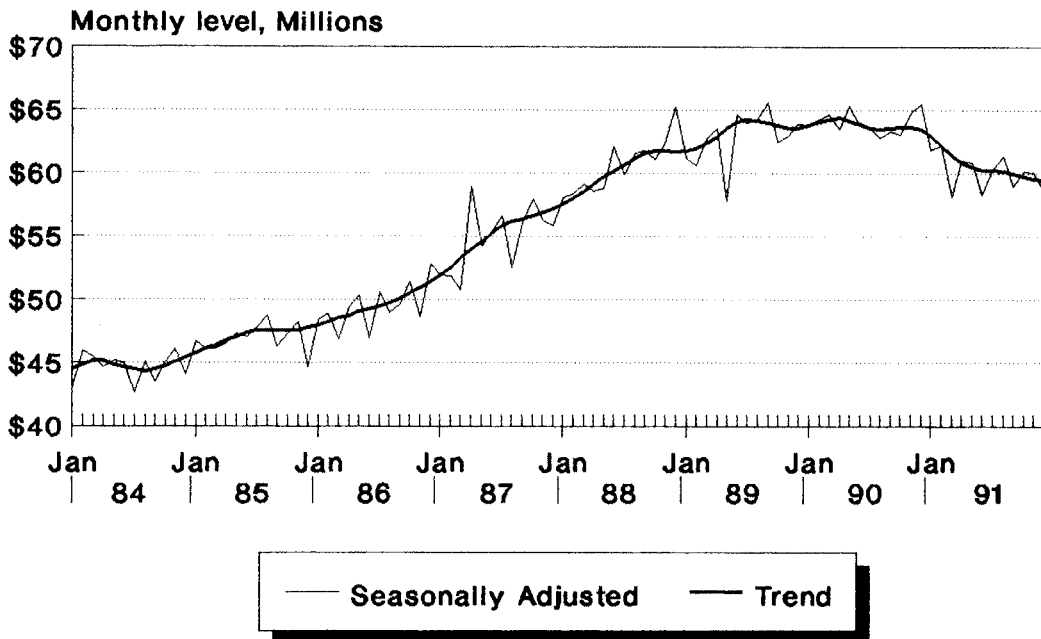


Diagram 11 shows the seasonally adjusted level of retail sales on Prince Edward Island adjusted for the removal of the Federal Sales Tax. Part of the recorded decline in retail sales is due to the removal of the Federal Sales Tax (also referred to as the Manufacturers Sales Tax) with the implementation of the Goods and Services Tax. Retail sales estimates by Statistics Canada exclude the federal GST implemented in 1991, but sales data in prior years included the Federal Sales Tax which was removed with the start of the GST. Therefore, the retail trade data in 1991 are not strictly comparable with data in 1990 and prior years. At the Canada level retail sales are estimated to be 4.2 per cent lower due to the removal of the Federal Sales Tax.

**Diagram 12**

**NUMBER OF NEW MOTOR VEHICLES SOLD  
By Manufacturer, P.E.I., 1980-91**

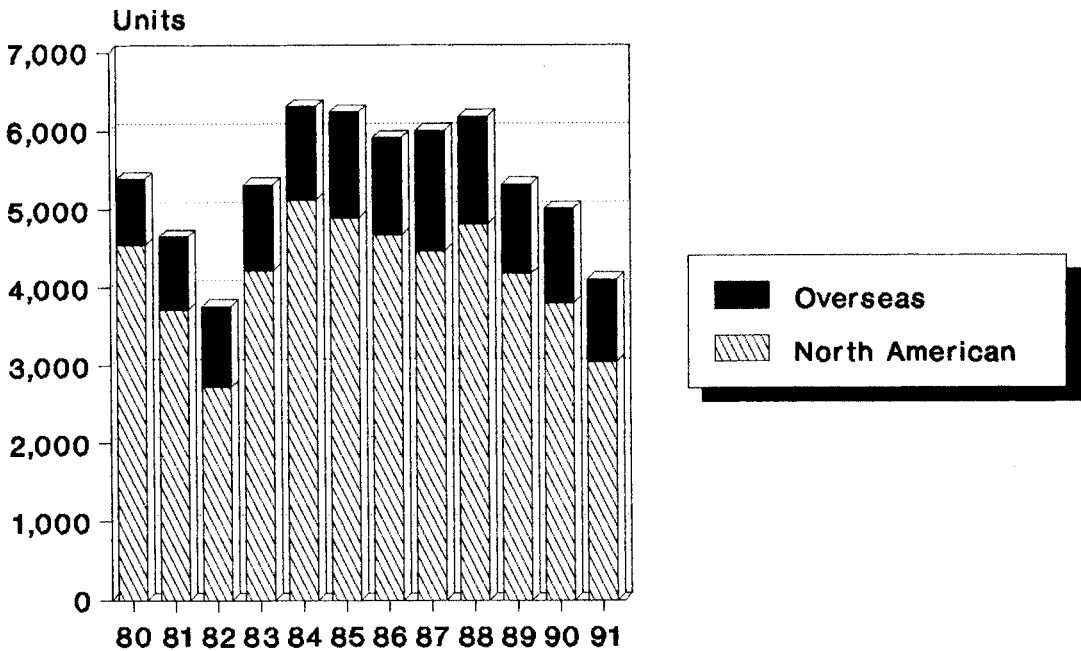


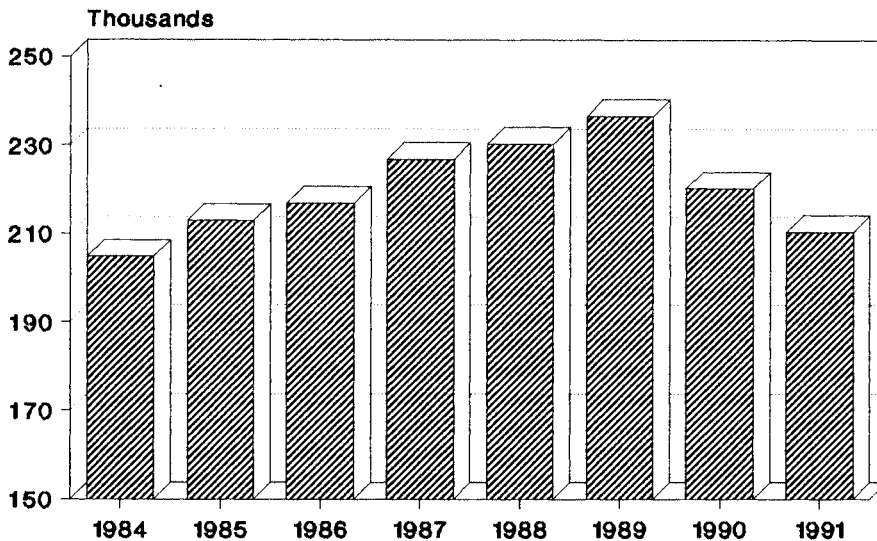
Diagram 12 shows the number of new motor vehicles sold on Prince Edward Island by both North American and overseas producers. New motor vehicle sales have declined substantially from 1986 through to 1991. The proportion of new motor vehicles purchased on Prince Edward Island that are produced overseas has varied between a low of 18.7 per cent in 1984 and a high of 27.5 per cent in 1982. In 1991, this proportion was 25.7 per cent.

**(h) Tourism**

The number of tourist parties visiting the Island in 1991 declined to 210,300 from 220,200 in 1990. The tourist season is considered to be from May 15th to October 31st. This is the second year of decline and the cumulative decline in tourism since 1989 totals 11.1 per cent. Diagram 13 shows the number of tourist auto parties visiting Prince Edward Island in the period 1980 to 1991. The value of tourist expenditures in 1991 is estimated to have been \$90.1 million compared to \$84.1 million in 1990. The 1991 tourist expenditure figures include the Goods and Services Tax.

**Diagram 13**

**TOURIST VISITATION  
Via Auto Vehicles, P.E.I., 1984-91**



**(i) Exports**

The total value of goods exported internationally from Prince Edward Island in 1991 was \$168.1 million. This compares to \$167.6 million in 1990. In 1991, the United States was the destination of 53.8 per cent of these exports, down from 60.8 per cent in 1990. Potato exports to the United States in 1991 were reduced sharply due to restrictions on the imports of Prince Edward Island potatoes by the U.S. Government. This was partially offset by the sale of potatoes to Algeria which valued \$10.8 million in 1991 as mentioned previously.

**(j) Government**

Federal government operations on Prince Edward Island were downsized considerably in 1991 with the progressive closure of the Summerside airbase. Military personnel on Prince Edward Island was over 950 persons prior to the announcement of the closure, and had declined to about 600 in early 1991. By year end the Base had effectively terminated operations. The conversion of the facility into a commercial aerospace centre took place in the second half of 1991.

The provincial government acted as a stabilizing influence on the Island's economy during the year, helping to counteract the recession. However major federal transfer payments to the provincial government were reduced during the year and in particular, equalization payments fell by \$36 million. Provincial own source revenues also suffered as a result of the recession. As a result the provincial deficit in 1991/92 rose to \$51.8 million, compared to \$18.6 million in 1990/91.

**TABLE 1**  
**POPULATION AND VITAL STATISTICS**  
**PRINCE EDWARD ISLAND**

Year	June 1st	January - December			
	Population ('000)	Births	Deaths	Net Migration	Marriages
1980	122.8	1,958	1,035	-730	939
1981	122.5	1,897	992	-235	849
1982	122.4	1,924	980	87	855
1983	123.7	1,907	1,050	818	938
1984	125.1	1,954	1,109	564	1,057
1985	126.0	2,008	1,110	38	956
1986	126.6	1,928	1,121	-389	970
1987	127.3	1,955	1,116	427	924
1988	128.5	1,977	1,112	521	965
1989r	129.9	1,937	1,089	0	1,019
1990p	130.7	2,014	1,110	-767	996
1991p	130.7	2,090	1,190	-1436	1,010

**Quarterly**

**1990**

1st Quarter	130.2	498	320	70	60
2nd Quarter	130.5	531	240	-70	229
3rd Quarter	130.7	458	260	-377	528
4th Quarter	130.5	527	290	-390	179

**1991**

1st Quarter	130.3	500	350	3	70
2nd Quarter	130.5	530	280	-231	210
3rd Quarter	130.5	550	290	-1284	570
4th Quarter	129.5	510	270	76	160

Note: Yearly population figures are as of June 1 of each year. Quarterly population figures are of the first of each quarter. Population figures for 1980 - 1986 are final intercensal estimates, quarterly data for 1990 and 1991 are preliminary postcensal estimates based on the 1986 Census.

Note: 1990 Birth and Death data may be subject to revisions which should be released at the end of April, 1992. All other data have been revised/updated by Statistics Canada.

Note: Shortly before publication Statistics Canada released the 1991 Census results which indicate that the population of Prince Edward Island as of June 4, 1991 was 129,765. Accordingly the above table and related tables are subject to revisions.

p: preliminary r: revised

Source: Statistics Canada catalogues: 84-001 Vital Statistics Quarterly; 84-204 Births & Deaths; 84-205 Marriages & Divorces; 91-001 Quarterly Demographic Statistics; and 91-210 Postcensal Annual Estimates of Population by Marital Status, Age, Sex and Components of Growth for Canada, Provinces and Territories.

**TABLE 2**  
**IN-MIGRATION TO PRINCE EDWARD ISLAND BY PROVINCE OF ORIGIN**  
**1985-86 TO 1990-91**

<b>Province of Origin</b>	<b>1985-86</b>	<b>1986-87</b>	<b>1987-88</b>	<b>1988-89</b>	<b>1989-90</b>	<b>1990-91</b>
Newfoundland . . . . .	133	113	159	162	156	221
Nova Scotia . . . . .	712	559	742	789	831	733
New Brunswick . . . . .	447	495	424	483	507	519
Quebec . . . . .	161	158	161	177	152	210
Ontario . . . . .	751	806	1,057	1,154	1,148	1,164
Manitoba . . . . .	77	54	83	57	79	68
Saskatchewan . . . . .	74	70	71	66	43	22
Alberta . . . . .	311	326	324	311	252	272
British Columbia . . . . .	111	109	107	166	130	94
Yukon . . . . .	10	2	4	7	7	10
Northwest Territories . .	43	26	31	18	17	14
<b>Total In-Migration . . . . .</b>	<b>2,830</b>	<b>2,718</b>	<b>3,163</b>	<b>3,390</b>	<b>3,322</b>	<b>3,327</b>

Note: All data for year June 1st to May 31st.

Source: Statistics Canada Catalogues: 91-208, International and Interprovincial Migration in Canada; and 91-210, Postcensal Annual Estimates of Population by Marital Status, Age, Sex and Components of Growth for Canada, Provinces and Territories.

**TABLE 3**  
**OUT-MIGRATION FROM PRINCE EDWARD ISLAND**  
**BY PROVINCE OF DESTINATION**  
**1985-86 TO 1990-91**

<b>Province of Destination</b>	<b>1985-86</b>	<b>1986-87</b>	<b>1987-88</b>	<b>1988-89</b>	<b>1989-90</b>	<b>1990-91</b>
Newfoundland.....	86	89	110	133	133	170
Nova Scotia .....	759	776	650	835	948	1,071
New Brunswick.....	485	472	531	502	545	630
Quebec .....	111	166	133	132	169	234
Ontario .....	843	962	997	927	1,123	1,338
Manitoba .....	67	61	33	74	58	80
Saskatchewan.....	51	26	42	29	58	66
Alberta.....	324	202	209	204	286	329
British Columbia.....	151	148	150	140	231	305
Yukon .....	4	13	5	4	2	4
Northwest Territories....	<u>25</u>	<u>23</u>	<u>8</u>	<u>29</u>	<u>22</u>	<u>14</u>
Total Out-Migration.....	2,906	2,938	2,868	3,009	3,575	4,241

Note: All data for year June 1st to May 31st.

Source: Statistics Canada Catalogues 91-208, International and Interprovincial Migration in Canada; and 91-210, Postcensal Annual Estimates of Population by Marital Status, Age, Sex and Components of Growth for Canada, Provinces and Territories.

**TABLE 4**  
**COMPONENTS OF INTERNATIONAL AND INTERPROVINCIAL MIGRATION**  
**PRINCE EDWARD ISLAND, 1967-68 TO 1990-91**

Year	INTERNATIONAL MIGRATION			INTERPROVINCIAL MIGRATION			Total Net Migration
	Immigration	Emigration	Net Migration	In Migration	Out Migration	Net Migration	
1967-68	152	565	-413	3,754	3,865	-111	-524
1968-69	187	491	-304	3,930	4,526	-596	-900
1969-70	167	459	-292	3,207	4,809	-1,602	-1,894
1970-71	176	350	-174	4,023	3,801	222	48
1971-72	181	73	108	4,299	4,009	290	398
1972-73	171	69	102	4,332	3,409	923	1,025
1973-74	354	92	262	4,756	4,254	502	764
1974-75	299	87	212	5,428	4,037	1,391	1,603
1975-76	204	72	132	4,392	3,742	650	782
1976-77	208	194	14	3,837	3,683	154	168
1977-78	174	221	-47	3,933	3,233	700	653
1978-79	172	210	-38	3,584	3,658	-74	-112
1979-80	301	148	153	3,185	3,543	-358	-205
1980-81	148	148	0	3,116	4,367	-1,251	-1,251
1981-82	145	48	97	3,375	4,231	-856	-759
1982-83	141	78	63	3,403	2,767	636	699
1983-84	112	87	25	3,219	2,422	797	822
1984-85	110	71	39	2,904	2,654	250	289
1985-86	130	66	64	2,830	2,906	-76	-12
1986-87	162	62	100	2,718	2,938	-220	-120
1987-88	159	44	115	3,163	2,868	295	410
1988-89	139	32	107	3,390	3,009	381	488
1989-90	195	57	138	3,322	3,575	-253	-115
1990-91 p	149	57	92	3,327	4,241	-914	-822

p: preliminary

Note: All data for year June 1st to May 31st.

Source: Statistics Canada Catalogues 91-208, International and Interprovincial Migration in Canada, and 91-210, Postcensal Annual Estimates of Population by Marital Status, Age, Sex and Components of Growth For Canada, Provinces and Territories.

**TABLE 5**  
**POPULATION BY SEX AND AGE GROUPS (AS OF JUNE 1ST)**  
**PRINCE EDWARD ISLAND ('000)**

Age Group	1989			1990			1991		
	Male	Female	Total	Male	Female	Total	Male	Female	Total
<b>Total</b>	64.3	65.6	129.9	64.4	65.9	130.3	64.2	66.1	130.3
0-4	5.0	4.8	9.8	5.0	4.9	9.9	4.9	4.9	9.8
5-9	5.0	4.8	9.8	5.0	4.8	9.8	5.1	4.9	10.0
10-14	5.2	4.8	10.0	5.2	4.9	10.0	5.2	4.9	10.0
15-19	5.4	4.9	10.3	5.3	4.8	10.0	5.1	4.7	9.7
20-24	5.4	5.3	10.7	5.1	5.0	10.1	4.9	4.8	9.7
25-29	5.5	5.5	11.0	5.6	5.5	11.2	5.4	5.3	10.7
30-34	5.3	5.3	10.6	5.3	5.4	10.7	5.3	5.5	10.8
35-39	4.8	4.9	9.7	4.8	4.9	9.7	5.0	5.0	10.0
40-44	4.4	4.4	8.8	4.6	4.7	9.3	4.7	4.8	9.5
45-49	3.3	3.3	6.6	3.4	3.3	6.7	3.5	3.4	7.0
50-54	2.9	2.8	5.7	3.0	2.9	5.9	3.0	2.9	5.9
55-59	2.7	2.6	5.3	2.7	2.6	5.3	2.7	2.7	5.4
60-64	2.5	2.6	5.1	2.5	2.6	5.1	2.5	2.6	5.0
65-69	2.3	2.7	5.0	2.3	2.6	4.9	2.3	2.6	4.9
70-74	1.9	2.3	4.2	1.9	2.4	4.3	1.9	2.4	4.3
75-79	1.4	2.0	3.4	1.4	2.1	3.5	1.3	2.1	3.4
80-84	0.8	1.3	2.1	0.9	1.3	2.2	0.9	1.4	2.3
85-89	0.3	0.7	1.0	0.3	0.7	1.0	0.4	0.7	1.1
90+	0.2	0.5	0.7	0.2	0.4	0.7	0.2	0.5	0.7
<b>Broad Age Grouping ('000's)</b>									
0-14	15.2	14.4	29.6	15.2	14.6	29.7	15.2	14.6	29.8
15-44	30.8	30.3	61.1	30.7	30.3	61.0	30.4	30.1	60.4
45-64	11.4	11.3	22.7	11.6	11.4	23.0	11.7	11.6	23.3
65+	6.9	9.5	16.4	7.0	9.5	16.6	7.0	9.7	16.7

Note: Each figure has been rounded independently to the nearest hundred. Numbers may not total due to rounding.

Note: The population figures shown here may not agree with figures given in Table 1. Total population figures in Table 1 have been subject to revision while Table 5 numbers have remained unchanged.

Source: Statistics Canada Catalogue 91-210, Postcensal Annual Estimates of Population by Marital Status, Age, Sex and Components of Growth for Canada, Provinces and Territories.

**TABLE 6**  
**POPULATION OF CITIES, TOWNS, VILLAGES AND**  
**INDIAN RESERVES IN PRINCE EDWARD ISLAND**

	1986 (1)	1991 (2)		1986 (1)	1991 (2)
Abram Village .....	334	311	Mount Stewart .....	340 A	315
Alberton .....	1,103	1,068	Murray Harbour .....	404	390
Bedeque .....	158	151	Murray River .....	476	485
Borden .....	514	436	North River .....	1,462 A	1,581
Brackley .....	306	327	North Rustico .....	651 A	614
Bunbury .....	1,054	1,251	O'Leary .....	823	856
Cardigan .....	346	359	Parkdale .....	2,065	2,198
Central Bedeque ....	188 A	181	Queen's Royalty .....	225	153
Charlottetown .....	15,776	15,396	Resort Mun. Stan.B- .		
Clyde River .....	523	554	Hope R.-Bayv.-.....		
Cornwall .....	1,894	2,038	Cavend.-N.Rust. (4) ..	261 A	256
Crapaud .....	332	323	Rocky Point (3) .....	26	32
Cross Roads .....	1,765	1,849	Scotchfort (3) .....	117	96
East Royalty .....	2,039	2,052	Sherbrooke .....	559 A	613
Elliot River .....	403 A	434	Sherwood .....	5,769	6,006
Georgetown .....	729	716	Souris .....	1,374 A	1,333
Hillsborough Park ...	996	1,489	Southport .....	1,329 A	1,665
Hunter River .....	317	356	St. Eleanors .....	3,757 A	3,514
Kensington .....	1,249 A	1,332	St. Louis .....	135	124
Keppoch-Kinlock ....	445 A	567	St. Peters Bay .....	265	284
Kings Royalty .....	195	224	Summerside .....	8,020	7,474
Kinkora .....	256	253	Tignish .....	957 A	893
Lennox Island (3) ...	212	210	Tyne Valley .....	192 A	215
Linkletter .....	305	289	Union Road .....	187	197
Meadowbank .....	258	306	Victoria .....	189	172
Miltonvale Park .....	1,080 A	1,106	Warren Grove (4) .....	289 A	296
Miminegash .....	288	249	Wellington .....	405	408
Miscouche .....	677	672	West Royalty .....	2,070	3,142
Montague .....	2,038 A	1,901	Wilmot .....	1,734 A	2,176
Morell .....	359	349	Winsloe .....	962 A	1,105
Morell (3) .....	12	18	Winsloe South (4) ...	161 A	197

(1): 1986 statistics are adjusted to conform to 1991 municipal boundaries.

(2): Comparison of the 1991 Census data with data from earlier censuses is affected by a change in the definition of the 1991 Census population.

(3): Indian Reserves.

(4): Census Subdivisions added since the 1986 Census.

A: Adjusted figures due to boundary changes.

Source: 1991 Census of Canada, Catalogue 93-304, Census Divisions and Census Subdivisions, Population and Dwelling Counts.

**TABLE 7**

**1986 CENSUS DATA ON POPULATION, DWELLINGS, HOUSEHOLDS AND FAMILIES**

	<b>KINGS</b>	<b>QUEENS</b>	<b>PRINCE</b>	<b>P.E.I.</b>
<b>POPULATION</b> .....	19,509	63,460	43,677	126,646
Male .....	10,085	30,915	21,895	62,895
Female .....	9,425	32,545	21,775	63,750
<b>DWELLINGS &amp; HOUSEHOLDS</b>				
Occupied Private Dwellings .....	6,050	20,985	13,665	40,690
Owned .....	5,135	14,460	10,530	30,120
Rented .....	910	6,485	3,075	10,470
On Reserve .....	5	35	60	100
Single Detached .....	5,345	14,085	10,675	30,105
Apartment, 5 or More Stories .....	-	35	-	40
Movable dwellings .....	220	715	635	1,575
All other types .....	480	6,145	2,355	8,980
Dwellings by main heating fuel				
Gas .....	60	105	105	270
Electricity .....	205	1,150	565	1,925
Oil (including Kerosene) .....	2,810	15,785	8,180	26,775
Other fuels (includes wood, coal, coke and other forms of energy) .....	2,970	3,940	4,815	11,730
<b>CENSUS FAMILIES</b>				
Families in Private Households .....	4,780	16,015	11,275	32,070
Husband-Wife Families .....	4,220	13,725	10,090	28,030
With no children at home .....	1,255	4,485	3,210	8,950
With children at home .....	2,965	9,235	6,875	19,080
Lone-Parent Families .....	565	2,290	1,185	4,040
Male parent .....	120	385	225	735
Female parent .....	435	1,905	965	3,305
Average No. of Persons per Family .....	3.5	3.3	3.4	3.4
Average No. of Children per Family (1) .....	1.6	1.5	1.5	1.5
<b>FAMILY INCOME</b>				
Under \$9,999 .....	405	1,030	845	2,285
\$ 10,000 - 29,999 .....	2,705	7,370	6,250	16,325
\$ 30,000 - 49,999 .....	1,295	5,090	3,050	9,435
\$ 50,000 + .....	385	2,520	1,125	4,030
Average Family Income (\$) .....	27,080	32,741	28,628	30,451

1: The average number of children per family is calculated using the total number of children at home and the total number of census families.

Note: Totals may not equal the sum of the components due to rounding.

Source: 1986 Census of Canada, Catalogues 94-103, Prince Edward Island Part 1, Profiles; 94-104, Prince Edward Island Part 2, Profiles.

**TABLE 8**  
**PRINCE EDWARD ISLAND WORKING AGE POPULATION,**  
**LABOUR FORCE, EMPLOYMENT AND UNEMPLOYMENT**  
**ANNUAL AVERAGES 1981-1991**

Year	Population ( <sup>'000</sup> )	Population 15+ ( <sup>'000</sup> )	Labour Force ( <sup>'000</sup> )	Participation Rate (%)	Employed ( <sup>'000</sup> )	Unemployed ( <sup>'000</sup> )	Unemployment Rate (%)
1981	122.5	90	53	58.7	47	6	11.2
1982	122.4	90	52	57.8	45	7	12.9
1983	123.7	91	55	60.3	48	7	12.2
1984	125.1	93	56	60.5	49	7	12.8
1985	126.0	94	58	61.5	50	8	13.3
1986	126.6	94	59	62.1	51	8	13.4
1987	127.3	95	60	62.9	52	8	13.2
1988	128.5	96	62	64.0	54	8	13.0
1989	129.9	97	63	65.0	54	9	14.1
1990	130.7	98	65	66.0	55	10	14.9
1991	130.7	98	64	65.1	53	11	16.8

**PRINCE EDWARD ISLAND LABOUR FORCE,**  
**EMPLOYMENT AND UNEMPLOYMENT, BY SEX**  
**ANNUAL AVERAGES 1987 - 1991**

		Population 15+ ( <sup>'000</sup> )	Labour Force ( <sup>'000</sup> )	Participation Rate (%)	Employed ( <sup>'000</sup> )	Unemployed ( <sup>'000</sup> )	Unemployment Rate (%)
1987	MALE . . . . .	46	34	72.3	29	4	12.7
	FEMALE . . . . .	49	26	53.9	23	4	13.8
1988	MALE . . . . .	47	34	73.0	30	4	11.5
	FEMALE . . . . .	49	27	55.5	23	4	14.9
1989	MALE . . . . .	47	35	73.1	30	5	13.7
	FEMALE . . . . .	50	29	57.3	24	4	14.6
1990	MALE . . . . .	48	35	73.4	30	5	14.6
	FEMALE . . . . .	50	30	59.0	25	4	15.2
1991	MALE . . . . .	48	34	72.1	28	6	17.4
	FEMALE . . . . .	50	29	58.4	25	5	16.2

Source: Statistics Canada Catalogue 91-210, Postcensal Annual Estimates of Population by Marital Status, Age, Sex and Components of Growth for Canada, Provinces and Territories; 71-001, The Labour Force; and 71-201, Historical Labour Force Statistics.

**TABLE 9**  
**ESTIMATES OF EMPLOYEES BY INDUSTRY**  
**PRINCE EDWARD ISLAND 1985-1991**  
('000)

	1985	1986	1987	1988	1989	1990	1991 p
<b>Industry</b>							
Manufacturing . . . . .	3.0	3.1	3.5	3.6	3.8	3.6	3.7
Construction . . . . .	1.3	1.6	1.8	2.2	2.1	2.1	1.8
Transportation, Communication and Other Utilities. . . . .	3.0	3.0	3.1	3.2	3.1	3.1	3.4
Trade . . . . .	5.4	5.7	6.3	6.7	6.7	6.8	6.7
Finance, Insurance and Real Estate .	1.3	1.4	1.4	1.5	1.5	1.5	1.4
Community, Business and Personal Services. . . . .	10.5	11.4	13.2	13.8	14.3	14.7	15.0
Public Administration . . . . .	4.9	4.7	4.8	5.0	5.2	5.5	5.6
Total Non-Agricultural Industries . . . .	29.7	31.0	34.1	36.2	36.6	37.3	37.7

p: preliminary

- 1: Adjustments to SEPH data for the period 1983-1986 are required when making comparisons with the 1987 estimates and later estimates. Information on these adjustment factors were published in the May 1987 issue of Employment, Earnings and Hours.
- 2: Does not include estimates on the following categories: Agriculture, Fishing and trapping, private households, religious organizations and the military.

Source: Statistics Canada, Catalogue 72-002, Employment, Earnings and Hours.

**TABLE 10**  
**AVERAGE WEEKLY WAGES AND SALARIES,**  
**TOTAL WAGES AND SALARIES FOR PRINCE EDWARD ISLAND**

Year	Average Weekly Wages and Salaries Industrial Composite (\$1)	Average Weekly Wages and Salaries Industrial Aggregate (\$1)	Total Wages and Salaries (\$ Millions)
1980	230.03	-	434.7
1981	250.13	-	482.1
1982	278.53	-	536.1
1983	295.20	-	567.7
1984	299.79	324.55	620.8
1985 r	306.74	339.30	689.5
1986 r	(a)	348.50	739.0
1987 r	(a)	362.39	803.5
1988 r	(a)	379.26	887.0
1989 r	(a)	400.68	963.4
1990 r	(a)	419.67	1,022.0
1991 p		431.94	1,041.3
<b>1991 Monthly:</b>			
January . . . . .		437.19	79.6
February . . . . .		435.58	78.6
March . . . . .		437.31	80.2
April . . . . .		435.70	81.4
May . . . . .		429.42	89.6
June . . . . .		418.99	93.3
July . . . . .		426.61	94.8
August . . . . .		433.55	94.4
September . . . . .		434.12	91.7
October . . . . .		436.80	88.6
November . . . . .		428.40	86.0
December p . . . . .		429.58	83.0

p: preliminary

r: revised

1: In March 1983 Statistics Canada implemented a new survey of Employment Payroll and Hours. For more information on this new survey see the March 1983 Supplement to Employment Earnings and Hours, catalogue number 72-002. Statistics on the Industrial Composite are being updated by the more comprehensive Industrial Aggregate.

2: Adjustments to SEPH data for the period 1983-1986 are required when making comparisons with the 1987 estimates and later estimates. Information on these adjustment factors were published in the May 1987 issue of Employment, Earnings and Hours.

(a): The Industrial Composite was terminated in December of 1985.

Source: Statistics Canada Catalogues 72-002, Employment, Earnings and Hours; 72-005, Estimates of Labour Income.

**TABLE 11**  
**UNEMPLOYMENT INSURANCE STATISTICS**  
**PRINCE EDWARD ISLAND, 1977 - 1991**

Year	Employee Contributions To Unemployment Insurance (\$000's)	Total U.I. Benefits Paid In P.E.I.	Total Number Of Weeks Paid To Beneficiaries	Average Weekly Payment (\$ To Beneficiaries	Average Monthly Number Of Beneficiaries
1977	3,899	38,308,000	423,078	90.69	8,027
1978	4,347	45,500,236	453,620	100.30	8,664
1979	4,394	43,320,430	432,044	100.27	8,297
1980	4,702	46,481,771	416,422	111.62	7,950
1981	6,750	52,943,512	446,805	118.49	8,604
1982	6,784	69,025,442	527,830	130.77	9,906
1983	10,297	81,727,181	573,637	142.47	10,719
1984	11,751	98,225,366	645,995	152.05	12,390
1985	12,990	106,916,220	670,900	159.37	12,920
1986	14,015	120,047,150	696,670	172.32	12,930
1987	15,329	123,179,340	665,040	185.22	12,610
1988	17,058	138,544,830	694,800	199.41	12,700
1989	15,376	151,154,210	700,860	215.67	13,560
1990	na	153,846,500	676,970	227.26	13,310
1991 p	na	189,023,330	785,260	240.71	15,050

p: Preliminary

na: not available

Note: 1990 and 1991 data on Employee Contributions were not available at time of publication.

Source: Statistics Canada, Catalogues 73-001, Unemployment Insurance Statistics; 73-201, Annual Report, Benefit Periods Established and Terminated Under The Unemployment Insurance Act; 73-202S, Unemployment Insurance Statistics, Annual Supplement.

**TABLE 12**  
**PERSONAL INCOME, PRINCE EDWARD ISLAND**  
**1986-1990, (\$ MILLIONS)**

	1986	1987	1988	1989	1990
Wages, Salaries & Supplementary Labour Income . . . . .	808	877	969	1,050	1,116
Military Pay and Allowances . . . . .	32	33	34	34	29
Net Income received by Farm Operators from Farm Production . . . . .	61	11	58	35	31
Net Income of Non-Farm Unincorporated Business Including Rent . . . . .	142	162	167	168	168
Interest, Dividends and Miscellaneous Investment Income . . . . .	164	175	196	234	265
Total Earned Income . . . . .	1,207	1,258	1,424	1,521	1,609
Government Transfers . . . . .	378	402	442	470	501
Other Transfers . . . . .	7	7	7	8	8
Total Personal Income . . . . .	1,592	1,667	1,873	1,999	2,118
Personal Disposable Income . . . . .	1,336	1,375	1,544	1,650	1,717
Per Capita Personal Income \$ . . . . .	12,575	13,126	14,519	15,389	16,292
Per Capita Personal Income Canada \$ . . . . .	16,852	18,003	19,553	20,922	22,184
P.E.I. as a % of Canada . . . . .	74.6	72.9	74.3	73.6	73.4
Earned Income as % of Total Personal Income . . . . .	75.8	75.5	76.0	76.1	76.0

Source: Statistics Canada Catalogue 13-201, National Income and Expenditure Accounts; and 13-213, Provincial Economic Accounts.

**TABLE 13**  
**GOVERNMENT TRANSFER PAYMENTS TO PERSONS**  
**PRINCE EDWARD ISLAND 1986 - 1990**  
**(\$ MILLIONS)**

	1986	1987	1988	1989	1990
<b>FEDERAL:</b>					
Family and Youth Allowance .....	14	14	14	14	14
Pensions - World Wars I & II .....	10	10	10	11	13
War Veterans' Allowance .....	9	8	7	6	6
Unemployment Insurance Benefits .....	119	122	138	150	153
Pensions to Government Employees.....	16	17	18	19	20
Old Age Security Payments.....	91	94	98	102	106
Adult Occupational Training Payments .....	-	-	-	-	-
Miscellaneous and all Other (1).....	18	16	20	19	26
<b>TOTAL FEDERAL</b> .....	<u>277</u>	<u>281</u>	<u>305</u>	<u>321</u>	<u>338</u>
<b>PROVINCIAL:</b>					
Direct Relief .....	22	24	26	27	29
Old Age and Blind Pensions, Mothers' and Disabled Persons' Allowance (2) .....	-	-	-	-	-
Workmens' Compensation Benefits.....	4	7	8	9	10
Pensions to Government Employees.....	4	4	5	6	6
Grants to Post-Secondary Educational Institutions .....	23	27	29	32	35
Grants to Benevolent Associations .....	11	15	19	20	22
Miscellaneous.....	5	6	6	5	5
<b>TOTAL PROVINCIAL</b> .....	<u>69</u>	<u>83</u>	<u>93</u>	<u>99</u>	<u>107</u>
<b>LOCAL:</b>					
<b>TOTAL LOCAL</b> .....	-	-	-	-	-
<b>CANADA PENSION PLAN</b> .....	<u>32</u>	<u>38</u>	<u>44</u>	<u>50</u>	<u>56</u>
<b>TOTAL</b> .....	<u>378</u>	<u>402</u>	<u>442</u>	<u>470</u>	<u>501</u>

Note - : nil or zero

Note 1: Includes re-established credits, grants to universities, assistance to immigrants, and grants from Canada Council.

Note 2: Old Age and Blind Pensions, and Mothers' and Disabled Persons' Allowance are included in Direct Relief.

Source: Statistics Canada Catalogue 13-213, Provincial Economic Accounts.

**TABLE 14**  
**GROSS PROVINCIAL EXPENDITURES**  
**PRINCE EDWARD ISLAND, 1986-1990**  
**(\$ MILLIONS)**

	1986	1987	1988	1989	1990
Personal Expenditures on Consumer Goods & Services (1) . . . . .	1,193	1,279	1,383	1,467	<u>1,553</u>
Personal Expenditures on Consumer Goods . . . . .	683	719	774	799	845
Personal Expenditures on Consumer Services . . . . .	510	560	609	668	708
Government Current Expenditures on <del>Consumer</del> Goods & Services (2) . . . . .	549	579	646	660	<u>676</u>
Gross Fixed Capital Formation (3) . . . . .	318	339	404	432	<u>458</u>
Government . . . . .	73	70	90	94	96
Residential Construction . . . . .	0	0	0	0	0
Non-Residential Construction . . . . .	63	57	79	74	86
Machinery and Equipment . . . . .	10	13	11	20	10
Business . . . . .	245	269	314	338	362
Residential Construction . . . . .	122	123	144	142	137
Non-Residential Construction . . . . .	47	57	73	99	96
Machinery and Equipment . . . . .	76	89	97	97	129
Final Domestic Demand = (1) + (2) + (3) . . . . .	2,060	2,197	2,433	2,559	2,687
Value of Physical Change in Inventories . . . . .	60	-40	47	-30	<u>-26</u>
Government . . . . .	0	0	0	0	1
Business . . . . .	60	-40	47	-30	-27
Non-Farm . . . . .	23	-5	18	1	4
Farm and Grain in Commercial Channels . . . . .	37	-35	29	-31	-31
Net Exports Plus Residual Error of Estimate . . . . .	-622	-568	-699	-632	<u>-670</u>
Gross Provincial Expenditure at Market Price . . . . .	1,498	1,589	1,781	1,897	1,991

Source: Statistics Canada Catalogue 13-213, Provincial Economic Accounts.

**TABLE 15**  
**PROVINCIAL GROSS DOMESTIC PRODUCT**  
**BY COMPONENT, PRINCE EDWARD ISLAND, 1986 - 1990**  
**(\$ MILLIONS)**

	1986	1987	1988	1989	1990
Wages, Salaries & Supplementary Labour Income . . . . .	808	877	969	1,050	1,116
Military Pay and Allowances . . . . .	32	33	34	34	29
Corporation Profits before Taxes . . . . .	98	111	116	117	95
Interest and Miscellaneous Investment Income . . . . .	106	110	129	156	193
Accrued Net Income of Farm Operators from Farm Production . . . . .	61	11	51	35	30
Net Income of Non-Farm Unincor- porated Business including Rent . . . . .	142	162	167	168	168
Inventory Valuation Adjustment . . . . .	<u>-7</u>	<u>-5</u>	<u>-8</u>	<u>-5</u>	<u>-</u>
Net Provincial Income at Factor Cost . . . . .	1,240	1,299	1,458	1,555	1,631
Capital Consumption Allowances . . . . .	<u>174</u>	<u>185</u>	<u>200</u>	<u>216</u>	<u>229</u>
Provincial Gross Domestic Product at Factor Cost . . . . .	<u>1,414</u>	<u>1,484</u>	<u>1,658</u>	<u>1,771</u>	<u>1,860</u>
Indirect Taxes . . . . .	154	172	191	204	219
Subsidies . . . . .	-70	-67	-68	-78	-88
Provincial Gross Domestic Product at Market Price . . . . .	<u>1,498</u>	<u>1,589</u>	<u>1,781</u>	<u>1,897</u>	<u>1,991</u>

∴ nil

Source: Statistics Canada Catalogue 13-213, Provincial Economic Accounts.

**TABLE 16**  
**PERFORMANCE OF GROSS DOMESTIC PRODUCT**  
**PRINCE EDWARD ISLAND RELATIVE TO CANADA**

Year	P.E.I. GDP at Market Prices		P.E.I. GDP at Market Prices		Canadian GDP		Canadian GDP at Market Prices		Canadian GDP in Constant \$		P.E.I. GDP in Constant \$	
	\$ Millions	% Change	per capita	% Change	per capita	% Change	% Change*					
1977	602	5.4	5,058.8	10.1	9,307.5	3.6	1.6					
1978	682	13.3	5,636.4	10.9	10,269.1	4.6	8.1					
1979	786	15.2	6,442.6	14.3	11,628.1	3.9	3.6					
1980	846	7.6	6,878.0	12.2	12,880.3	1.5	-3.2					
1981	1,009	19.3	8,203.3	14.8	14,610.4	3.7	-2.9					
1982	1,051	4.2	8,614.8	5.1	15,209.6	-3.2	-0.4					
1983	1,165	10.8	9,395.2	7.9	16,269.1	3.2	4.1					
1984	1,297	11.3	10,376.0	10.0	17,761.8	6.3	4.4					
1985	1,320	1.8	10,476.2	7.6	18,967.1	4.8	5.4					
1986	1,498	13.5	11,795.3	5.6	19,884.2	3.3	3.8					
1987	1,589	6.1	12,511.8	8.9	21,429.1	4.2	2.7					
1988	1,781	12.1	13,806.2	10.0	23,295.8	4.7	6.3					
1989	1,897	6.5	14,592.3	8.2	24,879.4	2.5	2.8					
1990	1,991	5.0	15,315.4	4.0	25,475.0	0.5	3.6					
1991	na	na	na	1.1	25,155.3	-1.5	-1.1					

na: not available

\*: Conference Board of Canada

Source: Statistics Canada 13-001, National Income & Expenditure Accounts; 13-201, National Income & Expenditure Accounts, The Annual Estimates; 13-213, Provincial Economic Accounts.

**TABLE 17**  
**PROVINCIAL GROSS DOMESTIC PRODUCT AT FACTOR COST**  
**FOR SELECTED INDUSTRIES (\$ MILLIONS)**  
**PRINCE EDWARD ISLAND, 1984-1987**

	1984	1985	1986	1987
<b>BUSINESS SECTOR</b>				
Agriculture and Related Services .....	110.8	69.3	125.1	68.3
Fishing and Trapping .....	26.9	29.6	42.9	51.6
Logging & Forestry Industries .....	1.7	3.1	2.2	4.3
Mining, Quarrying & Oil Well .....	0.1	0.0	0.1	0.0
Manufacturing Industries .....	83.6	85.4	93.6	109.6
Food Industries .....	43.6	42.4	50.6	64.0
Wood Industries .....	6.7	6.2	6.5	7.0
Fabricated Metal Products .....	4.1	4.0	3.7	5.2
Transportation Equipment .....	x	3.5	x	3.5
Other Manufacturing Industries .....	2.7	3.5	3.4	3.5
Construction .....	83.4	116.2	111.1	114.1
Other Utility Industries .....	31.6	37.4	44.8	37.9
Electrical Power Systems .....	30.8	36.7	43.8	36.6
Other Utility Industries .....	0.8	0.7	1.0	1.2
Educational Service Industries .....	0.3	0.2	0.4	0.4
Health Services Industry .....	25.0	25.7	27.8	30.5
Accommodation & Food Service .....	36.8	41.8	45.7	53.0
<b>NON-BUSINESS SECTOR</b>				
Forestry Services Industry .....	0.8	1.5	1.6	1.7
Water Systems Industry .....	1.1	1.1	1.1	1.1
Provincial Government Service .....	51.6	77.5	72.3	73.6
Local Government Services .....	7.8	8.6	9.9	10.8
Educational Service Industries .....	86.6	95.3	104.6	111.4
Health & Social Services Industries .....	68.3	93.4	104.1	112.8
<b>SPECIAL AGGREGATION</b>				
Business Sector-Goods .....	338.2	341.1	419.9	385.7
Non-Business Sector-Goods .....	1.1	1.1	1.1	1.1
Goods-Producing Industries .....	339.3	342.2	420.9	386.8
Total Selected Industries .....	616.4	606.6	787.3	781.1
Other Industries (1) .....	582.6	630.4	626.7	702.9
Total Gross Domestic Product at Factor Cost .....	1,199.0	1,237.0	1,414.0	1,484.0

1. Other industries were calculated by taking the difference between Total Gross Domestic Product at Factor Cost and Total Selected Industries.

x: confidential

Source: Table 15 in this Publication for Total Gross Domestic Product at Factor Cost, and Statistics Canada Catalogue 15-203, Provincial Gross Domestic Product at Factor Cost for Selected Industries.

**TABLE 18**  
**GROSS DOMESTIC PRODUCT BY INDUSTRY**  
**PRINCE EDWARD ISLAND**  
**(CONSTANT \$1986)**

	1986	1987	1988	1989	1990	1991
Agriculture .....	107.1	88.5	90.1	90.4	91.7	87.3
%	38.5	-17.4	1.8	0.4	1.3	-4.8
Fishing .....	42.9	41.8	46.6	45.9	45.4	44.7
%	22.0	-2.4	11.4	-1.4	-1.2	-1.6
Construction .....	110.0	99.4	120.3	117.7	115.1	121.6
%	-6.2	-9.7	21.0	-2.2	-2.2	5.7
Manufacturing .....	98.7	106.3	111.4	112.4	124.5	125.1
%	-4.0	7.7	4.8	0.9	10.8	0.5
Utilities .....	45.3	46.8	50.2	51.6	53.6	52.9
%	13.5	3.5	7.2	2.6	3.9	-1.2
Transportation & Communications .....	111.1	117.4	123.4	129.1	149.5	144.1
%	1.4	5.6	5.2	4.6	15.8	-3.6
Trade .....	148.2	162.3	169.7	179.2	171.9	153.7
%	-2.8	9.5	4.6	5.6	-4.0	-10.6
Finance, Insurance & Real Estate .....	203.3	211.2	220.0	228.0	230.3	236.2
%	4.9	3.9	4.1	3.7	1.0	2.6
Community Business & Personal Service .....	365.8	392.0	425.9	443.1	470.0	466.6
%	6.4	7.1	8.7	4.0	6.1	-0.7
Public Administration .....	216.7	222.0	222.7	226.6	230.4	231.6
%	-2.5	2.4	0.3	1.8	1.7	0.5
ALL INDUSTRIES .....	1,449.7	1,488.6	1,581.7	1,625.3	1,684.4	1,665.8
%	3.8	2.7	6.3	2.8	3.6	-1.1

Note: % = percentage change from previous year as calculated by the Conference Board.

Note: The sum of the industries listed above may not equal All Industries as not all industries are represented.

Source: Conference Board of Canada.

**TABLE 19**  
**PUBLIC AND PRIVATE INVESTMENT BY TYPE AND BY INDUSTRY**  
**PRINCE EDWARD ISLAND (\$ MILLIONS)**

<b>Capital Expenditures by Industry</b>	<b>1986</b>	<b>1987</b>	<b>1988</b>	<b>1989</b>	<b>1990</b>	<b>1991</b>
Primary Industries and Construction . . .	28.6	40.8	45.4	44.7	37.6	32.2
New Construction . . . . .	8.8	12.8	16.1	13.3	12.7	11.1
New Machinery & Equipment . . . . .	19.8	28.0	29.3	31.4	24.9	21.1
Manufacturing . . . . .	16.2	10.8	17.8	12.0	33.0	82.8
New Construction . . . . .	4.8	1.6	2.9	0.9	5.9	19.6
New Machinery & Equipment . . . . .	11.4	9.2	14.9	11.1	27.1	63.2
Transportation . . . . .	1.7	1.4	2.5	1.6	3.3	5.0
New Construction . . . . .	0.6	0.3	0.5	0.2	0.4	0.5
New Machinery & Equipment . . . . .	1.1	1.1	2.0	1.4	2.9	4.5
Communication . . . . .	15.9	16.7	18.8	20.2	23.2	18.1
New Construction . . . . .	3.0	4.4	5.5	5.6	6.0	7.8
New Machinery & Equipment . . . . .	12.9	12.3	13.3	14.6	17.2	10.3
Miscellaneous Utilities . . . . .	6.2	14.9	9.5	15.6	8.9	25.2
New Construction . . . . .	5.8	11.2	7.8	12.7	6.4	6.1
New Machinery & Equipment . . . . .	0.4	3.7	1.7	2.9	2.5	19.1
Trade . . . . .	11.7	12.5	12.7	13.5	17.8	18.7
New Construction . . . . .	3.4	2.6	3.8	3.8	7.2	6.9
New Machinery & Equipment . . . . .	8.3	9.9	8.9	9.7	10.6	11.8
Finance . . . . .	13.9	13.5	27.4	34.0	27.0	24.9
New Construction . . . . .	10.5	9.6	22.1	27.9	21.1	19.7
New Machinery & Equipment . . . . .	3.4	3.9	5.3	6.1	5.9	5.2
Commercial Service . . . . .	23.8	22.7	23.5	41.4	29.7	9.8
New Construction . . . . .	7.9	4.5	4.6	27.0	16.4	2.5
New Machinery & Equipment . . . . .	15.9	18.2	18.9	14.4	13.3	7.3
Institutions . . . . .	30.8	26.1	20.5	22.1	25.3	24.9
New Construction . . . . .	28.5	22.9	17.7	16.1	20.1	21.2
New Machinery & Equipment . . . . .	2.3	3.2	2.8	6.0	5.2	3.7
Government Departments . . . . .	52.3	58.9	84.2	79.2	66.2	91.8
New Construction . . . . .	40.8	49.6	75.8	64.1	59.1	80.9
New Machinery & Equipment . . . . .	11.5	9.3	8.4	15.1	7.1	10.9
Housing . . . . .	122.8	115.7	131.0	123.0	113.5	111.4
New Construction . . . . .	122.8	115.7	131.0	123.0	113.5	111.4
New Machinery & Equipment . . . . .	0.0	0.0	0.0	0.0	0.0	0.0
<b>Total Capital Expenditures . . . . .</b>	<b>323.9</b>	<b>334.0</b>	<b>393.3</b>	<b>407.3</b>	<b>385.5</b>	<b>444.8</b>
New Construction . . . . .	236.9	235.2	287.8	294.6	268.8	287.7
New Machinery & Equipment . . . . .	87.0	98.8	105.5	112.7	116.7	157.1
<b>Total Repair Expenditure . . . . .</b>	<b>105.7</b>	<b>100.6</b>	<b>119.3</b>	<b>124.7</b>	<b>118.8</b>	<b>118.5</b>
New Construction . . . . .	56.8	47.1	64.6	66.8	62.8	61.9
New Machinery & Equipment . . . . .	48.9	53.5	54.7	57.9	56.0	56.6
<b>Total Capital and Repair . . . . .</b>	<b>429.6</b>	<b>434.6</b>	<b>512.6</b>	<b>532.0</b>	<b>504.3</b>	<b>563.3</b>
New Construction . . . . .	293.7	282.3	352.4	361.4	331.6	349.6
New Machinery & Equipment . . . . .	135.9	152.3	160.2	170.6	172.7	213.7

Note: 1986-1990 data are actual, 1991 data are preliminary actual.

Source: Statistics Canada, Catalogues 61-205, Private & Public Investment In Canada; 61-206, Private & Public Investment In Canada, Revised Intentions.

**TABLE 20**  
**ALL ITEMS CONSUMER PRICE INDEX**  
**CHARLOTTETOWN - SUMMERSIDE**  
**1986 = 100**

	<b>1986</b>	<b>1987</b>	<b>1988</b>	<b>1989</b>	<b>1990</b>	<b>1991</b>
January .....	99.2	101.6	105.2	108.6	114.1	124.7
February .....	99.8	102.0	106.0	109.0	114.9	125.5
March .....	99.7	102.4	106.4	109.7	115.4	126.0
April .....	99.4	102.9	106.7	110.0	116.4	125.9
May .....	99.4	102.8	106.9	111.0	116.4	125.5
June .....	99.1	103.4	107.2	111.6	116.9	125.9
July .....	100.0	104.2	107.8	112.4	117.2	126.1
August .....	100.5	104.2	108.5	112.1	117.7	126.2
September .....	100.4	104.3	108.3	113.0	118.2	126.2
October .....	100.7	104.8	108.8	113.1	118.6	126.6
November .....	101.0	105.1	108.7	113.8	119.2	126.8
December .....	101.3	105.0	108.5	113.5	120.1	125.8
Annual Averages .....	100.0	103.6	107.4	111.5	117.1	125.9
% Change .....	2.1	3.5	3.7	3.8	5.0	7.5

Note: The base year for the Consumer Price Index was updated from 1981 = 100 to 1986 = 100 in June 1990.

Note: The Consumer Price Index for each city measures price change from one time period to another within that specific city. Thus, while city C.P.I.'s show the movement of prices over time in each city, they do not indicate price level differences between cities or between cities and Canada.

Note: The Consumer Price Index for Prince Edward Island is equal to the Charlottetown - Summerside Consumer Price Index.

Source: Statistics Canada, Catalogue 62-001, The Consumer Price Index.

**TABLE 21**  
**ALL ITEMS CONSUMER PRICE INDEX**  
**CANADA, 1986 = 100**

	1986	1987	1988	1989	1990	1991
January .....	98.3	102.1	106.3	110.9	117.0	125.0
February .....	98.6	102.6	106.7	111.6	117.7	125.0
March .....	98.9	103.0	107.3	112.2	118.1	125.5
April .....	99.0	103.5	107.6	112.5	118.1	125.5
May .....	99.5	104.1	108.3	113.7	118.7	126.1
June .....	99.6	104.4	108.5	114.3	119.2	126.7
July .....	100.4	105.1	109.1	115.0	119.8	126.8
August .....	100.7	105.2	109.4	115.1	119.9	126.9
September .....	100.7	105.2	109.5	115.3	120.2	126.7
October .....	101.2	105.6	110.0	115.7	121.2	126.5
November .....	101.7	106.0	110.3	116.1	121.9	127.0
December .....	101.9	106.1	110.3	116.0	121.8	126.4
Annual Averages .....	100.0	104.4	108.6	114.0	119.5	126.2
% Change .....	4.2	4.4	4.0	5.0	4.8	5.6

Note: See notes in Table 20.

Source: Statistics Canada, Catalogue 62-001, The Consumer Price Index.

**TABLE 22**  
**CONSUMER PRICE INDEX CHARLOTTETOWN - SUMMERSIDE**  
**ANNUAL AVERAGES OF MAJOR COMPONENTS, 1986 = 100**

Year	Food	Housing	Clothing	Transportation	Health & Personal Care	Recreation Reading & Education	Tobacco & Alcohol	Energy(1)
1982	88.9	88.6	91.2	87.0	82.1	82.1	66.6	99.2
1983	90.2	93.2	94.8	91.8	87.0	87.8	75.5	105.1
1984	94.5	97.5	95.7	95.0	91.4	91.3	81.9	112.0
1985	96.6	101.3	96.9	98.9	96.0	94.9	88.9	116.4
1986	100.0	100.0	100.0	100.0	100.0	100.0	100.0	100.0
1987	105.0	101.9	102.6	102.3	104.9	105.7	108.2	98.5
1988	108.0	105.5	106.5	103.4	110.3	111.6	117.4	99.0
1989	112.1	108.1	110.1	106.6	115.0	116.6	130.7	96.5
1990	118.1	112.8	112.2	111.4	123.1	121.2	146.6	105.4
1991	125.6	119.7	122.7	116.8	132.5	129.0	179.0	120.7

**CONSUMER PRICE INDEX, CHARLOTTETOWN - SUMMERSIDE**  
**YEAR OVER YEAR PERCENTAGE CHANGES OF MAJOR COMPONENTS**

Year	Food	Housing	Clothing	Transportation	Health & Personal Care	Recreation Reading & Education	Tobacco & Alcohol	Energy(1)
1982	4.8	11.6	6.2	12.0	10.9	10.1	12.9	20.1
1983	1.5	5.2	3.9	5.5	6.0	6.9	13.4	5.9
1984	4.8	4.6	0.9	3.5	5.1	4.0	8.5	6.6
1985	2.2	3.9	1.3	4.1	5.0	3.9	8.5	3.9
1986	3.5	-1.3	3.2	1.1	4.2	5.4	12.5	-14.1
1987	5.0	1.9	2.6	2.3	4.9	5.7	8.2	-1.5
1988	2.9	3.5	3.8	1.1	5.1	5.6	8.5	0.5
1989	3.8	2.5	3.4	3.1	4.3	4.5	11.3	-2.5
1990	5.4	4.3	1.9	4.5	7.0	3.9	12.2	9.2
1991	6.4	6.1	9.4	4.8	7.6	6.4	22.1	14.5

Note: See notes in Table 20.

Note (1): Energy is not a component of the Consumer Price Index, it is a special aggregate.

Source: Statistics Canada, Catalogue 62-001, The Consumer Price Index.

**TABLE 23**  
**CONSUMER PRICE INDEX, CANADA**  
**ANNUAL AVERAGES OF MAJOR COMPONENTS, 1986 = 100**

Year	Food	Housing	Clothing	Transportation	Health & Personal Care	Recreation Reading & Education	Tobacco & Alcohol	Energy(1)
1982	84.6	84.7	88.9	84.5	83.4	83.4	67.0	89.7
1983	87.7	90.4	92.5	88.7	89.2	88.8	75.5	96.7
1984	92.5	93.8	94.7	92.5	92.7	91.8	81.6	102.0
1985	95.2	97.1	97.3	96.9	95.9	95.6	89.4	107.7
1986	100.0	100.0	100.0	100.0	100.0	100.0	100.0	100.0
1987	104.4	104.0	104.2	103.6	105.0	105.4	106.7	102.6
1988	107.2	108.6	109.6	105.6	109.6	111.3	114.6	103.2
1989	111.1	114.3	114.1	111.1	114.4	116.2	125.2	106.8
1990	115.7	119.5	117.3	117.3	120.0	121.3	136.1	117.4
1991	121.2	124.7	128.4	119.4	128.4	130.2	159.5	123.2

**CONSUMER PRICE INDEX CANADA**  
**YEAR OVER YEAR PERCENTAGE CHANGES OF MAJOR COMPONENTS**

Year	Food	Housing	Clothing	Transportation	Health & Personal Care	Recreation Reading & Education	Tobacco & Alcohol	Energy(1)
1982	7.2	12.5	5.6	14.0	10.6	8.6	15.5	19.8
1983	3.7	6.7	4.0	5.0	7.0	6.5	12.7	7.8
1984	5.5	3.8	2.4	4.3	3.9	3.4	8.1	5.5
1985	2.9	3.5	2.7	4.8	3.5	4.1	9.6	5.6
1986	5.0	3.0	2.8	3.2	4.3	4.6	11.9	-7.1
1987	4.4	4.0	4.2	3.6	5.0	5.4	6.7	2.6
1988	2.7	4.4	5.2	1.9	4.4	5.6	7.4	0.6
1989	3.6	5.2	4.1	5.2	4.4	4.4	9.2	3.5
1990	4.1	4.5	2.8	5.6	4.9	4.4	8.7	9.9
1991	4.8	4.4	9.5	1.8	7.0	7.3	17.2	4.9

Note: See notes in Table 20.

Note (1): Energy is not a component of the Consumer Price Index, it is a special aggregate.

Source: Statistics Canada, Catalogue 62-001, The Consumer Price Index.

**TABLE 24**  
**CANADIAN INDUSTRIAL PRODUCT PRICE INDEXES**  
**FOR SELECTED COMMODITIES**  
**1986 = 100**

Year	ANNUAL AVERAGE					
	Meat, Fish & Dairy Products	Dairy Products	Fish Products	Potato Products Frozen	Lumber, Sawmill, Other Wood Products	Total All Commodities
1986	100.0	100.0	100.0	100.0	100.0	100.0
1987	104.4	102.8	113.8	103.8	102.4	102.8
1988	104.9	106.2	115.9	107.3	104.3	107.2
1989	105.8	109.8	109.6	117.3	108.3	109.4
1990	108.8	113.6	102.9	124.1	107.6	109.7
1991 (p)	109.8	118.3	111.4	130.7	105.7	108.6
% Change 1991/1990	0.9	4.1	8.2	5.3	-1.7	-1.0
<b>1991 MONTHLY</b>						
January	110.2	115.8	109.6	133.8	102.4	111.1
February	110.6	116.1	109.6	133.8	102.3	110.6
March	110.4	117.0	111.6	131.0	103.4	109.8
April	110.1	117.6	111.3	131.0	105.3	109.1
May	110.6	117.7	111.3	131.0	108.6	108.7
June	110.8	117.7	112.1	127.7	113.4	108.5
July	110.1	117.9	111.6	127.7	111.2	108.2
August	110.0	118.6	111.4	127.7	105.7	107.6
September	109.2	119.7	111.1	131.0	104.7	107.5
October	108.9	120.1	111.4	131.4	102.9	107.4
November	108.2	120.6	112.8	130.8	104.1	107.3
December	108.0	120.6	112.6	131.2	104.7	107.2

p: preliminary

Note: The Industrial Product Price Index (IPPI) measures price changes for major commodities sold by Canadian manufacturers.

Note: The base year for the Industrial Product Price Index was updated from 1981 = 100 to 1986 = 100 in June 1990.

Source: Statistics Canada Catalogue 62-011, Industry Price Indexes.

**TABLE 25**  
**VALUE OF RETAIL TRADE**  
**PRINCE EDWARD ISLAND**

	<b>Retail Sales (1)</b> <b>Total All Stores</b> <b>(\$ Millions)</b>	<b>Percentage</b> <b>Change</b>	<b>Department</b> <b>Store Sales</b> <b>(\$ Thousands)</b>	<b>Percentage</b> <b>Change</b>	<b>Department</b> <b>Store Type</b> <b>Merchandise</b> <b>(\$ Millions)</b>	<b>Percentage</b> <b>Change</b>
1981	432.2	na	56,766	na	134.7	na
1982	443.3	2.6	60,389	6.4	141.5	5.0
1983	508.0	14.6	67,664	12.0	164.6	16.3
1984	560.4	10.3	70,304	3.9	176.9	7.5
1985	589.1	5.1	69,218	-1.5	187.8	6.2
1986	620.6	5.3	71,232	2.9	207.5	10.5
1987	688.9	11.0	81,762	14.8	231.9	11.8
1988	760.0	10.3	88,843	8.7	258.7	11.6
1989	787.7	3.6	89,703	1.0	271.6	5.0
1990	802.5	1.9	86,386	-3.7	279.3	2.8
1991p (2)	725.1	-9.6	57,967 (3)	-32.9	235.8 (3)	-15.6

p : preliminary na: not available

Note (1): Statistics Canada's Retail Trade Survey was redesigned in 1989. This table displays a new historical series which is different from previous retail trade Statistics.

Note (2): Retail sales estimates exclude the Goods and Services Tax (GST). Prior to January 1991, sales data included the Federal Sales Tax (FST). Due to this change in indirect taxes, data for 1991 are not strictly comparable with those of previous years.

Note (3): In addition to the above, the department store data for 1991 was subject to a major structural change which caused a series break in 1991.

Source: Statistics Canada, Catalogues 63-005, Retail Trade; 63-004 Department Store Monthly Sales, and Cansim Main Base.

**TABLE 26**  
**NEW MOTOR VEHICLE SALES**  
**PRINCE EDWARD ISLAND, 1983-1991**

**Value of New Motor Vehicles Sold in Prince Edward Island (\$'000)**  
**by Type and Origin**

Year	Passenger Cars Manufactured			Commercial Vehicles Manufactured			Total Motor Vehicles Manufactured		
	North America	Overseas	Total	North America	Overseas	Total	North America	Overseas	Total
	1983	32,899	6,772	39,671	11,473	2,369	13,842	44,372	9,141
1984	40,014	8,649	48,663	17,121	2,007	19,128	57,135	10,656	67,791
1985	38,249	11,014	49,263	20,668	2,076	22,744	58,917	13,090	72,007
1986	38,583	11,705	50,288	19,861	2,811	22,672	58,444	14,516	72,960
1987	35,818	15,210	51,028	27,264	3,206	30,470	63,082	18,416	81,498
1988	41,681	14,148	55,829	31,270	3,552	34,822	72,951	17,700	90,651
1989	38,500	11,561	50,061	28,785	4,790	33,575	67,285	16,351	83,636
1990	38,594	12,768	51,362	25,614	6,099	31,713	64,208	18,867	83,075
1991	29,604	11,072	40,676	19,677	3,999	23,676	49,281	15,071	64,352
1991/1990 % Change	-23.3	-13.3	-20.8	-23.2	-34.4	-25.3	-23.2	-20.1	-22.5

**Number of New Motor Vehicles Sold in Prince Edward Island**  
**by Type and Origin**

Year	Passenger Cars Manufactured			Commercial Vehicles Manufactured			Total Motor Vehicles Manufactured		
	North America	Overseas	Total	North America	Overseas	Total	North America	Overseas	Total
	1983	3,282	818	4,100	940	275	1,215	4,222	1,093
1984	3,793	968	4,761	1,334	213	1,547	5,127	1,181	6,308
1985	3,416	1,143	4,559	1,472	205	1,677	4,888	1,348	6,236
1986	3,266	1,013	4,279	1,405	228	1,633	4,671	1,241	5,912
1987	2,784	1,299	4,083	1,679	236	1,915	4,463	1,535	5,998
1988	2,970	1,129	4,099	1,836	244	2,080	4,806	1,373	6,179
1989	2,600	849	3,449	1,573	295	1,868	4,173	1,144	5,317
1990	2,467	881	3,348	1,334	326	1,660	3,801	1,207	5,008
1991	2,028	806	2,834	1,016	247	1,263	3,044	1,053	4,097
1991/1990 % Change	-17.8	-8.5	-15.4	-23.8	-24.2	-23.9	-19.9	-12.8	-18.2

Note: North American vehicles: motor vehicles manufactured or assembled in North America. These vehicles may be built by domestic or foreign-owned companies.

Imported vehicles: motor vehicles manufactured or assembled overseas and marketed in Canada by domestic or foreign-owned companies.

Source: Statistics Canada, Catalogue 63-007, New Motor Vehicle Sales and Cansim Main Base.

**TABLE 27**  
**INTERNATIONAL EXPORTS FROM PRINCE EDWARD ISLAND**  
**BY PRINCIPAL TRADING AREAS (\$'000)**  
**1986 - 1991**

	1986	1987	1988	1989	1990	1991p
United States .....	87,537	106,398	88,039	105,786	101,926	90,371
Venezuela .....	6,974	10,575	8,560	4,126	7,286	6,100
France .....	3,076	6,537	6,517	8,111	7,745	15,133
Trinidad-Tobago .....	7,096	6,513	4,848	4,223	5,174	7,115
Japan .....	11,247	8,435	4,721	6,391	5,623	8,928
Italy .....	896	1,603	4,630	958	3,745	3,725
Algeria .....	7,783	0	0	0	708	10,751
Other Countries .....	21,586	21,259	22,764	33,394	36,216	26,004
Total Domestic Exports .....	146,195	161,320	140,079	162,989	168,423	168,127

**BY MAJOR COMMODITIES (\$'000)**  
**1986 - 1991**

	1986	1987	1988	1989	1990	1991p
Live Animals .....	271	320	452	475	942	660
Food, Feed, Beverage & Tobacco .....	124,357	135,626	122,300	139,063	147,776	151,588
Crude Material .....	4,230	5,210	3,487	6,763	5,146	4,117
Fabricated Materials Inedible .....	1,421	3,413	1,264	4,521	4,048	3,677
End Products Inedible .....	15,795	16,705	12,515	12,117	9,153	6,465
Special Transactions Trade .....	73	43	59	49	1,356	1,617
Other .....	48	3	0	0	0	0
Total Domestic Exports .....	146,195	161,320	140,079	162,989	168,423	168,127

p: preliminary

Note: Totals may not equal the sum of the components due to rounding.

Note: The export data was converted to the Harmonized Commodity and Coding Description (H.S. Based) in 1988. Therefore users should use caution when trying to compare data (1988-1991) to previous years.

Source: Statistics Canada, special tabulations from Catalogues 65-003, Exports by Country (H.S. Based); 65-001, Summary of Canadian International Trade.

**TABLE 28**  
**PERSONAL INCOME TAX RETURNS, PRINCE EDWARD ISLAND**  
**INCOME AND TAXES PAID, 1985 - 1989**

	1985	1986	1987	1988	1989
All Returns (no.).....	70,823	75,830	78,470	81,460	84,820
Total Income (\$'000).....	1,044,300	1,146,900	1,257,900	1,408,235	1,543,297
Average Income (\$).....	14,745	15,125	16,030	17,287	18,195
Taxable Returns (no.).....	52,849	56,670	58,900	57,520	61,230
Total Income (\$'000).....	987,100	1,085,900	1,192,100	1,301,365	1,431,260
Average Income (\$).....	18,678	19,162	20,239	22,625	23,375
Federal Tax (\$'000).....	90,500	110,000	127,200	138,424	159,394
Provincial Tax (\$'000).....	52,000	58,500	70,700	78,076	89,832
Total Net Tax (\$'000).....	142,600	168,500	197,800	216,501	249,226
Average Tax (\$)......	2,698	2,973	3,358	3,764	4,070

**ALL RETURNS BY COUNTIES AND SELECTED LOCALITIES, 1989 (1)**

	All Returns			Taxable Returns			
	Number of Returns	Average Income (\$)	Total Income (\$'000)	Number of Returns	Average Income (\$)	Total Income (\$'000)	Total Tax Payable (\$'000)
Kings .....	12,120	16,442	199,283	8,870	20,665	183,301	29,553
Prince.....	29,310	16,740	490,653	21,010	21,510	451,921	73,180
Queens.....	43,100	19,714	849,653	31,190	25,419	792,807	144,247
Total P.E.I. ....	84,820	18,195	1,543,297	61,230	23,375	1,431,260	247,462
Charlottetown (2) .....	22,700	20,850	473,304	16,160	27,283	440,900	84,243

Note: (1) All Returns consists of Taxable Returns (returns with positive taxable income) plus those returns filed with zero taxable income. The data presented in this section of Table 28 represent all taxfilers. Data may vary as other information are based on a statistical sample.

(2): Charlottetown is defined by the boundaries used in the 1981 Census of Population.

Note: Totals may differ between tables due to rounding and confidentiality adjustments.

Source: Revenue Canada Taxation, Taxation Statistics.

**TABLE 29**  
**PERSONAL INCOME TAX RETURNS, 1989 TAXATION YEAR,**  
**ALL RETURNS BY INCOME, PRINCE EDWARD ISLAND**

<b>Taxable Returns</b>	<b>Number of Returns</b>	<b>%</b>	<b>Total Income (\$'000)</b>	<b>%</b>	<b>Taxable Income (\$'000)</b>	<b>%</b>	<b>Total Net Tax (\$'000)</b>	<b>%</b>
Under \$5,000 . . . . .	0	0.0	0	0.0	0	0.0	0	0.0
\$5,000 to 6,000 . . . . .	0	0.0	0	0.0	0	0.0	0	0.0
\$6,000 to 8,000 . . . . .	3,270	5.4	23,181	1.6	23,085	1.8	674	0.3
\$8,000 to 10,000 . . . . .	4,290	7.1	38,586	2.7	38,154	2.9	2,737	1.1
10,000 to 15,000 . . . . .	12,970	21.6	162,422	11.5	158,909	12.1	17,200	6.9
15,000 to 20,000 . . . . .	11,630	19.4	202,406	14.3	195,598	14.9	28,021	11.2
20,000 to 25,000 . . . . .	8,950	14.9	199,063	14.1	188,729	14.3	30,860	12.4
25,000 to 30,000 . . . . .	5,840	9.7	159,541	11.3	148,963	11.3	25,900	10.4
30,000 to 40,000 . . . . .	6,940	11.6	240,361	17.0	220,420	16.7	45,611	18.3
40,000 to 50,000 . . . . .	3,140	5.2	139,457	9.8	127,024	9.6	31,110	12.5
50,000 and over . . . . .	3,040	5.1	251,118	17.7	216,099	16.4	67,113	26.9
<b>Grand Total . . . . .</b>	<b>60,050</b>	<b>100.0</b>	<b>1,416,135</b>	<b>100.0</b>	<b>1,316,981</b>	<b>100.0</b>	<b>249,226</b>	<b>100.0</b>

<b>All Returns</b>	<b>Number of Returns</b>	<b>%</b>	<b>Total Income (\$'000)</b>	<b>%</b>	<b>Taxable Income (\$'000)</b>	<b>%</b>	<b>Total Net Tax (\$'000)</b>	<b>%</b>
Under \$5,000 . . . . .	13,850	16.5	28,037	1.8	29,430	2.1	0	0.0
\$5,000 to 6,000 . . . . .	3,190	3.8	17,632	1.2	17,536	1.2	0	0.0
\$6,000 to 8,000 . . . . .	6,510	7.7	45,207	3.0	44,677	3.1	674	0.3
\$8,000 to 10,000 . . . . .	6,030	7.2	54,357	3.6	53,402	3.8	2,737	1.1
10,000 to 15,000 . . . . .	14,550	17.3	180,952	11.8	176,127	12.4	17,200	6.9
15,000 to 20,000 . . . . .	11,810	14.1	205,542	13.5	198,322	13.9	28,021	11.2
20,000 to 25,000 . . . . .	9,020	10.7	200,550	13.1	189,835	13.3	30,860	12.4
25,000 to 30,000 . . . . .	5,860	7.0	160,227	10.5	149,274	10.5	25,900	10.4
30,000 to 40,000 . . . . .	6,970	8.3	241,575	15.8	220,963	15.5	45,611	18.3
40,000 to 50,000 . . . . .	3,150	3.7	139,948	9.2	127,241	8.9	31,110	12.5
50,000 and over . . . . .	3,070	3.7	254,159	16.6	216,742	15.2	67,113	26.9
<b>Grand Total . . . . .</b>	<b>84,010</b>	<b>100.0</b>	<b>1,528,187</b>	<b>100.0</b>	<b>1,423,549</b>	<b>100.0</b>	<b>249,226</b>	<b>100.0</b>

Note: See general notes on Table 28.

Source: Revenue Canada Taxation, Taxation Statistics.

**TABLE 30**  
**PERSONAL INCOME TAX RETURNS, 1989**  
**ALL RETURNS BY OCCUPATION FOR PRINCE EDWARD ISLAND**

	Number of Returns	Total Income (\$'000)	Average Income \$	Taxable Income (\$'000)	Total Tax (\$'000)
Employees of Businesses .....	27,060	494,433	18,272	468,973	86,241
Employees of Institutions .....	4,620	98,101	21,234	91,270	16,723
Teachers and Professors .....	800	28,202	35,253	25,679	5,937
Federal Government Employees .....	2,430	84,266	34,677	77,952	18,585
Provincial Government Employees .....	6,500	162,957	25,070	150,432	29,686
Municipal Government Employees .....	570	10,909	19,139	10,097	1,826
Armed Forces .....	950	31,280	32,926	28,866	6,225
Federal Crown Corporations .....	1,020	30,824	30,220	28,401	5,786
Provincial Crown Corporations .....	200	4,743	23,715	4,454	738
Unclassified Employees .....	3,720	48,440	13,022	46,285	6,624
TOTAL EMPLOYEES .....	47,890	994,156	20,759	932,410	178,371
Farmers .....	2,050	46,163	22,519	40,986	5,465
Fishermen .....	1,980	44,086	22,266	41,443	6,769
TOTAL FARMERS AND FISHERMEN .....	4,030	90,249	22,394	82,429	12,234
Accountants .....	40	2,494	62,350	2,202	671
Medical Doctors and Surgeons .....	150	16,942	112,947	15,015	5,469
Dentists .....	40	2,940	73,500	2,603	902
Lawyers and Notaries .....	70	5,995	85,643	5,200	1,783
Engineers and Architects .....	na	na	na	na	na
Entertainers and Artists .....	80	717	8,963	671	48
Other Professionals .....	170	4,257	25,041	3,792	880
TOTAL PROFESSIONALS .....	550	33,549	60,998	29,653	9,791
Salesmen .....	120	2,267	18,892	2,029	383
Forestry Operators .....	na	na	na	na	na
Manufacturers .....	130	1,620	12,462	1,541	198
Construction .....	380	7,434	19,563	7,031	1,192
Public Util. & Transport Operators .....	410	6,682	16,298	6,400	939
Wholesale Traders .....	20	165	8,250	124	na
Retail Traders .....	810	13,504	16,672	12,698	2,123
Insurance Agency Operators .....	na	na	na	na	na
Real Estate Agency Operators .....	na	na	na	na	na
Recreational Services Operators .....	na	na	na	na	na
Business Services Operators .....	40	546	13,650	507	74
Other Services Operators .....	970	12,950	13,351	11,824	1,769
Other Business Proprietors .....	30	348	11,600	318	na
TOTAL BUSINESS PROPRIETORS .....	2,810	44,007	15,661	41,142	6,472
Investors .....	3,220	97,246	30,201	78,145	15,198
Property Owners .....	390	7,686	19,708	6,616	1,172
TOTAL INVESTMENT .....	3,610	104,932	29,067	84,760	16,370
Pensioners .....	10,200	120,917	11,855	115,869	9,416
Unclassified .....	14,810	138,111	9,326	135,257	16,189
GRAND TOTAL .....	84,010	1,528,187	18,191	1,423,549	249,226

na: not available

Note: For the breakdowns with less than ten non-taxable filers, the number of taxfilers in that breakdown is rounded to the nearest ten for the all-returns table and the corresponding taxable-returns table. The appropriate subtotal and total counts are edited when necessary to guard against residual disclosure.

Source: Revenue Canada Taxation, Taxation Statistics.

**TABLE 31**  
**VALUE OF BUILDING PERMITS BY TYPE**  
**PRINCE EDWARD ISLAND 1985 - 1991**

Year	Total (\$'000)	Residential (\$'000)	Non-Residential (\$'000)
1985	87,399	43,692	43,707
1986	106,865	65,897	40,968
1987	123,557	72,028	51,529
1988	173,138	86,962	86,962
1989	148,272	73,820	75,051
1990	158,510	75,664	82,846
1991	121,135	60,503	60,632

Source: Statistics Canada, Catalogue 64-001, Building Permits.

**TABLE 32**  
**NUMBER OF BUILDING PERMITS BY TYPE OF DWELLING**  
**PRINCE EDWARD ISLAND 1985 - 1991**

Year	Single Family Dwelling	Semi- detached	Apartment and Row Housing Units	Total
1985	554	80	223	857
1986	696	88	334	1,118
1987	730	96	189	1,015
1988	786	66	357	1,209
1989	598	32	391	1,021
1990	581	50	285	916
1991	487	40	141	668

Source: Prince Edward Island Housing Corporation.

**TABLE 33**  
**NUMBER OF BUILDING PERMITS BY COUNTY**  
**PRINCE EDWARD ISLAND**

<b>Year</b>	<b>Prince County</b>	<b>Queens County</b>	<b>Kings County</b>	<b>Total P.E.I.</b>
1983	196	424	124	744
1984	167	445	126	738
1985	272	473	112	857
1986	271	722	125	1,118
1987	337	555	123	1,015
1988	358	748	103	1,209
1989	183	730	108	1,021
1990	169	642	105	916
1991	147	424	97	668
1991/1990 % Change	-13.0	-34.0	-7.6	-27.1

**1991 Monthly**

January .....	2	5	4	11
February .....	4	12	2	18
March .....	20	13	4	37
April .....	16	74	8	98
May .....	11	50	14	75
June .....	16	36	11	63
July .....	17	46	7	70
August .....	20	32	12	64
September .....	16	74	11	101
October .....	20	32	15	67
November .....	5	47	9	61
December .....	0	3	0	3

Source: Prince Edward Island Housing Corporation.

**TABLE 34**  
**HOUSING STARTS, COMPLETIONS AND UNDER CONSTRUCTION**  
**BY YEAR AND QUARTER FOR PRINCE EDWARD ISLAND**  
**1987-1991**

Year & Quarter	Starts	Completions	Under Construction
<b>1987</b> .....	933	943	*
1st. ....	89	184	251
2nd. ....	396	132	517
3rd. ....	305	294	528
4th. ....	143	333	338
<b>1988</b> .....	1,151	993	*
1st. ....	107	158	286
2nd. ....	427	187	528
3rd. ....	328	234	622
4th. ....	289	414	497
<b>1989</b> .....	815	927	*
1st. ....	83	255	322
2nd. ....	320	167	474
3rd. ....	228	262	441
4th. ....	184	243	380
<b>1990</b> .....	762	683	*
1st. ....	82	112	350
2nd. ....	141	224	269
3rd. ....	280	221	329
4th. ....	259	126	463
<b>1991</b> .....	553	722	*
1st. ....	25	180	307
2nd. ....	265	139	423
3rd. ....	146	184	384
4th. ....	117	219	281

Note: \* Figure is not calculable.

Source: Statistics Canada Catalogue 64-002, Housing Starts & Completions.

**TABLE 35**  
**HOUSING STARTS BY TYPE OF UNIT**  
**PRINCE EDWARD ISLAND**  
**1975 TO 1991**

<b>Year</b>	<b>Total Starts</b>	<b>Single-Detached</b>	<b>Semi-detached and Duplex</b>	<b>Row Houses</b>	<b>Apartments and Other</b>
1975	847	733	22	0	92
1976	842	746	59	0	37
1977	824	577	16	10	221
1978	1,210	990	45	51	124
1979	1,068	801	18	28	221
1980	475	348	33	0	94
1981	203	201	2	0	0
1982	248	179	0	0	69
1983	673	380	30	12	251
1984	643	416	44	5	178
1985	788	559	50	6	173
1986	1,110	783	74	9	244
1987	933	699	88	0	146
1988	1,151	704	55	69	323
1989	815	456	32	8	319
1990	762	483	16	0	263
1991	553	376	19	12	146

Note: Single-Detached comprises only one-dwelling units completely separated on all sides.

- : Semi-detached includes each one of two dwellings separated by a common wall extending from ground to roof, or by a garage. Linked houses were included in this category prior to 1982, but are now included with single-detached. Similarly, duplexes which are described as double dwellings, one above the other, are now included with the category "apartments and other".
- : Row comprises only single-attached houses in a row of three or more dwellings. Row duplexes are not included in the "row" category, but are classified to "apartments and other".
- : Apartment and Other includes dwelling units found in a wide range of structures such as: duplexes, double-duplexes, triplexes, row-duplexes, apartments proper and dwellings over, or at the back of, a store or other non-residential structure.

Source: Statistics Canada Catalogue 64-002, Housing Starts and Completions and Canada Mortgage and Housing Corporation.

**TABLE 36**  
**FARM CASH RECEIPTS**  
**PRINCE EDWARD ISLAND**  
**(\$'000)**

	1986	1987	1988	1989	1990	1991 p
Grains (1) . . . . .	3,934	3,234	4,575	5,403	4,162	3,793
Potatoes . . . . .	57,754	79,935	63,125	119,046	112,170	96,839
Fruits . . . . .	2,064	2,199	2,005	1,626	1,933	2,500
Vegetables . . . . .	4,456	4,663	5,388	5,657	5,302	5,104
Tobacco . . . . .	10,021	12,536	11,322	10,861	6,147	7,952
Other Crops (2) . . . . .	2,332	2,083	1,927	2,078	2,003	1,925
Total Crops . . . . .	80,561	104,650	88,342	144,671	131,717	118,113
Cattle & Calves . . . . .	27,972	28,661	27,241	26,675	30,008	29,373
Hogs . . . . .	25,363	26,515	21,706	21,713	24,360	21,501
Sheep & Lambs . . . . .	284	229	231	223	232	181
Dairy Products . . . . .	30,552	31,894	37,095	37,216	37,717	39,254
Poultry . . . . .	1,322	1,027	2,062	2,377	3,082	3,547
Eggs . . . . .	2,941	2,915	2,872	2,995	2,859	2,945
Other Livestock & Products . . . . .	1,468	3,847	2,523	2,209	1,478	1,054
Total Livestock & Products . . . . .	89,902	95,088	93,730	93,408	99,736	97,855
Crop Insurance Payments . . . . .	2,595	3,200	2,623	954	2,387	2,802
Agricultural Stabilization Act						
Price Stabilization . . . . .	88	53	4,540	678	6	22
Tripartite plans . . . . .	26	6	386	4,285	701	909
Provincial stabilization programs . . . . .	926	466	4,955	3,792	3,382	1,468
Dairy subsidy . . . . .	5,331	5,153	5,422	5,243	4,929	4,758
Other Cash Receipts (3) . . . . .	6,059	3,959	4,419	1,226	3,003	12,768
Total Cash Receipts	185,488	212,575	204,417	254,257	245,861	238,695

p: preliminary

Note (1): Wheat, Oats and Barley

Note (2): Floriculture and nursery are included in other crops.

Note (3): "Other Cash Receipts" include payments made to producers under various federal, provincial and joint federal/provincial programs.

Source: Statistics Canada Catalogue 21-001, Farm Cash Receipts; and 21-603E, Agriculture Economic Statistics.

**TABLE 37**  
**INCOME OF FARM OPERATORS FROM FARMING OPERATIONS**  
**PRINCE EDWARD ISLAND**  
**(\$'000)**

Year	(1) Cash Receipts from Farm Production	(2) Income in Kind	(3) Realized Gross Income	(4) Operating & Depreciation & Charges	(5) Realized Net Income	(6) Value of Inventory Changes	(7) Total Net Income
1982	161,900	2,373	164,273	142,113	22,160	788	22,948
1983	172,332	2,403	174,735	149,379	25,356	-4,933	20,423
1984	191,156	2,417	193,573	155,713	37,860	17,790	55,650
1985	171,275	2,357	173,632	160,421	13,211	1,174	14,385
1986	185,488	2,752	188,240	162,263	25,977	-3,877	22,100
1987	212,575	2,795	215,370	164,364	51,006	-7,959	43,047
1988	204,417	2,747	207,164	173,282	33,882	8,854	42,736
1989	254,257	2,738	256,995	182,313	74,685	-2,743	71,942
1990	245,861	2,870	248,731	179,538	69,193	-6,194	62,999

Note: Realized Gross Income (3) = (1 + 2)  
Realized Net Income (5) = (3-4)  
Total Net Income (7) = (3 + 6) - 4

Note: 1991 data was not available at time of publication.

Source: Statistics Canada Catalogue 21-603E, Agriculture Economic Statistics.

**TABLE 38**  
**CAPITAL VALUE OF ALL FARMS IN PRINCE EDWARD ISLAND 1983 - 1990**  
**(\$ MILLIONS)**

<b>Year</b>	<b>(1) Total</b>	<b>Land and Buildings</b>	<b>(2) Implements &amp; Machinery</b>	<b>(3) Livestock &amp; Poultry</b>
1983	713	479	158	75
1984	720	480	164	76
1985	744	505	165	73
1986	737	490	171	76
1987	731	486	167	78
1988	726	482	166	78
1989	748	507	162	79
1990 p	824	586	158	80

p: preliminary

1: All items have been rounded to \$ million and thus totals may not add due to rounding.

2: Automobiles and motor trucks are included in this area.

3: Livestock and poultry includes the value of animal and fur farms.

Source: Statistics Canada Catalogue 21-603E, Agriculture Economic Statistics.

**TABLE 39**  
**FARM DEBT OUTSTANDING AS AT DECEMBER 31**  
**CLASSIFIED BY LENDER**  
**PRINCE EDWARD ISLAND**

<b>Institutions</b>	<b>1986</b>	<b>1987</b>	<b>1988</b>	<b>1989</b>	<b>1990</b>
Chartered Banks . . . . .	64,000	64,564	75,504	77,373	87,191
Federal Government Agencies . . . . .	46,760	45,592	41,136	38,424	37,730
Provincial Government Agencies . . . . .	28,636	23,002	23,227	21,937	22,986
Credit Unions . . . . .	2,100	2,100	2,100	2,100	2,220
Insurance Trust and Loan Companies . . . . .	948	948	1,288	1,327	1,300
Private Individuals and Others (1) . . . . .	20,473	22,329	22,198	22,071	22,090
Advance Payment Programs . . . . .	<u>5,048</u>	<u>2,513</u>	<u>3,396</u>	<u>0</u>	<u>4,962</u>
<b>TOTAL DEBT OUTSTANDING . . . . .</b>	<b>167,965</b>	<b>161,048</b>	<b>168,849</b>	<b>163,232</b>	<b>178,479</b>

Note (1): Private Individuals and Others includes credit owed to: supply and finance companies, dealers, stores, private individuals and other unclassified credit sources.

Note : For those institutions providing data based on a fiscal year ending March 31, the debt outstanding at that time is used to represent the debt at December 31 of the previous year.

Note: Advance payment programs were taken out of the cash receipts estimates from 1971 to date and moved to the debt outstanding series. These payments are a type of loan made to farmers since no transaction occurs at the time of the advance. Estimates are derived from data supplied by the Canadian Wheat Board and Agriculture Canada.

Source: Statistics Canada Catalogue 21-603E, Agriculture Economic Statistics.

**TABLE 40**  
**FARM PRODUCT PRICE INDEX, PRINCE EDWARD ISLAND**  
**1986 = 100**

Year	Crops	Livestock and Animal Products	Total
1983	112.2	88.5	99.3
1984	131.2	94.3	111.1
1985	105.1	92.5	98.2
1986	100.0	100.0	100.0
1987	137.8	105.1	119.9
1988	119.2	102.6	110.1
1989	167.7	103.5	132.6
1990	150.4	110.9	128.8
1991 p	133.5	108.9	120.0
1991/1990 % Change	-11.3	-1.8	-6.8
<b>1991 Monthly</b>			
January .....	125.1	110.2	117.0
February .....	121.0	113.8	117.1
March .....	117.8	112.6	115.0
April .....	116.6	110.3	113.1
May .....	149.0	112.2	128.9
June .....	147.9	110.7	127.6
July .....	146.5	100.2	121.2
August .....	159.8	111.3	133.3
September .....	130.9	112.5	120.9
October .....	127.0	106.7	115.9
November .....	129.6	104.9	116.1
December .....	130.3	101.1	114.3

p: preliminary

Note: The base year for the Farm Product Price Index was updated from 1981 = 100 to 1986 = 100 in June 1990.

Source: Statistics Canada, Catalogue 62-003, Farm Product Price Index.

**TABLE 41**  
**COMPARISON OF SELECTED CENSUS FARM DATA**  
**PRINCE EDWARD ISLAND, 1976, 1981 & 1986**

	1976	1981	1986
Total Number of Census Farms .....	3,677	3,154	2,833
Total Farm Population .....	15,790	12,015	10,275
Total Land Area (acres) .....	1,399,040	1,399,040	1,399,040
Area in Census Farms (acres) .....	731,035	699,367	673,196
Use of Farm Lands (acres) .....			
Improved Land .....	503,558	500,853	460,399
Cropland (1) .....	391,534	391,118	386,715
Pasture .....	95,787	89,521	55,899
Other .....	16,237	20,214	17,785
Unimproved Land .....	227,477	198,514	212,797
Woodland .....	184,471	161,697	151,225
Other .....	43,006	36,817	61,572
Total Capital Value (\$) .....	326,480,636	699,470,045	738,631,854
Value of Land and Buildings (\$) .....	218,193,757	478,844,864	489,544,771
Value of Machinery & Equipment (\$) .....	75,180,649	148,971,254	170,804,062
Value of Livestock & Poultry (\$) .....	33,106,230	71,653,927	78,283,021

1: Cropland includes the total area of all field crops, plus the acres of fruits, vegetables, greenhouse, mushroom houses and nursery products.

Note: The 1986 Census defines a census farm as a farm, ranch or other agricultural holding with sales of agricultural products of \$250 or more during the 12 months period prior to the Census. Operations which anticipated sales of \$250 or more in 1981 were also included. Comparisons between 1986 data and previous censuses are made in this table and the next three tables. The 1976 data refers to census farms with sales of \$1,200 or more during the year 1975.

Source: Statistics Canada 1981 Census of Canada, Catalogue 92-901 and 1986 Census of Canada, Catalogue 94-129, Population: Canada, provinces, urban size groups, rural non-farm and rural farm acres. Statistics Canada 1986 Census of Agriculture, Catalogue 96-104, Prince Edward Island.

**TABLE 42**  
**CENSUS FARM DATA CLASSIFIED BY SALES CLASS**  
**PRINCE EDWARD ISLAND, 1976, 1981 & 1986**

Total Value of Agricultural Products Sold	1976		1981		1986	
	Number of Farms	%	Number of Farms	%	Number of Farms	%
\$250,000 and over . . . . . ]	-- 149	4.0	82	2.6	152	5.4
\$100,000 - 249,999 . . . . . ]			299	9.5	401	14.2
\$50,000 - 99,999 . . . . .	224	6.1	414	13.1	433	15.3
\$25,000 - 49,999 . . . . .	367	10.0	473	15.0	422	14.9
\$10,000 - 24,999 . . . . .	727	19.8	569	18.0	496	17.5
\$5,000 - 9,999 . . . . .	543	14.8	386	12.2	292	10.3
\$2,500 - 4,999 . . . . .	514	14.0	362	11.5	262	9.2
Under \$ 2,500 . . . . .	1,146	31.1	569	18.1	375	13.2
Institutional Farms . . . . .	7	0.2	(1)	-	(1)	-
Total Number of Farms . . . . .	3,677	100.0	3,154	100.0	2,833	100.0

1: In 1981 and 1986 all Institutional farms are included in their specific class. See note in Table 38 for definitions.

Source: Statistics Canada 1986 Census of Agriculture, Catalogue 96-104, Prince Edward Island;  
 Statistics Canada 1981 Census of Agriculture, Catalogue 96-903, Prince Edward Island.

**TABLE 43**  
**FARMS WITH SALES OF \$2,500 OR MORE**  
**CLASSIFIED BY TYPE OF PRODUCT**  
**PRINCE EDWARD ISLAND 1976, 1981 & 1986**

Product Type	1976		1981		1986	
	Number of Farms	%	Number of Farms	%	Number of Farms	%
Dairy.....	846	33.5	768	29.7	584	23.7
Cattle .....	334	13.2	547	21.2	652	26.5
Hogs.....	216	8.6	255	9.9	221	9.0
Poultry .....	19	0.8	26	1.0	28	1.1
Wheat.....	13	0.5	5	0.2	4	0.1
Small Grains (excluding Wheat Farms) .....	126	5.0	85	3.3	90	3.7
Field Crops, other than Small Grains .....	471	18.7	462	17.9	474	19.3
Fruit and Vegetables .....	30	1.2	53	2.0	60	2.5
Miscellaneous Specialty .....	21	0.8	88	3.4	149	6.1
Livestock Combination .....	319	12.6	204	7.9	127	5.2
Field Crop Combination .....	77	3.0	48	1.8	..	..
Other Combination .....	52	2.1	44	1.7	69	2.8
Total .....	2,524	100.0	2,585	100.0	2,458	100.0

.. : not available

Source: Statistics Canada 1986 Census of Agriculture, Catalogue 96-104, Prince Edward Island.  
 Statistics Canada 1981 Census of Agriculture, Catalogue 96-903, Prince Edward Island.

**TABLE 44**  
**SELECTED 1986 CENSUS OF AGRICULTURE STATISTICS**  
**BY COUNTY, PRINCE EDWARD ISLAND**

	Prince County	Kings County	Queens County	P.E.I. Total
Total Number of Farms . . . . .	992	520	1,321	2,833
Total Area of Farms (acres) . . . . .	256,201	140,817	276,178	673,196
Total Improved Land Area (acres) . . . . .	182,338	80,056	198,005	460,399
Type of Organization				
Individual or Family Farm . . . . .	769	416	1,093	2,278
Partnership . . . . .				
With written agreement . . . . .	56	26	92	174
Without written agreement . . . . .	80	37	80	197
Legally Constituted Company				
Family . . . . .	76	33	45	154
Other (1) . . . . .	5	8	6	19
Other Type (2) . . . . .	6	0	5	11
Total All Types . . . . .	992	520	1,321	2,833

Note 1: A legally constituted company with most of the shares owned by some other person(s) or business.

Note 2: Farms operated by institutions, community pastures, lands operated privately for an estate or trust company, Hutterite colonies and co-operative farms were included in "other" type of organization.

Source: Statistics Canada 1986 Census of Agriculture, Catalogue 96-104, Prince Edward Island.

**TABLE 45**  
**ESTIMATES OF PRIMARY FOREST PRODUCTION\***  
**PRINCE EDWARD ISLAND**  
**CUBIC METRES (000'S)**

	1987	1988	1989	1990	1991
Logs and Bolts . . . . .	86	91	106	103	100
Pulpwood . . . . .	55	46	66	65	39
Other Round Wood . . . . .	28	28	28	28	28
Total Industrial Wood . . . . .	169	165	200	196	167
Fuelwood . . . . .	310	310	216	216	216
Fuel Chips (1) . . . . .	20	35	35	30	28
Total Production	499	510	451	442	411

Note (1): Fuel chips were converted from green tonnes to cubic metres; 1 green tonne = 1.2 cubic metres.

Source: Prince Edward Island Department of Energy and Forestry, Forestry Division.

**TABLE 46**  
**FISH LANDINGS AND VALUE, PRINCE EDWARD ISLAND**  
**(MILLIONS)**

Year	Groundfish		Pelagic & Estuarial		Lobster & Shellfish		Irish Moss		Total	
	Weight Lbs.	Value \$	Weight Lbs.	Value \$	Weight Lbs.	Value \$	Weight Lbs.	Value \$	Weight Lbs.	Value \$
1984	41.6	4.5	15.6	3.3	21.6	28.3	34.7	1.7	113.5	37.8
1985	34.2	4.8	20.3	3.6	26.6	40.9	38.4	2.5	119.5	51.9
1986	30.1	5.6	33.9	4.8	31.4	55.0	27.8	1.8	123.2	67.2
1987	28.4	7.5	34.0	4.9	29.8	58.4	30.6	2.1	122.8	73.0
1988	30.4	4.6	29.2	4.3	33.9	66.7	33.1	2.6	126.6	78.3
1989	37.3	6.0	18.3	3.2	36.6	60.2	32.7	3.3	124.8	72.6
1990	43.4	6.5	33.3	4.3	37.6	50.8	32.4	3.4	146.8	65.1
1991 p	41.7	7.3	23.2	2.3	37.1	57.2	21.4	2.1	123.4	68.9

p: Preliminary

Note: Components may not total due to rounding.

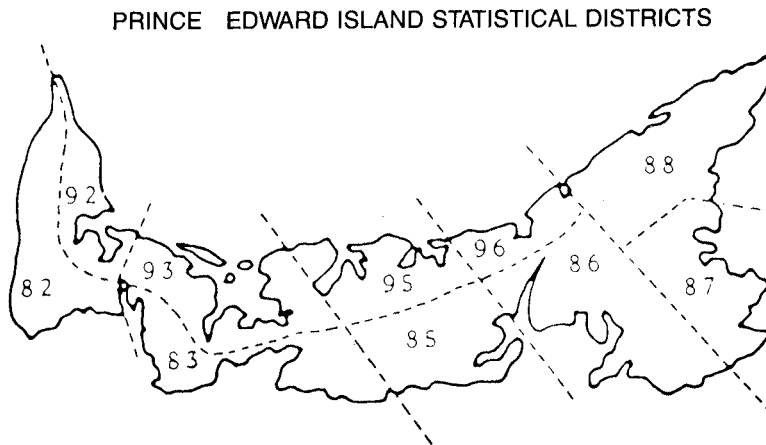
Source: Department of Fisheries and Oceans, compiled by Prince Edward Island Department of Fisheries and Aquaculture.

**TABLE 47**  
**PRINCE EDWARD ISLAND**  
**LOBSTER LANDINGS STATISTICS COMPARISON**  
**(TOTAL POUNDS)**

Statistical Districts	1986	1987	1988	1989	1990	1991 p
88	3,783,160	4,016,549	5,103,172	4,714,639	5,764,016	5,744,099
87	5,314,338	5,455,378	6,226,926	5,873,165	5,993,613	5,585,591
96	391,446	401,677	710,609	480,595	574,146	736,556
86	643,493	653,827	651,707	594,805	545,985	430,750
95	978,204	1,008,997	1,115,903	1,029,253	1,194,774	1,498,709
85	265,190	267,211	333,170	255,211	280,738	198,407
93	868,964	967,595	1,670,027	1,372,046	1,165,542	1,495,889
83	1,577,310	1,345,072	1,048,363	973,285	934,726	908,187
92	2,113,058	2,101,634	1,879,421	2,508,383	2,976,911	3,425,253
82	2,392,470	2,649,572	3,255,835	3,450,902	3,021,411	2,743,244
Total Pounds	18,327,633	18,867,512	21,995,133	21,252,284	22,451,862	22,766,685
Dollar Value	44,494,234	49,532,000	56,128,893	46,058,302	40,348,000	48,521,000

p: preliminary

Source: Department of Fisheries and Oceans, compiled by Prince Edward Island Department of Fisheries and Aquaculture.



**TABLE 48**  
**AVERAGE PRICE RECEIVED BY PRINCE EDWARD ISLAND FISHERMEN,**  
**SELECTED YEARS AND SPECIES**  
**(CENTS PER POUND)**

<b>Year</b>	<b>Cod</b>	<b>Hake</b>	<b>Herring</b>	<b>Mackerel</b>	<b>Smelts</b>	<b>Lobster</b>	<b>Oysters</b>
1974	9.4	6.1	5.5	4.2	12.0	101.7	19.8
1975	9.8	7.4	7.3	5.2	9.1	94.7	23.3
1976	11.7	7.1	6.7	5.9	10.6	100.0	23.0
1977	14.6	8.9	7.6	6.8	10.8	110.2	24.5
1978	13.5	8.6	9.5	8.9	15.4	149.7	27.0
1979	17.9	9.7	11.5	10.6	17.7	152.7	33.2
1980	13.9	9.2	14.1	11.9	10.0	131.7	44.9
1981	16.1	10.0	10.4	11.6	10.0	155.9	53.1
1982	12.3	10.3	10.0	11.9	10.1	185.6	53.0
1983	12.5	6.0	10.0	12.0	15.0	188.0	53.0
1984	12.5	6.0	10.0	12.0	20.0	169.7	60.0
1985	14.0	8.0	10.0	12.0	60.0	223.6	60.0
1986	25.0	9.0	10.0	12.0	40.0	242.7	65.0
1987	30.0	30.0	11.0	12.0	45.0	262.5	75.0
1988	15.0	10.0	9.0	12.0	30.0	255.0	90.0
1989	20.0	12.0	5.0	12.0	44.8	216.7	90.0
1990	20.0	12.0	6.0	15.0	35.0	179.7	95.0
1991 p	35.0	12.0	4.0	12.0	40.0	213.1	na

p: preliminary

na: not available

Source: Department of Fisheries and Oceans, compiled by Prince Edward Island Department of Fisheries and Aquaculture.

**TABLE 49**  
**TOTAL NUMBER OF TOURISTS VIA AUTO VEHICLES (1),**  
**PRINCE EDWARD ISLAND**  
**(MAY 15TH - OCTOBER 31ST)**

	1985	1986	1987	1988	1989	1990	1991
Number of Tourist Parties .....	212,869	216,897	226,825	230,302	236,637	220,190	210,297

Note 1: Tourist Auto Vehicle includes cars, vans, motor homes, vehicles with trailers and have been revised to include pick-up trucks.

Source: Prince Edward Island Department of Tourism & Parks, Tourism Branch.

**TABLE 50**  
**AMOUNT EXPENDED BY NON-RESIDENT TOURISTS BY CATEGORY**  
**ALL MODES (1) (MAY 15TH - OCTOBER 31ST)**  
**(MILLIONS \$)**

	1985	1986	1987	1988	1989	1990	1991
Gas and Oil .....	6.5	7.9	8.7	8.1	8.8	7.3	8.2
Auto Repairs & Maintenance ...	0.5	0.4	0.4	1.1	1.2	0.3	2.4
Food & Beverage (excluding alcohol) .....	4.6	5.5	6.0	6.0	6.6	4.9	6.3
Alcoholic Beverages .....	2.7	2.8	3.1	4.1	4.4	2.9	3.0
Restaurant Meal & Beverages ...	15.0	19.4	21.6	25.7	28.1	22.2	23.3
Accommodations .....	14.3	19.1	21.3	24.0	26.2	25.6	27.2
Recreation & Entertainment ....	5.1	7.7	8.5	7.3	8.0	8.2	8.0
Handcrafts .....	4.5	4.9	5.5	6.4	7.0	8.0	5.2
Other .....	5.4	6.4	7.2	7.3	8.0	4.7	7.3
Total .....	58.6	74.1	82.3	90.0	98.3	84.1	90.9

Note 1: All Modes includes Auto, bus, motorcoach, air and cruise ships.

Source: Prince Edward Island Department of Tourism & Parks, Tourism Branch.

**TABLE 51**  
**TOURIST PARTIES BY MODE OF TRAVEL - 1991 SEASON**  
**PRINCE EDWARD ISLAND**  
**(MAY 15TH - OCTOBER 31ST)**

<b>Mode</b>	<b>Spring (May 15 - June 11)</b>	<b>Summer (June 12 - Sept 12)</b>	<b>Fall (Sept 13 - Oct. 31)</b>	<b>Total 1991 Season</b>
Auto and Pick-up Truck Parties . . . .	20,624	156,440	33,233	210,297
Percent . . . . .	9.1	69.0	14.7	92.8
Air Parties . . . . .	2,905	10,947	2,508	16,360
Percent . . . . .	1.3	4.8	1.1	7.2
Total Parties . . . .	23,539	167,387	35,741	226,657
Percent . . . . .	10.4	73.9	15.8	100.0

Source: Prince Edward Island Department of Tourism & Parks, Tourism Branch.

**TABLE 52**  
**PRINCE EDWARD ISLAND TOURIST AUTO PARTIES BY ORIGIN**  
**(MAY 15TH - OCTOBER 31ST, 1991)**

<b>Tourist Origin</b>	<b>Parties</b>	<b>Percent</b>
Newfoundland . . . . .	3,585	1.7
Nova Scotia . . . . .	71,991	34.2
New Brunswick . . . . .	59,464	28.3
Quebec . . . . .	17,291	8.2
Ontario . . . . .	25,401	12.1
Other Canada . . . . .	2,605	1.2
New England States . . . . .	13,884	6.6
Other States . . . . .	16,076	7.6
Total . . . . .	210,297	100.0

Source: Prince Edward Island Department of Tourism & Parks, Tourism Branch.

**TABLE 53**  
**PRINCE EDWARD ISLAND RESTAURANT, CATERER AND TAVERN RECEIPTS**  
**BY KIND OF BUSINESS (\$'000)**

Year	Restaurants Licensed	Restaurants Unlicensed	Take-Outs	Caterers	Taverns	Total
1986	18,620.8	16,894.8	9,263.9	1,742.8	2,162.9	48,687.6
1987	22,010.8	18,746.0	9,248.3	2,389.0	3,150.6	55,547.5
1988	23,612.4	18,400.5	10,419.8	2,224.5	4,882.6	59,542.4
1989	25,871.3	19,034.9	11,166.6	2,570.5	5,768.3	64,414.2
1990	26,819.3	20,762.4	13,309.2	2,853.3	5,849.8	69,596.2
1991	26,144.0	20,219.0	12,335.6	3,121.3	5,806.3	67,628.6
1991/1990 % Change	-2.5	-2.6	-7.3	9.4	-0.7	-2.8
<b>1991 Monthly</b>						
January . . . . .	1,363.0	1,250.8	811.0	188.0	408.5	4,021.5
February . . . . .	1,510.3	1,383.6	858.5	221.5	410.7	4,384.8
March . . . . .	1,701.2	1,499.7	989.4	545.2	432.5	5,168.2
April . . . . .	1,725.1	1,509.5	888.8	257.3	424.3	4,805.2
May . . . . .	2,272.0	1,751.3	1,020.2	275.1	452.5	5,771.3
June . . . . .	2,661.9	1,841.4	1,173.0	240.6	508.4	6,425.5
July . . . . .	3,695.1	2,253.0	1,468.0	169.1	569.5	8,154.8
August . . . . .	3,787.6	2,280.7	1,451.3	214.1	670.0	8,404.0
September . . . . .	2,444.4	1,680.8	966.8	216.5	529.0	5,837.7
October . . . . .	1,787.0	1,588.2	936.4	294.0	506.0	5,111.7
November . . . . .	1,637.6	1,593.2	913.5	240.4	481.1	4,866.1
December . . . . .	1,558.8	1,586.8	858.7	259.5	413.8	4,677.8

p: preliminary

Note: Totals may not equal the sum of components due to rounding.

Source: Statistics Canada Catalogue 63-011, Restaurants, Caterer and Tavern Statistics.

**TABLE 54**  
**NUMBER OF LOCATIONS AND TOTAL RECEIPTS**  
**FROM MAJOR ACCOMODATION GROUPS, PRINCE EDWARD ISLAND**

Year	Hotels		Motels		(2) Tourist Courts and Cabins		(3) Tent and Trailer Campgrounds		Total	
	No.	\$'000	No.	\$'000	No.	\$'000	No.	\$'000	No.	\$'000
1981	25	11,077	55	6,209	75	1,216	51	2,251	206	20,753
1982	25	12,864	56	5,600	74	1,363	48	2,328	203	22,115
1983	24	14,568	54	5,778	72	1,501	47	2,229	197	24,076

Year	(1) Hotels, Motels, & Motor Hotels		Tourist Courts and Cabins		Tent and Trailer Campgrounds		Total	
	No.	\$'000	No.	\$'000	No.	\$'000	No.	\$'000
1984		75 19,000	69	2,300	29	1,600	173	22,900
1985 r		72 25,500	22	x	11	1,400	105	26,900
1986 r		59 30,200	27	1,700	33	x	119	35,300
1987 r		69 35,300	29	x	31	3,600	129	40,400
1988 p		67 37,400	19	x	30	3,800	116	42,800

Note: r: revised                      p: preliminary                      x: confidential

Note (1): Data for hotels and motels have been aggregated due to classification changes which made the separate estimates unreliable between 1984 and 1985.

Note (2): Tourist Courts and Cabins also include: Outfitters, Recreation and Vacation Camps.

Note (3): Tent and Trailer Campgrounds also include: Guest Houses, Tourist Homes, Lodging Houses and Residential Clubs.

Source: Statistics Canada Catalogue 63-204, Traveller Accommodation Statistics.

**TABLE 55**  
**PRINCIPAL STATISTICS OF PRINCE EDWARD ISLAND**  
**MANUFACTURING INDUSTRIES,**

**MANUFACTURING ACTIVITY (1)**

Year	Establishments	Production & Related Workers				Cost of Fuel & Electricity (\$'000)	Cost of Materials & Supplies (\$'000)	Value of Shipments of Goods of Own Manufacture (\$'000)	Value Added (\$'000)
		Male	Female	Hours Paid ('000)	Wages (\$'000)				
1983	140	1,553	848	5,030	35,615	10,273	185,767	285,176	93,148
1984	146	1,480	860	4,876	35,327	10,759	188,943	289,048	87,158
1985	141	1,598	1,096	5,594	41,362	11,717	192,923	296,874	94,042
1986	141	1,508	1,110	5,210	39,211	8,652	208,867	325,798	107,008
1987	135	na	na	na	na	7,579	230,209	362,511	129,952
1988	146	1,787	1,139	5,775	49,800	8,000	243,900	391,700	139,700

Note 1: These statistics refer to production activity of manufacturing establishments.

**TOTAL ACTIVITY (2)**

Year	Working Owners & Partners	Administrative Office And Other Non-Manufacturing Employees			Total Employees		Cost of Materials Supplies & Goods for Resale (\$'000)	Value of Shipments & Other Revenues (\$'000)	Value Added (\$'000)
		Male	Female	Salaries (\$'000)	Number	Salaries & Wages (\$'000)			
1983	37	458	202	14,054	3,061	49,669	227,188	330,835	97,386
1984	40	410	213	14,350	2,963	49,677	232,580	344,169	98,643
1985	na	451	243	16,118	3,388	57,480	239,884	354,122	104,328
1986	na	496	304	18,809	3,418	58,020	261,193	387,656	116,540
1987	na	na	na	na	3,530	60,698	276,838	416,915	137,727
1988	na	519	310	21,000	3,755	70,800	297,100	454,900	149,700

Note 2: These statistics refer to total activity of manufacturing firms and therefore include non-manufacturing activities of manufacturing establishments and activities of separate head offices, sales offices and auxiliary units.

Note: Statistics are based on the 1980 Standard Industrial Classification.

na: not available

Source: Statistics Canada Catalogue 31-203, Manufacturing Industries of Canada, National and Provincial Areas.

**TABLE 56**  
**VALUE ADDED BY MAJOR GROUPS AND INDUSTRY**  
**PRINCE EDWARD ISLAND (\$'000)**

**MANUFACTURING ACTIVITY (1)**

	1984	1985	1986	1987	1988
Fish Products Industry . . . . .	17,741	16,277	24,177	na	27,000
Dairy Products Industry . . . . .	12,362	x	x	na	x
Other Food and Beverage Industry . . . . .	x	x	34,543	na	48,000
Total Food and Beverage Industry . . . . .	47,779	49,777	58,720	na	75,000
Wood Industries . . . . .	3,384	3,299	3,889	na	4,700
Furniture & Fixtures Industry . . . . .	x	x	x	na	x
Printing, Publishing & Allied Industries . . . . .	x	10,486	x	na	12,400
Machinery Industries . . . . .	x	x	x	na	6,000
Non-Metallic Mineral Products Industries . . . . .	x	x	1,460	na	2,200
Miscellaneous Manufacturing Industries . . . . .	3,248	4,456	48,771	na	4,500
Total All Industries . . . . .	87,158	94,042	107,008	129,952	139,700

**TOTAL ACTIVITY (2)**

	1984	1985	1986	1987	1988
Fish Products Industry . . . . .	21,867	19,735	28,491	26,149	30,600
Dairy Products Industry . . . . .	12,976	x	x	x	x
Other Food Industries . . . . .	17,382	34,766	35,372	53,875	48,500
Total Food Industry . . . . .	52,225	54,501	63,863	80,024	79,100
Wood Industries . . . . .	7,453	6,976	7,429	7,902	9,500
Furniture & Fixtures Industry . . . . .	x	x	x	x	x
Printing, Publishing & Allied Industries . . . . .	x	10,439	x	10,472	12,400
Machinery Industries . . . . .	x	x	x	3,403	6,500
Non-Metallic Mineral Products Industries . . . . .	x	x	1,428	2,110	2,200
Miscellaneous Manufacturing Industries . . . . .	3,224	4,364	4,657	4,518	4,500
Total All Industries . . . . .	98,643	104,328	116,540	137,727	149,700

x: confidential  
na: not available

Note 1: These statistics refer to production activity of manufacturing establishments. Information pertaining to Major Groups of Industries involved in Manufacturing Activities in 1987 is not available.

Note 2: These statistics refer to total activity of manufacturing firms.

Source: Statistics Canada Catalogue 31-203, Manufacturing Industries of Canada, National and Provincial Areas.

**TABLE 57**  
**ESTIMATED VALUE OF SHIPMENTS, MANUFACTURING INDUSTRIES**  
**PRINCE EDWARD ISLAND (\$'000)**

	1988	1989	1990	1991
Fish Products Industry . . . . .	88,789	86,783	127,876	126,624
Total Food Industries . . . . .	266,014	273,818	347,661	341,829
Wood Industries . . . . .	14,175	10,741	9,076	6,716
Printing, Publishing and Allied Industries . . . . .	16,466	16,910	16,401	16,036
Fabricated Metal Products Industries . . . . .	13,516	11,952	10,718	9,767
Non-Metallic Mineral Products Industries . . . . .	4,442	4,855	4,671	4,181
Chemical and Chemical Products Industries . . . . .	22,391	25,372	25,922	27,994
Other Manufacturing Industries . . . . .	6,130	6,666	6,755	4,403
<b>TOTAL ALL INDUSTRIES (1) . . .</b>	<b>391,331</b>	<b>403,989</b>	<b>457,584</b>	<b>446,763</b>

**MONTHLY TOTAL  
ALL INDUSTRIES**

January . . . . .	25,491	27,700	26,328	25,524
February . . . . .	24,982	25,846	25,382	25,005
March . . . . .	28,439	27,664	29,079	27,297
April . . . . .	27,542	28,937	27,461	25,355
May . . . . .	41,987	48,958	53,437	59,216
June . . . . .	50,134	42,743	55,922	55,904
July . . . . .	35,782	33,470	44,778	47,529
August . . . . .	31,298	34,030	49,992	40,708
September . . . . .	33,445	35,112	47,480	41,140
October . . . . .	33,302	38,116	39,679	40,392
November . . . . .	29,834	32,121	30,989	32,356
December . . . . .	29,095	29,292	27,057	26,337

Note (1): Total for All Industries does not equal sum of Industries listed, as Fish Products Industry is a component of Total Food Industries and only selected industries are represented.

Source: Statistics Canada Catalogue 31-001, Inventories Shipments and Orders in Manufacturing Industries.

**TABLE 58**  
**PRINCE EDWARD ISLAND ELECTRICITY STATISTICS**  
**CAPABILITY AND PEAK LOAD (M.W.)**

	1986	1987	1988	1989	1990	1991
Gross Capability .....	115	115	114	114	114	114
Firm Power Peak Load within Province .....	95	105	113	127	133	135
Indicated Reserve .....	40	35	25	22	21	29
Indicated Reserve as a Percentage of Firm Peak Power Load .....	42.1	33.3	22.1	17.3	15.8	21.5

Note: 1991 forecast.

Source: Statistics Canada Catalogue 57-204, Electric Power Statistics.

**TWELVE MONTH AVERAGE OF ELECTRICITY REQUIREMENTS (MWH)**

	1986	1987	1988	1989	1990	1991
Total Received from Other Provinces .....	50,809	49,221	51,626	51,863	55,974	57,470
Net Generation on P.E.I. ....	989	4,697	7,061	8,701	6,731	5,922
Deliveries to Other Provinces .....	0	0	23	0	0	0
Total Supply .....	51,798	53,918	58,664	60,564	62,705	63,392

Source: Statistics Canada Catalogue 57-001, Electric Power Statistics.

**TWELVE MONTH AVERAGE OF RESIDENTIAL COST OF 500 KWH  
OF ELECTRICITY (\$ PER MONTH)**

	1986	1987	1988	1989	1990	1991
Charlottetown						
Maritime Electric Co. Ltd. ....	46.83	45.41	50.20	48.42	52.40	60.92

Source: Prince Edward Island Department of Energy and Forestry, Energy Branch.

MW = Megawatt, MWH (Megawatt hour) = Watt hour x 10<sup>6</sup>, KWH (Kilowatt hour) = Watt hour x 10<sup>3</sup>.

**TABLE 59**  
**SALES OF REFINED PETROLEUM PRODUCTS**  
**PRINCE EDWARD ISLAND, 1985 - 1991**  
**(CUBIC METRES)**

	1985	1986	1987	1988	1989	1990	1991
Motor Gasoline. . . .	165,361	167,295	170,837	180,062	182,214	189,858	184,110
Diesel . . . . .	48,042	48,454	51,078	56,084	71,833	80,304	95,360
Light Fuel Oil . . . .	122,615	129,528	137,354	151,138	164,182	168,728	152,014
Heavy Fuel Oil . . . .	8,695	9,672	29,560	41,344	41,909	37,487	31,318
Other. . . . .	35,392	50,395	62,138	57,434	37,987	34,996	35,274
Total . . . . .	380,105	405,344	450,967	486,062	498,125	511,373	498,076

One Cubic Metre = 1,000 Litres

Source: Statistics Canada Catalogue 45-004, Refined Petroleum Products.

**TABLE 60**  
**SCHEDULE OF GASOLINE SALES IN PRINCE EDWARD ISLAND FOR THE**  
**FISCAL YEAR ENDED MARCH 31ST**  
**(CUBIC METRES)**

Fiscal Year	Taxed	Tax Exempt Gasoline			
	Gasoline (net)	Farmers	Fishermen	Other	Total
1984	161,347	1,750	5,545	1,527	8,822
1985	161,561	1,616	4,735	1,520	7,871
1986	160,369	1,423	4,416	1,376	7,215
1987	166,692	1,263	3,745	1,248	6,256
1988	168,815	1,124	3,089	772	4,985
1989	175,145	1,217	2,349	1,323	4,889
1990	177,198	na	na	na	3,802
1991	173,424	na	na	na	3,660

One Cubic Metre = 1,000 Litres

na: not available

Note: As of 1990 Revenue Division is recording total purchases of Tax Exempt Gasoline.

Source: Prince Edward Island Department of Finance, Revenue Division.

**TABLE 61**

**TRANSPORTATION STATISTICS, PRINCE EDWARD ISLAND  
BORDEN, P.E.I. - CAPE TORMENTINE, N.B. FERRY SERVICE**

Year	Autos & Pick-up Trucks	Recreation Vehicles	Buses	Motorcycles & Bicycles	Commercial Vehicles	Passengers
1985	546,292	30,514	3,816	9,762	115,228	1,614,950
1986	570,413	30,400	4,007	8,387	117,142	1,662,088
1987	585,617	31,581	4,725	8,034	131,476	1,713,110
1988	616,379	31,985	5,052	6,803	141,407	1,777,292
1989	642,704	32,314	4,887	6,689	152,678	1,847,317
1990	637,510	30,104	3,528	6,189	160,460	1,791,286
1991 (1)	622,564	28,026	3,496	5,124	149,330	1,742,563

**WOOD ISLANDS, P.E.I. - CARIBOU, N.S. FERRY SERVICE**

Date	Autos & Pick-up Trucks	Recreation Vehicles	Buses	Motorcycles & Bicycles	Commercial Vehicles	Passengers
April 26-Dec.09/85	168,399	14,725	1,384	6,129	20,848	527,108
April 29-Dec.10/86	171,412	14,401	1,404	5,483	19,672	530,095
May 7-Dec. 20/87	172,273	15,237	1,470	5,395	21,350	538,591
April 26-Dec.12/88	180,760	14,638	1,484	4,699	22,376	551,555
April 24-Dec.06/89	181,099	13,808	1,432	3,997	21,228	548,563
April 27-Dec.20/90	176,457	12,220	1,314	3,760	24,930	529,385
April 29-Dec.20/91 (1)	175,484	10,718	1,354	3,742	21,987	526,586

**SOURIS, P.E.I. - GRINDSTONE, MAGDALEN ISLANDS FERRY SERVICE**

Year	No. of Voyages	Automobiles	Buses, Vans, Motor Homes Trailers & Trucks	Motorcycles & Bicycles	Heavy Machinery	Passengers
1985	281	11,728	5,984	1,667	24	45,442
1986	284	13,727	5,945	1,487	18	52,040
1987	277	15,464	4,032	1,487	29	53,207
1988	274	14,786	5,605	1,426	19	53,730
1989	288	16,401	5,832	1,593	21	59,712
1990	286	15,871	5,301	1,544	26	56,882
1991	295	18,361	6,031	1,830	22	62,224

Note (1): Statistics are based on the traffic leaving the Island given the new fare collection system introduced in 1991.

Source: Marine Atlantic and Northumberland Ferries Limited compiled by Prince Edward Island Department of Transportation and Public Works.

**TABLE 62**  
**WATER FREIGHT - TONNES**  
**PRINCE EDWARD ISLAND, 1989 - 1990**

Ports	1989		1990	
	Loaded	Unloaded	Loaded	Unloaded
Charlottetown .....	8,253	531,698	15,765	492,767
Georgetown .....	0	0	4,971	0
Souris .....	9,229	24,896	13,612	18,870
Summerside .....	35,071	105,574	60,319	110,507
Other .....	0	54,525	0	0
PEI Total .....	52,553	716,693	94,667	622,144

Source: P.E.I. Department of Transportation and Public Works.

**TABLE 63**  
**PRINCE EDWARD ISLAND SHIPPING**  
**NUMBER OF ARRIVALS AND DEPARTURES, BY PORT**  
**1989 - 1990**

Ports	1989			1990		
	Arrivals	Departures	Total	Arrivals	Departures	Total
Charlottetown .	362	360	722	314	315	629
Georgetown . .	1	0	1	0	2	2
Souris .....	32	31	63	27	28	55
Summerside . .	59	66	125	104	104	208
Other .....	60	60	120	0	0	0
PEI Total .....	514	517	1,031	445	449	894

Source: P.E.I. Department of Transportation and Public Works.

**TABLE 64**  
**ISLAND TRANSIT PASSENGER TRAFFIC**  
**CHARLOTTETOWN TO TIGNISH - YEAR ROUND**  
**1985 - 1991**

Year	Number of Passengers	Percentage Change
1985 .....	9,817	-2.4
1986 .....	8,790	-10.5
1987 .....	8,656	-1.5
1988 .....	7,600	-12.2
1989 .....	6,819	-10.3
1990 .....	5,399	-20.8
1991 .....	5,047	-6.5

Source: P.E.I. Department of Transportation and Public Works.

**TABLE 65**  
**RAIL FREIGHT - CARLOADS**  
**PRINCE EDWARD ISLAND, 1982 - 1989**

<b>Year</b>	<b>Inward</b>	<b>Outward</b>	<b>Total</b>
1982	3,008	3,152	6,160
1983	3,176	2,738	5,914
1984	3,251	2,165	5,416
1985	2,736	1,708	4,444
1986	2,573	412	2,985
1987	1,446	150	1,596
1988	589	412	1,001
1989	344	357	701
% Change			
1989/1988	-41.6	-13.3	-30.0

Note: Prince Edward Island Rail service was discontinued December 31, 1989.

Source: Prince Edward Island Department of Transportation and Public Works.

**TABLE 66**  
**AIR PASSENGERS TO AND FROM PRINCE EDWARD ISLAND**  
**1987 - 1991**

	<b>To P.E.I.</b>	<b>From P.E.I.</b>	<b>Total</b>
1987	91,939	94,358	186,297
1988	108,994	106,529	215,523
1989	104,985	107,507	212,492
1990	98,571	102,632	201,203
1991	91,212	95,136	186,348

Note: These figures represent passengers flown by: Air Nova, Air Canada, Air Atlantic and Canadian Airlines.

Source: Prince Edward Island Department of Transportation and Public Works.

**TABLE 67**  
**PRINCE EDWARD ISLAND MOTOR VEHICLE REGISTRATIONS**  
**1981 - 1990**

Year	Cars	Trucks *	Trailers	Other	Total
1981	48,564	14,969	7,073	5,376	75,982
1982	48,177	14,962	6,852	5,521	75,512
1983	50,521	15,629	6,778	5,727	78,655
1984	52,538	16,499	5,529	5,705	80,271
1985	54,533	17,131	1,310	5,600	78,574
1986	56,224	18,045	1,085	5,547	80,901
1987	60,169	19,589	1,334	3,034	84,126
1988	61,983	20,321	1,804	2,774	86,882
1989	63,947	20,452	5,140	2,481	92,020
1990	58,604	25,951	2,004	3,188	89,747

\* The 1983, 84, 85, 86 and 87 figures for Trucks includes 462, 549, 582, 579 and 430 trucks respectively under the Pro-rated Program.

Note: Other includes buses, motorcycles, farm trucks, snowmobiles and all other vehicles.  
 Since 1984 trailers are registered for five years.

Note: 1991 data not available at time of publication.

Source: Highway Safety Division, Department of Transportation & Public Works.

**TABLE 68**  
**PRINCE EDWARD ISLAND SCHOOL ENROLMENT**

School Year	Elementary (1-6)	Secondary (7-12)	Special Education (1)	Total
1982-83	12,440	12,923	233	25,596
1983-84	12,265	12,840	251	25,356
1984-85	12,193	12,562	293	25,048
1985-86	12,120	12,434	324	24,878
1986-87	12,097	12,328	348	24,773
1987-88	12,037	12,297	304	24,638
1988-89	12,159	12,241	308	24,708
1989-90	12,270	12,202	272	24,744
1990-91	12,217	12,287	-	24,504
1991-92	12,234	12,471	-	24,705

Note (1): From 1990-91 on Special Education enrolments are included in Elementary and Secondary enrolments.

Note: Enrolment figures are for public schools including vocational high schools and private schools.

Source: Prince Edward Island Department of Education.

**TABLE 69**  
**POST SECONDARY ENROLMENTS**  
**PRINCE EDWARD ISLAND**

School Year (1)	University of Prince Edward Island					Holland College (3)
	Full-Time	Part-Time	Summer	Veterinary Medicine	Master of Science Program	
1981-82	1,390	763	920	..	..	761
1982-83	1,596	663	1,027	..	..	802
1983-84	1,676	710	1,144	..	..	810
1984-85	1,720	689	1,070	..	..	837
1985-86	1,768	781	1,184	..	..	825
1986-87 (2)	1,837	685	1,090	52	..	881
1987-88 (2)	1,921	753	1,239	98	10	845
1988-89 (2)	2,023	813	1,291	142	16	918
1989-90 (2)	2,126	849	1,321	184	22	912
1990-91 (2)	2,317	905	1,381	185	27	967
1991-92 (2)	2,384	951	1,438	190	35	1,152

.. : nil

Note 1: The University of Prince Edward Island school year runs from May of the first year to April the following year, including two summer sessions. Full-time and part-time figures for U.P.E.I. are recorded as of December 1 of each school year. Holland College school year runs from September to June with the exception of some programs that continue through the summer. Holland College figures are recorded as of December 1 each year and are obtained from the MPHEC Census.

Note 2: Full-time enrolment has been adjusted to separate students at the University of Prince Edward Island Faculty of Veterinary Medicine, and Master of Science Program.

Note 3: See Table 70 for a detailed breakdown of enrolment at Holland College.

Source: Registrar's Office, University of Prince Edward Island and Holland College.

**TABLE 70**  
**HOLLAND COLLEGE ENROLMENTS**  
**1985/86 TO 1990/91**

<b>TYPE OF COURSES</b>	<b>1985/86</b>	<b>1986/87</b>	<b>1987/88</b>	<b>1988/89</b>	<b>1989/90</b>	<b>1990/91</b>
Post Secondary	825	881	845	918	912	967
Canada Employment & Immigration Commission	1,252	769	901	658	580	714
Canadian Job Strategy	--	--	217	266	436	716
Adult Academic Night	536	461	485	482	487	593
Continuing Education	3,337	3,407	3,015	3,337	3,300	3,336
Extension	690	902	780	434	420	477
Short Courses	255	857	389	573	869	1,111
Vocational Adult	257	234	237	269	279	310
Vocational High School	295	257	247	227	192	152
Pre Vocational	198	179	117	149	135	146
Leadership Institute	1,048	1,094	979	693	650	483
General Education Diploma Testing	120	159	180	330	260	264
Total	8,813	9,200	8,392	8,336	8,520	9,269

Note: Holland College as a community college offers a variety of non-post secondary courses such as those listed above. More information concerning these non-post secondary courses can be obtained by contacting the registrar's office at Holland College.

--: nil

Source: Registrar's Office, Holland College.

**TABLE 71**  
**PRINCE EDWARD ISLAND EDUCATIONAL EXPENDITURES**

<b>Fiscal Year</b>	<b>(1) Vocational &amp; Post Secondary (\$)</b>	<b>(2) Elementary &amp; Secondary (\$)</b>	<b>Total (\$)</b>
1984-85	23,639,000	78,030,000	101,669,000
1985-86	25,227,400	81,368,100	106,595,500
1986-87	28,826,700	87,065,700	115,892,400
1987-88	32,491,600	92,268,100	124,759,700
1988-89	33,971,600	100,176,400	134,094,000
1989-90	37,978,600	107,687,600	145,666,200
1990-91	40,247,400	111,400,700	151,648,100

Note (1): Starting in 1985-86 fiscal year Vocational and Post Secondary includes grant for the Atlantic Veterinary College.

Note (2): Elementary and Secondary includes grants to Regional School Boards and programs operated directly by the Department of Education, as well as administration costs for the Department. Starting in 1990-91 fiscal year Provincial Library Service is excluded.

Source: Prince Edward Island Department of Education.

**TABLE 72**  
**PRINCE EDWARD ISLAND HEALTH AND HOSPITAL CARE STATISTICS**

	<b>1986</b>	<b>1987</b>	<b>1988</b>	<b>1989</b>	<b>1990</b>	<b>1991</b>
Practising Physicians (1) . . . . .	140	139	146	147	147	144
Physicians Per '000 Population (2) . . . .	1.11	1.09	1.14	1.13	1.13	1.11
Population Per Physicians (2) . . . . .	904	916	880	884	886	905
Total Bed Capacity . . . . .	1,996	2,030	2,011	1,964	2,001	1,986
- Active Treatment Hospitals . . . . .	690	690	690	694	694	679
- Licensed Nursing Homes . . . . .	419	453	434	434	471	471
- Other Institutions (includes Manors, Hillsborough Hospital, Dr. Eric Found Health Centre (3) . . . . .	887	887	887	836	836	836
Bed Capacity Per '000 Population (2) . .	15.8	15.9	15.6	15.1	15.4	15.2

Note (1): As of 1987, physicians are calculated by full-time equivalents (FTE).

Note (2): Population estimates as of June 1st of each year.

Note (3): As of 1989, other institutions no longer include CFB Summerside and Detox Units in each county.

Source: Prince Edward Island Hospital and Health Services Commission, and Aging and Extended Care Division Department of Health and Social Services.

**TABLE 73**  
**ACTIVE TREATMENT HOSPITALS, PRINCE EDWARD ISLAND**

<b>Fiscal Year</b>	<b>Expenditures</b>	<b>Rate of Growth of Expenditures %</b>	<b>Cost Per Capita \$</b>	<b>Rate of Growth of Cost Per Capita %</b>
1984-85	48,169,511	5.7	382.30	5.0
1985-86	51,138,786	6.2	403.94	5.7
1986-87	51,221,460	0.2	402.37	-0.4
1987-88	53,840,300	5.1	418.99	4.1
1988-89	58,632,698	8.9	451.02	7.6
1989-90	63,921,993	9.0	490.20	8.7
1990-91	68,654,588	7.4	526.90	7.5

Note: The Prince Edward Island population figures for 1981-86 have been revised, therefore, the cost per capita (\$) and rate of growth of cost per capita (%) have been revised accordingly. Population estimates as of June 1.

Source: Prince Edward Island Hospital and Health Services Commission.

**TABLE 74**  
**PHYSICIANS SERVICES, PRINCE EDWARD ISLAND**

<b>Fiscal Year</b>	<b>Total Number of Services</b>	<b>Services Amount \$</b>	<b>Cost Per Service \$</b>	<b>Cost Per Capita \$</b>
1983-84	849,600	14,871,408	17.50	118.88
1984-85	880,400	15,203,001	17.27	120.66
1985-86	970,700	17,968,065	18.51	141.93
1986-87	971,900	18,672,850	19.21	146.68
1987-88	993,233	19,916,947	20.05	155.00
1988-89	1,062,691	22,136,629	20.83	170.28
1989-90	1,074,120	23,477,358	21.86	180.04
1990-91	1,106,652	25,940,302	23.44	199.08

Note: The Prince Edward Island population figures have been revised, therefore, the cost per capita (\$) have been revised accordingly. Population estimates as of June 1.

Note: Previous tables gave the total number of claims, this table gives the total number of services. The difference being a physician may supply more than one service per claim.

Source: Prince Edward Island Hospital and Health Services Commission.

**TABLE 75**  
**RCMP CRIME STATISTICS, PRINCE EDWARD ISLAND**  
**1988 - 1991**

<b>Offenses</b>	<b>Actual Occurrences</b>				<b>Offenses Cleared by Charge</b>			
	<b>1988</b>	<b>1989</b>	<b>1990</b>	<b>1991</b>	<b>1988</b>	<b>1989</b>	<b>1990</b>	<b>1991</b>
Murder, Homicide & Attempted Murder .....	0	0	0	2	0	0	0	2
Sexual Assault and Other Sexual Offenses .....	72	98	112	115	42	27	74	64
Wounding and Assault.....	375	377	366	450	119	156	178	225
Robbery .....	15	10	9	6	10	4	3	5
Break & Enter .....	546	600	706	1,021	143	167	161	226
Theft of Motor Vehicle .....	101	126	118	172	44	48	40	54
Theft over \$1000 .....	88	93	165	139	22	34	24	13
Theft Under \$1000.....	1,351	1,224	1,365	1,614	226	157	176	218
Possession of Stolen Goods & Frauds.....	244	278	393	414	152	95	185	201
Possession of Offensive Weapon .....	16	15	15	21	8	4	6	9
Other Criminal Code .....	1,838	2,162	2,528	2,772	210	295	433	443
Federal Statutes .....	446	400	267	289	26	20	20	24
Provincial Statutes.....	2,897	2,461	2,190	2,679	1,778	1,353	1,172	1,364
Municipal By-Laws (1).....	34	26	273	290	9	7	229	261
Narcotics & Food and Drug Act Violations .....	187	172	205	136	86	106	103	59
<b>Total .....</b>	<b>8,210</b>	<b>8,042</b>	<b>8,712</b>	<b>10,120</b>	<b>2,875</b>	<b>2,473</b>	<b>2,804</b>	<b>3,168</b>

Note: These figures are for R.C.M.P. jurisdictions only and do not include any of the data available from municipal forces. Provincial Statutes do not include traffic cases. Offenses cleared by charge represent those offenses in which the person(s) or party was charged in court.

Note: 1991 data are preliminary in nature and subject to change.

Note (1): The large increase in Municipal By-Laws for 1990 and 1991 over previous years is due to parking tickets being added to the system.

Source: R.C.M.P., "L" Division.

**TABLE 76**  
**PERSONS HELD IN PRINCE EDWARD ISLAND JAILS**  
**1988 - 1991**

	Lock-Ups				Remand				Sentenced			
	1988	1989	1990	1991	1988	1989	1990	1991	1988	1989	1990	1991
<b>Provincial Correctional Centre</b>												
Adult												
Male .....	1,001	943	1,007	1,218	62	81	85	96	946	943	699	707
Female .....	62	69	95	76	3	10	3	4	64	53	62	66
Total .....	1,063	1,012	1,102	1,294	65	91	88	100	1,010	1,001	761	773
<b>Prince County Jail</b>												
Adult												
Male .....	426	347	412	512	47	26	78	66	415	164	353	347
Female .....	24	9	17	10	0	2	0	0	0	1	2	0
Total .....	450	356	429	522	47	28	78	66	415	165	355	347
<b>Kings County Jail</b>												
Adult												
Male .....	176	158	209	257	2	8	17	22	5	134	228	198
Female .....	7	3	10	4	0	0	0	0	0	1	0	
Total .....	183	161	219	261	2	8	17	22	5	135	228	198
<b>Total All Jails</b>												
Adult												
Male .....	1,603	1,448	1,628	1,987	111	115	180	184	1,366	1,241	1,280	1,252
Female .....	93	81	122	90	3	12	3	4	64	60	64	66
Total .....	1,696	1,529	1,750	2,077	114	127	183	188	1,430	1,301	1,344	1,318

Source: Prince Edward Island Department of Justice

**TABLE 77**  
**PERSONS HELD IN PRINCE EDWARD ISLAND YOUTH FACILITIES**  
**TOTAL DAYS BY CUSTODY AND YOUTH FACILITY**  
**1990 - 1991**

	Lock-Up		Remand		Open Custody		Secure Custody		Facility Total		
	1990	1991	1990	1991	1990	1991	1990	1991	1990	1991	
Prince Edward Island											
Youth Centre .....	62	58	730	1,518	--	--	7,568	5,886	8,360	7,462	
Tyne Valley											
Youth Centre .....	--	--	--	--	2,200	2,629	--	--	2,200	2,629	
Georgetown											
Youth Centre .....	--	--	--	--	2,576	2,532	--	--	2,576	2,532	
Community Placements..	--	--	--	--	10	20	--	--	10	20	
Adult Facilities .....	111	126	--	--	--	--	--	--	111	126	
TOTAL .....	173	184	730	1,518	4,786	5,181	7,568	5,886	13,257	12,769	

.. : nil

Source: Prince Edward Island Department of Justice.

**TABLE 78**  
**ENTRIES UNDER THE SUPREME COURT OF PRINCE EDWARD ISLAND**  
**FISCAL YEAR ENDED MARCH 31ST**  
**1981 - 1991**

<b>Fiscal Year</b>	<b>Cases</b>	<b>Liens</b>	<b>Chattel Mortgages</b>	<b>Book Debts</b>	<b>Judgements</b>	<b>Divorces</b>
1981	2,446	5,660	12,572	1,317	1,182	210
1982	2,538	6,047	10,212	1,360	1,193	233
1983	2,545	7,095	13,614	1,464	1,380	234
1984	2,110	9,252	16,387	1,547	1,076	222
1985	2,263	9,355	16,806	1,890	1,059	234
1986	2,401	9,475	17,671	2,830	1,152	207
1987	1,830	8,864	18,843	1,917	820	212
1988	1,761	7,542	19,597	1,863	764	309
1989	1,961	7,775	18,081	1,949	914	283
1990	2,099	7,938	17,276	1,845	1,067	334
1991	2,948	6,338	17,093	1,666	1,507	303

Source: Supreme Court Law Courts, Prince Edward Island.

**TABLE 79**  
**PROVINCE OF PRINCE EDWARD ISLAND REVENUE (\$)**  
**FISCAL YEARS ENDED MARCH 31ST, 1989, 1990 AND 1991, PUBLIC ACCOUNTS**

	1989	1990	1991
<b>GOVERNMENT OF CANADA</b>			
Equalization .....	184,858,000	195,096,000	206,237,000
Income Tax on Electricity .....	2,000,230	2,541,331	1,407,383
Economic Regional Development Agreement .....	11,554,325	6,443,866	13,967,478
Canada Manpower .....	2,894,923	2,966,372	2,893,593
Canada Assistance Plan .....	21,902,201	24,748,990	28,492,250
Established Programs Financing .....	44,271,625	45,155,375	41,623,000
Extended Health Care .....	6,297,000	6,685,000	6,739,000
Other .....	8,127,836	15,551,555	10,213,039
<b>TOTAL</b> .....	<b>281,906,140</b>	<b>299,188,489</b>	<b>311,572,743</b>
Percentage Increase over Previous Year .....	15.2%	6.1%	4.1%
<b>PROVINCIAL GOVERNMENT</b>			
Sales Tax .....	85,912,038	93,286,060	95,071,662
Real Property Tax .....	24,336,202	26,650,999	29,117,847
Personal Income Tax .....	86,494,838	99,389,064	103,354,175
Corporate Income Tax .....	17,645,909	15,160,449	12,681,357
Other Taxes .....	40,930,020	43,401,095	54,086,570
Licenses & Permits .....	5,606,045	6,198,026	7,571,256
Fees & Services .....	11,838,141	14,241,066	13,767,767
Liquor Control Commission Sales .....	9,400,730	9,717,374	9,518,044
Other Sales .....	4,847,638	4,776,595	4,442,530
Investment Interest .....	31,402,100	34,665,612	36,402,580
<b>TOTAL</b> .....	<b>318,413,661</b>	<b>347,486,340</b>	<b>366,013,788</b>
Percentage Increase over Previous Year .....	10.4%	9.1%	5.3 %
<b>TOTAL REVENUE RECEIVED</b> .....	<b>600,319,801</b>	<b>646,674,829</b>	<b>677,586,531</b>
Percentage Increase over Previous Year .....	12.6%	7.7%	4.8%

Source: Prince Edward Island Department of Finance, Accounting Services.

**TABLE 80**

**PROVINCE OF PRINCE EDWARD ISLAND ORDINARY EXPENDITURES (\$)  
FISCAL YEARS ENDED MARCH 31ST, 1989, 1990 AND 1991, PUBLIC ACCOUNTS**

	<b>1989</b>	<b>1990</b>	<b>1991</b>
Department of Agriculture . . . . .	27,144,149	27,524,211	20,397,219
P.E.I. Agriculture Development Corporation . .	944,850	1,384,261	2,417,282
P.E.I. Grain Elevators Corporation . . . . .	168,605	574,144	289,200
Department of Community & Cultural Affairs .	16,535,429	13,153,919	15,045,572
Department of Environment (1) . . . . .	--	7,576,566	7,593,243
Land Use Commission . . . . .	360,906	353,705	177,499
P.E.I. Housing Corporation . . . . .	2,130,207	2,381,600	2,480,037
Department of Education . . . . .	134,094,030	145,666,191	151,648,154
Executive Council . . . . .	1,756,398	1,914,605	2,008,772
Department of Finance . . . . .	7,439,233	8,712,574	8,953,086
Employee Benefits (2) . . . . .	--	8,310,499	8,976,017
P.E.I. Lending Authority . . . . .	1,138,988	965,267	1,617,908
Department of Industry . . . . .	15,915,205	13,164,746	14,017,743
P.E.I. Development Agency . . . . .	16,276,548	17,407,498	23,852,102
Department of Health & Social Services . . . .	91,250,765	98,278,783	112,167,350
Hospital & Health Services Commission . . . .	105,194,388	114,246,664	120,103,194
Department of Energy and Forestry . . . . .	9,098,140	8,297,819	8,241,345
P.E.I. Energy Corporation . . . . .	1,247,203	1,274,707	5,846,175
Department of Justice & Attorney General . . .	15,296,311	18,088,408	20,190,535
Department of Fisheries & Aquaculture . . . . .	2,525,880	2,453,616	2,754,124
Legislative Assembly . . . . .	1,970,674	2,916,531	2,416,819
Department of Transportation & Public Works .	47,503,800	51,068,385	49,969,145
Other Current Expenditures . . . . .	16,518,379	9,564,699	8,382,094
Debt Charges . . . . .	80,914,643	86,889,253	94,807,426
Department of Tourism & Parks . . . . .	8,171,026	9,239,104	9,608,122
Department of Labour . . . . .	1,496,320	1,909,723	2,230,434
	<b><u>605,092,077</u></b>	<b><u>653,317,478</u></b>	<b><u>696,190,598</u></b>
Percentage Increase (Decrease) over Previous Year . . . . .	10.8%	8.0%	6.6%
Surplus/Deficit . . . . .	- 4,472,276	- 6,642,649	- 18,604,067

Note (1): Department of Environment was formed on June 6, 1989. Previously, the Department of Community and Cultural Affairs was responsible for matters dealing with the environment.

Note (2): Employee Benefits now administer their own budget and are recorded separately. Prior to 1990, Employee Benefits were included in 'Other Current Expenditures'.

Source: Prince Edward Island Department of Finance, Accounting Services, Public Accounts.

**TABLE 81**  
**REVENUES AND EXPENDITURES BY ALL LEVELS OF GOVERNMENT**  
**NATIONAL ACCOUNTS BASIS, PRINCE EDWARD ISLAND, 1986-1990**  
**(\$ MILLIONS)**

	1986	1987	1988	1989	1990
<b><u>EXPENDITURES</u></b>					
<b>FEDERAL</b>					
Current Expenditures .....	240	233	266	257	266
Transfers to Persons .....	277	281	305	321	338
Subsidies & Assistance .....	37	45	51	68	67
Interest on Debt .....	66	73	86	98	102
Transfers to Government .....	233	242	279	303	324
Capital Expenditure .....	14	11	31	29	18
Capital Consumption Allowance .....	-14	-15	-16	-17	-19
Canada Pension Plan .....	32	38	44	51	57
Total (1) .....	885	908	1,046	1,110	1,153
<b>PROVINCIAL, MUNICIPAL, HOSPITALS</b>					
Current Expenditures .....	309	346	380	402	409
Transfers to Persons .....	69	83	93	99	107
Subsidies & Assistance .....	34	29	30	34	39
Interest on Debt .....	64	70	79	84	91
Capital Expenditure .....	59	59	59	65	79
Capital Consumption Allowance .....	-33	-34	-36	-40	-43
Total (2) .....	502	553	605	644	682
<b><u>REVENUES</u></b>					
<b>FEDERAL - Total (3)* .....</b>	<b>315</b>	<b>333</b>	<b>371</b>	<b>393</b>	<b>429</b>
<b>PROVINCIAL, MUNICIPAL, HOSPITALS</b>					
Federal Transfers (4) .....	233	242	279	303	324
Taxes & Other Revenues (5) .....	275	313	356	379	413
Total .....	508	555	635	682	737
Own Source Revenues (3) + (5) .....	590	646	727	772	842
Total Expenditures (1) + (2)-(4) .....	1,154	1,219	1,372	1,451	1,511
Overall (Deficit) .....	-564	-573	-645	-679	-669

\*: Principally Direct and Indirect Taxes.

Source: Statistics Canada Catalogue 13-213, Provincial Economic Accounts.

**TABLE 82**

**PRINCE EDWARD ISLAND PROVINCIAL GOVERNMENT EMPLOYMENT**

<b>Year</b>	<b>Classified Employees</b>		<b>Unclassified Employees</b>		<b>Total Employees</b>	
1985	2,964		789		3,753	
1986	2,994		864		3,858	
1987	3,044		963		4,007	
1988	3,139		1,243		4,302	
1989	3,256		1,110		4,366	
1990	3,333		1,195		4,528	
1991	3,314		1,095		4,409	
<b>1991</b>	<b>Classified</b>		<b>Unclassified</b>		<b>Total</b>	
	<b>Full Time</b>	<b>Part Time</b>	<b>Full Time</b>	<b>Part Time</b>	<b>Full Time</b>	<b>Part Time</b>
Agriculture .....	117	13	38	3	155	16
Community & Cultural Affairs .....	105	33	25	24	130	57
Education .....	46	2	14	1	60	3
Energy & Forestry .....	51	0	48	0	99	0
Environment .....	54	2	14	0	68	2
Finance .....	168	1	22	0	190	1
Fisheries and Aquaculture .....	22	3	3	0	25	3
Health and Social Services .....	1,027	418	280	58	1,307	476
Industry .....	36	0	6	0	42	0
Justice and Attorney General .....	245	42	52	18	297	60
Labour .....	29	0	8	0	37	0
Tourism & Parks .....	50	15	28	2	78	17
Transportation & Public Works .....	452	79	284	3	736	82
Addiction Services .....	4	0	3	0	7	0
Auditor General's Office .....	17	2	1	0	18	2
Civil Service Commission .....	28	2	3	14	31	16
Energy Corporation .....	0	0	13	0	13	0
Executive Council .....	12	1	13	0	25	1
Hospital & Health Services Commission .....	33	0	6	0	39	0
Housing Corporation .....	31	1	22	0	53	1
Agricultural Development Corporation .....	11	5	12	0	23	5
Land Use Commission .....	1	0	1	0	2	0
Legislative Assembly .....	0	0	13	0	13	0
Lending Authority .....	17	0	1	0	18	0
Liquor Control Commission .....	99	0	28	0	127	0
Public Utilities Commission .....	9	1	2	0	11	1
Treasury Board .....	15	0	1	0	16	0
Workers' Compensation Board .....	14	0	1	0	15	0
P.E.I. Development Agency .....	1	0	30	0	31	0
<b>TOTAL .....</b>	<b>2,694</b>	<b>620</b>	<b>972</b>	<b>123</b>	<b>3,666</b>	<b>743</b>

Note: Figures now include employees of P.E.I. Development Agency (this agency was formed when the Market Development Centre and Industrial Enterprises Incorporated were merged). The Milk Commission is now under the Agriculture heading.

Note: Figures are recorded as of December each year.

Note: Unclassified full-time employees also include executive and contract employees.

Source: Civil Service Commission and Prince Edward Island Development Agency.

**TABLE 83**  
**PROVINCIAL GOVERNMENT EMPLOYMENT AND PAYROLL IN**  
**PRINCE EDWARD ISLAND**

Year	General Government		Provincial Government Enterprise	
	Total Payroll (\$'000)	Average Number of Employees	Total Payroll (\$'000)	Average Number of Employees
1983	84,696	4,473	5,710	294
1984	88,037	4,555	4,927	239
1985	92,254	4,556	6,107	276
1986	98,243	4,687	6,612	289
1987	105,007	4,827	5,623	264
1988	111,338	4,893	5,859	278
1989	116,615	4,986	6,134	292
1990	132,132	5,268	7,769	325
1991	144,591	5,402	7,978	343
<b>Quarterly</b>				
1990				
Jan.- March	29,897	4,888	1,941	294
Apr.- June	31,848	4,983	2,012	326
July - Sept.	36,489	6,015	1,835	332
Oct.- Dec.	33,898	5,187	1,981	350
1991				
Jan.- March	30,987	4,977	1,979	353
Apr.- June	35,054	5,345	2,091	378
July - Sept.	42,410	6,100	1,929	354
Oct.- Dec.	36,146	5,186	1,979	286

Source: Statistics Canada Catalogue 72-007, Provincial & Territorial Government Employment, and Cansim Main Base.

**TABLE 84**  
**FEDERAL GOVERNMENT EMPLOYMENT AND PAYROLL IN**  
**PRINCE EDWARD ISLAND**

Year	General Government		Federal Government Enterprise		Average Number of Military Personnel
	Total Payroll (\$'000)	Average Number of Employees	Total Payroll (\$'000)	Average Number of Employees	
1983	75,771	2,976	23,944	1,007	936
1984	88,929	3,300	25,072	992	970
1985	96,801	3,512	25,087	963	964
1986	100,595	3,466	24,504	925	955
1987	103,944	3,405	27,730	986	953
1988	106,320	3,393	26,620	933	939
1989	111,874	3,376	27,597	920	916
1990	115,340	3,180	27,622	885	751
1991	104,348	2,761	29,779	891	408
1990					
Jan.- March	29,977	3,254	6,958	883	877
Apr.- June	27,336	3,241	6,261	866	821
July - Sept.	31,437	3,236	7,680	912	678
Oct.- Dec.	26,590	2,989	6,723	880	627
1991					
Jan.- March	29,273	2,940	7,670	867	616
Apr.- June	26,626	3,052	6,913	889	577
July - Sept.	27,606	2,788	8,043	934	347
Oct.- Dec.	20,843	2,761	7,153	876	94

Source: Statistics Canada Catalogue 72-004, Federal Government Employment and Cansim Main Base.