



**FINANCIAL REPORT**

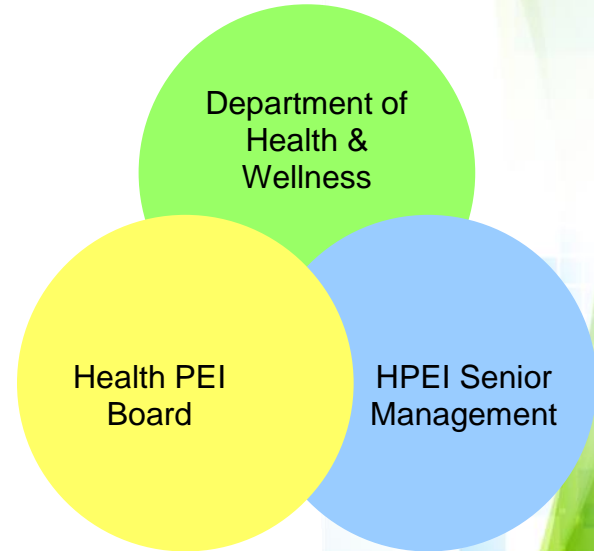
2020 Annual General Meeting

**Health** PEI

# Health PEI Financial Report

- Operations of the PEI Health Plan, as established by the Minister of Health & Wellness
- Accounting in accordance with Public Sector Accounting Standards

## Management Framework



**Health** PEI

# Summary of Financial Results

(in millions)

|                               | 2019-20<br>Budget | 2019-20<br>Actual | 2018-19<br>Actual |
|-------------------------------|-------------------|-------------------|-------------------|
| Operating Activities:         |                   |                   |                   |
| Revenues                      | 714.69            | 711.37            | 695.14            |
| Expenditures                  | <u>714.69</u>     | <u>711.37</u>     | <u>695.14</u>     |
| Sub-total: operating          | -                 | -                 | -                 |
| Special Warrant: Prior Period | -                 | -                 | 5.74              |
| Capital Activities:           |                   |                   |                   |
| Revenues                      | 20.67             | 19.31             | 31.98             |
| Amortization                  | -                 | 18.83             | 16.67             |
| Capital Transfers             | <u>-</u>          | <u>0.51</u>       | <u>-</u>          |
| Sub-total: capital            | <u>20.67</u>      | <u>(0.03)</u>     | <u>15.31</u>      |
| Annual Surplus (Deficit)      | 20.67             | (0.03)            | 21.05             |

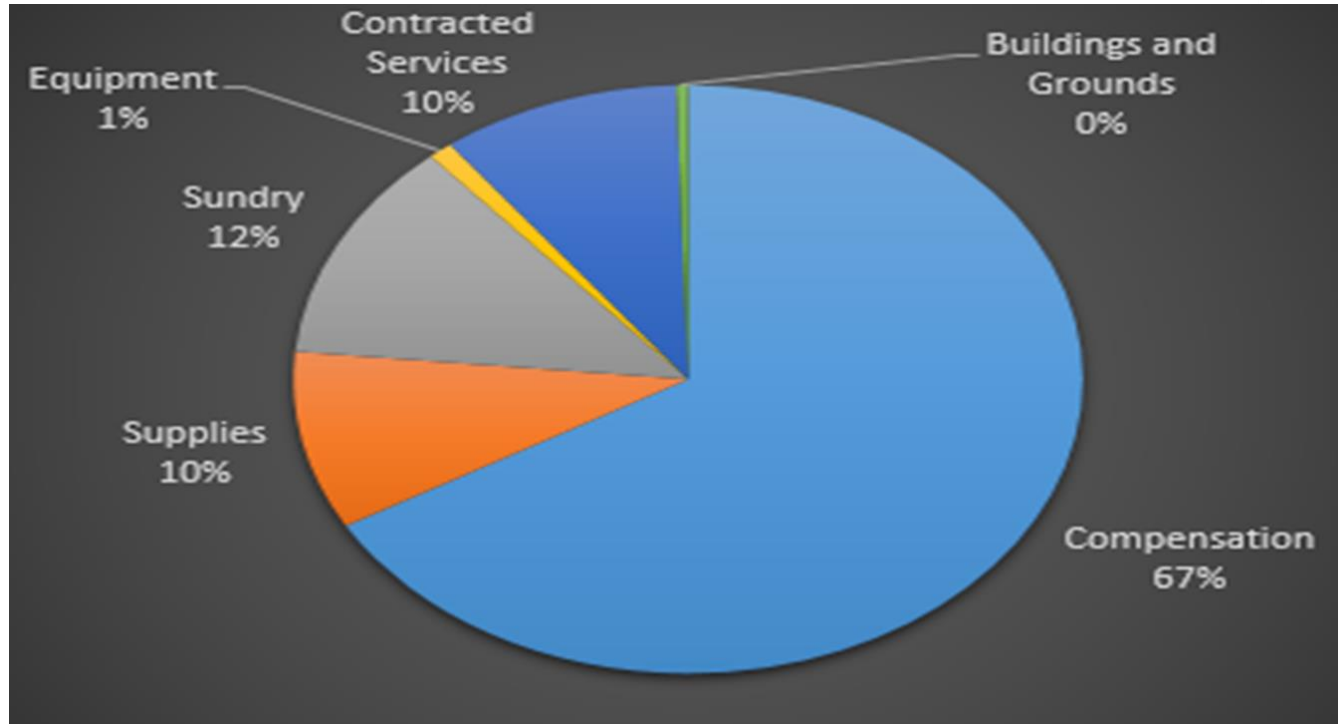
# Summary of 2019-20 Expenditures

(by sector, in millions)

| Sector              | 2019-20<br>Budget | 2019-20<br>Actuals | Variance       |
|---------------------|-------------------|--------------------|----------------|
| Home Based Care     | \$ 21.02          | \$ 20.28           | \$ 0.74        |
| Hospital Services   | \$ 318.57         | \$ 313.29          | \$ 5.28        |
| Long-term Care      | \$ 106.24         | \$ 108.93          | \$ (2.69)      |
| Physicians          | \$ 143.96         | \$ 146.43          | \$ (2.47)      |
| Primary Care        | \$ 58.99          | \$ 59.14           | \$ (0.15)      |
| Provincial Pharmacy | \$ 39.51          | \$ 39.16           | \$ 0.35        |
| Corporate Services  | \$ 26.40          | \$ 24.14           | \$ 2.26        |
| <b>Total</b>        | <b>\$ 714.69</b>  | <b>\$ 711.37</b>   | <b>\$ 3.32</b> |

# Summary of 2019-20 Expenditures

(by category)



# Acknowledgements

- Health PEI Staff
- Health PEI Board of Directors
- Office of the Auditor General

