



PROVINCE OF PRINCE EDWARD ISLAND
eighth annual
STATISTICAL REVIEW
1981

Prepared by:
Planning & Statistics Division
Department of Finance
March, 1982

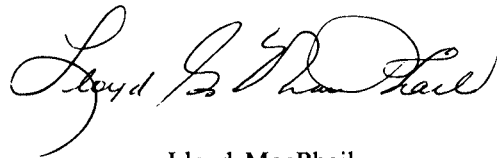
FOREWORD

The eighth annual Statistical Review contains extensive statistics on a wide range of economic and social variables for Prince Edward Island. The popularity of this publication is evidence of the ever-increasing demand for statistical knowledge of the Province, not only among government agencies, but from business, farm, and volunteer community at large, as well as the general public.

The Review is prepared by the Planning and Statistics Division of the Department of Finance. This Division provides a statistical service to the Government of Prince Edward Island and to the public. Other publications of the Division are the Quarterly Statistical Review and Economic Trends. Distribution of these publications is handled by the Island Information Services.

Of particular importance to the statistical work of the Division during 1981 was the preparation for and assistance in the conduct of the 1981 Census of Canada. In recognition of its efforts, the Division was presented with a Service Award by Statistics Canada.

If you have any suggestions, comments or statistical enquiries, the Planning and Statistics Division is always ready to assist you.

A handwritten signature in cursive script, reading "Lloyd MacPhail". The signature is written in dark ink and is positioned above the printed name and title.

Lloyd MacPhail
Minister of Finance

PREFACE AND ACKNOWLEDGEMENTS

The statistics included in this publication have been obtained from several sources, including Statistics Canada, Provincial Government Departments, and other institutions and agencies.

Special thanks to Statistics Canada; Baxter Ramsay for his graphical designs; to all provincial departments and others who supplied data; and especially to Charlotte Holland for putting the report together.

John Palmer
Director, Planning and Statistics

TABLE OF CONTENTS

I.	P.E.I. Economic Review	7
II.	Population, Vital Statistics and Labour Force	
	TABLE	
	1. Population and Vital Statistics	17
	2. Components of International and Interprovincial Migration	18
	3. In-migration to P.E.I. by Province of Origin	19
	4. Out-migration from P.E.I. by Province of Destination	19
	5. Population by Sex and Age Group	20
	6. Working Age Population, Labour Force, Employment and Unemployment	21
	7. Seasonally Adjusted Labour Force, Participation, Employment, Unemployment Monthly	22
	8. Employment Index, Average Weekly Wages and Salaries	23
	9. Estimates of Employees by Non-Agricultural Industries for P.E.I.	24
III.	General Economic Indicators	
	10. Personal Income P.E.I.	25
	11. Gross Provincial Expenditure	26
	12. Performance of Gross Domestic Product P.E.I. Relative to Canada	27
	13. All Items Consumer Price Index, Charlottetown-Summerside, 1974= 100	28
	14. All Items Consumer Price Index, Canada, 1971= 100	28
	15. Consumer Price Index, Charlottetown-Summerside Annual Averages of Major Components 1974= 100 and Consumer Price Index, Canada Annual Averages of Major Components 1971= 100	29
	16. Public and Private Investment by Type and by Industry	30
	17. Provincial Gross Domestic Product at Factor Costs for Selected Industries and Percentage Analysis	31
	18. Trade and Financial Statistics	32
IV.	Sectoral Development	
	A. Economic Statistics	
	19. Value of Building Permits by Type	32
	20. Building Permits by Type of Dwelling	33
	21. Housing Starts, Completions and Under Construction	33
	22. Subdivisions Approved	34
	23. Farm Cash Receipts	34
	24. Income of Farm Operators from Farming Operations	35
	25. Capital Value of All Farms	35
	26. Index Number of Farm Prices of Agriculture Products	36
	27. Comparison of Selected Census Farm Data	37
	28. Census Farms Classified by Economic Class	38
	29. Census Farms Classified by Size of Farm and Age of Operator	38
	30. Fish Landings and Value	39
	31. P.E.I. Lobster Landing Statistics Comparisons	40
	32. Average Price Received by P.E.I. Fishermen, Selected Years & Species	41
	33. Tourism Statistics	42
	34. Tourism Statistics - 1981 Season	43-44

IV. Sectoral Development

TABLE

35. P.E.I. Restaurant Caterer and Tavern Receipts by Kind of Business by Month - 1981	45
36. Principal Statistics of P.E.I. Manufacturing Establishments - Manufacturing Activity	45
37. Principal Statistics of Manufacturing Industries, Total Activity	46
38. Value Added in Manufacturing Activity by Major Group and Industry, P.E.I.	47
39. Energy Statistics	48
40. Petroleum Consumption	49
41. Transportation Statistics	50-51
42. Motor Vehicle Registration	52
B. Social Statistics	
43. School Enrolment	52
44. Post-Secondary Enrolment	52
45. Vocational Education Enrolment	53
46. Educational Expenditures	54
47. Health and Hospital Care Statistics	54
48. Active Treatment Hospitals	55
49. Physicians' Services	55
50. P.E.I. Department of Health and Social Services Provincial Serviceload Trends	56
51. Crime Statistics	57
52. Persons Held in Prince Edward Island Jails	58
53. Entries under the Supreme Court	58
C. Government	
54. Province of P.E.I. Revenue, Public Accounts	59
55. Province of P.E.I. Expenditures, Public Accounts	60
56. Revenues and Expenditures, by All Levels of Government, National Accounts Basis 1975-1980, P.E.I.	61
57. Federal Government Employment and Payroll in P.E.I.	62
58. Provincial Government Employment	63
59. Local Government Statistics	64

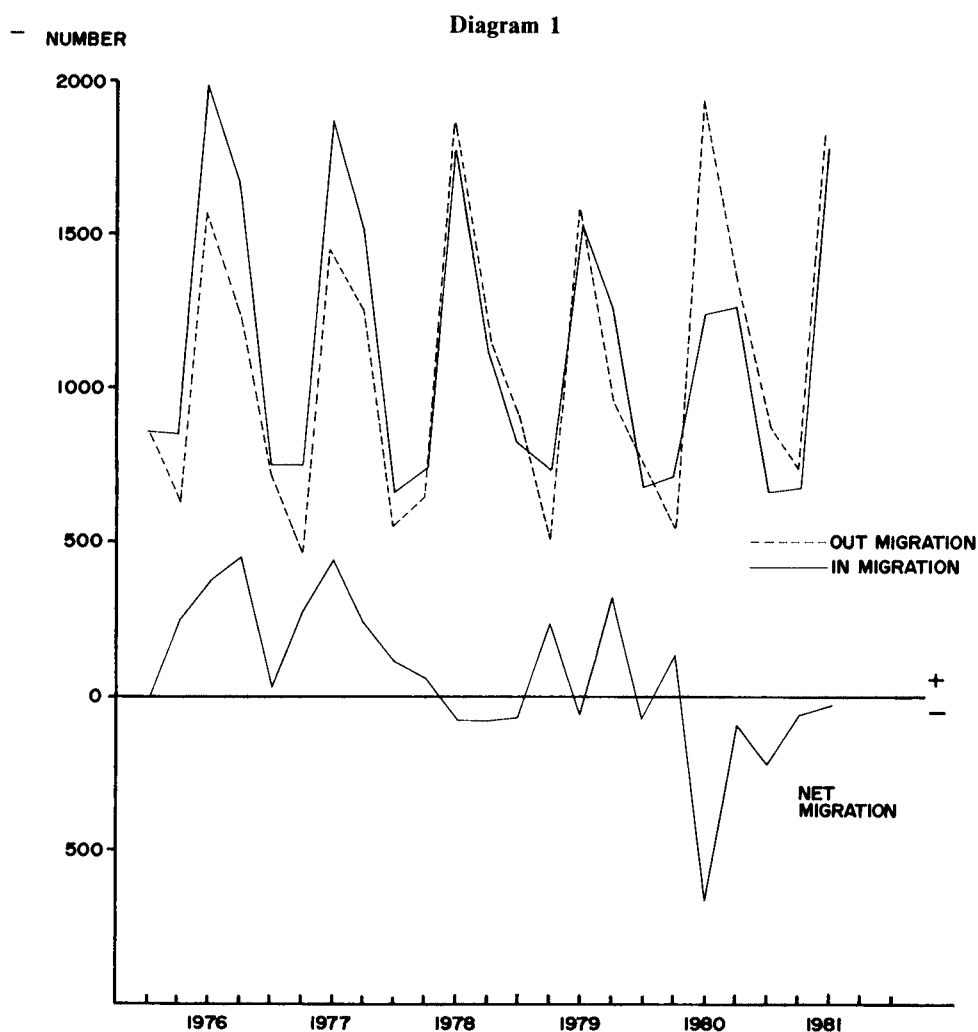
P.E.I. ECONOMIC REVIEW 1980-81

The Economic Review provides a commentary on the P.E.I. economic situation using data available at the time of preparation of the Annual Statistical Review. Statistics for the calendar year 1981 are not uniformly available and some reliance on partial and preliminary data is made.

1. Population, Labour Force, Employment and Unemployment

(a) Population

The 1981 Census final population count for P.E.I., released March 30, 1982 is 122,506. However, the estimated population of P.E.I. at June 1, 1981 had been 124,300; and thus, current population estimates will require revision. The labour force and employment statistics, as well as other population related variables are also subject to significant downward revisions in view of the Census results.



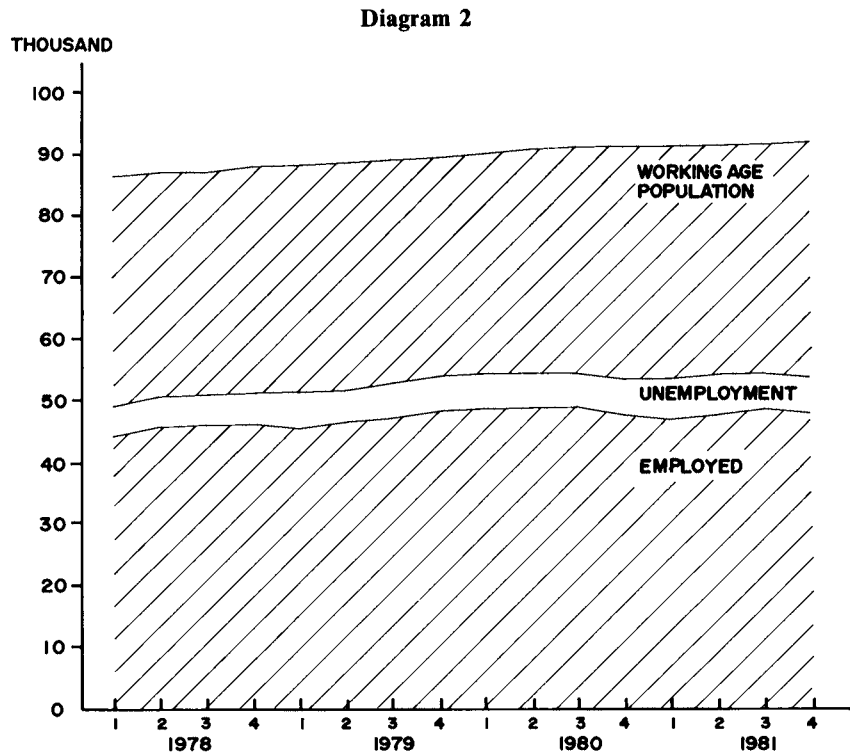
ESTIMATED MIGRATION TO AND FROM P.E.I., 1976-1981, QUARTERLY
SOURCE: STATISTICS CANADA 91-208, 1981 DATA PRELIMINARY.

Given the reliability of birth and death statistics the evidence suggests that the estimates of inter-provincial migration, particularly the flow from the Maritimes to Alberta had been too low. Nevertheless, the estimates of migration had already indicated a swing back to net outmigration from P.E.I., as is shown in Diagram 1. In light of these movements, the population on P.E.I. between June 1, 1980 and June 1, 1981 was estimated to have fallen from 124,400 to 124,300. The most recent population estimates for October 1981 indicate 124,600 on P.E.I., but one must be skeptical of these data in light of the Census results.

(b) Labour Force, Unemployment and Employment

The estimates of population of working age indicate an increase of only 0.8% between 1980 and 1981, averaging 91,000 for the year. The labour force estimates show a gain of only 0.2% on average for 1981, at 54,000 and this weak performance was the combination of the slow growth of the working age population and a decline in the participation rate from 59.5% in 1980 to 59.1% in 1981.

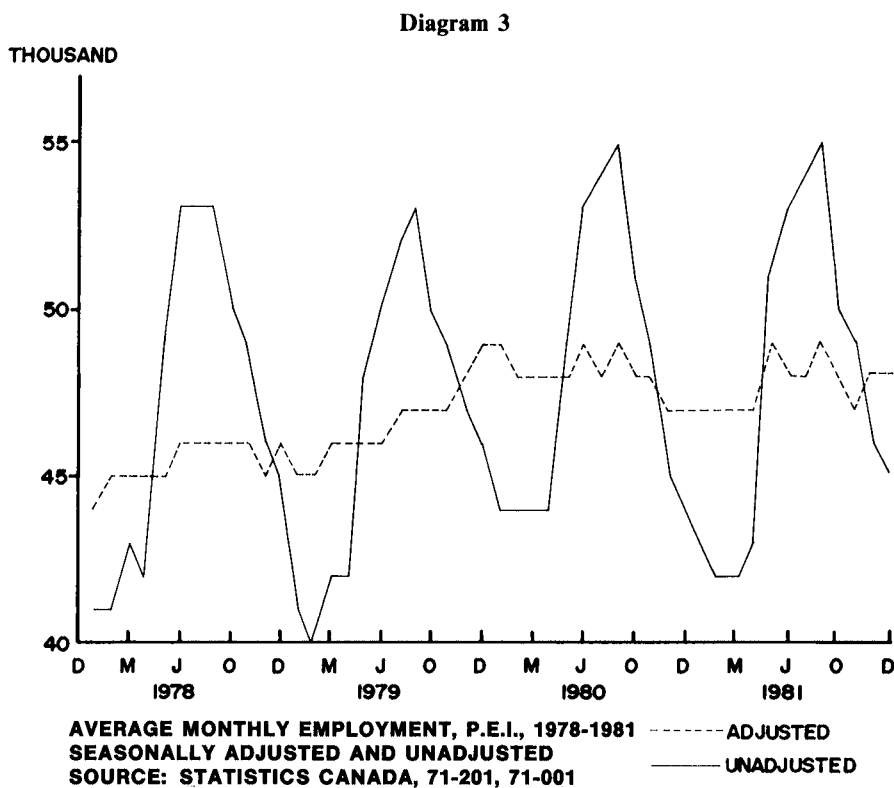
Employment averaged 48,000 in 1981 and the statistics on employment, labour force and the working age population are displayed in Diagram 2. Average monthly employment declined by 0.5% in 1981 compared to 1980, and this not only raised the number unemployed by 5.6%, increased the



EMPLOYMENT, WORKING AGE POPULATION, LABOUR FORCE, UNEMPLOYMENT, P.E.I., QUARTERLY 1978-81
SOURCE: STATISTICS CANADA 71-001

unemployment rate from 10.8% in 1980 to 11.4% in 1981, but undoubtedly contributed to net out-migration and the declining participation rate.

The seasonal adjustments made to the employment statistics mask the actual month by month changes and Diagram 3 shows both the seasonally adjusted data alongside the actual numbers. The extraordinary seasonality of the P.E.I. economy is readily apparent, and one can identify a downward swing in employment from August 1980 to January 1981 of 13,000, which is 24% of the labour force. The diagram also suggests that the decline in employment in 1981 halted in March making a small comeback by mid-summer.

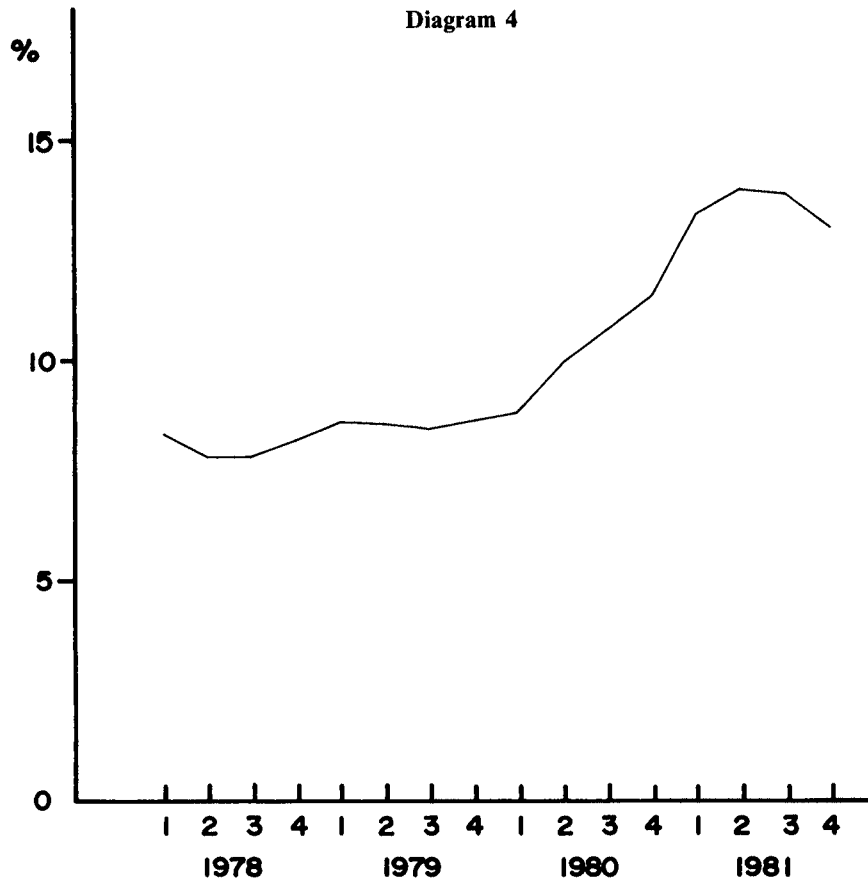


2. Inflation and Personal Income

(a) Consumer Prices

The average annual increase in consumer prices for Charlottetown-Summerside was 13.5% in 1981 which represents a significant climb in the inflation rate from 8.6% in 1979 and 10.4% in 1980. Nevertheless, as can be seen in Diagram 4, the upsurge in prices peaked in mid 1981 at which time the annual rate was running at 14.3% and it had come down to 12.6% by December. Particularly disturbing for P.E.I. was the fact that the 1981 experience was significantly worse than for Canada, where the annual rate was 12.5%, with a peak of 13% in July. The major factor influencing the general price situation in 1981 was energy costs, and the annual increase in the energy components of the Consumer Price Index for Charlottetown-Summerside measured 35.1%, compared to 30.1% for Canada. The relative easing of inflation in the fourth quarter of 1981 is mainly

attributable to a slowdown in increases in food prices, particularly for meats, eggs, sugar, coffee, and tea. Annual increases in the food components were running at 7.9% in the fourth quarter of 1981.



**CONSUMER PRICE INFLATION, CHARLOTTETOWN-SUMMERSIDE,
QUARTERLY, 1978-1981 ANNUAL RATES
SOURCE: STATISTICS CANADA 62-001**

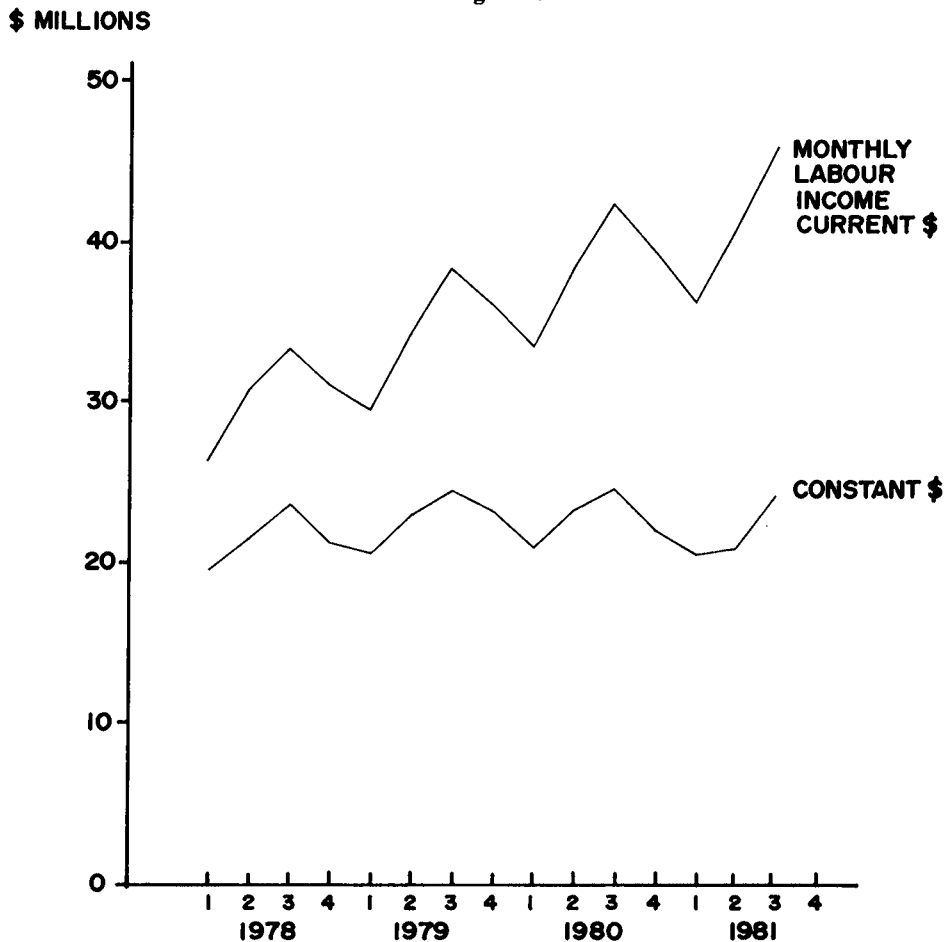
(b) Personal Income

Personal income of P.E.I. for 1980 is estimated at \$874 million, an increase of 14.2% over 1979. This compares with a 12.2% increase for Canada, and personal income per capita in P.E.I. increased from \$6,220 in 1979 to \$7,048 in 1980 or 71.1% of the Canadian level. The major reason for this significant increase in 1980 stems from the unusual jump in the net income of farm operators that year which rose from \$36 million in 1979 to \$63 million in 1980. This leap was almost entirely due to the unusually high value of the 1980 potato harvest, which will be discussed later.

In addition, personal income received as interest, dividends, and investment income increased markedly during 1980, by 15.9%, as a consequence of the soaring interest rates which have characterized the past two years.

Complete data on personal income are not yet available for 1981. Its largest component is Wages, Salaries and Supplementary Labour Income, which increased at a rate of 8.8% in the first nine months of 1981. The growth pattern of labour income over the last three years is displayed in Diagram 5. The weak employment picture in 1981 and the high rate of inflation resulted in a deterioration in real earning power of wage and salary earners. The Diagram also shows that the constant dollar value of earnings of labour has been static since 1978. It grew by 3.6% in 1979, 0.5% in 1980, and then declined by 4.1% in the first three quarters of 1981. In combination with a likely reduction in net farm income in 1981, as measured for personal income purposes, it appears that total personal income increased at a significantly slower rate in 1981 than 1980. This means that income growth for P.E.I. in 1981 has been significantly below the pace of increase in consumer prices of 13.5% and the consequent reduction in real spending power and the heavy burden of high interest rates, particularly for those renewing mortgages, has made 1981 a difficult year for the household sector.

Diagram 5



LABOUR INCOME, P.E.I. QUARTERLY
 AVE. MONTHLY, 1978 - 3 Q 1981
 CONSTANT DOLLAR ESTIMATE, USING
 CONSUMER PRICE INDEX AS DEFLATOR.
 SOURCE: STATISTICS CANADA, 72-005

3. Gross Provincial Expenditures and Gross Domestic Product

(a) Gross Provincial Expenditures

Gross Provincial Expenditures are the provincial equivalent of Gross National Expenditures, and consist of the total consumer, business investment and government spending taking place in the province in a given year. Including imports, the total value of these expenditures for P.E.I. was \$1.222 billion in 1980, of which 55.6% consisted of consumer expenditures, 28.4% was government spending on goods and services, 5.0% government investment spending, and 10.0% was private investment spending.

The data for 1980 confirms the distinct slowdown in the rate of increase of expenditures in that year witnessed by declining housing construction and falling retail activity. Total Final Expenditures increased by 15.1% in 1977, 18.3% in 1978, 9.4% in 1979 and only 6.0% in 1980. Bearing in mind that inflation reached 10.4% in 1980, total expenditures that year would have had a negative impact on real aggregate economic activity on P.E.I. Figures for 1981 are not yet available but it appears that this pattern continued in 1981.

Total retail trade increased by only 8.7% in 1981 in the face of inflation of 13.5%. The number of new motor vehicles sold declined by 8% in the first eleven months of 1981, continuing the decline of 1980. Housing starts, after falling by 55% in 1980, fell a further 57% in 1981. Residential housing construction in 1981 was approximately 80% below its normal pace of about 1,000 units per year.

Tourist visitation on P.E.I. increased marginally in 1981 and total tourist expenditures were estimated at \$49.4 million. This appears to have been a factor contributing to a degree of economic stability for the Island economy during the summer months, in otherwise difficult times. Vehicles from Ontario and Quebec were down by 9.2% and 3.4% respectively in 1981, but there was a major increase in traffic from the USA.

(b) Gross Domestic Product

The value of production of the Island is estimated to have been \$786.8 million in 1980, which represented 0.26% of the Canadian total. Growth of P.E.I. Gross Domestic Product fell behind the Canadian rate both in 1979 and 1980, and partial data point to a continuation of this pattern in 1981. P.E.I.'s GDP increased by 12.1% in 1979 and 7.2% in 1980, compared to 13.7% and 10.6% for the nation.

These figures are in current dollars, and estimates of production in constant dollars by the Conference Board of Canada indicate a decline in 1980 of 2%, followed by a further decline in 1981 of 0.6%. Canadian GNP in constant dollars showed 0% growth in 1980 and 3% growth in 1981.

Growth of incomes on P.E.I. in 1980 was significantly greater than growth of GDP because of the large increase in oil import subsidies that year, which are subtracted from the measure GDP.

	Growth of GDP		Growth of Net Income		Oil Subsidy P.E.I. \$ Million
	P.E.I. %	Canada %	P.E.I. %	Canada %	
1977	7.2	9.3	5.9	9.0	19.8
1978	17.0	10.3	17.6	11.4	13.3
1979	12.1	13.7	14.1	15.3	24.0
1980	7.2	10.6	12.7	11.1	68.7

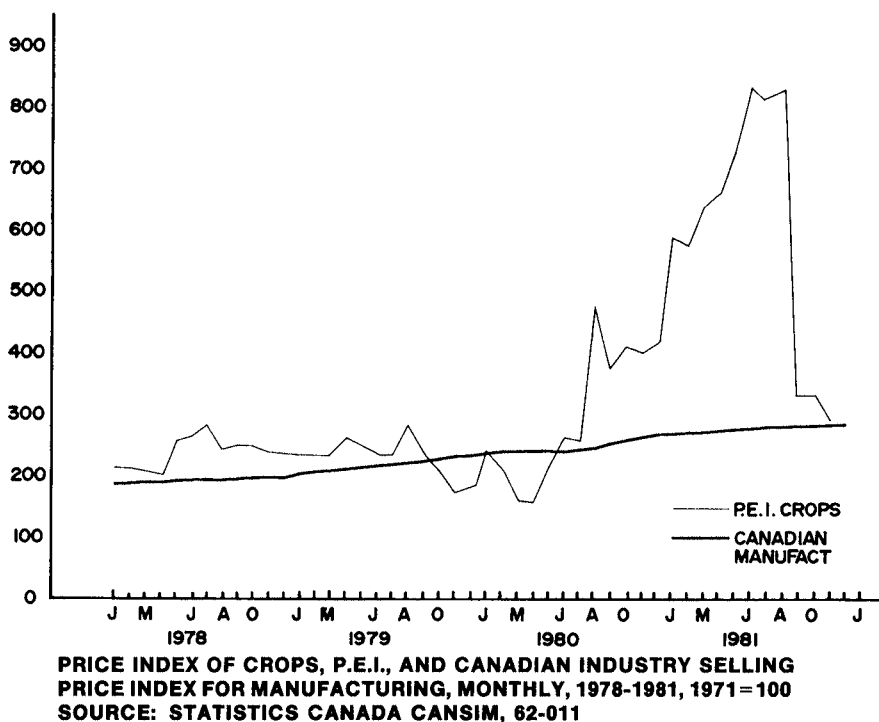
The table on Page 12 indicates that provincial net income increased by 12.7% in 1980, ahead of Canada's 11.1% whereas P.E.I.'s GDP lagged Canada's. The explanation is in the oil subsidy which jumped from \$24 million in 1979 to \$68.7 million in 1980, thus pulling down growth of GDP. The cushion provided by this subsidy was sharply reduced in 1981, as Canadian oil prices moved rapidly towards world levels.

4. Sector Detail

(a) Agriculture

Farm cash receipts for 1981 valued approximately \$190 million, which was 33% higher than 1980. These figures are dominated by the sale of potatoes, which accounted for 41.7% of the value of all sales. The growth in value of sales of potatoes in 1981 was entirely attributable to the high prices that were obtained for the 1980 crop. Market conditions altered significantly in the fall of 1981 after the 1981 harvest. Diagram 6 displays statistics on the monthly crop price index for P.E.I. which demonstrates clearly the extraordinary level of potato prices in 1981 relative to general industry prices in Canada, and their drop in September.

Diagram 6



The value of the 1980 potato harvest exceeded all previous records, and is estimated at \$95,236,000 which was over three times that of the 1979 harvest, and compares to \$51.6 million for 175, the previous record. The 1981 potato harvest is estimated to have been 15,180,000 cwt., which is slightly less than the record 1979 crop in terms of volume, at 15,195,360 cwt.

An increasingly important component of P.E.I. agriculture is dairying, and dairy products, at \$26.7 million, formed the second largest farm product in 1981, with the value of sales increasing by 22.4%.

The value of hog sales improved in 1981 by 14.1%, although the volume of hogs slaughtered was 2.2% below the 1980 level. The beef sector had a disappointing year, with the overall value of sales 21.4% below that of 1980, accompanying both a marked reduction in numbers slaughtered and lower prices. The above farm products account for 80% of total farm sales on P.E.I.

Employment in agriculture continued to advance during 1981, in light of generally favourable conditions, averaging 6,000 per month.

(b) Fishing

Fish landings valued \$31.9 million in 1981, a 19% gain over 1980, largely because of a significant improvement in lobster prices. Lobsters formed 58.5% of the value of the fish catch on P.E.I. in 1981. In terms of volumes, major gains were made in the pelagic and estuarial species which were up by 14.7%, and groundfish by 6.6%, whereas the lobster landings improved by only 1.2%

(c) Manufacturing

Approximately 80% of P.E.I. manufacturing consists of Food and Beverages, which in turn is dominated by the processing of farm and fish products. Available statistics show that this sector enjoyed extremely high growth in 1978 and 1979, the value of production increasing by 80% over these two years. By 1979, Gross Domestic Product in manufacturing was \$66.8 million, compared to \$67.6 million in agriculture.

This growth slowed in 1980 and the sector appears to have stopped growing in 1981. Nonetheless, the dairy products component enjoyed sustained growth throughout the period, and in 1981 the fish processing plants recovered from a significant decline in fish markets in 1980. Other components of manufacturing appear to have reduced activity in light of generally poor economic conditions in 1981, and total employment in manufacturing declined by 8.7% in 1981, averaging 4,000, according to the Labour Force Survey.

(d) Construction

The construction industry employed approximately 3,000 workers in 1981. Activity fell significantly in 1981 as was evidenced by the number of residential building permits declining by 35.5% in 1981, and total housing starts which fell by 57% following the 55% fall of 1980. Total non-residential building permits issued increased from \$21 million to \$22 million which countered these declines to a small degree. The Gross Domestic Product for construction valued \$54.1 million in 1979, making it P.E.I.'s number three goods-producing industry that year, after agriculture and manufacturing.

(e) Transportation, Utilities and Other Services

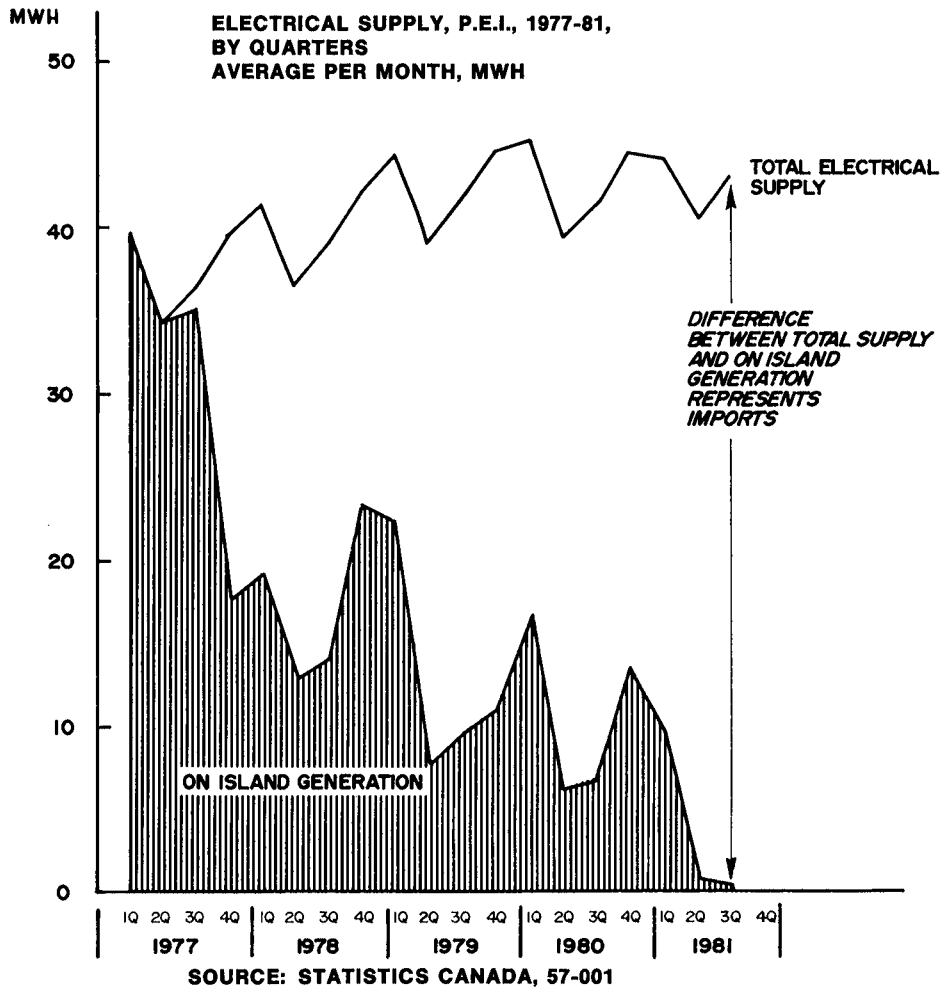
Passenger traffic to and from P.E.I. declined slightly between 1980 and 1981, both by ferry and by air, with ferry passenger traffic down by 0.9% and air traffic down by 1.7%. Truck and trailer traffic also declined slightly, but rail freight movements increased by 4.8%.

The generation of power locally was reduced substantially in view of the switch to imported power. Despite substantial increases in the price of electricity during 1981 (Oct. 1980 - Oct. 1981 by 37.4%), the total demand for electricity increased by 0.6%. Diagram 7 displays the supply of electricity to P.E.I.

The services industry group consists of a wide variety of economic activities including retail trade, restaurants, accommodations, personal services, recreation, finance, insurance, as well as non-

commercial activities such as schools, colleges, the university, hospitals, health and religious organizations. Employment in this range of activities numbered approximately 23,000 in 1981 or 48% of all employment on P.E.I.

Diagram 7



Employment data indicate that this large sector enjoyed no growth in total in 1981. Although statistics on services are limited, it appears that, whereas retail trade activity declined overall in volume in 1981 and the non-commercial services group was essentially static, there were continuing modest gains in the commercial services component. The number of employees in commercial services increased from 4,300 to 4,460 in the first ten months of 1981. There appears to be a long-term trend towards increased consumer spending on services, relative to purchases of goods; whereas in 1974, 33% of consumer spending was on services, 67% was on goods. By 1980 this had become 38% on services and 62% on goods.

(f) Government Sector

Employment in the combined federal, provincial and local administration group increased slightly in 1981, averaging 4,600 for the year. At year end federal employment was 194 higher than at December 1980, reflecting the movement of functions within Veterans Affairs from Ottawa to Charlottetown. Provincial employment declined by 156 positions, largely as a consequence of the loss of Development Plan responsibilities.

The establishment of Veterans Affairs on P.E.I. made a significant positive contribution to the local economy in 1981, both from the start of construction of the headquarters building, and the movement of officers and jobs to P.E.I. By the end of 1981, 303 positions were established on P.E.I. of which 164 came in 1981. Islanders presently fill 116 of the 303 positions.

Total government spending on P.E.I. in 1980 is estimated at \$716 million, of which \$537 million was from federal sources. Total government revenues in that year valued \$279 million, leaving a deficit of \$437 million.

TABLE 1
POPULATION AND VITAL STATISTICS
PRINCE EDWARD ISLAND

Year	Population as of June 1st (^{'000})	Population as of January 1st (^{'000})	Births¹	Deaths¹	Net Migration³	Marriages
1974	115.2	114.6	1,939	1,088	1,149	990
1975	117.1	116.6	1,928	1,057	529	936
1976	118.2	118.0	1,941	1,018	677	971
1977	120.2	119.6	1,870	1,080	1,210	950
1978	122.1	121.6	1,985	994	9	939
1979	123.0	122.6	1,934	1,022	388	893
1980	124.4	123.9	1,970	1,000	-770	820
1981	124.3	124.1	1,490 ²	740 ²	-250 ²	610 ²

1 Figures are total for the given years.

2 Figures are for the first nine months of 1981 (January - September inclusive).

3 Calculated using population as of January 1, birth and death figures.

Source: Statistics Canada 11-003, 91-001, 91-201.

Note: The above population estimates will be revised in accordance with the 1981 Census. The Final Population Count for P.E.I. from the 1981 Census was 122,506.

TABLE 2
COMPONENTS OF INTERNATIONAL AND INTERPROVINCIAL MIGRATION
PRINCE EDWARD ISLAND 1963-64 — 1980-81

<u>Year</u>	<u>INTERNATIONAL MIGRATION</u>			<u>INTERPROVINCIAL MIGRATION</u>			
	<u>Immigration</u>	<u>Emigration</u>	<u>Net Migration</u>	<u>In Migration</u>	<u>Out Migration</u>	<u>Net Migration</u>	<u>Total Net Migration</u>
1963-64	69	490	-421	3,667	4,280	-612	-1,033
1964-65	89	534	-445	3,010	4,612	-1,601	-2,046
1965-66	162	533	-371	3,741	4,749	-1,008	-1,379
1966-67	129	525	-396	3,869	4,545	-676	-1,072
1967-68	152	565	-413	3,754	3,865	-111	-524
1968-69	187	491	-304	3,930	4,526	-596	-900
1969-70	167	459	-292	3,207	4,809	-1,602	-1,894
1970-71	176	350	-174	4,023	3,801	222	48
1971-72	181	73	108	4,299	4,009	290	398
1972-73	171	69	102	4,332	3,409	923	1,025
1973-74	354	92	262	4,756	4,254	502	764
1974-75	299	87	212	5,428	4,037	1,390	1,602
1975-76	204	72	132	4,392	3,742	649	781
1976-77	225	201	24	4,965	3,938	1,027	1,051
1977-78	178	165	13	4,707	3,728	979	992
1978-79	168	204	-36	4,251	4,367	-116	-152
1979-80	301 p	200p	101	3,879 f	3,505 f	374 f	475 p
1980-81	149 p	200 p	-51 p	3,857 f	4,795 f	-938 f	-989 p

p preliminary f final

Note: Total net migration figures from this source do not agree with Table 1 because of differences in estimating techniques.

Source: Statistics Canada 91-208

TABLE 3
IN-MIGRATION TO PRINCE EDWARD ISLAND BY PROVINCE OF ORIGIN
1975-76 — 1980-81

<u>Province of Origin</u>	<u>1975-76</u>	<u>1976-77</u>	<u>1977-78</u>	<u>1978-79</u>	<u>1979-80</u>	<u>1980-81</u>
Newfoundland	185	160	120	185	253	132
Nova Scotia	1,118	1,008	1,179	1,038	760	940
New Brunswick	599	601	633	603	615	573
Quebec	284	500	398	240	219	134
Ontario	1,632	1,938	1,560	1,461	1,303	1,374
Manitoba	139	169	124	88	97	60
Saskatchewan	59	49	116	111	26	64
Alberta	223	289	406	294	349	436
British Columbia	116	225	165	202	250	91
Yukon and North West Territories	<u>36</u>	<u>26</u>	<u>6</u>	<u>29</u>	<u>7</u>	<u>53</u>
TOTAL IN-MIGRATION	4,392	4,965	4,707	4,251	3,879	3,857

Source: Statistics Canada 91-208

TABLE 4
OUT-MIGRATION FROM PRINCE EDWARD ISLAND BY PROVINCE OF DESTINATION
1975-76 — 1980-81

<u>Province of Destination</u>	<u>1975-76</u>	<u>1976-77</u>	<u>1977-78</u>	<u>1978-79</u>	<u>1979-80</u>	<u>1980-81</u>
Newfoundland	120	208	224	158	135	105
Nova Scotia	986	865	992	1,258	850	1,199
New Brunswick	607	735	476	614	618	659
Quebec	177	137	115	174	96	157
Ontario	1,030	1,147	1,089	1,156	889	1,181
Manitoba	139	131	168	168	73	140
Saskatchewan	73	75	48	91	61	94
Alberta	417	442	431	439	437	882
British Columbia	168	171	164	276	292	345
Yukon and North West Territories	<u>25</u>	<u>27</u>	<u>21</u>	<u>33</u>	<u>54</u>	<u>33</u>
TOTAL OUT-MIGRATION	3,742	3,938	3,728	4,367	3,505	4,795

Source: Statistics Canada 91-208

TABLE 5
POPULATION BY SEX AND AGE GROUP (AS OF JUNE 1)
P.E.I. POPULATION ('000)

<u>Age Group</u>	1978			1979			1980		
	Male	Female	Total	Male	Female	Total	Male	Female	Total
Total	61.3	60.7	122.1	61.8	61.2	123.0	62.5	61.8	124.4
0 - 4	5.0	4.6	9.6	5.0	4.7	9.7	5.0	4.8	9.8
5 - 9	5.5	5.0	10.5	5.5	4.9	10.4	5.4	4.8	10.2
10 - 14	6.3	6.0	12.3	6.1	5.7	11.8	5.8	5.6	11.4
15 - 19	6.8	6.5	13.2	6.8	6.5	13.3	6.9	6.4	13.3
20 - 24	5.6	5.4	11.0	5.7	5.4	11.2	5.9	5.7	11.5
25 - 29	4.8	4.7	9.5	4.8	4.7	9.5	4.8	4.7	9.6
30 - 34	4.4	4.1	8.5	4.6	4.4	9.1	5.0	4.7	9.7
35 - 39	3.3	3.1	6.4	3.4	3.3	6.7	3.5	3.4	6.9
40 - 44	3.0	2.9	5.8	3.0	2.9	5.8	3.1	3.0	6.1
45 - 49	2.8	2.7	5.5	2.9	2.7	5.6	2.9	2.7	5.6
50 - 54	2.6	2.7	5.3	2.6	2.7	5.3	2.7	2.7	5.4
55 - 59	2.6	2.8	5.4	2.6	2.7	5.3	2.6	2.7	5.3
60 - 64	2.4	2.6	5.0	2.5	2.6	5.0	2.5	2.7	5.1
65 - 69	2.2	2.3	4.5	2.3	2.4	4.7	2.3	2.4	4.8
70 - 74	1.6	1.7	3.4	1.6	1.8	3.5	1.6	1.9	3.5
75 - 79	1.2	1.5	2.7	1.2	1.5	2.7	1.2	1.5	2.7
80 - 84	0.7	1.1	1.9	0.8	1.1	1.9	0.8	1.2	2.0
85 - 89	0.4	0.6	1.0	0.4	0.6	1.0	0.3	0.7	1.0
90 +	0.2	0.3	0.5	0.2	0.4	0.5	0.2	0.3	0.5

Note: Each population figure has been rounded independently to the nearest hundred, totals do not necessarily equal the sum of individual rounded figures in distribution.

Source: Statistics Canada 91-202

TABLE 6
WORKING AGE POPULATION, LABOUR FORCE,
EMPLOYMENT AND UNEMPLOYMENT

Year	Population ('000)	Population 15+ ('000)	Labour Force ('000)	Participation Rate (%)	Employed ('000)	Unemployed ('000)	Unemployment Rate (%)
1975	117.1	81	46	56.5	42	4	8.0
1976	118.2	83	47	56.7	42	4	9.6
1977	120.2	85	48	57.0	44	5	9.9
1978	122.1	87	50	57.8	45	5	9.9
1979	123.0	89	53	59.3	47	6	11.3
1980	124.4	90	54	59.5	48	6	10.8
1981	124.3	91	54	59.1	48	6	11.4

Source: Statistics Canada 91-201, 71-201

TABLE 7

SEASONALLY ADJUSTED LABOUR FORCE PARTICIPATION
EMPLOYMENT, UNEMPLOYMENT, MONTHLY

Month & Year	Labour Force ('000)	Employed ('000)	Unem- ployed ¹ ('000)	Unem- ployment Rate ¹ (%)	Month & Year	Labour Force ('000)	Employed ('000)	Unem- ployed ¹ ('000)	Unem- ployment Rate ¹ (%)
1978					1979				
Jan.	49	44	5	10.2	Jan.	52	46	6	11.1
Feb.	49	45	4	8.3	Feb.	51	45	6	11.2
March	50	45	5	9.5	March	52	46	6	11.9
April	50	45	5	10.7	April	54	47	7	12.5
May	50	45	5	10.0	May	52	46	6	11.3
June	51	46	5	9.7	June	51	45	6	12.3
July	51	46	5	9.5	July	53	47	6	10.8
Aug.	51	46	5	9.5	Aug.	53	47	6	11.4
Sept.	51	46	5	10.5	Sept.	53	47	6	10.6
Oct.	51	46	5	9.9	Oct.	53	47	6	11.1
Nov.	50	45	5	10.3	Nov.	54	48	6	11.0
Dec.	52	46	6	11.0	Dec.	55	49	6	10.3
1980					1981				
Jan.	55	49	6	10.5	Jan.	53	47	6	11.1
Feb.	54	49	6	10.4	Feb.	53	47	6	10.8
March	53	48	5	10.2	March	54	47	7	12.6
April	54	48	6	10.7	April	54	48	6	10.9
May	54	48	6	10.9	May	55	49	6	10.5
June	54	48	6	10.5	June	54	48	6	10.7
July	54	48	6	10.7	July	54	48	6	11.3
Aug.	55	49	6	10.8	Aug.	54	48	6	10.7
Sept.	54	48	6	10.9	Sept.	55	48	7	12.0
Oct.	54	48	6	11.1	Oct.	54	48	6	11.5
Nov.	53	47	6	11.3	Nov.	55	48	7	12.1
Dec.	53	47	6	11.1	Dec.	54	48	6	11.8

1 Unemployment figures and rates for P.E.I. have a high sampling error resulting from the small sample size.

Source: Statistics Canada 71-201 – Historical Labour Force Statistics, seasonally adjusted figures

TABLE 8
EMPLOYMENT INDEX, AVERAGE WEEKLY
WAGES AND SALARIES

Year	Employment Index ¹ Industrial Composite 1961=100	Average Weekly Wages and Salaries (\$)	Total Wages and Salaries (\$ Million)
1974	152.0	126.91	199.3
1975	149.9	149.98	243.5
1976	148.1	170.98	280.0
1977	151.6	187.73	310.0
1978	153.8	196.72	338.0
1979	164.4	209.77	380.9
1980	166.1	230.03	422.6
1981 January	148.5	241.38	33.6
February	148.6	243.12	33.6
March	144.4	240.05	33.6
April	151.9	244.12	34.6
May	163.8	241.07	37.8
June	174.8	245.28	40.2
July	188.1	252.43	43.0
August	186.8	251.65	43.7 p
September	176.3 p	251.82 p	42.6 p
October	165.4 p	257.06 p	41.2 f
November	158.0 f	259.80 f	
December			

p preliminary f forecast

1 unadjusted for seasonal variation

Source: Statistics Canada 11-003, 72-002, 72-005

TABLE 9
ESTIMATES OF EMPLOYEES BY NON-AGRICULTURAL INDUSTRIES
FOR PRINCE EDWARD ISLAND, 1975-1981
('000)

Industry	1975	1976	1977	1978	1979	1980	1981¹
Forestry	0.1	0.1	0.1	0.1	0.1	0.1	0.1
Mining including Milling	—	—	—	—	—	—	—
Manufacturing	2.8	2.8	2.7	3.1	3.2	3.5	3.2
Construction	2.3	2.2	2.3	2.4	2.5	2.4	2.3
Transportation, Communi- cation & Other Utilities	3.0	3.2	3.0	2.9	3.1	3.1	3.1
Trade	5.4	6.1	5.9	6.1	6.6	6.1	6.0
Finance, Insurance & Real Estate	0.9	1.0	1.2	1.2	1.4	1.4	1.4
Community Business & Personal Services	9.8	9.6	10.2	10.3	10.9	11.2	12.0
Commercial Services ²	2.8	2.9	3.5	3.5	4.2	4.2	4.5
Non-commercial Services ³	7.0	6.7	6.6	6.8	6.7	7.0	7.1
Public Administration & Defence	3.7	3.9	3.8	3.9	3.7	4.0	4.1
Total Non-Agricultural Industries	28.0	28.9	29.2	30.0	31.5	31.8	32.6

1 1981 figures were averaged using January-October figures inclusive, unadjusted for seasonal variations.

2 Commercial Services include employment in health services (except hospitals), motion picture and recreation services, services to business management, personal services (except private households), and miscellaneous services.

3 Non-commercial services include employment in education and related services, hospitals, welfare organizations, religious organizations and private households.

Note: The employee concept excludes owners or partners of incorporated businesses and professional practices, the self-employed, unpaid family workers, persons doing non-remunerative work, pensioners, home workers, members of the elected or appointed bodies, military personnel and persons providing services to an establishment on a contract basis.

Source: Statistics Canada 72-008.

TABLE 10
PERSONAL INCOME, P.E.I. 1975-1980
(\$ MILLIONS)

	1975	1976	1977	1978	1979	1980
Wages, Salaries & Supplementary Labour Income	261.0	300.0	333.0	366.0	412.0	460.0
Military Pay & Allowances	20.0	20.0	22.0	22.0	21.0	21.0
Net Income of Farm Operators	38.0	28.0	12.0	36.0	36.0	63.0
Net Income of Unincorporated Business	34.0	36.0	42.0	49.0	53.0	57.0
Interest, Dividends and Miscellaneous Investment Income	31.0	36.0	40.0	51.0	63.0	73.0
Total Earned Income	384.0	420.0	449.0	524.0	585.0	674.0
Government Transfers	106.0	122.0	144.0	167.0	175.0	194.0
Other Transfers	3.0	5.0	5.0	10.0	5.0	6.0
Total Personal Income	493.0	547.0	598.0	701.0	765.0	874.0
Personal Disposable Income	423.0	464.0	507.0	604.0	653.0	745.0
Per Capita Personal Income \$	4,214	4,636	4,983	5,746	6,220	7,048
Per Capita Personal Income Canada \$	6,001	6,756	7,365	8,096	8,927	9,913
P.E.I. as a % of Canada	70.2	68.6	67.7	71.0	69.7	71.1
Earned Income as % of Total Personal Income	77.9	76.8	75.1	74.8	76.5	77.1

Source: Statistics Canada, 13-201, System of National Accounts

TABLE 11
GROSS PROVINCIAL EXPENDITURE (\$ MILLION)
1975-1980

	1975	1976	1977	1978	1979	1980
Personal Expenditures on Consumer Goods and Services	385.4	443.2	500.9	573.8	632.6	681.7
Personal Expenditure on Consumer Goods	253.4	287.2	321.7	372.3	399.3	423.2
Personal Expenditure on Consumer Services	132.0	156.0	179.2	201.5	233.3	258.5
Government Current Expenditure of Goods and Services	187.1	232.4	259.4	286.2	308.6	346.4
Gross Fixed Capital Formation	120.4	110.3	130.9	173.0	200.2	183.0
Government	36.5	23.5	30.6	48.5	59.3	61.3
Residential Construction	0.1	0	0.1	0.1	0.1	0.2
Non-Residential Construction	30.7	20.3	27.7	44.8	52.8	56.9
Machinery & Equipment	5.7	3.2	2.8	3.6	6.4	4.2
Business	83.9	86.8	100.3	124.5	140.9	121.7
Residential Construction	38.0	35.3	37.0	57.3	61.1	34.5
Non-Residential Construction	17.9	18.1	22.6	28.2	31.2	38.0
Machinery & Equipment	28.0	33.4	40.7	39.0	48.6	49.2
Value of Physical Change in Inventories	16.5	-11.2	-9.6	21.2	11.5	10.6
Government	0.3	0.3	0.4	0.5	0.6	0.7
Business	16.2	-11.5	-10.0	20.7	10.9	9.9
Non-Farm	2.2	-2.5	-0.9	7.7	7.7	-9.0
Farm: Grain in Commercial Channels	14.0	-9.0	-9.1	13.0	3.2	18.9
Total Final Expenditures	709.4	774.7	891.4	1,054.2	1,152.9	1,221.7
Net Exports Plus Residual Error of Estimate	-254.6	-252.9	-321.7	-399.5	-419.0	-434.9
Gross Provincial Expenditure at Market Price	454.8	521.8	559.7	654.7	733.9	786.8

Source: Statistics Canada, Provincial Economic Accounts, Experimental Data 13-213

TABLE 12
PERFORMANCE OF GROSS DOMESTIC PRODUCT
P.E.I. RELATIVE TO CANADA

Year	P.E.I. Gross Domestic Product at Market Prices		Canadian GNP % Change	Canadian GNE in Constant \$ % Change	P.E.I. Domestic Product, Constant \$ % Change *
	\$Million	% Change			
1973	366.6	27.1	17.4	7.5	14.5
1974	381.6	4.1	19.4	3.6	2.6
1975	454.8	19.2	12.1	1.2	0.6
1976	521.8	14.7	15.5	5.5	1.2
1977	559.5	7.2	9.3	2.1	3.8
1978	654.7	17.0	10.3	3.7	6.2
1979	733.9	12.1	13.7	3.0	2.3
1980	786.8	7.2	10.6	0.0	-2.0
1981	n/a	n/a	13.3	3.0	-0.6

*Conference Board of Canada

Source: Statistics Canada 13-001, 13-201, 13-213

TABLE 13

**ALL ITEMS, CONSUMER PRICE INDEX
CHARLOTTETOWN — SUMMERSIDE
1974=100**

	1976	1977	1978	1979	1980	1981
January	116.8	124.0	134.3	145.9	158.4	179.4
February	117.7	124.8	135.0	146.8	159.7	180.6
March	118.2	126.4	136.6	148.7	162.9	185.0
April	118.2	127.3	137.3	149.5	163.5	186.4
May	118.7	128.6	138.6	150.6	165.8	188.5
June	119.5	129.6	139.9	151.4	167.4	191.1
July	120.3	130.8	141.6	152.8	168.7	192.9
August	120.9	131.8	142.2	153.5	170.7	193.5
September	121.5	132.1	142.1	155.0	171.9	195.4
October	122.3	133.0	143.8	156.3	173.6	196.8
November	122.8	133.6	144.5	157.0	175.5	198.6
December	123.1	134.2	145.0	157.9	176.9	199.2
Annual Averages	120.0	129.7	140.1	152.1	167.9	190.6
% Change	7.7	8.1	8.0	8.6	10.4	13.5

Source: Statistics Canada 62-001

TABLE 14

**ALL ITEMS¹, CONSUMER PRICE INDEX
CANADA 1971=100**

	1976	1977	1978	1979	1980	1981
January	145.1	154.0	167.8	182.7	200.1	224.1
February	145.6	155.4	168.9	184.4	201.8	226.4
March	146.2	157.0	170.8	186.6	204.0	229.4
April	146.8	157.9	171.2	187.9	205.2	231.1
May	148.0	159.2	173.6	189.7	207.6	233.2
June	148.7	160.3	175.1	190.6	209.9	236.8
July	149.3	161.8	177.7	192.1	211.5	238.9
August	150.0	162.5	177.8	192.8	213.5	240.6
September	150.7	163.4	177.5	194.5	215.4	242.4
October	151.7	165.0	179.3	195.9	217.3	244.8
November	152.2	166.1	180.8	197.8	220.0	246.9
December	152.7	167.2	181.3	199.0	221.3	248.0
Annual Averages	148.9	160.8	175.2	191.2	210.6	236.9
% Change	7.5	8.0	9.0	9.1	10.1	12.5

1 As of October 1978, the index is based on 1974 expenditure weights.

Source: Statistics Canada 62-010

TABLE 15

**CONSUMER PRICE INDEX CHARLOTTETOWN - SUMMERSIDE
ANNUAL AVERAGES OF MAJOR COMPONENTS 1974=100**

Year	Food	Housing	Clothing	Transportation	Health & Personal Care	Recreation, Reading and Education	Tobacco & Alcohol
1975	112.5	110.1	104.7	114.5	113.4	109.4	117.1
1976	118.1	122.3	110.2	124.8	120.2	115.8	123.7
1977	127.9	135.9	117.1	131.8	127.4	121.6	126.5
1978	144.8	145.8	122.6	138.3	139.2	125.1	130.8
1979	162.4	156.1	133.4	149.4	149.6	133.6	138.6
1980	179.0	169.3	149.2	170.6	162.7	146.0	157.5
1981	199.4	193.6	160.7	204.5	183.1	160.4	186.6

Source: Statistics Canada 62-001

**CONSUMER PRICE INDEX CANADA
ANNUAL AVERAGES OF MAJOR COMPONENTS 1971=100**

Year	Food	Housing	Clothing	Transportation	Health & Personal Care	Recreation, Reading and Education	Tobacco & Alcohol
1975	161.9	133.2	125.1	129.4	133.0	128.5	125.3
1976	166.2	148.0	132.0	143.3	144.3	136.2	134.0
1977	180.1	161.9	141.0	153.3	155.0	142.7	143.8
1978	208.0	174.1	146.4	162.2	166.2	148.2	155.5
1979	235.4	186.2	159.9	178.0	181.2	158.4	166.7
1980	260.6	201.4	178.7	200.7	199.3	173.5	185.3
1981	290.4	226.4	191.4	237.6	221.0	191.0	209.2

Source: Statistics Canada 62-001

TABLE 16
PUBLIC AND PRIVATE INVESTMENT BY TYPE AND BY INDUSTRY
(\$ MILLION)

BY TYPE	1975	1976	1977	1978	1979	1980	1981
New Construction	82.9	73.6	86.0	127.9	145.0	129.4	110.7
New Machinery	34.8	37.7	44.5	43.8	56.4	53.8	83.0
Total New Capital Expenditure	117.7	111.3	130.5	171.7	201.4	183.2	193.7
Repair Expenditure on Construction	24.5	26.5	32.6	37.6	38.1	34.6	38.2
Repair Expenditure on Machinery	12.5	18.0	16.5	19.5	28.0	26.8	28.8
Total New and Repair Expenditure	154.7	155.8	179.6	228.8	267.5	244.6	260.7
<u>Totals by Industry</u>							
Primary Industries and Construction	29.3	36.1	36.7	40.4	54.4	58.2	57.2
Manufacturing	4.7	6.8	13.5	7.1	6.9	7.2	7.7
Transportation	1.4	1.8	1.7	3.7	8.9	8.9	20.1
Communication	9.6	9.5	12.4	12.1	13.7	14.2	14.1
Miscellaneous Utilities	5.6	8.7	6.9	6.5	6.0	10.0	15.6
Trade	3.5	3.7	4.6	6.1	7.8	6.6	6.6
Finance	2.3	2.8	5.8	12.6	11.2	10.9	8.9
Commercial Services	5.5	4.7	5.9	6.5	8.0	6.8	7.7
Institutions	17.5	10.3	10.5	17.0	28.1	27.6	18.5
Government Departments	35.8	29.8	39.1	54.0	52.4	50.5	60.7
Housing	39.5	41.6	42.5	62.8	70.1	43.7	43.6
TOTAL	154.7	155.8	179.6	228.8	267.5	244.6	260.7

1981 data = Revised Intentions

1980 data = Preliminary Actual

Source: Statistics Canada 61-206

TABLE 17

**PROVINCIAL GROSS DOMESTIC PRODUCT AT FACTOR COST
FOR SELECTED INDUSTRIES AND PERCENTAGE ANALYSIS
PRINCE EDWARD ISLAND 1974-1979**

	1974		1975		1976		1977		1978		1979	
	\$ million	%	\$ million	%	\$ million	%	\$ million	%	\$ million	%	\$ million	%
Agriculture	35.9	27.8	59.5	36.9	50.7	32.4	37.8	24.4	63.4	29.0	67.6	27.0
Forestry	0.0	0.0	0.0	0.0	0.0	0.0	0.0	0.0	0.0	0.0	x	x
Fishing	8.0	6.2	7.6	4.7	8.3	5.3	9.9	6.4	16.6	7.6	21.8	8.7
Hunting and Trapping	0.1	0.0	0.1	0.1	0.1	0.1	0.1	0.1	0.1	0.0	x	x
Mines (including Million), Quarries and Oil Wells	0.1	0.0	0.0	0.0	0.0	0.0	0.0	0.0	0.0	0.0	0.0	0.0
Manufacturing Industries	26.8	20.8	29.8	18.5	34.8	22.3	37.6	24.3	50.7	23.2	66.8	26.7
Construction	37.7	29.2	39.0	24.2	31.4	20.1	36.8	23.8	51.0	23.3	54.1	21.6
Electric Power, Gas and Water Utilities	7.3	5.7	8.6	5.3	11.7	7.5	11.8	7.6	13.9	6.3	14.2	5.7
Accommodation and Food Services	13.3	10.3	16.5	10.3	19.3	12.3	20.8	13.4	23.1	10.6	25.7	10.3
Total	129.2	100.0	161.1	100.0	156.3	100.0	154.8	100.0	218.8	100.0	250.4	100.0

x confidential

Source: Statistics Canada 61-202

TABLE 18

TRADE AND FINANCIAL STATISTICS

Year	Value of Retail Trade (\$ Million)	Cheques Cleared (\$ Million)	Value of New Motor Vehicles Sold (\$'000)	No. of Motor Vehicles Sold	Life Insurance Sales (\$ Million)
1974	206.9	1,468.6	23,797	5,359	51.6
1975	240.6	1,973.3	26,577	5,148	64.3
1976	262.2	2,099.7	29,821	5,336	73.4
1977	286.3	2,149.1	31,598	5,470	72.4
1978	335.5	2,568.4	41,114	6,528	87.3
1979	360.3	2,715.1	47,220	6,553	96.6
1980	368.0	3,377.7	42,731	5,388	102.0
1981	399.9	4,034.5	40,639	4,650	
January	25.9	315.5	2,535	288	8.4
February	25.4	236.5	3,030	352	9.3
March	28.7	329.5	4,558	510	13.0
April	32.6	342.1	4,477	507	11.1
May	34.6	286.7	5,082	582	12.0
June	36.6	310.2	4,812	545	14.6
July	40.8	371.9	3,822	433	11.7
August	37.6	354.0	2,574	286	12.5
September	33.0	399.8	2,836	323	
October	33.6	393.7	2,404	334	
November	32.0	330.8	2,586	284	
December	39.1	363.7	1,921	206	

Source: Statistics Canada 11-003, 61-001, 63-007, 63-208

TABLE 19

VALUE OF BUILDING PERMITS BY TYPE

Year	Total (\$'000)	Residential (\$'000)	Non-Residential (\$'000)
1976	48,614	28,581	20,033
1977	68,961	40,094	28,867
1978	90,172	39,859	50,313
1979	78,764	48,976	29,788
1980	45,833	24,776	21,057
1981 ¹	39,241	17,694	21,547

¹ Total, Residential and Non-Residential figures for 1981 are from January to November inclusive.

Source: Statistics Canada 64-001

TABLE 20
BUILDING PERMITS BY TYPE OF DWELLING
PRINCE EDWARD ISLAND

Year	Single Family Dwellings	Semi-Detached	Apartment and Row Housing Units	Total
1977	919	90	297	1,306
1978	922	118	571	1,611
1979	941	52	279	1,272
1980	466	28	67	561
1981	304	6	52	362

Source: P.E.I. Housing Corporation

TABLE 21
HOUSING STARTS, COMPLETIONS AND UNDER CONSTRUCTION
FOR P.E.I. BY QUARTER 1978-1981

Quarter	Starts	Completions	Under Construction
1978			
1st	237	133	446
2nd	336	282	499
3rd	310	284	523
4th	327	337	528
1979			
1st	230	334	419
2nd	262	117	554
3rd	347	421	477
4th	229	301	403
1980			
1st	93	184	311
2nd	84	170	225
3rd	173	137	261
4th	125	201	179
1981			
1st	29	129	79
2nd	119	47	140
3rd	41	98	80
4th	14	46	48

Source: Statistics Canada 64-002

TABLE 22
SUBDIVISIONS APPROVED

Fiscal Year	Permanent Dwellings	Cottages	Other	Total
1975-76	487	80	26	593
1976-77	423	76	39	538
1977-78	375	47	28	450
1978-79	461	78	40	579
1979-80	369	39	27	435
1980-81	234	42	20	296

Note: Figures for Permanent Dwellings include all single lot subdivisions.

Source: Department of Community Affairs

TABLE 23
FARM CASH RECEIPTS
(\$'000)

	1975	1976	1977	1978	1979	1980	1981
Oats	105	114	296	431	668	934	1,071
Potatoes	24,961	48,855	31,081	26,707	29,743	44,996	79,174
Fruit	750	616	687	1,189	745	1,012	776
Vegetables	2,465	1,814	1,420	2,124	2,581	2,714	3,041
Other Crops ¹	7,312	8,058	9,696	9,028	16,611	13,718	21,005
Total Crops	35,593	59,457	43,180	39,479	50,348	63,374	105,067
Cattle & Calves	14,281	12,563	14,584	18,493	22,462	25,765	20,257
Hogs	12,803	12,514	12,560	16,844	18,633	20,005	22,828
Sheep & Lambs	91	107	120	135	132	144	138
Dairy	11,192	12,008	12,641	14,519	17,579	21,789	26,665
Poultry	513	771	615	962	1,032	517	210
Eggs	1,612	1,762	1,885	1,891	2,095	2,362	2,655
Other Livestock & Products	712	736	911	1,120	1,289	1,365	1,772
Total Livestock & Products	41,204	40,461	43,316	53,964	63,222	71,947	74,525
Other Cash Receipts ²	9,322	4,092	4,543	7,627	7,870	7,671	10,412
Total Cash Receipts	86,119	104,010	91,039	101,070	121,440	142,992	190,004

1 Floriculture and nursery are included in other crops.

2 "Other cash receipts" is made up of forest and maple, dairy subsidy, deficiency payments, and provincial stabilization payments.

Source: Statistics Canada 21-001

TABLE 26

**INDEX NUMBER OF FARM PRICES
OF AGRICULTURE PRODUCTS — P.E.I.**

	1971 = 100
1973	210.5
1974	230.1
1975	208.5
1976	238.8
1977	224.0
1978	229.8
1979	251.3
1980	280.6
1981	369.5
January	386.0
February	383.7
March	400.9
April	404.3
May	425.1
June	468.1
July	464.8
August	312.6
September	307.3
October	304.2
November	285.0
December	290.0

Source: Statistics Canada 62-003

TABLE 27
COMPARISON OF SELECTED CENSUS FARM DATA
1971 & 1976

	<u>1971</u>	<u>1976</u>
Total Number of Farms	3,462	3,054
Total Farm Population	16,115	12,279
Total Land Area	1,399,040	1,399,040
Area in Census Farms (Acres)	677,810	687,076
<u>Use of Farm Land</u>		
Improved Land	443,654	479,749
Cropland ¹	322,239	375,208
Pasture	98,623	89,866
Other	22,792	14,675
Unimproved Land	224,156	207,327
Woodland	173,029	169,339
Other	51,127	37,988
Total Capital Value ² (\$)	146,030,000	307,202,239
Value of Land & Buildings (\$)	90,371,300	202,480,157
Value of Machinery & Equipment (\$)	35,636,000	72,484,979
Value of Livestock & Poultry (\$)	20,016,110	32,237,103

1 = includes field, vegetable, fruit & nursery cropland.

2 = in 1971, data do not add because of rounding.

NOTE: Census Farm. This term is defined in the 1976 census as a farm, ranch or other agricultural holding of one acre or more with sales of agricultural products during the year 1975 of \$1,200 or more.

SOURCE: Statistics Canada 96 - 802

TABLE 28

**CENSUS FARMS CLASSIFIED BY ECONOMIC CLASS
1971 & 1976**

Economic Class	1971		1976	
	No. of Farms	%	No. of Farms	%
Total No. of Farms	3,462	100	3,054	100
Value of Agricultural Products Sold				
\$100,000 & over			149	4.9
75,000 - 99,999	} 115	3.3	92	3.0
50,000 - 74,999			132	4.3
35,000 - 49,999			88	2.5
25,000 - 34,999			133	3.8
15,000 - 24,999			288	8.3
10,000 - 14,999	385	11.1	359	11.8
5,000 - 9,999	909	26.4	543	17.8
2,500 - 4,999	862	24.9	514	16.8
1,200 - 2,499	674	19.5	523	17.1
Institutional Farms	8	0.2	7	0.2

SOURCE: Statistics Canada 96 - 802

TABLE 29

**CENSUS FARMS CLASSIFIED BY SIZE OF FARM &
AGE OF OPERATOR, 1971 & 1976**

	1971		1976	
	Number	Percentage	Number	Percentage
Total Number of Farms	3,462	100.0	3,054	100.0
Farms classified by size of farm				
Under 3 acres	13	.4	15	.5
3 - 9 acres	25	.7	18	.6
10 - 69	302	8.7	284	9.3
70 - 129	1,029	29.8	753	24.7
130 - 179	718	20.8	533	17.4
180 - 239	569	16.5	528	17.3
240 - 399	566	16.3	572	18.7
400 - 559	141	4.1	207	6.8
560 - 759	60	1.7	76	2.5
760 - 1,119	19	.5	40	1.3
1,120 - 1,599	12	.3	18	.6
1,600 acres and over	8	.2	10	.3
Operators classified by age				
Operators reporting	3,462	100.0	3,054	100.0
Under 25	68	2.0	52	1.7
25 - 34	448	12.9	402	13.2
35 - 44	758	21.9	677	22.2
45 - 54	947	27.4	820	26.8
55 - 59	521	15.0	381	12.5
60 - 64	357	10.3	354	11.6
65 - 69	203	5.9	196	6.4
70 years & over	160	4.6	172	5.6

SOURCE: Statistics Canada 96 - 802

TABLE 30

FISH LANDINGS AND VALUE (MILLIONS)

Year	Groundfish		Pelagic & Estuarial		Lobster & Shellfish		Irish Moss		Total	
	Weight lbs.	Value \$	Weight lbs.	Value \$	Weight lbs.	Value \$	Weight lbs.	Value \$	Weight lbs.	Value \$
1975	14.9	1.1	5.4	0.5	11.4	9.1	41.7	1.6	73.4	10.7
1976	15.0	1.1	7.0	1.1	11.3	9.7	28.8	0.9	62.1	12.7
1977	22.5	2.1	5.5	1.2	11.8	10.8	30.1	1.1	70.0	15.2
1978	28.7	3.2	8.8	1.6	15.2	17.9	31.7	1.9	84.5	24.6
1979	34.0	4.3	10.6	1.9	16.7	20.3	42.9	2.7	104.2	29.1
1980	42.3	4.7	12.2	2.3	16.5	18.0	35.2	1.8	106.2	26.8
1981 p	45.1	5.4	14.0	2.3	17.6	22.3	37.5	1.9	114.2	31.9

p preliminary

Source: P.E.I. Department of Fisheries

TABLE 31

P.E.I. LOBSTER LANDINGS STATISTICS COMPARISON

Statistical District	Total Pounds					
	1976	1977	1978	1979	1980	1981 p
88 (88)	2,414,672	2,481,839	2,877,981	3,206,820	2,937,160	3,001,256
87 (87)	1,345,988	1,610,007	1,820,085	2,137,880	1,886,197	2,189,318
86B (96)	313,488	400,210	280,436	403,332	450,113	410,637
86A (86)	85,589	223,508	420,984	211,584	223,569	243,307
85B (95)	640,289	679,989	758,023	859,560	847,885	839,691
85A (85)	1,702	3,288	51,081	24,244	51,227	47,053
83B (93)	478,490	473,713	468,658	641,364	679,770	672,945
83A (83)	406,591	401,083	562,314	425,372	380,540	516,479
82B (92)	1,420,349	1,637,469	1,782,479	2,300,976	2,317,926	1,994,684
82A (82)	1,398,710	1,167,774	2,093,096	1,622,144	1,960,225	1,964,718
Provincial Total Pounds	8,505,868	9,078,878	11,115,137	11,833,276	11,734,612	11,880,088
Dollar Value	8,510,471	10,012,037	16,648,676	18,073,895	15,435,990	18,519,450

p preliminary

Note: The numbers of the Statistical Districts have changed. The new numbers appear in parenthesis. This change in numbers does not affect the boundaries of the Statistical Districts. In future years the new numbers will appear in the map.

Source: P.E.I. Department of Fisheries

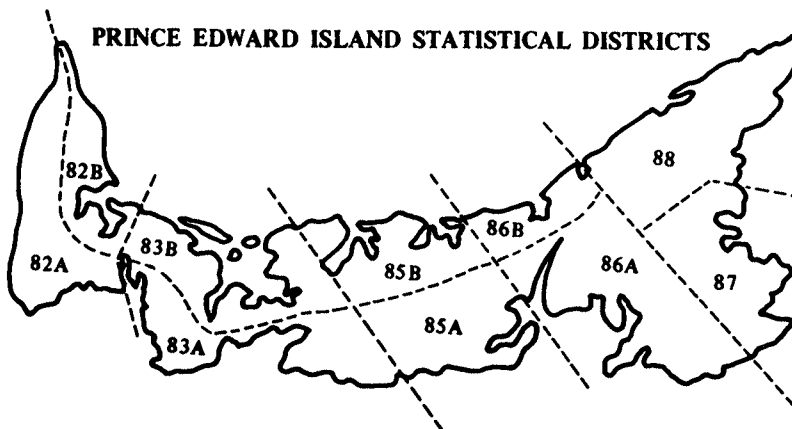


TABLE 32

AVERAGE PRICES RECEIVED BY P.E.I. FISHERMEN
SELECTED YEARS AND SPECIES
(CENTS PER POUND)

Year	Cod	Hake	Herring	Mackerel	Smelts	Lobster	Oysters
1919	2.5	2.0	2.0	5.6	6.0	8.0	4.6
1924	1.5	1.1	1.4	3.9	6.7	8.6	4.3
1929	1.4	0.9	1.4	2.9	7.4	8.4	3.2
1934	0.8	0.4	0.5	1.5	3.8	7.0	1.8
1939	0.8	0.4	0.4	1.4	3.9	6.6	2.8
1944	3.6	2.9	1.2	4.5	8.0	17.5	4.3
1949	2.6	1.9	1.2	3.8	9.2	20.3	4.1
1954	2.6	1.5	1.0	3.9	9.1	26.9	6.0
1959	2.9	1.5	1.9	7.0	11.9	33.9	13.2
1964	3.8	3.1	2.0	4.0	10.2	53.8	13.2
1969	4.7	4.1	1.5	2.4	8.5	65.6	19.2
1970	5.1	3.4	1.2	2.7	9.7	71.5	20.8
1971	5.6	3.9	1.4	2.2	10.2	71.5	20.9
1972	6.3	5.1	3.1	2.7	11.8	86.6	18.2
1973	8.2	5.9	4.7	3.7	15.5	97.1	18.6
1974	9.4	6.1	5.5	4.2	12.0	101.7	19.8
1975	9.8	7.4	7.3	5.2	9.1	94.7	23.3
1976	11.7	7.1	6.7	5.9	10.6	100.0	23.0
1977	14.6	8.9	7.6	6.8	10.8	110.2	24.5
1978	14.3	8.6	9.5	8.9	15.8	150.0	27.7
1979	18.0	9.7	11.5	10.6	17.8	152.7	33.2
1980	14.0	9.2	14.1	12.0	10.0	131.7	45.0
1981 p	16.1	10.0	10.4	11.6	10.0	155.9	53.1

p preliminary

Source: P.E.I. Department of Fisheries

TABLE 33

TOURISM STATISTICS MAY 15 - OCTOBER 31
AUTO AND AIR

	1975	1976	1977	1978	1979	1980	1981
Number of Tourist Parties	222,000	213,013	207,852	212,786	213,403	216,234	214,909

Note: 1981 data are subject to revision.

MAY 15 - OCTOBER 31
AMOUNT EXPENDED BY TOURISTS BY CATEGORY
ALL MODES¹ (MILLIONS OF DOLLARS)

	1975	1976	1977	1978	1979	1980	1981
Gas and Oil	4.5	3.2	3.3	3.5	4.5	4.9	5.6
Auto Repair & Maintenance	0.3	0.2	0.3	0.4	0.3	0.3	0.3
Food & Beverages (excluding alcohol)	3.4	2.8	3.9	4.1	4.1	4.6	5.2
Alcoholic Beverages	1.9	1.3	1.6	1.8	2.1	1.8	2.1
Restaurant Meal & Beverages	6.7	5.7	6.3	7.0	8.7	10.9	12.4
Accommodation	7.6	6.7	7.0	7.6	9.0	10.7	12.2
Recreation & Entertainment	3.0	2.8	2.9	3.1	3.4	4.0	4.5
Handcrafts	1.4	1.4	2.4	2.7	2.7	3.7	4.2
Other	1.3	2.4	1.7	2.5	3.8	2.6	2.9
Total	30.1	26.5	29.4	32.7	38.6	43.5	49.4

¹ Auto, Air, Bus and Cruise Ship.

Note: 1980 and 1981 date are preliminary.

Source: P.E.I. Department of Tourism, Industry and Energy, Tourism Branch

TABLE 34

TOURISM STATISTICS — 1981 SEASON
EXIT POINT LOCATION (MAY 15 - OCTOBER 31)

	Spring (May 15 - June 11)	Summer (June 12 - Sept. 12)	Fall (Sept. 13 - Oct. 31)	
Auto				
Borden & Wood Islands				
Parties	13,636	155,831	25,191	
Percent	6.4	72.5	11.7	
Air				
Charlottetown Parties	2,530	13,803	3,918	
Percent	1.2	6.4	1.8	Total
Total Parties	16,166	169,634	29,109	214,909
Percent	7.6	78.9	13.5	100.0

AIR AND AUTO PARTIES (MAY 15 - OCTOBER 31)
ORIGIN

Tourist Origin	Parties	Percent
Newfoundland	4,820	2.2
Nova Scotia	68,072	31.7
New Brunswick	51,600	24.0
Quebec	30,927	14.4
Ontario	27,620	12.9
Other Canada	6,930	3.2
New England	10,483	4.9
Other States	12,949	6.0
Other World	1,508	0.7
Total	214,909	100.0

TABLE 34 (CONT'D)

Air and Auto Parties (May 15 - October 31)

Purpose of Trip

Purpost of Trip	Parties	Percent
Convention	3,009	1.4
Business	20,846	9.7
Shopping	215	0.1
Sightseeing	95,420	44.4
Visiting Friends/Relatives	44,916	20.9
Personal Affairs	10,745	5.0
Outdoor Recreation/Sports	29,013	13.5
Commuting	1,934	0.9
Other	8,811	4.1
Total	214,909	100.0

Auto and Air (May 15 - October 31)

Accommodation Usage

Accommodation Type	Parties	Percent
Hotel/Motel	67,911	31.6
Cabins and Cottages	18,052	8.4
Tourist Home	7,092	3.3
Owned, Borrowed, Vacation Home	3,009	1.4
Friends', Relatives' Accommodation	48,355	22.5
Federal Campground	12,250	5.7
Provincial Campground	16,118	7.5
Commercial Campground, Trailer Park	37,179	17.3
Farm Vacation Home	1,075	0.5
Other Accommodation	3,868	1.8
Total	214,909	100.0

Note: 1981 data are preliminary

Source: P.E.I. Department of Tourism, Industry and Energy, Tourism Branch.

TABLE 35

PRINCE EDWARD ISLAND RESTAURANT, CATERER AND TAVERN RECEIPTS
BY KIND OF BUSINESS BY MONTH FOR 1981 (\$'000)

Month	Restaurants		Take-outs	Caterers	Taverns	Total
	Licensed	Unlicensed				
January	631.8	985.1	349.8	106.5	37.8	2,111.2
February	614.3	879.8	382.4	94.3	36.0	2,006.8
March	641.7	1,153.1	445.6	112.4	37.9	2,390.7
April	679.9	997.9	463.9	94.3	40.4	2,276.6
May	746.4	1,259.8	697.8	101.6	44.8	2,850.5
June	1,120.8	1,293.6	807.4	105.0	47.6	3,374.6
July	2,016.0	1,871.1	1,095.1	113.0	54.7	5,150.1
August	2,303.5	1,837.1	1,101.3	93.9	48.6	5,384.6
September	1,290.2	1,154.5	570.0	118.6	44.0	3,177.5
October	984.3	951.6	448.0	104.6	42.3	2,530.9
November p	804.4	847.4	430.5	115.7	41.1	2,239.2
December						
Total 1981						

p preliminary

Source: Statistics Canada 63-011

TABLE 36

PRINCIPAL STATISTICS OF P.E.I. MANUFACTURING
ESTABLISHMENTS — MANUFACTURING ACTIVITY¹

Year	Establish- ments	Production & Related Workers				Cost of Fuel & Electricity (\$'000)	Cost of Materials & Supplies (\$'000)	Value of Shipments of goods of own Manufacture (\$'000)	Value Added (\$'000)
		Male	Female	Man Hrs. Paid (\$'000)	Wages (\$'000)				
1975	117	1,361	456	3,817	13,090	2,234	74,173	108,562	34,132
1976	106	1,278	379	2,560	14,262	2,356	76,883	116,152	37,173
1977	104	1,299	457	3,792	16,263	2,902	84,676	130,374	42,016
1978	130	1,669	559	4,747	22,189	3,523	114,832	171,451	58,038
1979	150	1,740	690	5,172	25,111	4,317	135,312	212,473	75,522

¹ These statistics refer to the production activity of manufacturing establishments.

Source: Statistics Canada Survey of Manufacturers 31-203

TABLE 37

PRINCIPAL STATISTICS OF MANUFACTURING INDUSTRIES
TOTAL ACTIVITY¹

Year	Working Owners & Partners	Administrative office and other employees		Total Employees		Cost of Materials, Supplies & Goods for Resale (\$'000)	Value of Shipments & other Revenue (\$'000)	Value Added (\$'000)	
		Male	Female	Salaries (\$'000)	Number				Salaries & Wages (\$'000)
1975	40	411	125	5,017	2,353	18,107	88,736	125,800	36,741
1976	33	347	134	5,218	2,138	19,481	88,954	132,550	41,500
1977	28	360	135	5,808	2,251	22,071	99,557	148,228	44,989
1978	39	405	148	7,553	2,781	29,742	148,366	210,392	63,445
1979	46	469	167	9,410	3,066	34,522	173,441	260,326	85,245

¹ These Statistics refer to the total activity of manufacturing firms and therefore include non-manufacturing activities of manufacturing establishments and activities of separate head offices, sales offices and auxiliary units.

Source: Statistics Canada Survey of Manufacturers 31-203.

Note: In August 1981, a survey of manufacturing employment which included employees and working owners/partners was carried out by the Prince Edward Island Department of Finance. There are approximately 329 manufacturing firms on P.E.I., 286 of which were included in the survey. Survey results indicated an estimated average annual 1980 employment of 4,187. Manufacturing employment as of March 1981 was 3,035.

TABLE 38

VALUE ADDED IN MANUFACTURING ACTIVITY
 BY MAJOR GROUP AND INDUSTRY
 P.E.I. 1975-1979
 (\$'000)

	1975	1976	1977	1978	1979
Food & Beverage Industry	23,509	25,968	31,394	41,620	56,119
Fish Products Industry	4,314	5,401	6,990	10,044	16,400
Dairy Products Industry	4,489	6,518	7,637	9,583	16,872
Other Food and Beverage	14,706	14,049	16,767	21,993	22,847
Wood Industries	x	925	1,002	2,116	x
Furniture & Fixtures Industry	x	82	32	130	59
Printing, Publishing & Allied Industries	2,766	2,865	x	4,209	4,535
Machinery Industries	915	1,163	1,119	1,375	2,128
Non-metallic Mineral Products Industries	167	112	402	696	x
Miscellaneous Manufacturing Industries	x	173	x	517	903
Total All Industries	34,132	37,173	42,016	58,038	75,522

x confidential

Source: Statistics Canada 31-203

TABLE 39
PRINCE EDWARD ISLAND
DEMAND FOR POWER (ABILITY TO MEET)
1977-1982
M.W.

	1977	1978	1979	1980 ¹	1981 ¹	1982 ¹
Gross Capability	112	112	112	132	132	139
Firm power peak load on province	95	98	98	101	105	110
Indicated reserve	17	14	14	31	27	29
Indicated reserve as percentage of firm peak power load	17.9	14.3	14.3	30.7	25.7	26.4

¹ 1980, 1981 and 1982 are forecasts.

Note: Includes receipts of firm power from other provinces.

Source: Statistics Canada 57-204

ELECTRIC ENERGY AVAILABLE

<u>Year</u>	<u>MKWH</u>
1975	418
1976	445
1977	452
1978	478
1979	512
1980	514
1981 January	48
February	41
March	43
April	41
May	40
June	39
July	42
August	45
September	42
October	43
November	43
December	

Source: Statistics Canada 11-003

TABLE 40

SALES OF REFINED PETROLEUM PRODUCTS — CUBIC METERS
PRINCE EDWARD ISLAND 1975-1981

	1975	1976	1977	1978	1979	1980	1981*
Motor Gasoline	179,092	182,588	186,243	193,154	203,989	196,035	153,141
Diesel	74,052	51,010	78,343	57,946	61,857	57,502	47,577
Light Fuel Oil	144,449	154,143	150,011	153,794	146,640	152,902	105,365
Heavy Fuel Oil	159,387	169,875	151,441	94,875	76,070	67,507	26,878
Other	80,091	81,362	78,660	77,922	63,127	63,181	39,120
Total	637,071	638,978	644,698	577,691	551,683	537,127	372,081

*Figures are from January - October 1981 inclusive.

Source: Statistics Canada 45-004

SCHEDULE OF GASOLINE SALES FOR THE
FISCAL YEAR ENDED MARCH 31
(LITRES)

Fiscal Year	Taxed Gasoline (net)	Tax Exempt Gasoline			
		Farmer	Fisherman	Other	Total
1977	170,243,000	4,110,000	5,651,000	3,573,000	13,334,000
1978	176,508,000	3,250,000	5,578,000	2,691,000	11,519,000
1979	186,909,000	2,914,000	5,819,000	1,682,000	10,415,000
1980	192,382,000	2,764,000	6,337,000	1,695,000	10,796,000
1981	184,009,000	2,520,000	6,438,000	1,671,000	10,629,000

Source: P.E.I. Department of Finance

TABLE 41
TRANSPORTATION STATISTICS
FERRY

Borden - Cape Tormentine Service

Year	Autos	Trailers & Campers	Trucks	Tractor Trailers	Buses	Total Vehicles	Rail Cars	Passengers
1977	437,885	51,078	80,742	55,331	3,234	628,270	23,485	1,476,394
1978	447,107	47,950	96,366	62,598	3,232	657,253	22,197	1,517,957
1979	442,465	46,609	105,230	66,608	3,356	664,268	19,684	1,583,471
1980	464,234	38,741	88,079	70,772	3,471	665,297	13,345	1,552,555
1981	457,654	36,696	86,045	68,847	3,531	659,383	14,061	1,530,187

Northumberland Ferries Limited

Date	Passengers	Autos	Trucks, Recreation Vehicles and Buses
Apr. 28 - Dec. 10/77	497,507	138,436	55,286
Apr. 21 - Dec. 10/78	527,768	151,797	50,034
Apr. - Dec. /79	552,067	159,485	53,409
Apr. 19 - Dec. 14/80	541,328	149,440	58,085
Apr. 14 - Dec. 20/81	545,622	156,257	51,100

P.E.I. - Magdalen Islands

Year	No. of Voyages	Passengers	Autos	Trucks	Trailers	Bicycles	Heavy Machinery
1977	274	48,387	12,720	3,284	1,315	1,806	42
1978	274	47,984	12,803	3,234	1,221	1,595	33
1979	286	54,684	14,548	3,301	1,569	2,069	21
1980	290	49,184	13,180	3,886	1,098	1,839	36
1981	279	48,507	13,652	4,115	795	1,766	51

Source: P.E.I. Department of Highways and Public Works

TABLE 41 (CONT'D)

Rail Carload Freight

Year	Inward	Outward	Total
1978	5,451	5,854	11,305
1979	5,426	4,425	9,851
1980	4,266	2,676	6,942
1980	4,186	3,086	7,272
% Change 1980/81	-1.9	15.3	4.8

1981 Bus Service

P.E.I. to Amherst, N.S. and Moncton, N.B.

	Amherst	Moncton
Passengers from P.E.I. Arriving	11,961	4,157
Passengers destined P.E.I. Leaving	6,892	9,449

Intra-Provincial Bus Service - Island Transit Co-Operative Ltd.

	Number of Passengers	
	1980	1981
Charlottetown - Souris	825	1,192
Charlottetown - Tignish	8,591	8,309
Charlottetown - New Glasgow (summer service June - Sept.)	2,221	2,891
Total	11,637	12,392

Air Passengers

	To P.E.I.				From P.E.I.				Total			
	1978	1979	1980	1981	1978	1979	1980	1981	1978	1979	1980	1981
Eastern Provincial Airways	45,767	49,278	45,237	46,720	44,986	46,837	44,500	44,015	90,753	96,115	89,737	90,735
Air Canada	28,500	26,718	33,655	30,720	28,284	36,051	36,413	35,663	56,784	62,769	70,068	66,383

Source: P.E.I. Department of Highways and Public Works

TABLE 42

MOTOR VEHICLE REGISTRATIONS

Year	Cars	Trucks	Trailers	Other	Total
1975	40,661	11,656	5,265	4,782	62,364
1976	41,938	12,288	5,739	3,890	63,855
1977	44,106	13,380	5,887	4,460	67,833
1978	46,352	14,016	6,489	4,827	71,684
1979	47,632	15,430	6,972	5,649	75,631
1980	47,608	15,864	6,986	5,653	76,111
1981	48,564	14,969	7,073	5,376	75,982

Note: Other includes buses, motorcycles, farm trucks, snowmobiles and all other vehicles.

Source: Highway Safety Division

TABLE 43

SCHOOL ENROLMENT

School Year	Elementary (1-6)	Secondary (7-12)	Child Development	Total
1975-76	14,384	14,128	131	28,643
1976-77	13,838	14,369	152	28,359
1977-78	13,598	14,300	156	28,054
1978-79	13,250	14,082	160	27,492
1979-80	13,018	13,830	179	27,027
1980-81	12,902	13,527	229	26,658
1981-82	12,655	13,176	218	26,049

1 Enrolment figures are for public schools, including vocational high schools and private schools.

Source: P.E.I. Department of Education

TABLE 44

POST SECONDARY ENROLMENTS

School Year	University of Prince Edward Island			Holland College	
	Full-time	Part-time	Summer	Full-time	Part-time
1975-76	1,463	887	1,224	791	1,759
1976-77	1,478	854	1,107	765	1,443
1977-78	1,533	812	1,107	777	1,353
1978-79	1,390	816	989	778	1,991
1979-80	1,332	725	959	695	2,409
1980-81	1,321	705	983	672	1,861
1981-82	1,390	763	920	790 p	2,150 p

p preliminary

Source: Registrar's office: University of Prince Edward Island and Holland College.

TABLE 45

VOCATIONAL EDUCATION ENROLMENTS

School Year	Full time ¹	Part time ²	Vocational High School	Apprenticeship Training ³	ETC ⁴	BTSD ⁵	Adult Night Classes ⁶	WAT ⁷
1976-77	1,370	306	791	288	201	589	789	38
1977-78	1,015	600	796	306	136	495	737	48
1978-79	1,209	693	735	393	113	408	420	57
1979-80	2,284 ⁹		673	305	119	286	501	60
1980-81	1,800 ⁹		776	303	110	293	567	78
1981-82					140			71 ⁸

1 Students are in attendance for six hours training per day.

2 Students are in attendance for half days or three hours training per day.

3 Six weeks (30 hours per week) training periods.

4 Employment Training Corps. Figures for E.T.C. are given by calendar year not by school year; therefore, 1976-77 figures represent E.T.C. figure for 1976 calendar year, . . . , 1981-82 figure represents E.T.C. figure for 1981 calendar year.

5 B.T.S.D. includes Basic Training for Skill Development, Basic Job Readiness (B.J.R.), Occupational Exploratory Training (O.E.T.), and Career Exploration for Women (C.E.W.).

6 Adult Education Classes.

7 Work Adjustment Training figures for W.A.T. are from April of former year to March of latter year.

8 1981-82 figure is from April 1980 to February 1982.

9 1979-80 and 1980-81 figures include part-time.

Note: Full-time and part-time figures do not include general interest and short courses.

Source: P.E.I. Department of Labour, Holland College and Occupational Training Centre.

TABLE 46

EDUCATIONAL EXPENDITURES

Fiscal Year	Vocational & Post Secondary (\$) ¹	Elementary & Secondary (\$) ²	Total (\$)
1975-76	13,070,806	38,763,219	51,834,025
1976-77	11,691,345	42,095,097	53,786,442
1977-78	14,560,286	45,354,648	59,914,934
1978-79	15,668,612	48,884,059	64,552,671
1979-80	16,676,090	53,732,878	70,408,968
1980-81	18,625,165	60,523,307	79,176,472

- 1 Figures include expenditures on manpower training programs for years 1975-76. Commencing in 1976-77 the costs of manpower training programme appear as expenditures of the P.E.I. Department of Labour and are not included as an educational expenditure.
- 2 Elementary and Secondary includes grants to Regional School Boards; the Provincial Library Services; school construction; and programs operated directly by the Department of Education, as well as administrative costs for the Department. Community Service Programs are included in the expenditures for the years 1975-76 to 1979-80. Commencing in 1980-81 the cost of Community Service Programs appear as expenditures of the Department of Community Affairs.

Source: P.E.I. Department of Education

TABLE 47

HEALTH AND HOSPITAL CARE STATISTICS

	1975	1976	1977	1978	1979	1980	1981
Practicing Physicians	129	129 ¹	135 ¹	136 ²	132 ²	140 ²	141 ²
Physicians per '000 Population	1.10	1.09	1.13	1.11	1.08	1.13	1.13
Total Bed Capacity			1,883	1,931	1,915	1,899	1,899
— Active Treatment Hospitals			686	694	678	662	662
— Liscensed Nursing Homes			263	278	278	278	278
— Other Institutions (includes Homes for the Aged, Alcoholic Treatment Foundation, Hillsborough and Riverside Hospitals, CFB Summerside, Sanitorium)			934	959	959	959	959
Bed Capacity per '000 population			15.7	15.8	15.6	15.3	15.3

- 1 Includes all physicians who may be part-time/semi-active, and 12 physicians who are employed in government hospitals.
- 2 Does not include physicians who are employed in government hospitals.

Source: P.E.I. Health and Hospital Services Commission

TABLE 48
ACTIVE TREATMENT HOSPITALS

Calendar Year	Expenditures \$	Rate of Growth of Expenditure %	Cost Per Capita \$	Rate of Growth of Cost Per Capita %
1975	14,782,050	25.5	126.43	23.4
1976	16,361,537	10.7	138.66	9.8
1977 ¹	18,412,357	12.5	153.18	10.5
1978 ¹	20,488,266	11.3	167.93	9.6
1979 ¹	22,807,985	11.3	183.49	9.3
1980 ¹	26,839,584	17.7	215.93	17.7

1 1977 represents the fiscal year 1977-78; 1978 represents the fiscal year 1978-79 and 1979 represents the fiscal year 1979-80 and 1980 represents the fiscal year 1980-81.

Source: P.E.I. Health and Hospital Services Commission.

TABLE 49
PHYSICIANS' SERVICES

Fiscal Year	Total Number of Claims	Claims Amount \$	Cost Per Capita \$
1974-75	460,542	5,191,676	44.37
1975-76	477,679	5,703,125	47.93
1976-77	510,626	6,364,609	53.94
1977-78	528,832	7,124,652	59.37
1978-79	571,074	7,997,270	65.55
1979-80	557,515	8,667,314	69.73
1980-81	554,841	10,086,829	81.15

Source: P.E.I. Health and Hospital Services Commission

TABLE 50

**P.E.I. DEPARTMENT OF HEALTH AND SOCIAL SERVICES
PROVINCIAL SERVICELOAD TRENDS — JANUARY 1981 - DECEMBER 1981**

Service	Jan.	Feb.	March	April	May	June	July	Aug.	Sept.	Oct.	Nov.	Dec.
Adoptions	128	129	137	138	136	134	134	134	132	135	136	137
Children in Care	222	220	225	236	240	237	238	238	238	237	238	249
Day Care	268	287	292	299	307	289	222	205	229	237	244	244
Financial Assistance	4,270	4,463	4,517	4,419	4,337	4,213	4,259	4,303	4,344	4,396	4,602	4,684
Foster Parents	160	160	156	148	151	158	163	165	162	155	156	160
General Counselling	265	264	286	296	285	289	285	271	263	260	268	259
Home Helper	140	138	137	125	123	122	121	122	123	113	109	114
Juvenile Delinquent	59	67	66	71	72	85	79	89	89	96	94	94
Nutrition	211	219	224	244	227	247	237	238	211	241	213	239
Private Adoptions	6	10	9	10	7	8	8	7	7	8	5	5
Protection	123	116	119	132	134	126	131	129	123	121	122	118
Rehabilitation	118	135	149	146	158	158	165	179	180	174	174	172
Speech Therapy	225	223	226	224	223	228	218	226	243	243	237	226
Visiting Homemaker	390	413	434	448	469	479	463	459	424	436	464	441
Other	0	0	0	0	0	0	0	0	0	0	0	0
Total Services	6,585	6,844	6,977	6,936	6,869	6,773	6,723	6,765	6,768	6,854	7,065	7,144
Total Caseload	5,797	5,825	5,926	5,881	5,817	5,674	5,714	5,771	5,771	5,850	6,059	6,120
Refusals	28	21	27	43	34	17	36	31	25	43	42	34
One Month Only	N/A	250	259	217	264	238	258	294	293	296	339	332
Intake Reviews	9	8	6	6	4	4	3	3	2	2	3	2

Source: P.E.I. Department of Health and Social Services, Special Services Division

TABLE 51

CRIME STATISTICS

Offenses	Actual Offenses				Offenses Cleared by Charge			
	1977	1978	1979	1980	1977	1978	1979	1980
Murder & Homocide	1	2	0	0	1	2	0	0
Rape & Other Sexual Offenses	10	14	21	18	7	7	9	7
Wounding, Assault & Attempted Murder	223	228	277	256	61	38	73	66
Robbery	6	2	3	5	3	2	3	1
Break & Enter	451	402	516	586	130	94	151	27
Theft of Motor Vehicle	86	107	97	133	25	19	36	19
Theft over \$200	139	204	170	188	21	31	29	18
Theft under \$200	882	844	894	1,045	136	121	111	142
Possession of Stolen Goods & Frauds	276	141	227	187	120	29	81	91
Possession of Offensive Weapons	43	49	25	30	15	13	12	20
Other Criminal Code	1,412	1,397	1,646	1,794	220	190	284	282
Federal Statutes	274	188	174	110	241	164	113	74
Provincial Statutes	3,007	3,265	3,010	2,713	2,645	2,888	2,754	2,484
Municipal By-Laws	7	10	12	9	—	11	2	0
Narcotic & Food and Drug Act Violations	179	186	267	370	102	97	156	239
Total	6,996	7,039	7,341	7,446	3,721	3,706	3,814	3,638

Source: R.C.M.P. "L" Division

TABLE 52

PERSONS HELD IN PRINCE EDWARD ISLAND JAILS

	Lock-Ups				Remand				Sentenced			
	1978	1979	1980	1981	1978	1979	1980	1981	1978	1979	1980	1981
<u>Sleepy Hollow Correctional Centre²</u>												
Male	1,062	1,000	1,009	1,150	63	114	90	107	370	729	774	653
Female	34	30	28	55	7	6	3	6	6	15	29	14
Juvenile ¹	6	5	9	5	—	—	—	0	—	—	—	0
Total	1,102	1,035	1,046	1,210	70	120	93	113	376	744	803	667
<u>Prince County</u>												
Male	1,061	972	947	852	80	58	33	46	288	140	42	181
Female	38	41	29	34	—	3	1	2	9	—	—	5
Juvenile ¹	7	18	14	16	—	—	—	0	—	3	—	0
Total	1,106	1,031	990	904	80	61	34	48	297	143	42	186
<u>Kings County</u>												
Male	362	348	327	325	19	3	—	1	166	64	31	24
Female	1	8	21	20	—	—	—	0	—	—	—	1
Juvenile ¹	1	1	—	1	—	—	—	0	—	—	—	0
Total	364	357	348	346	19	3	—	1	166	64	31	25
Grand Total	2,572	2,423	2,384	2,460	169	184	127	162	839	952	876	878

1 Figures given do not indicate male or female lockups.

2 As of 13 February 1979, Queens County jail was closed and prisoners from Queens County were held in Sleepy Hollow Correctional Centre.

Source: P.E.I. Department of Justice

TABLE 53

ENTRIES UNDER THE SUPREME COURT
FISCAL YEAR ENDED MARCH 31

Fiscal Year	Cases	Liens	Chattel Mortgages	Book Debts	Judgments	Divorces
1975	1,603	4,141	7,771	586	702	130
1976	1,568	4,370	8,686	1,147	811	164
1977	1,781	4,952	10,141	853	884	173
1978	1,715	5,954	13,623	1,009	966	166
1979	2,092	5,510	14,432	1,160	1,034	220
1980	1,971	5,166	13,605	1,391	955	194
1981	2,446	5,660	12,572	1,317	1,182	210

Source: Supreme Court Law Courts, P.E.I.

TABLE 54

PROVINCE OF PRINCE EDWARD ISLAND REVENUE (\$)
YEARS ENDED MARCH 31, 1979, 1980 AND 1981, PUBLIC ACCOUNTS

	1979	1980	1981
Government of Canada			
Equalization (note 1)	\$68,664,000	\$80,426,000	\$89,999,000
Subsidies	658,982	658,982	658,982
Development Plan	20,092,959	20,274,082	19,519,740
Manpower Training	3,171,902	3,490,283	3,899,829
Canada Assistance Plan	9,978,291	10,267,857	12,470,060
Established Programs Financing ³	23,087,002	28,557,197	28,347,342
Other	<u>6,202,556</u>	<u>6,518,398</u>	<u>8,574,238</u>
Total	\$131,855,692	\$150,192,799	\$163,469,191
Percent Increase over Previous Year	15.2%	13.9%	8.8%
Provincial Government			
Taxes and Revenue Guarantee	\$83,617,898	\$92,384,093	\$104,636,914
Licenses, Permits & Fees	9,592,345	8,660,773	9,526,019
Liquor Control Commission	6,688,569	7,506,780	7,819,512
Fines and Penalties	523,001	501,681	471,831
Miscellaneous Rents	134,681	133,167	185,911
Other (note 2)	<u>9,732,010</u>	<u>13,248,332</u>	<u>18,581,570</u>
Total	\$110,288,504	\$122,434,826	\$141,221,757
Percent Increase over Previous Year	16.0%	11.0%	15.3%
Total Revenue Received	<u>\$242,144,196</u>	<u>\$272,627,625</u>	<u>\$304,690,948</u>
Percent Increase over Previous Year	15.6%	12.6%	11.8%
Note 1 (1981)			
Payments for Fiscal 1980/81	\$88,026,000		
Adjustments: 1977-78	(3,000)		
1978-79	(87,000)		
1979-80	<u>1,836,000</u>		
	\$89,772,000		
Reciprocal Taxation Agreement	<u>227,000</u>		
	<u>\$89,999,000</u>		
Note 2 (1981)			
Sales (Excluding Liquor Control Act)	\$3,560,014		
Investment Interest	<u>15,021,556</u>		
	<u>\$18,581,570</u>		

3 1979, 1980 and 1981 figures for Post-Secondary Education, Hospital Insurance Agreement and Medicare are included in Established Programs Financing.

Note: Figures given are for operational revenue, they do not include Capital Assets.

Source: Department of Finance, Accounting Services

TABLE 55

**PROVINCE OF PRINCE EDWARD ISLAND EXPENDITURES (\$)
YEARS ENDED MARCH 31, 1979, 1980, AND 1981, PUBLIC ACCOUNTS**

	1979	1980	1981
Department of Agriculture and Forestry	\$ 13,741,927	\$ 15,516,983	\$ 17,717,771
P.E.I. Land Development Corporation	974,433	1,142,352	917,791
P.E.I. Grain Elevators Corporation	262,005	315,499	
Department of Community Affairs	6,824,416	6,138,277	11,712,014
Land Use Commission	78,190	74,357	77,390
Department of Development	1,195,981	1,281,350	
Department of Education	64,552,670	70,408,969	79,176,473
Department of Environment	1,919,305	1,999,592	
Department of Tourism, Parks & Conservation	3,760,622	4,050,655	
Department of Industry & Commerce	2,570,791	3,701,070	
Department of Tourism, Industry & Energy			5,806,615
Executive Council	635,428	644,358	655,897
Policy and Priorities Board			311,452
Department of Finance	2,888,597	3,253,942	3,665,676
Department of Fisheries	2,245,924	2,295,930	2,570,673
Department of Health	12,218,062	12,674,899	
Department of Social Services	24,823,077	28,056,529	
Department of Health & Social Services			49,134,329
Hospital Services Commission	25,351,249	28,673,321	35,886,413
Health Services Commission	9,447,024	10,028,743	11,597,302
P.E.I. Addiction Foundation	1,703,676	1,832,718	
Market Development Centre	950,217	1,165,975	1,184,019
P.E.I. Lending Authority	485,764	753,958	730,526
Industrial Enterprises Inc.	7,975,538	5,343,933	5,774,449
P.E.I. Energy Corporation		92,926	320,019
Department of Justice and Attorney General	4,391,551	5,258,833	6,108,990
Department of Labour	4,322,851	3,943,760	4,700,952
Legislation	805,317	881,134	838,112
Department of Provincial Secretary	1,838,139	2,004,023	
Rentalsman	41,716	52,001	56,361
Department of Highways	14,276,001	15,311,896	
Department of Public Works	6,267,439	7,140,702	
Department of Highways and Public Works			30,094,283
Other Current Expenditures	6,211,473	10,851,551	6,210,207
Debt Charges	21,406,982	26,546,840	34,362,089
P.E.I. Housing Corporation	3,414,369	3,126,219	2,210,568
	<u>\$ 247,580,734</u>	<u>\$ 274,563,295</u>	<u>\$ 311,820,371</u>
Percent Increase (Decrease)	15.1%	10.9%	13.6%
Surplus (Deficit)	(\$5,436,538)	(\$1,935,670)	(\$7,129,423)

Note: Due to the government reorganization the expenditure figures for the individual Departments are not comparable over time. The schedule of reclassification of the 1979-80 expenditures to conform to the 1980-81 presentation is contained in the appendix in the P.E.I. Estimates of Revenue and Expenditure, for the fiscal year ending March 31st, 1981.

Source: Department of Finance, Accounting Services

TABLE 56

**REVENUES AND EXPENDITURES BY ALL LEVELS OF GOVERNMENT
NATIONAL ACCOUNTS BASIS, 1975-1980 P.E.I.
(\$ MILLION)**

<u>Expenditures</u>	<u>1975</u>	<u>1976</u>	<u>1977</u>	<u>1978</u>	<u>1979</u>	<u>1980</u>
Federal						
Current Expenditures	57	75	86	92	98	105
Transfers to Persons	83	95	111	123	126	136
Subsidies & Assistance	49	39	45	50	52	92
Interest on Debt	11	12	15	16	18	22
Transfers to Government	109	129	133	147	153	175
Capital Expenditure	5	4	3	8	7	6
Capital Consumption Allowance	-7	-8	-8	-9	-10	-10
Canada Pension Plan	3	5	6	7	9	11
Total (1)	<u>310</u>	<u>351</u>	<u>391</u>	<u>434</u>	<u>453</u>	<u>537</u>
Provincial, Municipal, Hospitals						
Current Expenditure	129	157	173	194	211	241
Transfers to Persons	20	22	27	37	40	47
Subsidies & Assistance	4	4	4	6	7	8
Interest on Debt	14	16	17	18	22	23
Capital Expenditure	32	19	28	40	54	56
Capital Consumption Allowance	-12	-14	-15	-16	-19	-21
Total (2)	<u>187</u>	<u>204</u>	<u>234</u>	<u>279</u>	<u>315</u>	<u>354</u>
Revenues						
Federal - Total (3) *	<u>79</u>	<u>94</u>	<u>97</u>	<u>102</u>	<u>113</u>	<u>131</u>
Provincial, Municipal, Hospitals						
Federal Transfers (4)	109	129	133	147	153	175
Taxes & Other Revenues (5)	<u>79</u>	<u>86</u>	<u>102</u>	<u>114</u>	<u>127</u>	<u>148</u>
Total	<u>188</u>	<u>215</u>	<u>235</u>	<u>261</u>	<u>280</u>	<u>322</u>
Own Source Revenues (3) + (5)	158	180	199	216	240	279
Total Expenditure (1) + (2) - (4)	<u>388</u>	<u>426</u>	<u>492</u>	<u>566</u>	<u>615</u>	<u>716</u>
Overall (Deficit)	(230)	(246)	(293)	(350)	(375)	(437)

* Principally Direct and Indirect Taxes

Source: Statistics Canada 13-213

TABLE 57

FEDERAL GOVERNMENT EMPLOYMENT AND PAYROLL IN P.E.I.

Year Quarter	General Government		Federal Government Enterprise	
	Total Payroll (\$'000)	Average Number of Employees	Total Payroll (\$'000)	Average Number of Employees
1975				
Jan. - March	3,506	1,459	2,419	863
Apr. - June	4,396	1,572	2,607	905
July - Sept.	4,435	1,743	3,374	1,040
Oct. - Dec.	n/a	1,626	3,070	910
Total	n/a	1,600	11,470	930
1976				
Jan. - March	4,465	1,614	2,537	893
Apr. - June	9,184	2,661	3,082	919
July - Sept.	8,853	2,782	4,137	1,008
Oct. - Dec.	9,625	2,651	2,792	885
Total	32,127	2,427	12,548	926
1977				
Jan. - March	9,156	2,691	3,462	897
Apr. - June	10,477	2,761	3,280	989
July - Sept.	11,061	2,894	3,963	1,040
Oct. - Dec.	9,895	2,781	3,101	911
Total	40,589	2,782	13,806	959
1978				
Jan. - March	10,891	2,809	3,638	906
Apr. - June	10,466	2,918	3,448	941
July - Sept.	11,494	2,987	4,041	998
Oct. - Dec.	10,217	2,724	3,247	885
Total	43,068	2,860	14,374	933
1979				
Jan. - March	11,207	2,667	3,702	868
Apr. - June	10,676	2,781	3,821	910
July - Sept.	12,090	2,852	4,428	999
Oct. - Dec.	10,949	2,660	3,570	885
Total	44,922	2,740	15,521	916
1980				
Jan. - March	12,114	2,670	4,250	854
Apr. - June	11,919	2,794	3,777	854
July - Sept.	13,219	2,821	4,503	944
Oct. - Dec.	12,073	2,712	3,676	846
Total	49,325	2,749	16,206	875
1981				
Jan. - March	13,241	2,689	4,894	859
Apr. - June	13,289	2,801	4,392	835
July - Sept.	15,742	3,053	4,001	869
Oct. - Dec.	14,741	2,896	4,536	810
Total	57,013	2,860	17,850	843

Source: Statistics Canada 72-004

TABLE 58
PROVINCIAL GOVERNMENT EMPLOYMENT

	Classified Employees		Unclassified Employees		Total Employees	
1977	2,415		1,126		3,541	
1978	2,383		1,183		3,566	
1979	2,430		1,253		3,683	
1980	2,467		1,371		3,838	
1981	Full-time	Part-time	Full-time	Part-time	Full-time	Part-time
Agriculture and Forestry	172	3	72	2	244	5
Community Affairs	98		28	1	126	1
Education	65	1	29	33	94	34
Finance	133		6		139	
Fisheries	25		5		30	
Health & Social Services	999	62	326	164	1,325	226
Highways & Public Works	429		366	1	795	1
Justice & Attorney General	114		51	1	165	1
Labour	32		3	12	35	12
Tourism, Industry & Energy	24		30		54	
Civil Service Commission	18	1	2	2	20	3
Energy Corporation	1		2		3	
Executive Council	4		8		12	
Hospital & Health Services Comm.	67		4		71	
Housing Corporation	49		8		57	
Land Development Corporation	9		1		10	
Land Use Commission	1		2		3	
Lending Authority	16		3		19	
Liquor Control Commission	84		50		134	
Milk Commission	2		1		3	
Policy & Priorities Board	3		4		7	
Office of the Provincial Auditor						
General	15		3		18	
Public Utilities Commission	7		1		8	
Rentalsman						
Treasury Board	8		2		10	
Workers Compensation Board	14		3		17	
Total	<u>2,389</u>	<u>67</u>	<u>1,010</u>	<u>216</u>	<u>3,399</u>	<u>283</u>

Note: Prior to 1980 comparable figures by department/agency are not available due to the government reorganization. Figures are recorded as of December each year.

Source: Civil Service Commission

TABLE 59

LOCAL GOVERNMENT STATISTICS

Calendar Year	Number of Incorporated Municipalities	Grants		Principal Amounts Outstanding			
		Per Capita Grant ¹ (\$'000)	Fire-Fighting Assistance Grants (\$'000)	Debentures Gauranteed (\$'000)	Bank Credits Gauranteed (\$'000)	S.T.P. ¹ Loans (\$'000)	M.D.L. ² Loans (\$'000)
1975	35	1,500.0	23.3	3,729.4	116.4	3,656.9	293.2
1976	36	1,700.0	17.3	4,390.4	605.5 ³	4,311.3	579.1 ²
1977	37	1,760.0	16.2	3,756.4	292.4	3,771.0	560.1
1978	38	1,940.0	22.3	3,158.3	284.2	2,180.0	526.1
1979	38	1,980.0	25.0	4,139.6	405.4	1,598.8	490.2
1980	38	2,340.0	45.0	N/A	N/A	N/A	N/A

N/A Not available at the time of this publication.

1 Sewage treatment plant loans.

2 Prior to 1976, two large loans to City of Charlottetown were omitted (now included) from Municipal Development Loan Board (M.D.L.)

3 Outstanding amount as of 31 December 1976.

Source: P.E.I. Department of Community Affairs