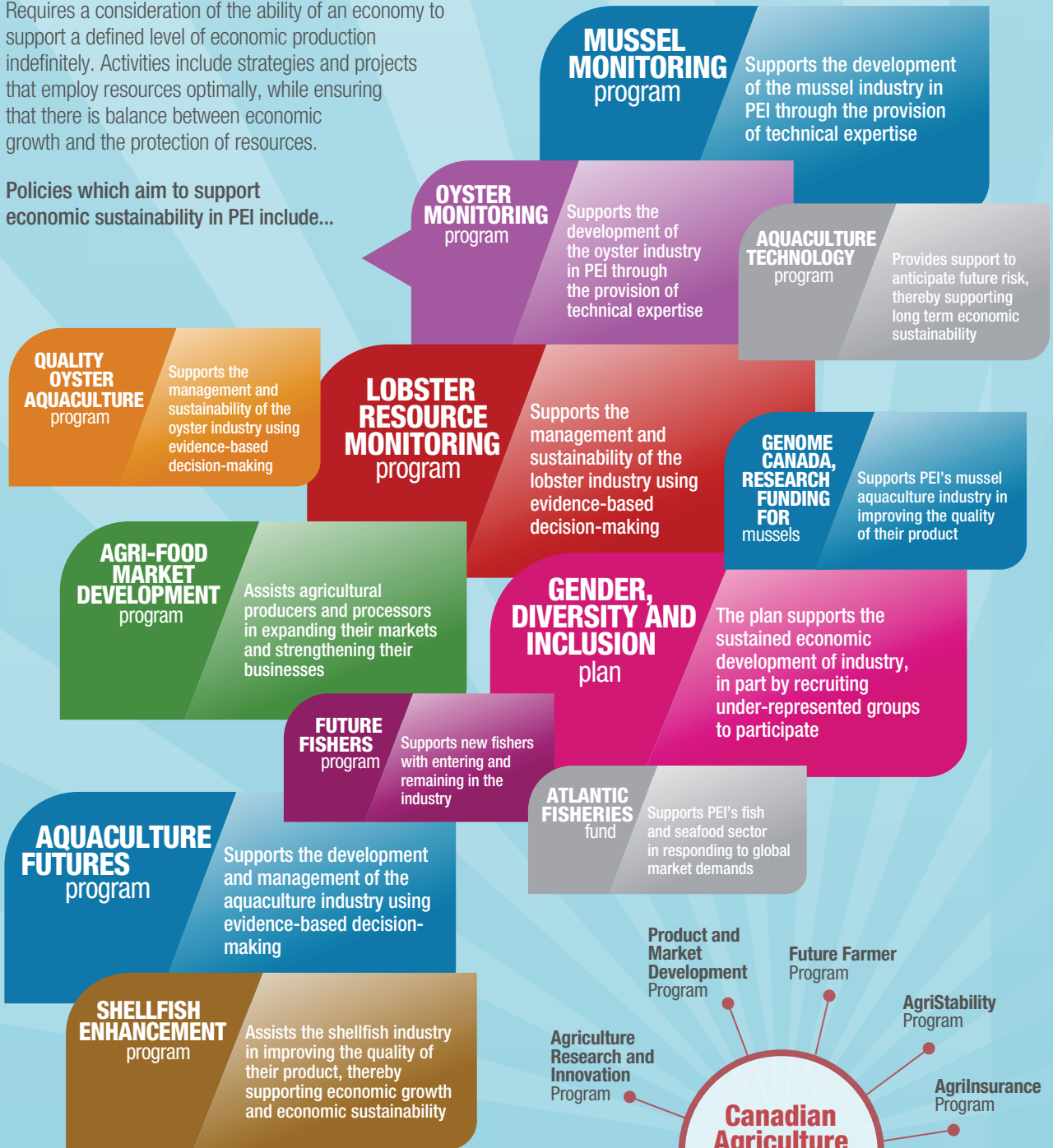


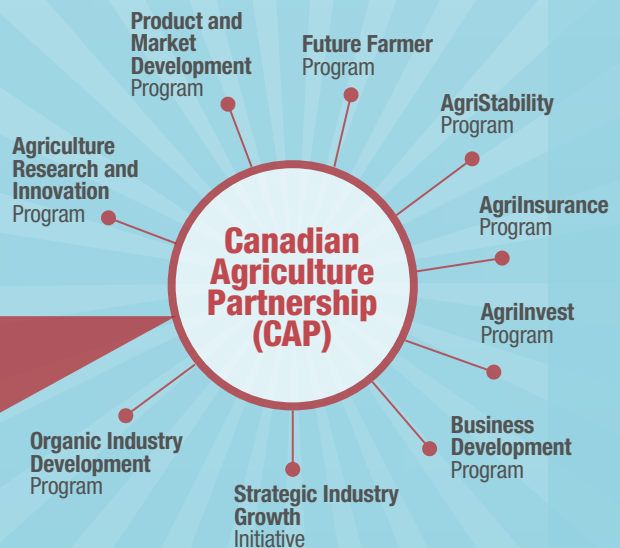
ECONOMIC SUSTAINABILITY

Requires a consideration of the ability of an economy to support a defined level of economic production indefinitely. Activities include strategies and projects that employ resources optimally, while ensuring that there is balance between economic growth and the protection of resources.

Policies which aim to support economic sustainability in PEI include...



NINE PROGRAMS UNDER THE CAP DIRECTLY AIM TO SUPPORT THE ECONOMIC SUSTAINABILITY of agriculture in pei



ORGANIZATIONAL SUSTAINABILITY

Activities and processes required for organizations to maintain themselves through time. This can range from identifying risks and opportunities in a timely manner, changing elements of production or service delivery to be more efficient or effective, or improving human resources practices.

Policies which aim to support organizational sustainability in PEI include...

FUNDING FOR THE PEI AQUACULTURE ALLIANCE
Funding supports core operations

FUNDING FOR THE PEI SHELLFISH ASSOCIATION
Funding supports core operations

MUSSEL MONITORING program
Provides assistance to mussel growers in the management of operations

OYSTER MONITORING program
Provides assistance to oysters growers in the management of operations

ATLANTIC FISHERIES fund
Supports fisheries and aquaculture businesses with operational efficiency and effectiveness

AGRISTABILITY, AGRINSURANCE, AGRINVEST programs
Programs support agri-producers in managing operational risks

AGRICULTURE RESEARCH & INNOVATION program
Provides assistance to commodity organizations to maintain knowledge transfer services

FUTURE FISHERS program
Provides assistance in the management of operations for new entrants in the lobster industry

FUNDING FOR WOMEN'S INSTITUTE
Funding supports core operations

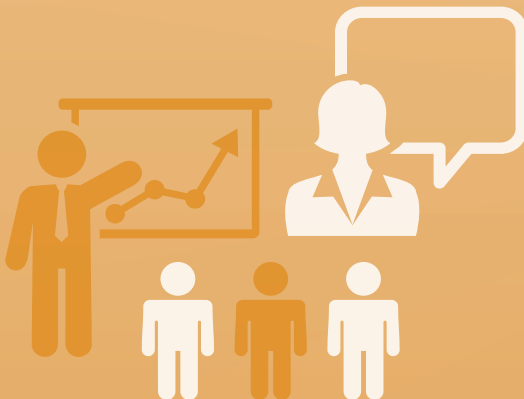
FUNDING FOR FOOD ISLAND PARTNERSHIP
Funding supports core operations

POLICY CAPACITY DEVELOPMENT & MENTORSHIP program
Aims to develop a future generation of policy leaders in the public service

FUTURE FARMER PROGRAM
Provides assistance in the management of operations for new entrants in agriculture.

FUNDING FOR 4-H
Funding supports core operations

GENDER, DIVERSITY AND INCLUSION plan
Aims to encourage inclusive practices at the DAF thereby supporting organizational innovation



SOCIAL SUSTAINABILITY

Involves the provision of equitable access to public goods and services to all persons regardless of gender, race, ability, age, etc. It also aims to improve quality of life, especially for disadvantaged groups. Finally, social sustainability requires that economic development in the present day not endanger or diminish the ability of future generations to provide for their needs, maintain their health, and enjoy their lives.

Policies which aim to support social sustainability in PEI include...

GENDER, DIVERSITY AND INCLUSION plan

Aims to encourage the participation of under-represented groups in agriculture, aquaculture, and fisheries in part by identifying root-cause issues of marginalization

FUNDING FOR 4-H

Funding supports youth participation in agriculture

FARMER ASSISTANCE program

Provides confidential, professional counselling services to farmers, farm employees and their families.

FUNDING FOR WOMEN'S INSTUTUTE

Funding supports social connections among women in agriculture

COMMUNITY FOOD SECURITY & AGRICULTURE AWARENESS program

Aims to encourage under-represented groups' access to the local food system

PUBLIC TRUST program

Aims to encourage cross-sectoral and community connections to facilitate agriculture information sharing



ENVIRONMENTAL SUSTAINABILITY

Involves processes of the natural world, and the impact of human activity on renewable and non-renewable resources. Environmental sustainability considers the way humans relate to the natural world, and includes a variety of environmental ethics and the proper management of healthy ecosystems.

Policies which aim to support environmental sustainability in PEI include...

QUALITY OYSTER AQUACULTURE program
Aims to maintain the long term sustainability of the environment in which growers operate, at minimal environmental costs

OYSTER MONITORING program
Collects environmental data, which is used to support best management practices and ecosystem monitoring

MUSSEL MONITORING program
Collects environmental and biological data, which is used to support best management practices and ecosystem monitoring

AQUACULTURE TECHNOLOGY program
Projects which aim to support the long term sustainability of the aquaculture ecosystem are eligible for funding

LOBSTER RESOURCE MONITORING program
Collects biological data, which is used to support the management and long term sustainability of the lobster industry

AGRICULTURE STEWARDSHIP program
Supports producers to implement beneficial management practices that lead to improved environmental outcomes related to resource conservation and the health of island ecosystems

ENVIRONMENTAL FARM PLANS
Encourages producers to understand and plan for the implementation of improved production practices that support resource conservation and the health of island ecosystems

ALTERNATIVE LAND USE SERVICES program
Encourages producers to implement beneficial management practices or remove environmentally sensitive land from agricultural production that could lead to improved resource use and healthier ecosystems

PERENNIAL CROP DEVELOPMENT program
Supports environmental sustainability through encouraging the establishment of perennial crops to improve resource use; such as through soil conservation and improved water and nutrient use efficiency

