



2022 PEI ANNUAL COVID-19 SUMMARY

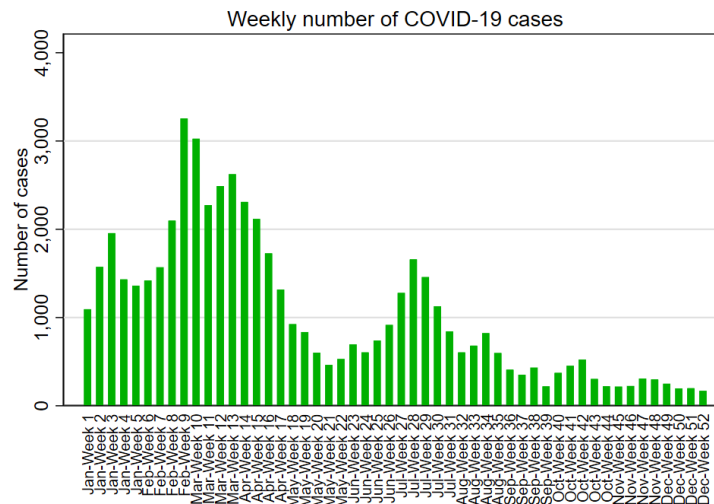
CHIEF PUBLIC HEALTH OFFICE

SUMMARY

- In 2022, a total of 54,179 cases of COVID-19 were detected by lab-based RT-PCR or rapid NAAT (Abbott ID Now and Lucira) testing in PEI (total does not include individuals who tested positive on a rapid antigen test).
- The median age of cases was 39.9 years, with 52.7% being female.
- In total, there were 355 hospitalizations, including 29 ICU admissions, and 81 deaths. The rate of hospitalizations and deaths was highest among those aged 80+ years.
- There were 125 COVID-19 outbreaks declared in 2022, with 78.4% occurring in long-term care and community care facilities.
- According to data from Canadian Blood Services, infection-acquired or vaccine-induced seroprevalence (i.e., hybrid immunity) in PEI was >99% by the end of 2022.¹

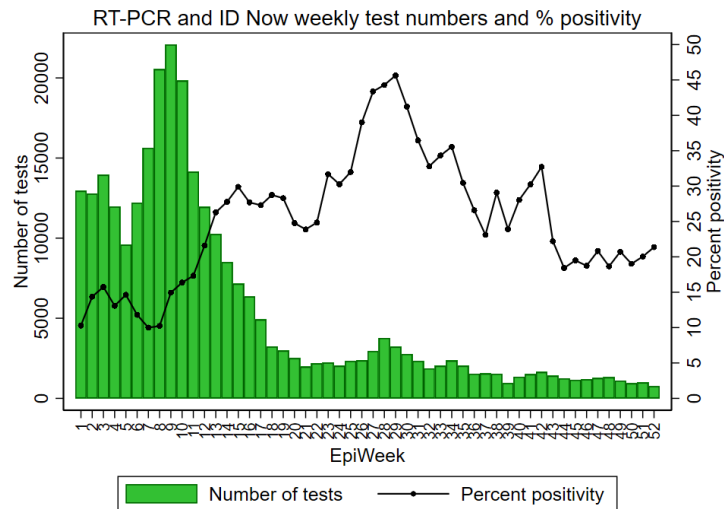
FIGURE 1. EPIDEMIOLOGICAL CURVE

The Omicron variant (B.1.1.529) was detected in PEI in January 2022 and quickly became the dominant strain leading a rapid increase in COVID-19 cases. COVID-19 case detection peaked in late February with smaller peaks occurring in mid-January, late March, mid-July, and late October. By late October, COVID-19 detections stabilized and were relatively low compared to the previous months. The median age of cases was 39.9 years, ages ranged from <1 to >100 years, and 52.7% of cases were diagnosed in females.



¹ Canadian Blood Services COVID-19 Seroprevalence Report #28. February 2, 2023. Available from: <https://www.covid19immunitytaskforce.ca/wp-content/uploads/2023/02/covid-19-full-report-december-2022-february-2023.pdf>. Accessed June 12, 2023.

FIGURE 2. COVID-19 TEST NUMBERS AND PERCENT POSITIVITY



COVID-19 CASES IN 2022

Table 1. COVID-19 cases detected by RT-PCR, Abbott ID Now and Lucira in 2022

COVID-19 Cases	Positive RT-PCR	Positive ID Now or Lucira rapid NAAT	Total
	3,310	50,869	54,179

COVID-19 OUTBREAKS IN 2022

Table 2. COVID-19 outbreaks by outbreak setting in 2022

COVID-19 Outbreaks	Long-term care / community care	Other setting ¹	Total
	98	27	125

¹ For example, acute care facilities and correctional facilities

An outbreak is defined as 2 or more confirmed cases of COVID-19 which are epidemiologically linked to a specific setting or location.

SEVERE OUTCOME SURVEILLANCE IN 2022⁴

Table 3. COVID-19 hospitalizations, intensive care unit (ICU) admissions, and deaths in 2022

COVID-19 Severe Outcomes	Hospitalizations ²	ICU ²	Deaths ³
	355	29	81

² Received treatment in hospital as a result of COVID-19

³ A death due to COVID-19 may be attributed when COVID-19 is the cause of death or is a contributing factor.

⁴ Based on date reported to the Chief Public Health Office.

Hospitalization data is gathered through infection prevention and control practitioners at each Island hospital. There were 355 hospitalizations for COVID-19, which included 29 ICU admissions, in 2022. The median age of hospitalized patients was 76 years (average: 70 years), and the range was <1 to >90 years. Fifty-eight percent (58%) of hospitalized patients were male.

Table 4. COVID-19 hospitalizations and death rates by age group in 2022

Age Group	Number	Crude rate per 100,000 population
HOSPITALIZATIONS		
< 5 years	15	204.2
5 to 19 years	9	33.1
20 to 59 years	41	45.6
60 to 79 years	154	398.7
80+ years	136	1,773.4
DEATHS		
<59 years	6	4.8
60 to 79 years	26	67.3
80+ years	49	638.9

HISTORICAL DATA⁵

Year	Total Cases	Hospitalized	ICU	Deaths
2021	1,413	5	1	0
2020	96	0	0	0

⁵Based on date reported to the Chief Public Health Office.