

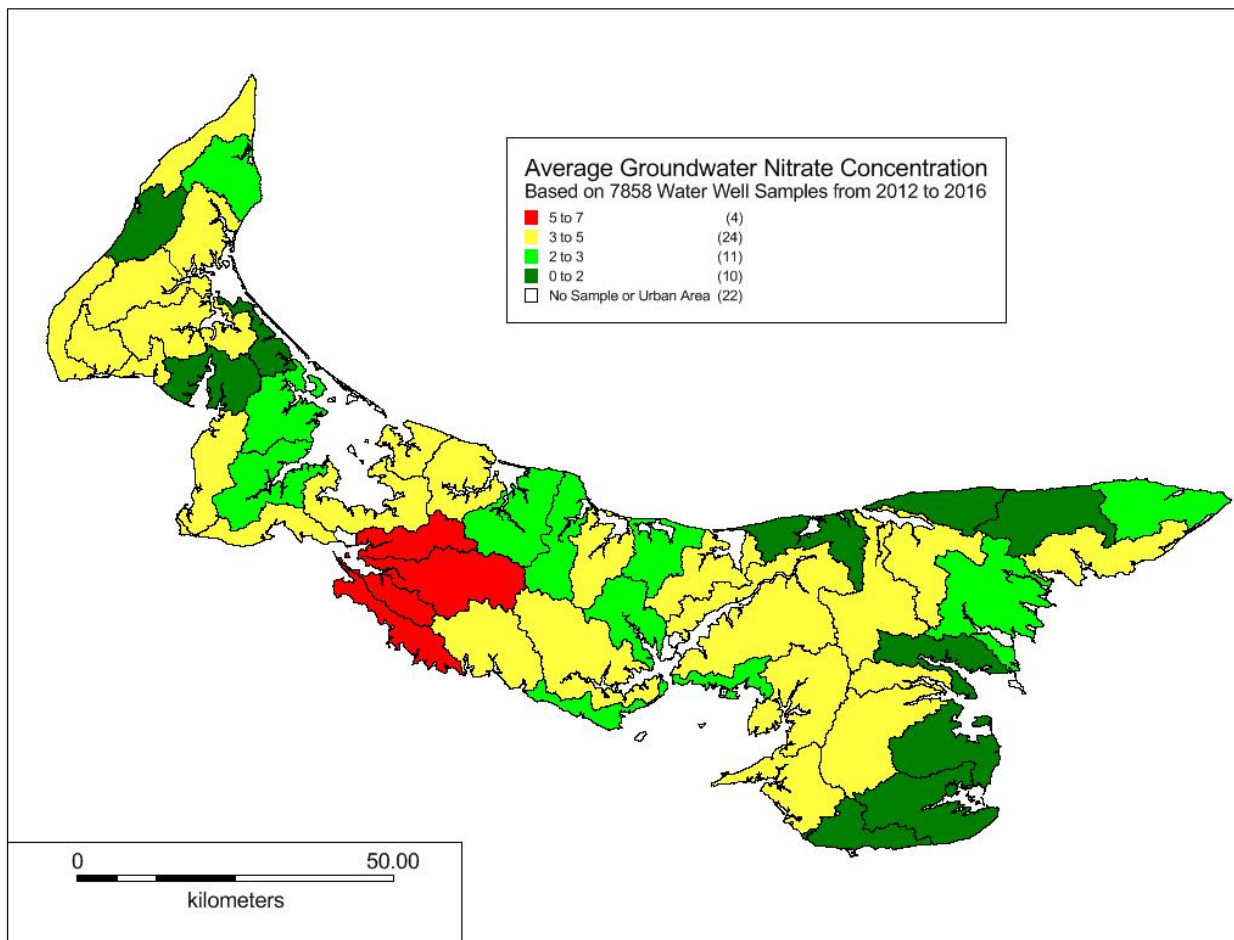
Groundwater Nitrate Concentration Map

The maps below show the average groundwater nitrate concentrations of PEI watersheds. The first map was created from private well water samples from 2012 to 2016 and the second from 2000 to 2005.

Nitrate in groundwater is highly variable within a watershed. Individual drinking water wells may be much lower or higher than shown on the map. Differences can be due to the depth of the well, length of the well casing and the distance to sources. The only way to know the nitrate concentration in an individual well is to test the water from that well.

Nitrate is found naturally at low levels in groundwater. Higher concentrations on P.E.I. can result from human activities. The dominant source of added nitrate is from row crops such as potatoes, but septic systems, livestock and manure are also contributors.

2012 to 2016



Comparisons between the two maps should be done with care. Averages for watersheds with low numbers of samples may be less reliable than those watersheds that have larger numbers of samples. Also, a change from one category level to another may reflect a very small change in value which might be due to the different wells that happened to be sampled in a watershed in the two time frames rather than a significant change in overall concentration of nitrate in the groundwater in that watershed.

2000 to 2005

