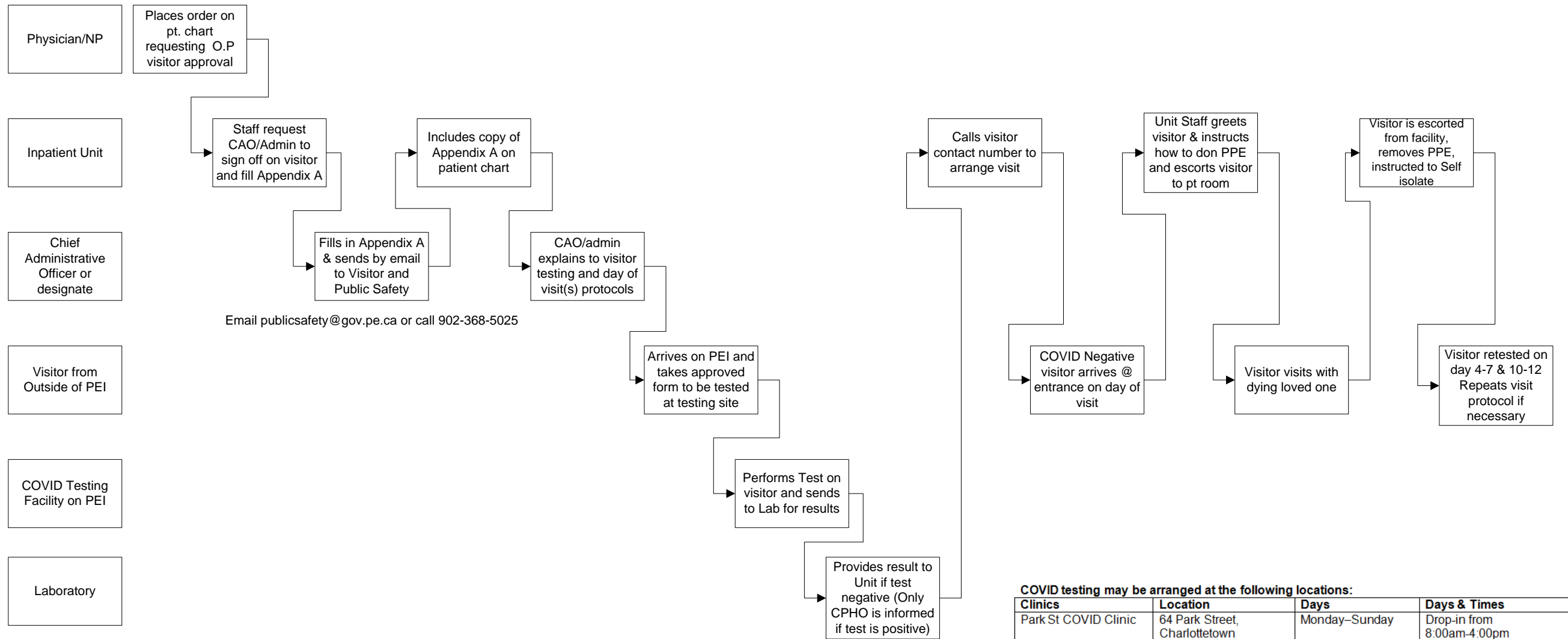


Process for Family Members arriving from Outside of PEI (O.P) to visit end of life patient - Inpatient Setting

November 23, 2020



COVID testing may be arranged at the following locations:

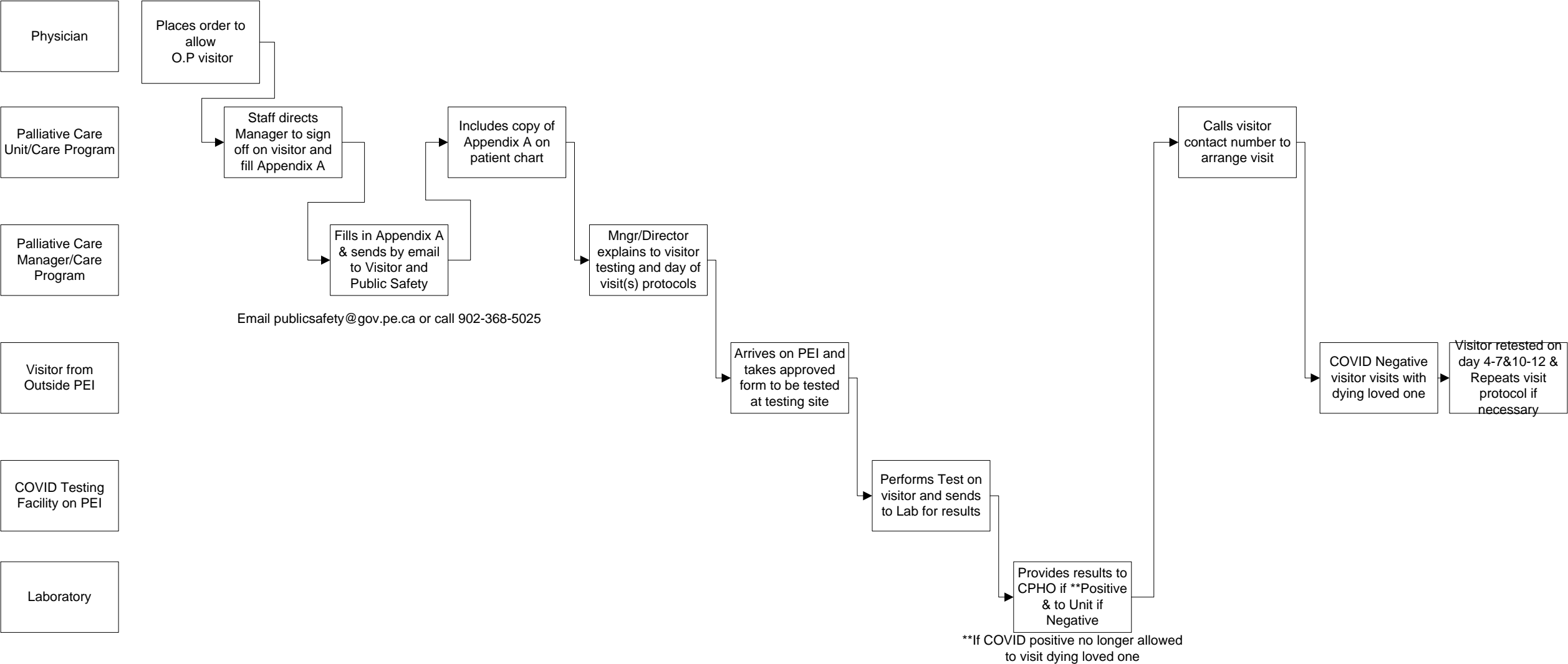
Clinics	Location	Days	Days & Times
Park St COVID Clinic	64 Park Street, Charlottetown	Monday–Sunday	Drop-in from 8:00am-4:00pm
Slemon Park COVID Clinic	40 Aerospace Blvd, Slemon Park	Monday–Sunday	Drop-in from 8:00am-4:00pm
Island EMS	229 Sherwood Rd, Charlottetown	Monday- Sunday	Prearranged time only 7:00am- 8:00am and 4:00pm to 6:30pm

- Testing outside of these hours must be completed by the facility/unit/program giving approval for the visitor to attend the site.

**If COVID positive no longer allowed to visit dying loved one

Process for Family Members arriving from Outside of PEI (O.P) to visit end of life patient - Palliative Care

November 23, 2020



Physician

Palliative Care Unit/Care Program

Palliative Care Manager/Care Program

Visitor from Outside PEI

COVID Testing Facility on PEI

Laboratory