

# Prince Edward Island Guidelines for Infection Prevention and Control of COVID-19 in Community Care Facilities

---

May 28, 2021

**Department of Health and Wellness**  
**Chief Public Health Office**



# Contents

Executive Summary .....	1
Introduction .....	2
Infection Prevention and Control (IPC) Measures.....	2
Routine Practices .....	2
IPC Preparedness for COVID-19 .....	4
Screening.....	7
Outbreak Management .....	9
Implementation of Control Measures .....	10
Declaring the Outbreak Over.....	12
Discontinuing Additional Precautions .....	12
Handling of Deceased Bodies .....	12
Bibliography .....	13
Appendix A - Hand Hygiene .....	15
Appendix B - How to Fit-Check a N95 Mask .....	17
Appendix C - Point of Care Risk Assessment Tool for COVID-19 .....	18
Appendix D - Donning and Doffing PPE.....	20
Appendix E - Line List Information on Residents and Staff with Symptoms of COVID-19 .....	21

## ***Executive Summary***

This document provides foundational guidance specific to the COVID-19 pandemic in Community care facilities (CCFs).

Individuals responsible for policy development, implementation and oversight of infection prevention and control measures at specific CCFs should be familiar with relevant infection prevention and control (IPC) background documents on routine practices and additional precautions and occupational health and safety legislation. The term “staff” is intended to include anyone working in CC having interactions with residents, including but not limited to health care workers. The term “visitor” is intended to include anyone who is not employed directly by the CC home but has been permitted entry into the facility.

Important measures to prevent introduction and spread of COVID-19 in CCF:

- All staff must be trained on infection control measures such as Routine Practices, including proper hand hygiene (**Appendix A**), **point-of-care risk assessment (PCRA)** and the importance of maintaining a 2 metre spatial distance between resident cohorts.
- All staff must work to identify suspect or confirmed cases of COVID-19 as early as possible in staff or residents.
- All staff will use Droplet and Contact Precautions, in addition to Routine Practices, for all care of residents with suspected or confirmed COVID-19.
- Facility management must identify all staff who work in more than one location (e. g LTC facilities, acute care and/or community care) and ensure efforts are made to prevent this *where possible*, to limit spread between facilities and to inform investigations during an outbreak.
- If this is not possible:
  - Staff working in Community Care and LTC will be tested weekly for COVID-19.
  - If there is a COVID-19 case in a facility, staff employed in more than one healthcare facility should not move from a COVID-19 outbreak facility to a non-COVID-19 outbreak site.
- All CC staff returning from out of province travel will be required to self-isolate according to current Public Health measures.
- Visitor restriction policies are in place to reduce the risk of introduction and transmission of COVID-19. Visitors may also be admitted for compassionate reasons (e.g. end of life). Visitor restrictions may be reassessed and adjusted according to the epidemiology of COVID 19 in the community.
- Dual CC and LTC facilities will refer to the PEI Guidelines for Infection Prevention and Control of COVID-19 in Long Term Care Facilities for guidance and management of COVID -19.

## ***Background***

In December 2019, a cluster of cases of pneumonia of unknown origin was reported from Wuhan, Hubei Province in China. On January 10, 2020, a novel coronavirus, that causes a disease now referred to as COVID-19 was identified as the cause of this cluster of pneumonia cases. A global pandemic was declared on March 11, 2020.

COVID-19 is a virus belonging to the family of Coronaviruses. Illness can be mild like the common cold but can also be more severe including pneumonia and death. Current evidence indicates that our long term care population is at increased risk due to advanced age, chronic health conditions and the ease of transmission among the institution's environment.

Long term care facility residents are vulnerable to infection with COVID-19 due to behavioral factors, shared spaces, and transit to other healthcare facilities. Older adults and those with pre-existing medical conditions are also at risk for more severe disease and have higher mortality when infected with COVID-19.

## ***Introduction***

Infection prevention and control (IPC) strategies to prevent or limit transmission of COVID-19 in CC are similar to those used for the IPC of other acute respiratory infections, including:

- Prompt identification and isolation of all persons with signs and symptoms of possible COVID-19.
- Signs or symptoms may include:
  - Fever<sup>1</sup> Single temp equal to or > 38°C or feeling feverish
  - Any new or worsening respiratory symptoms (cough, shortness of breath or difficulty breathing, runny nose or sneezing, nasal congestion,, sore throat or difficulty swallowing)
  - OR
  - Any new onset non-respiratory symptoms including chills, muscle or body aches, fatigue or weakness, gastrointestinal symptoms (abdominal pain, diarrhea, vomiting),,, headache, new loss of taste or smell or other unexplained symptoms or change in clinical status.

## ***Infection Prevention and Control (IPC) Measures***

In order to prevent disease spread in CC facilities, staff must receive ongoing training, testing and monitoring of compliance with routine practices, including hand hygiene, and implementation of additional precautions, including droplet and contact precautions. Policies and procedures must be in place to prevent the introduction and control the spread of COVID-19.

### ***Routine Practices***

Routine practices apply **to all staff, residents and visitors, at all times, in all CC facilities** and include but are not limited to:

- Conducting a point of care risk assessment (PCRA)
- Hand hygiene
- Appropriate use of Personal Protective Equipment (PPE)

---

<sup>1</sup> Difficulties in measuring temperature may result in low temperature readings in some cases in which fever is actually present.

- Adhering to respiratory hygiene (i.e., covering a cough with a tissue or coughing into elbow followed by performing hand hygiene)

### **Point-of-Care Risk Assessment (PCRA)**

Prior to any resident interaction, all staff should assess the infectious risks posed to themselves, other staff, other residents and visitors during a care situation or procedure.

- The PCRA (**Appendix C**) helps staff to select the appropriate actions and/or PPE to minimize risk of exposure to known and unknown infections.
- Performing a PCRA helps to avoid misuse of PPE.

### **Hand Hygiene**

**Staff is required to perform hand hygiene (Appendix A):**

- On entry to and exit from the CC facility
- Before and after contact with a resident, regardless of whether gloves are worn
- Before preparing or administering all medications or food
- Before performing aseptic procedures
- Before putting on PPE and during removal of PPE according to facility procedure for putting on or removing PPE
- Before putting gloves on
- Before and after contact with the resident's environment (e.g. medical equipment, bed, table, door handle) regardless of whether gloves are worn
- After removing gloves
- Any other time hands are considered to be potentially contaminated (e.g. after handling blood, body fluids, bedpans, urinals, or wound dressings)
- After other personal hygiene practices (e.g. blowing nose, using toilet facilities, etc.)

**Residents should perform hand hygiene:**

- Upon entering or leaving their room
- Prior to eating, oral care, or handling of oral medications
- After using toileting facilities
- Any other time hands are considered to be potentially contaminated (e.g. after handling blood, body fluids, bedpans, urinals, or wound dressings)

Hands may be cleaned using alcohol-based-hand-rub (ABHR) containing 60-90% alcohol, or plain liquid soap and water. Washing with soap and water is preferable for use immediately after using toilet facilities, if hands are visibly soiled or when caring for a resident with diarrhea.

## **Masking**

Given the ongoing community spread of COVID-19 within Canada, and evidence of transmission from those who are pre-symptomatic or asymptomatic, universal masking for the full shift or visits for all CC staff and visitors is required. Staff must support visitors to ensure appropriate use of non-medical masks.

The rationale for universal masking of CC staff and visitors is to reduce the risk of transmitting COVID-19 infection from staff or visitors to residents when symptoms of illness may not be recognized.

- Staff will perform hand hygiene before they put on a mask when they enter CC facility.
- Staff will wear mask securely over their mouth and nose and adjust the nose piece to fit snugly while mask is worn.
- Do not touch your face or mask once your mask is securely in place (and perform hand hygiene if this occurs).

When the mask becomes wet, damp or soiled (from breathing or external splash), and at the end of shift or upon leaving the facility, a disposable mask should be discarded and a reusable mask should be removed and stored until washed. If remaining in or returning to the facility, a new mask should be donned.

## **Droplet Contact Precautions**

- Droplet and contact precautions must be implemented for all residents who are considered exposed to, diagnosed with, or presenting with signs or symptoms of COVID-19. Donning and Doffing of PPE is described in **Appendix D**.
- Gloves, a long-sleeved cuffed gown (covering front of body from neck to mid-thigh), a medical mask and face or eye protection should be worn upon entering the resident's room or when within 2 metres of the resident on droplet and contact precautions.
  - Examples of face or eye protection include full face shield that covers the front and sides of the face or well-fitting goggles; regular eyeglasses or safety glasses with gaps between glasses and the face are not sufficient protection.
- The area where PPE is donned should be separated as much as possible from the area where it is removed and discarded.
- Hand hygiene must be performed prior to putting on or removing PPE.

## ***IPC Preparedness for COVID-19***

### **CCF Operators must ensure:**

- Generate a list of staff that work at more than one health care facility and ensure that staff are tested weekly if indicated.
- **A current and up to date staff list with contact numbers is available in the event of an outbreak.**

- **Facilities shall maintain a contact-tracing record each day for each Resident to include all contacts with other persons by a Resident including Partners in Care, Designated Visitors, or any contacts in an exceptional life circumstance.**
- The importance of all staff and visitors wearing a non-medical mask on entry into and while in the facility.
- Aerosol-generating medical procedures (AGMPs)<sup>2</sup> are only performed if deemed medically necessary.
  - If AGMPs are performed,
    - There is appropriate training and N95 respirator fit-testing/fit checking (**Appendix B**) for all staff who may be required to participate in or who may be exposed to these procedures.
    - The fewest staff necessary to perform the procedure are present.
    - Entry into a room of a resident undergoing CPAP should be minimized.
    - These procedures are performed in a single room with the door closed.
- Advance directives for all residents are reviewed.
- Visitor restriction is in place in accordance with current guidance and a plan to facilitate visitation safely is developed.
- Appropriate number and placement of alcohol-based hand rub (ABHR) dispensers to allow easy access throughout the facility and at point of care.
- Environmental cleaning and disinfection practices are monitored for compliance.
- **Heating, Ventilation and air conditioning systems are properly installed and regularly inspected and maintained.**
- Physical distancing measures are utilized for all residents (e.g., use of single rooms when available, maintaining 2 metres spatial separation between residents in hallways, all recreation activities, dining and in any other communal areas). Resident cohorts must maintain physical distancing from one another.
- **Residents considered exposed to, suspected or confirmed to have COVID-19 are placed immediately on Droplet and Contact Precautions until COVID-19 or other infectious respiratory illness is ruled out, and until criteria for discontinuation of Additional Precautions are met.**
- **A resident who is suspected or confirmed to have COVID-19, or who is a close contact of a person confirmed to have COVID-19, should be cared for in a single room with a toilet and sink designated for their use.**
- **Residents who are confirmed to have COVID-19 (and not other healthcare-associated pathogens) may be cohorted in separate adequately ventilated units or areas. Wherever possible, staff should**

---

<sup>2</sup> Aerosol-generating medical procedure includes: cardio-pulmonary resuscitation, sputum induction, nebulization, non-invasive positive pressure ventilation (CPAP, BiPAP), or open suctioning.

**be dedicated to caring for these residents, in effort to reduce the risk of transmitting infection in the facility.**

- **Roommates of symptomatic residents should not be moved to new shared rooms, but be placed in a single room for isolation and monitoring for signs and symptoms.**
  - Staff who have signs or symptoms of COVID-19, who have had recent unprotected exposure to a person suspected or confirmed to have COVID-19, or who have been directed to self-isolate according to local public health directives, do not return to the CC home until cleared to do so by Public Health or facility IPC policies. CCF operators should work with Chief Public Health office to manage exposed staff.
- Waste and soiled linen are managed and/or adequately cleaned and disinfected according to CCF policies and procedures.
- **Staff uniforms are promptly removed and laundered after their work shift.**
- The care environment is cleaned using an enhanced cleaning protocol with an emphasis on frequently touched surfaces.

**CCF Staff must ensure:**

- **All staff returning from out of province travel will be required to self-isolate according to current Public Health direction.**
- Staff working in Community Care and LTC will be tested weekly for COVID-19. Testing can be done at the LTC facility or through the health care worker line 1-855-354-4358 or by accessing a [drop in testing site](#). Facilities are responsible for ensuring staff are tested.
- Adherence to CCF IPC policies and procedures and public health guidance.
  - Self-monitoring for symptoms of COVID-19 is done twice daily and immediately report any new symptoms to the CC facility and arrange for testing. If symptoms occur at work immediately perform hand hygiene, **do not** remove mask, inform the supervisor, avoid further resident contact, leave as soon as it is safe to do so and arrange testing.
- If staff have a potential exposure to a case of COVID-19 they must report to CCF management to determine whether work restrictions are necessary.
- Staff are knowledgeable about:
  - Routine practices to be followed for all resident interactions, e.g. hand hygiene, point of care risk assessment.
  - How to conduct a point-of-care risk assessment (**Appendix C**) prior to interactions to determine what IPC measures are needed to protect residents and themselves from infection.
  - The proper use of available PPE.
  - Procedure to safely don and doff PPE. (**Appendix D**)

## ***Screening***

Access to the CCF facility should be minimized and carefully monitored.

- Visitor restrictions will be reassessed throughout the course of the pandemic and adjusted according to the epidemiology of COVID 19 in the community.
- Essential services visitors to the facility should be those who are necessary to maintain functioning of the facility e.g. food delivery, supplies, funeral director etc.
- Family and visitors will be admitted for compassionate reasons (e.g. end of life).
- Anyone entering the facility should be screened for COVID-19 symptoms prior to entering, and must not enter if displaying symptoms.
- All staff and visitors are required to put on a non-medical mask at entry to the CCF facility and perform hand hygiene to reduce the risk of transmitting COVID-19 infection from staff or visitors to residents, which may occur even when symptoms of illness are not recognized.
- Physical distancing of 6ft/2 meters should be maintained between visitors and other residents.
- **Movement should be limited within the facility to directly visiting the resident and exit the CCF after their visit.**
- If the visitor is unable to adhere to appropriate precautions, the visitor will be excluded from visiting.
- Food and essential items should be delivered through a single access point. Every effort should be made to avoid unnecessary entry into CCFs, and if entry is required, delivery personnel should be screened as per other visitors.
- Masks, tissues, ABHR and a no-touch waste receptacle are available for staff, residents, and visitors' use at the screening point at each entrance.

## **Resident and Staff Screening and Management**

CCF must ensure that there are processes in place to conduct active screening of staff and residents for signs and symptoms of COVID-19.

### **Staff**

- Staff screening must include a self-assessment for exposures and symptoms of COVID-19, including a temperature check. Staff self-assessment should occur twice daily. Temperature should be checked at the beginning of each shift.
- Staff should be restricted in work assignments to specific units/cohorts wherever feasible, to limit the spread within facilities.
- If a staff member develops symptoms of COVID-19 at work they should immediately perform hand hygiene, ensure that they do not remove their mask, inform their supervisor, avoid further resident contact, leave as soon as it is safe to do so and arrange testing.
- Symptomatic staff will be required to self-isolate until they are tested and the results are confirmed.
  - If the test results are negative for COVID-19 but the employee remains ill/symptomatic, they should not return to work until well.

- If the test results are negative for COVID-19 and the employee is no longer ill/symptomatic, the employee can return to work.
- If the test results are positive for COVID-19 the employee follows the direction of Public Health and remains self-isolated as per the direction of the CPHO.

## Residents

- Test residents
  - Prior to admission to the facility (within 48 hours) regardless of symptoms.
  - Follow up testing schedule as outlined in the current Testing Memo.
- Resident screening must include a minimum of twice daily assessment for signs and symptoms of COVID-19. Symptoms in elderly residents may be subtle or atypical, and staff who are screening residents should be sensitive to detection of changes from resident baseline physical and cognitive status.
- **Considerations for older adults include:**
  - **Fever may be defined as temperature 37.8 °C or greater; repeated temperatures > 37.2 °C or an increase in temperature of > 1.1 °C , over baseline may represent fever in older adults, and fever may be absent.**
  - **New and unexplained symptoms may include but not limited to chest pain, dizziness, loss of appetite, lethargy, or changes in cognition.**
  - **Older adults may be more likely to present with atypical signs and symptoms (e.g., increased frequency of falls, delirium).**
  - **Individuals with cognitive impairment who may not be able to describe COVID-19 symptoms may present with refusal of food and drink or an abrupt change in mental status, functional status, or behavior.**
- A resident who displays signs or symptoms of COVID-19 should immediately be placed on droplet/contact precautions and tested.
- If the resident was tested due to being symptomatic for COVID 19 and remains symptomatic after an initial negative result, retesting may be done 4 to 7 days after the initial test. The resident will remain on precautions as appropriate until no longer symptomatic.
- Staff should initiate and maintain a line listing of residents (**Appendix E**) with suspected or confirmed COVID-19.

## ***Outbreak Management***

***In the context of the COVID-19 pandemic, a single laboratory-confirmed case of COVID-19 in a resident or staff member in a CCF defines an outbreak.***

### **Outbreak Protocol for COVID-19 Community Care**

Every precaution should be taken to prevent the introduction of illness into CC facilities.

Two main priorities will determine the size and duration of the outbreak, early detection (testing) and implementation of control measures.

### **Testing Guidelines**

Testing for COVID-19 during an outbreak should be conducted for the following people:

- **Symptomatic** and **asymptomatic** residents with close contact to the affected resident or HCW (e.g. residents on the affected unit).
  - **Those who share a room with a resident who is suspected or confirmed to have COVID-19 should not be moved into a room with another individual.**
- **Symptomatic** and **asymptomatic** staff in close contact with a positive case in the 48 hours prior to symptom onset (e.g. staff on the affected unit).
- One compatible symptom of COVID-19 in residents and health care providers should lead to testing.
- Once an outbreak is established, any residents with symptoms should be managed as suspect cases.
- With guidance from the Chief Public Health Office, staff who are self-isolating due to being a contact of a case and are asymptomatic may return to work in some cases due to staff shortages during an outbreak.

### **Aerosol-generating medical procedures (AGMPs)<sup>3</sup>**

An AGMP is any procedure conducted on a resident that can induce production of aerosols of various sizes, including droplet nuclei.

Consider discontinuing CPAP/BiPAP during an outbreak in consultation with the physician/NP.

AGMPs on a resident suspected or confirmed to have COVID-19 should be avoided if possible and only be performed if:

- The AGMP is medically necessary and performed by the most experienced person
- The minimum number of persons required to safely perform the procedure are present
- All persons in the room are wearing a fit-tested and fit-checked (**Appendix B**), N95 respirator, gloves, gown and face or eye protection
- The door of the room is closed

---

<sup>3</sup> Aerosol-generating medical procedure includes: cardio-pulmonary resuscitation, sputum induction, nebulization, non-invasive positive pressure ventilation (CPAP, BiPAP), or open suctioning.

## Specimen Collection

Nasopharyngeal (NP) or nasal and throat swabs will be collected by qualified staff who are knowledgeable about proper collection methods. CCF will be supported with staff trained in specimen collection if large scale testing is required.

## *Implementation of Control Measures*

Immediately report and discuss the suspected outbreak with the Chief Public Health Officer (CPHO) or designate.

During an Outbreak all outbreak control measures take priority over routine operations until the outbreak is declared over.

## Infection Prevention and Control

### Facility

- Post outbreak notification sign(s) at facility entrance and/or floor/unit/household advising about the outbreak.
- Maintain an outbreak line list (**Appendix E**) of cases in residents and a line list of cases in staff (care providers, food handlers, housekeeping, etc.) and forward to the CPHO daily.
- Close the facility to new admissions, readmissions, or transfers unless medically necessary.

## Outbreak Environmental Cleaning and Disinfection

Cleaning and disinfection of high-touch surfaces is important for controlling the spread of microorganisms.

- Environmental disinfectants should be classed as a hospital grade disinfectant **registered in Canada with a Drug Identification Number (DIN), and labelled as effective for both enveloped and non-enveloped viruses.**
- In the event that commercially-prepared hospital disinfectants are not available, diluted bleach solution may be used to disinfect the environment.
  - **The minimum concentration of chlorine should be 1000 ppm or 0.1% (equivalent to a 1:50 dilution of 5% concentrated liquid bleach). When using bleach, cleaning must precede disinfection.**
- All surfaces, that are considered “**frequently touched**” (e.g. telephone, bedside table, overbed table, chair arms, call bell cords or buttons, door handles, light switches, bedrails, handwashing sink, bathroom sink, toilet and toilet handles shower handles, faucets or shower chairs, grab bars, outside of paper towel dispenser, dining tables, etc.) should be cleaned and disinfected at a **minimum of twice daily and when soiled.**
- Resident care equipment (e.g., BP cuffs, electronic thermometers, oximeters, stethoscope) should be cleaned and disinfected after each use and between residents with hospital –grade disinfectant following the recommended contact time.

- **Room cleaning and disinfection** should be performed at least **once per day on all low touch surfaces** (e.g., shelves, bedside chairs, windowsills, overbed light fixtures, etc.). Floors and walls should be kept visibly clean and free of spills, dust and debris.
- All surfaces or items, **outside of the resident room, that are touched by or in contact with staff** (e.g., computer carts and/or screens, medication carts, charting desks or tables, computer screens, telephones, touch screens, chair arms) should be cleaned and disinfected **at least daily and when soiled**. Staff should ensure that hands are cleaned before touching shared equipment.
- **Environmental services staff should wear the same PPE as other staff when cleaning and disinfecting a resident's room if contact/droplet precautions are in place.**
- **Facility protocol for cleaning of the resident's room after discharge, transfer, or discontinuation of Droplet and Contact Precautions should be followed. Toilet brushes, unused toilet paper and other disposable supplies should be discarded, and all bedside privacy curtains removed and laundered at the time of resident discharge or transfer.**

### **Resident Care Equipment**

- All reusable equipment and supplies, electronics, personal belongings, etc., should be dedicated to the use of the resident with suspect or confirmed COVID-19 infection. If use with other residents is necessary, the equipment and supplies should be cleaned and disinfected with a hospital -grade disinfectant, ensuring adequate contact time before reuse. Items that cannot be appropriately cleaned and disinfected should be discarded.

### **Linen, Dishes and Cutlery**

- No special precautions are recommended; routine practices are used.

### **Waste Management**

- No special precautions are recommended; routine practices are used.

### **Resident transfers**

- **Once an outbreak has been declared, transfer within and between facilities should be avoided unless medically indicated.**
- If an admission or transfer is deemed medically necessary, discuss with Infection Prevention and Control (IPC) or the CPHO for guidance.
- Notify the receiving hospital or clinic to ensure that care can be provided safely.
- Residents should be provided with clean attire, be accompanied by staff, wear a mask, be instructed to perform hand hygiene (with assistance as necessary), and avoid touching surfaces or items outside of the room.
- Wheelchairs or transport stretchers should be cleaned and disinfected prior to exiting the resident's room and after being used. Any surfaces outside the residents room that the resident may have touched should be cleaned and disinfected
- Droplet and contact precautions should be maintained by staff during resident transport, and the need for droplet and contact precautions should be communicated to the transferring service and receiving unit ahead of transfer.

- If a resident is transferred to an acute care facility for treatment of COVID-19 or its complications, they may return to the outbreak facility when they are medically stable.
- Residents transferred to an acute care facility who do not have COVID-19 should not be re-admitted back to a COVID affected part of the facility.
- Notify any facility that you transferred a resident to within the past 14 days, that your facility has a COVID-19 outbreak.

### **Staff allocation**

- **Staff should be dedicated to working in one CCF.**
- Cohort staff when possible e.g. staff working with symptomatic residents should avoid working with residents who are well.
- If dedicated staff for ill residents is not available, staff should first work with the well residents, then move on to care for ill residents. Movement between floors and units should be avoided where possible.
- Staff working in a facility experiencing an outbreak may only work in facilities or units that have COVID infected residents/patients.
- Staff who have recovered from COVID-19 may work and should be prioritized to work in facilities experiencing an outbreak or COVID 19 units.

### ***Declaring the Outbreak Over***

The outbreak may be considered over when **no new cases in residents or staff are identified for at least 28 days in consultation with the CPHO.**

Control measures will be continued until the outbreak is declared over.

### ***Discontinuing Additional Precautions***

The duration and discontinuation of contact and droplet precautions for an individual resident or unit/household on outbreak should be determined on a case-by-case basis, in consultation with CPHO and infection prevention and control experts (if available).

### ***Handling of Deceased Bodies***

Routine practices should be used properly and consistently when handling deceased bodies or preparing bodies for autopsy or transfer to mortuary services.

## ***Bibliography***

BC Centre for Disease Control. [Infection Prevention and Control for Novel Coronavirus \(COVID-19\): Interim guidance for Long-term Care and Assisted Living Facilities \(2020\)](http://www.bccdc.ca/Health-Info-Site/Documents/COVID19_LongTermCareAssistedLiving.pdf). [http://www.bccdc.ca/Health-Info-Site/Documents/COVID19\\_LongTermCareAssistedLiving.pdf](http://www.bccdc.ca/Health-Info-Site/Documents/COVID19_LongTermCareAssistedLiving.pdf)

Centers for Disease Control and Prevention. [Interim Additional Guidance for Infection Prevention and Control for Patients with Suspected or Confirmed COVID-19 in Nursing Homes \(March 2020\)](https://www.cdc.gov/coronavirus/2019-ncov/healthcare-facilities/prevent-spread-in-long-term-care-facilities.html). <https://www.cdc.gov/coronavirus/2019-ncov/healthcare-facilities/prevent-spread-in-long-term-care-facilities.html>

Centers for Disease Control and Prevention. [Interim Infection Prevention and Control Recommendations for Patients with Suspected or Confirmed Coronavirus Disease 2019 \(COVID-19\) in Healthcare Settings \(2020\)](https://www.cdc.gov/coronavirus/2019-ncov/infection-control/control-recommendations.html). <https://www.cdc.gov/coronavirus/2019-ncov/infection-control/control-recommendations.html>

Centers for Disease Control and Prevention. [Coronavirus Disease \(COVID-19\) Preparedness Checklist for Nursing Homes and other Long-Term Care Settings \(2020\)](#). CDC novel-coronavirus-2019-Nursing-Homes-Preparedness-Checklist\_3\_13

Institut national de sante publique. [COVID-19: Mesures de prevention et de controle de infections pour les milieu de soins aigus: recommandations interimaaires \(March 27 2020\)](https://www.inspq.qc.ca/publications/2906-pci-soins-aigus-covid19). <https://www.inspq.qc.ca/publications/2906-pci-soins-aigus-covid19>

Institut national de sante publique. COVID-19: [Mesures exceptionnelles pour les equipements de protection individuelle lors de pandémie \(April 1 2020\)](https://www.inspq.qc.ca/publications/2957-mesures-exceptionnelles-protection-individuelle-covid19). <https://www.inspq.qc.ca/publications/2957-mesures-exceptionnelles-protection-individuelle-covid19>

Ministry of Health and Long Term Care, Ontario. [Control of Respiratory Infection Outbreaks in Long-Term Care Homes \(2018\)](http://www.health.gov.on.ca/en/pro/programs/publichealth/oph_standards/docs/reference/RESP_Infectn_ctrl_guide_LTC_2018_en.pdf). [http://www.health.gov.on.ca/en/pro/programs/publichealth/oph\\_standards/docs/reference/RESP\\_Infectn\\_ctrl\\_guide\\_LTC\\_2018\\_en.pdf](http://www.health.gov.on.ca/en/pro/programs/publichealth/oph_standards/docs/reference/RESP_Infectn_ctrl_guide_LTC_2018_en.pdf)

Ministry of Health, Ontario. [COVID-19 Outbreak Guidance for Long-Term Care Homes \(LTCH\) \(2020\)](http://www.health.gov.on.ca/en/pro/programs/publichealth/coronavirus/docs/2019_long_term_care_guidance.pdf). [http://www.health.gov.on.ca/en/pro/programs/publichealth/coronavirus/docs/2019\\_long\\_term\\_care\\_guidance.pdf](http://www.health.gov.on.ca/en/pro/programs/publichealth/coronavirus/docs/2019_long_term_care_guidance.pdf)

Nova Scotia Health Authority. [Coronavirus Disease 2019 \(COVID-19\): Infection Prevention and Control Guidelines for Long-Term Care Settings \(2020\)](#). NSHA - covid-19-ipac-guide-ltc-march-15-2020

Public Health Agency of Canada. [Hand Hygiene Practices in Healthcare Settings](https://www.canada.ca/en/public-health/services/infectious-diseases/nosocomial-occupational-infections/hand-hygiene-practices-healthcare-settings.html) (2012). <https://www.canada.ca/en/public-health/services/infectious-diseases/nosocomial-occupational-infections/hand-hygiene-practices-healthcare-settings.html>

Public Health Agency of Canada. [Infection Prevention and Control Guidance for Middle East Respiratory Syndrome Coronavirus \(MERS-CoV\) in Acute Care Settings](https://www.canada.ca/en/public-health/services/publications/diseases-conditions/infection-prevention-control-guidance-middle-east-respiratory-syndrome-coronavirus-mers-cov-acute-care-settings.html) (2018). <https://www.canada.ca/en/public-health/services/publications/diseases-conditions/infection-prevention-control-guidance-middle-east-respiratory-syndrome-coronavirus-mers-cov-acute-care-settings.html>

Public Health Agency of Canada. [Routine Practices and Additional Precautions for Preventing the Transmission of Infection in Healthcare Settings](https://www.canada.ca/en/public-health/services/infectious-diseases/nosocomial-occupational-infections/routine-practices-additional-precautions-preventing-transmission-infection-healthcare-settings.html) (2013). <https://www.canada.ca/en/public-health/services/infectious-diseases/nosocomial-occupational-infections/routine-practices-additional-precautions-preventing-transmission-infection-healthcare-settings.html>

Public Health Ontario. [Updated IPAC Recommendations for Use of Personal Protective Equipment for Care of Individuals with Suspect or Confirmed COVID-19 \(2020\)](https://www.publichealthontario.ca/-/media/documents/ncov/updated-ipac-measures-covid-19.pdf?la=en). <https://www.publichealthontario.ca/-/media/documents/ncov/updated-ipac-measures-covid-19.pdf?la=en>

World Health Organization. [Infection prevention and control during health care when novel coronavirus \(nCoV\) infection is suspected, Interim guidance](https://www.who.int/publications-detail/infection-prevention-and-control-during-health-care-when-novel-coronavirus-(ncov)-infection-is-suspected) (March 19 2020). [https://www.who.int/publications-detail/infection-prevention-and-control-during-health-care-when-novel-coronavirus-\(ncov\)-infection-is-suspected](https://www.who.int/publications-detail/infection-prevention-and-control-during-health-care-when-novel-coronavirus-(ncov)-infection-is-suspected)

World Health Organization. [Infection Prevention and Control guidance for Long-Term Care Facilities in the context of COVID-19 \(March 21 2020\)](#). WHO-2019-nCoV-IPC long term care-2020.1-eng.pdf

World Health Organization. [Rational use of personal protective equipment for coronavirus disease \(COVID-2019\) \(27 February 2020\)](#). [https://apps.who.int/iris/bitstream/handle/10665/331215/WHO-COVID-19-IPCPPE\\_use-2020.1-eng.pdf](https://apps.who.int/iris/bitstream/handle/10665/331215/WHO-COVID-19-IPCPPE_use-2020.1-eng.pdf)



# REDUCE THE SPREAD OF COVID-19.

## WASH YOUR HANDS.



1

Wet hands with warm water



2

Apply soap



3

For at least 20 seconds, make sure to wash:



4

Rinse well



5

Dry hands well with paper towel



6

Turn off tap using paper towel



palm and back of each hand



between fingers



under nails



thumbs



1-833-784-4397



[@canada.ca/coronavirus](https://canada.ca/coronavirus)



Public Health  
Agency of Canada

Agence de la santé  
publique du Canada



# Your 4 Moments for Hand Hygiene



## ***Appendix B - How to Fit-Check a N95 Mask***

**Fit checking involves a quick check - each time the mask is put on - to ensure that the respirator is properly applied, that a good seal is achieved over the bridge of the nose and mouth and there are no gaps between the respirator and face. Fit checking is the appropriate minimum standard at the point of use for healthcare workers using N95 respirators.**

**No clinical activity should be undertaken until a satisfactory fit has been achieved.**

Instructions to fit check a N95 mask;

1. Place the respirator on your face.
2. Place the headband or ties over your head and at the base of your neck.
3. Compress the respirator to ensure a seal across your face, cheeks and the bridge of your nose.
4. Check the positive pressure seal of the respirator by gently exhaling. If air escapes, the respirator needs to be adjusted.
5. Check the negative pressure seal of the respirator by gently inhaling. If the respirator is not drawn in towards your face, or air leaks around the face seal, readjust the respirator and repeat process, or check for defects in the respirator.

## ***Appendix C - Point of Care Risk Assessment Tool for COVID-19***

Prior to any patient interaction, all health care workers (HCWs) have a responsibility to always assess the infectious risk posed to themselves and to other patients, visitors, and HCWs. This risk assessment is based on professional judgement about the clinical situation and up-to-date information on how the specific healthcare organization has designed and implemented engineering and administrative controls, along with the availability and use of Personal Protective Equipment (PPE).

Point of Care Risk Assessment (PCRA) is an activity performed by the HCW before every patient interaction, to:

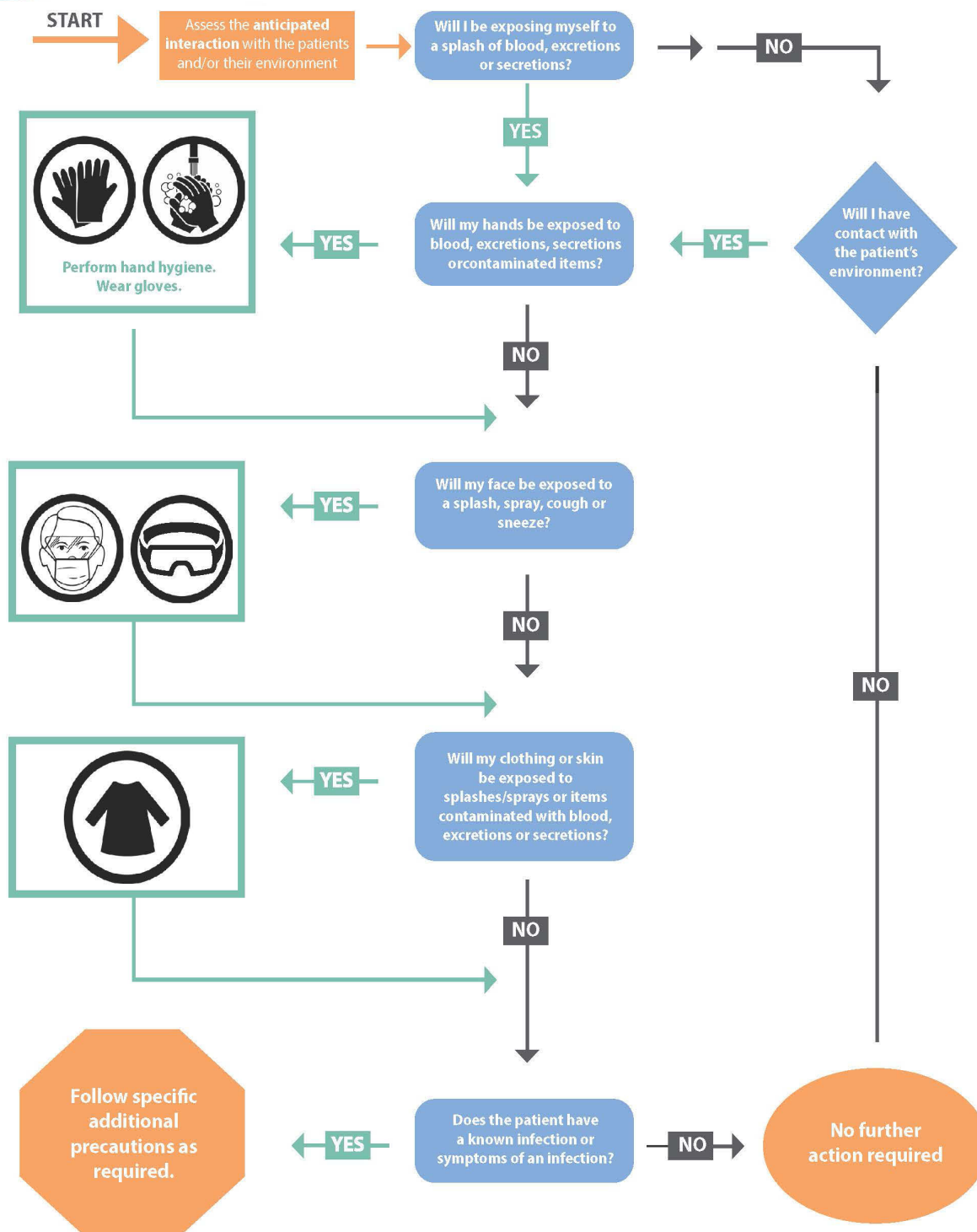
1. Evaluate the likelihood of exposure to COVID-19,
  - a. from a **specific interaction** (e.g., performing/ assisting with clinical procedures/ interaction), non-clinical interaction (i.e., admitting, teaching patient/ family), transporting patients, direct face-to-face interaction with patients, etc.)
  - b. with a **specific patient** (e.g., residents not capable of self-care/ hand hygiene, have poor-compliance with respiratory hygiene, copious respiratory secretions, frequent cough/ sneeze, early stage of illness, etc.)
  - c. **specific environment** (e.g., single rooms, shared rooms/ washrooms, hallway, assessment areas, emergency departments, public areas, therapeutic departments, diagnostic imaging departments, housekeeping, etc.)

AND

2. Choose the appropriate actions/ PPE needed to minimize the risk of patient, HCW/other staff, visitor, contractor, etc. exposure to COVID-19

PCRA is not a new concept, but one that is already performed regularly by professional HCWs many times a day for their safety and the safety of patients and others in the healthcare environment. For example, when a HCW evaluates a patient and situation to determine the possibility of blood or body fluid exposure or chooses appropriate PPE to care for a patient with an infectious disease, these actions are both activities of a PCRA.

# Routine Practices Risk Assessment + Algorithm for all Patient Interactions



Health PEI

## ***Appendix D - Donning and Doffing PPE***

### **Contact and Droplet Precautions**

Suspected or Confirmed Resident with Respiratory Illness (Influenza-like Illness, Influenza, COVID-19) follow Contact/ Droplet Precautions. This includes the appropriate selection and use all of the following personal protective equipment (PPE).

- Gloves
- Long-sleeved gown
- Facial protection, such as a surgical/procedure mask and eye protection/ face shield, or surgical/procedure mask with visor attachment

All PPE should be removed before leaving the patient's room and discarded into a no-touch receptacle.

### **Donning PPE Order**

1. Perform hand hygiene
2. Don gown
3. Apply mask
4. Apply face shield or goggles
5. Put on gloves

### **Doffing PPE Order**

1. Remove gown and gloves (can be removed together)
2. Perform hand hygiene
3. Remove face shield or goggles (do not touch the front)
4. If appropriate remove mask touching only the strings or ear loops.
5. Perform hand hygiene

## Appendix E - Line List Information on Residents and Staff with Symptoms of COVID-19

Facility \_\_\_\_\_

Date \_\_\_\_\_

RESIDENTS: Total Number of Residents: _____			Number of Residents ill: _____					
Name	Onset Date	Unit	Symptoms			MRN	Swabbed If Yes, Date	Comments
			Fever <sup>4</sup>		Sudden onset cough		Date	
			Muscle/body aches		Sore Throat			
			Headache		Other <sup>5</sup> _____			
			Fever <sup>4</sup>		Sudden onset cough		Date	
			Muscle/body aches		Sore Throat			
			Headache		Other <sup>5</sup> _____			
			Fever <sup>4</sup>		Sudden onset cough		Date	
			Muscle/body aches		Sore Throat			
			Headache		Other <sup>5</sup> _____			
			Fever <sup>4</sup>		Sudden onset cough		Date	
			Muscle/body aches		Sore Throat			
			Headache		Other <sup>5</sup> _____			
STAFF: Total Number of Staff: _____			Number of Staff ill: _____					
Name	Onset Date	Last Date of Work	Symptoms			MRN	Swabbed If yes, Date	Comments
			Fever <sup>4</sup>		Sudden onset cough		Date	
			Muscle/body aches		Sore Throat			
			Headache		Other <sup>5</sup> _____			
			Fever <sup>4</sup>		Sudden onset cough		Date	
			Muscle/body aches		Sore Throat			
			Headache		Other <sup>5</sup> _____			
			Fever <sup>4</sup>		Sudden onset cough		Date	
			Muscle/body aches		Sore Throat			
			Headache		Other <sup>5</sup> _____			
			Fever		Sudden onset cough		Date	
			Muscle/body aches		Sore Throat			
			Headache		Other			

<sup>4</sup> Fever Single temp >37.8°C

<sup>5</sup> Any new or worsening respiratory symptoms (cough, shortness of breath, runny nose or sneezing, nasal congestion, hoarse voice, sore throat or difficulty swallowing), OR  
Any new onset non-respiratory symptoms including chills, muscle aches, diarrhea, malaise, headache, sudden loss of taste or smell or other unexplained symptoms or change in clinical status.

