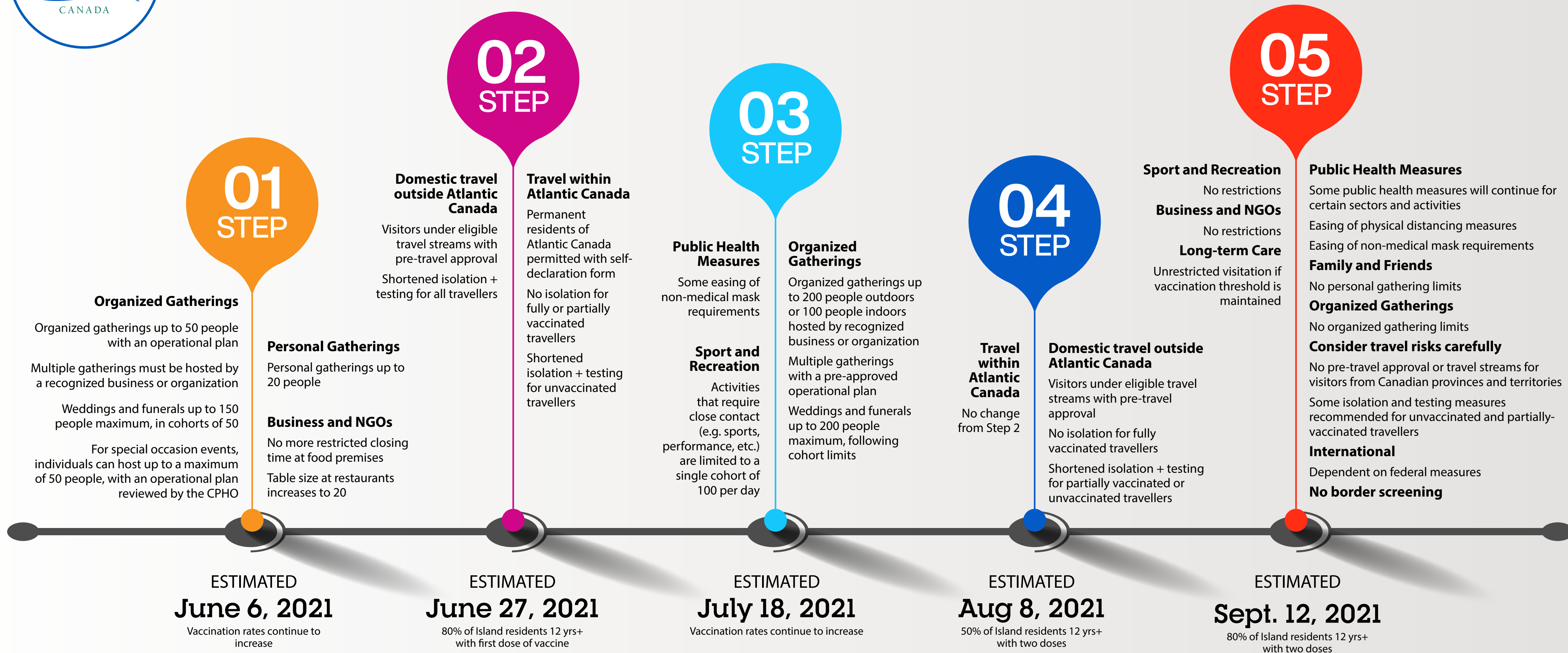




COVID-19 in PEI: Moving Forward

PEI's balanced and measured approach to relaxing COVID-19 public health measures



Public health measures will continue throughout the summer, including physical distancing, records for contact tracing, access to testing and case management

Final decisions regarding the re-opening to travel and easing public health measures will be based on achieving PEI vaccine targets, a low level of disease and controlled transmission