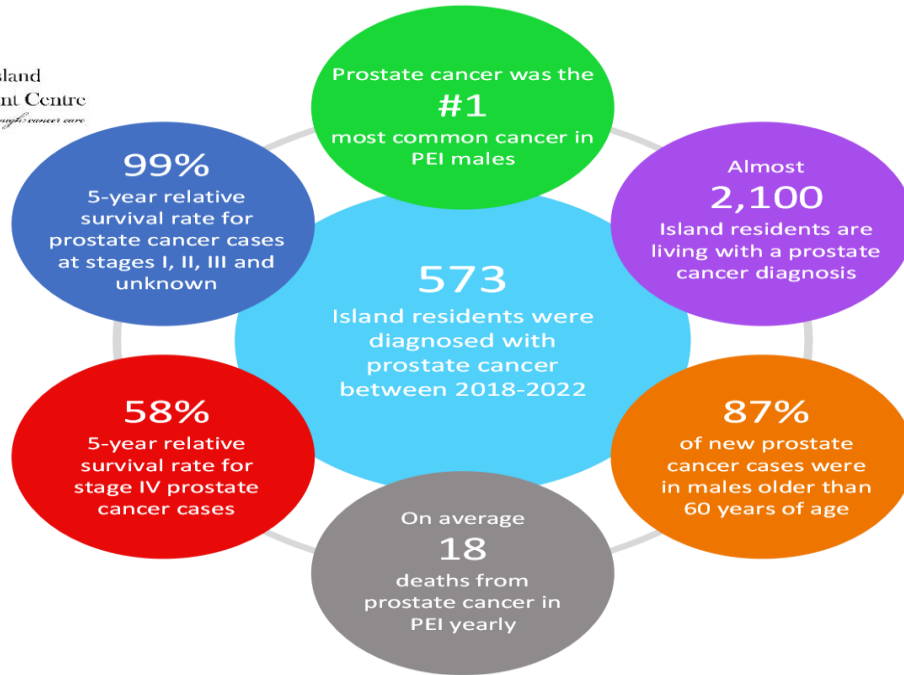


# Prostate Cancer Trends in Prince Edward Island

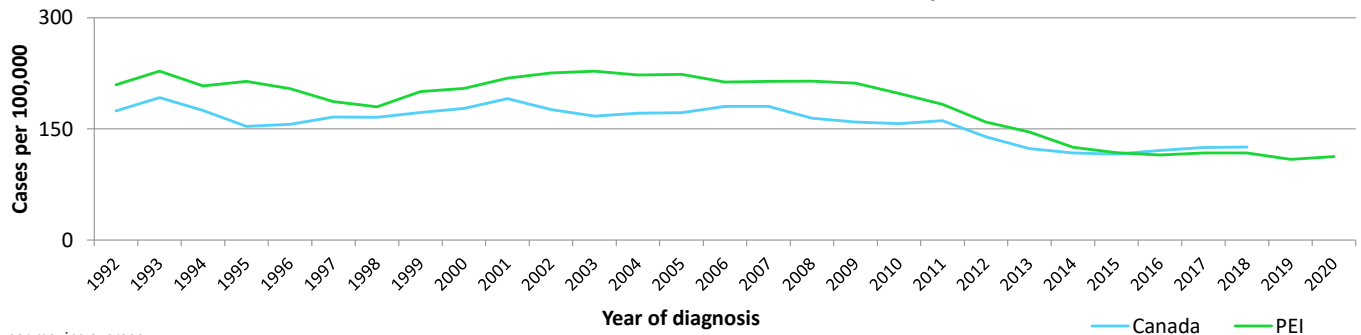
Data from PEI Cancer Registry for January 1, 2018 to December 31, 2022



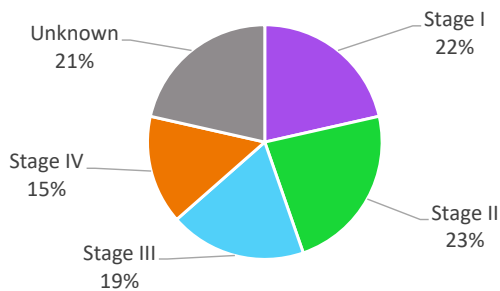
**Health PEI**  
One Island Health System



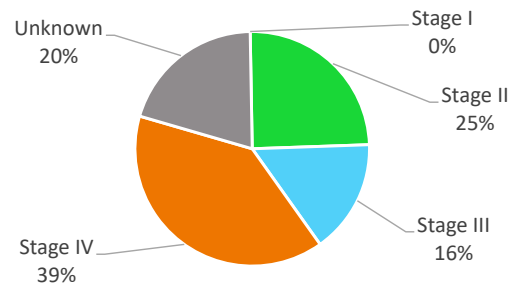
Rate of New Prostate Cancer Cases in Males Over Time, PEI\* and Canada



New Prostate Cancer Cases by Stage



Prostate Cancer Deaths by Stage



## Key Points and Recommendations

- ✓ Although rates of prostate cancer in PEI are high, prognosis is excellent
- ✓ Help lower your risk for prostate cancer by staying at a healthy weight, being active and not smoking
- ✓ Consult with your health care provider if you have any of the following or are worried about your health: problems urinating (including slow or weak urine stream), urinating often, pain on urination, pain on ejaculation, or blood in your urine or semen
- ✓ A decision of whether or not to undergo prostate cancer screening [e.g., prostate-specific antigen (PSA) test] should be based on shared decision-making with your health care provider, after thorough discussion on potential benefits and harms